

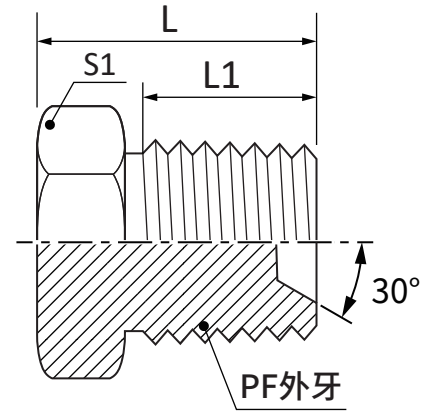
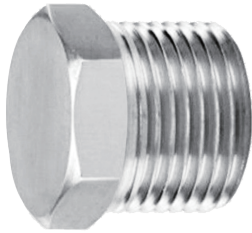
PLU

接頭規格：外牙塞頭凹30°

螺紋規格：BSPF

接頭材質：電鍍鋅、不銹鋼

※各式規格，歡迎洽詢



尚府料號	規格	THREAD 1	THREAD 2	尺寸mm						
	PF	PF(BSPP/G)	-	L	L1	L2	S1	S2	D1	D2
PLU04	1/4	1/4-19	-	19	13	-	14	-	-	-
PLU06	3/8	3/8-19	-	22	15	-	17	-	-	-
PLU08	1/2	1/2-14	-	23	17	-	21	-	-	-
PLU12	3/4	3/4-14	-	27	19	-	27	-	-	-
PLU16	1	1-11	-	30	21	-	33	-	-	-
PLU20	1 1/4	1 1/4-11	-	36	24	-	41	-	-	-
PLU24	1 1/2	1 1/2-11	-	36	25	-	50	-	-	-
PLU32	2	2-11	-	43	30	-	60	-	-	-