

# TE - T - EINSCHRAUB - VERSCHRAUBUNGEN

TE - MALE - STUD - BRANCH - TEE - COUPLINGS

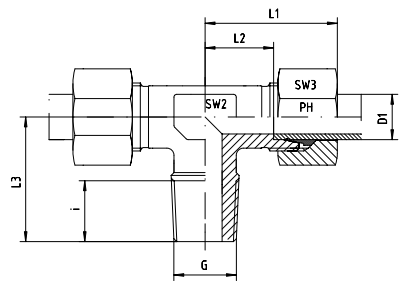


T-Einschraubverschraubungen  
LL-, L- und S-Reihe  
Einschraubgewinde:  
Whitworth-Rohrgewinde - Kegelig

\*\* Die angegebenen Druckstufen sind nur gültig,  
wenn die Einschraublöcher mit kegeligem Gewinde  
vorhanden sind.

Stud Branch Tees  
LL-, L- and S-Series  
Thread: BSP - Taper

\*\* The pressure rates are only valid, if the female parts  
are with tapered threads, too.



## Reihe / Series LL

Druck Pressure	Rohr A.D. Tube O.D.	Gewinde Thread	Ca. Maße Approx. Dimensions					Bestellzeichen Order-Code		Brutto-Preis Gross-Price
PN	D1	G	L1	L2	L3	i	SW2	SW3		Euro (€)
100	4	R 1/8" keg	21,0	11,0	17,0	8,0	9	10	TE-LL-04-R 1/8"-k	
100	6	R 1/8" keg	21,0	9,5	17,0	8,0	9	12	TE-LL-06-R 1/8"-k	
100	8	R 1/8" keg	23,0	11,5	20,0	8,0	12	14	TE-LL-08-R 1/8"-k	

## Reihe / Series L

Druck Pressure	Rohr A.D. Tube O.D.	Gewinde Thread	Ca. Maße Approx. Dimensions					Bestellzeichen Order-Code		Brutto-Preis Gross-Price
PN	D1	G	L1	L2	L3	i	SW2	SW3		Euro (€)
315	6	R 1/8" keg	27,0	12,0	20,0	8,0	12	14	TE-L-06-R 1/8"-k	
315	6	R 1/4" keg	29,0	14,0	26,0	12,0	12	14	TE-L-06-R 1/4"-k	
315	8	R 1/8" keg	29,0	14,0	26,0	12,0	12	17	TE-L-08-R 1/8"-k	
315	8	R 1/4" keg	29,0	14,0	26,0	12,0	12	17	TE-L-08-R 1/4"-k	
315	8	R 3/8" keg	30,0	15,0	28,0	12,0	14	17	TE-L-08-R 3/8"-k	
315	10	R 1/8" keg	30,0	15,0	27,0	8,0	14	19	TE-L-10-R 1/8"-k	
315	10	R 1/4" keg	30,0	15,0	27,0	12,0	14	19	TE-L-10-R 1/4"-k	
315	10	R 3/8" keg	30,0	15,0	27,0	12,0	14	19	TE-L-10-R 3/8"-k	
315	10	R 1/2" keg	37,0	21,0	33,0	14,0	17	19	TE-L-10-R 1/2"-k	
315	12	R 1/4" keg	32,0	17,0	28,0	12,0	17	22	TE-L-12-R 1/4"-k	
315	12	R 3/8" keg	32,0	17,0	28,0	12,0	17	22	TE-L-12-R 3/8"-k	
315	12	R 1/2" keg	38,0	20,5	32,5	14,0	17	22	TE-L-12-R 1/2"-k	
315	15	R 3/8" keg	36,0	21,0	32,0	12,0	19	27	TE-L-15-R 3/8"-k	
315	15	R 1/2" keg	36,0	21,0	34,0	14,0	19	27	TE-L-15-R 1/2"-k	
315	18	R 1/2" keg	40,0	23,5	36,0	14,0	24	32	TE-L-18-R 1/2"-k	

## Reihe / Series S

Druck Pressure	Rohr A.D. Tube O.D.	Gewinde Thread	Ca. Maße Approx. Dimensions					Bestellzeichen Order-Code		Brutto-Preis Gross-Price
PN	D1	G	L1	L2	L3	i	SW2	SW3		Euro (€)
630 **	6	R 1/4" keg	31,0	16,0	26,0	12,0	12	17	TE-S-06-R 1/4"-k	
630 **	8	R 1/4" keg	32,0	17,0	27,0	12,0	14	19	TE-S-08-R 1/4"-k	
630 **	10	R 3/8" keg	34,0	17,5	28,0	12,0	17	22	TE-S-10-R 3/8"-k	
630 **	12	R 3/8" keg	38,0	21,5	28,0	12,0	17	24	TE-S-12-R 3/8"-k	
630 **	12	R 1/2" keg	38,0	21,5	32,5	14,0	17	24	TE-S-12-R 1/2"-k	
630 **	14	R 1/2" keg	40,0	22,0	32,0	14,0	19	27	TE-S-14-R 1/2"-k	
400 **	16	R 1/2" keg	43,0	24,5	32,0	14,0	24	30	TE-S-16-R 1/2"-k	