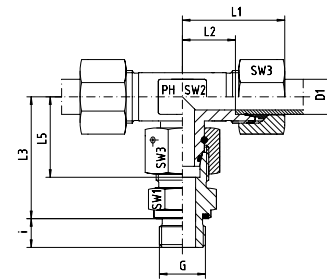


# ET - EINSTELLBARE - T- VERSCHRAUBUNGEN

ET - ADJUSTABLE - BRANCH - TEES

Einstellbare T-Verschraubungen mit Dichtkegel und O-Ring FPM  
Rohrseitig Schneidringanschluss  
Einschraubgewinde:  
Whitworth-Rohrgewinde - Zylindrisch  
wd = Abdichtung durch Profildichtung - FPM

With Taper and O-ring - FPM  
Cutting Ring Connection at the Tube Connection side  
Thread: BSP - Parallel  
wd = Sealing by an Elastomer Profiled Ring - FPM



## Reihe / Series L

Druck Pressure	Rohr A.D. Tube O.D.	Gewinde Thread	Ca. Maße Approx. Dimensions								Bestellzeichen Order-Code
PN	D1	G	L1	L2	L3	L5	i	SW1	SW2	SW3	
500	6	G 1/8"	27,0	12,0	34,5	26,0	8,0	14	12	14	ET-DKOL-06-G 1/8"-wd
500	8	G 1/4"	29,0	14,0	37,5	27,5	12,0	17	12	17	ET-DKOL-08-G 1/4"-wd
500	10	G 1/4"	30,0	15,0	40,0	29,0	12,0	19	14	19	ET-DKOL-10-G 1/4"-wd
400	12	G 3/8"	32,0	17,0	42,0	29,5	12,0	22	17	22	ET-DKOL-12-G 3/8"-wd
400	15	G 1/2"	36,0	21,0	46,5	32,5	14,0	27	19	27	ET-DKOL-15-G 1/2"-wd
400	18	G 1/2"	40,0	23,5	50,0	35,5	14,0	27	24	32	ET-DKOL-18-G 1/2"-wd
250	22	G 3/4"	44,0	27,5	65,0	38,5	16,0	32	27	36	ET-DKOL-22-G 3/4"-wd
250	28	G 1"	47,0	30,5	59,0	41,5	18,0	41	36	41	ET-DKOL-28-G 1"-wd
250	35	G 1 1/4"	56,0	34,5	68,5	51,0	20,0	50	41	50	ET-DKOL-35-G 1 1/4"-wd
250	42	G 1 1/2"	63,0	40,0	75,0	56,0	22,0	55	50	60	ET-DKOL-42-G 1 1/2"-wd

## Reihe / Series S

Druck Pressure	Rohr A.D. Tube O.D.	Gewinde Thread	Ca. Maße Approx. Dimensions								Bestellzeichen Order-Code
PN	D1	G	L1	L2	L3	L5	i	SW1	SW2	SW3	
800	6	G 1/4"	31,0	16,0	40,0	27,0	12,0	19	12	17	ET-DKOS-06-G 1/4"-wd
800	8	G 1/4"	32,0	17,0	42,5	27,5	12,0	19	14	19	ET-DKOS-08-G 1/4"-wd
800	10	G 3/8"	34,0	17,5	45,0	30,0	12,0	22	17	22	ET-DKOS-10-G 3/8"-wd
630	12	G 3/8"	38,0	21,5	48,0	31,0	12,0	22	17	24	ET-DKOS-12-G 3/8"-wd
630	14	G 1/2"	40,0	22,0	54,0	35,0	14,0	27	19	27	ET-DKOS-14-G 1/2"-wd
630	16	G 1/2"	43,0	24,5	55,0	36,5	14,0	27	24	30	ET-DKOS-16-G 1/2"-wd
420	20	G 3/4"	48,0	26,5	65,0	44,5	16,0	32	27	36	ET-DKOS-20-G 3/4"-wd
420	25	G 1"	54,0	30,0	73,0	50,0	18,0	41	36	46	ET-DKOS-25-G 1"-wd
420	30	G 1 1/4"	62,0	35,5	78,5	55,0	20,0	50	41	50	ET-DKOS-30-G 1 1/4"-wd
420	38	G 1 1/2"	72,0	41,0	89,0	63,0	22,0	55	50	60	ET-DKOS-38-G 1 1/2"-wd