

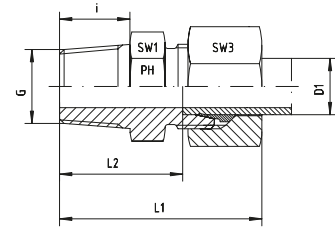
GE - GERADE - EINSCHRAUB - VERSCHRAUBUNGEN

GE - MALE - STUD - COUPLINGS



Gerade Einschraubverschraubungen
LL- und L-Reihe
Einschraubgewinde:
Whitworth-Rohrgewinde - Kegelig
Andere Sprunggrößen auf Anfrage!

Male Stud Couplings
LL- and L-Series
Thread: BSP - Taper
Other jump sizes on request!



Reihe / Series LL

Druck Pressure	Rohr A.D. Tube O.D.	Gewinde Thread	Ca. Maße Approx. Dimensions					Bestellzeichen Order-Code	Brutto-Preis Gross-Price
PN	D1	G	L1	L2	i	SW1	SW3		Euro (€)
100	4	R 1/8" keg	26,0	16,0	8,0	11	10	GE-LL-04-R 1/8"-k	
100	6	R 1/8" keg	26,0	14,5	8,0	11	12	GE-LL-06-R 1/8"-k	
100	6	R 1/4" keg	31,0	18,5	12,0	14	12	GE-LL-06-R 1/4"-k	
100	8	R 1/8" keg	28,0	16,5	8,0	12	14	GE-LL-08-R 1/8"-k	
100	8	R 1/4" keg	32,0	20,5	12,0	14	12	GE-LL-08-R 1/4"-k	

Reihe / Series L

Druck Pressure	Rohr A.D. Tube O.D.	Gewinde Thread	Ca. Maße Approx. Dimensions					Bestellzeichen Order-Code	Brutto-Preis Gross-Price
PN	D1	G	L1	L2	i	SW1	SW3		Euro (€)
315	6	R 1/8" keg	30,0	15,0	8,0	12	14	GE-L-06-R 1/8"-k	
315	6	R 1/4" keg	35,0	20,0	12,0	17	14	GE-L-06-R 1/4"-k	
315	6	R 3/8" keg	36,0	21,0	12,0	17	14	GE-L-06-R 3/8"-k	
315	6	R 1/2" keg	40,0	23,0	14,0	22	14	GE-L-06-R 1/2"-k	
315	8	R 1/8" keg	31,0	16,0	8,0	14	17	GE-L-08-R 1/8"-k	
315	8	R 1/4" keg	35,0	20,0	12,0	17	17	GE-L-08-R 1/4"-k	
315	8	R 3/8" keg	35,0	20,0	12,0	17	17	GE-L-08-R 3/8"-k	
315	8	R 1/2" keg	38,0	22,0	14,0	22	17	GE-L-08-R 1/2"-k	
315	10	R 1/8" keg	32,0	17,0	8,0	17	19	GE-L-10-R 1/8"-k	
315	10	R 1/4" keg	36,0	21,0	12,0	17	19	GE-L-10-R 1/4"-k	
315	10	R 3/8" keg	36,0	21,0	12,0	17	19	GE-L-10-R 3/8"-k	
315	10	R 1/2" keg	39,0	24,0	14,0	22	19	GE-L-10-R 1/2"-k	
315	12	R 1/8" keg	36,0	18,0	8,0	19	22	GE-L-12-R 1/8"-k	
315	12	R 1/4" keg	37,0	22,0	12,0	19	22	GE-L-12-R 1/4"-k	
315	12	R 3/8" keg	37,0	22,0	12,0	19	22	GE-L-12-R 3/8"-k	
315	12	R 1/2" keg	39,0	24,0	14,0	22	22	GE-L-12-R 1/2"-k	
160	12	R 3/4" keg	43,0	27,0	16,0	27	22	GE-L-12-R 3/4"-k	
315	15	R 1/4" keg	42,0	26,0	12,0	24	27	GE-L-15-R 1/4"-k	
315	15	R 3/8" keg	42,0	23,0	12,0	24	27	GE-L-15-R 3/8"-k	
315	15	R 1/2" keg	42,0	25,0	14,0	24	27	GE-L-15-R 1/2"-k	
160	15	R 3/4" keg	45,0	28,0	16,0	27	27	GE-L-15-R 3/4"-k	
315	18	R 3/8" keg	42,0	23,5	12,0	27	32	GE-L-18-R 3/8"-k	
315	18	R 1/2" keg	42,0	25,5	14,0	27	32	GE-L-18-R 1/2"-k	
160	18	R 3/4" keg	47,0	27,5	16,0	27	32	GE-L-18-R 3/4"-k	
160	22	R 3/8" keg	46,0	25,5	12,0	32	36	GE-L-22-R 3/8"-k	
160	22	R 1/2" keg	46,0	25,5	14,0	32	36	GE-L-22-R 1/2"-k	
160	22	R 3/4" keg	46,0	29,5	16,0	32	36	GE-L-22-R 3/4"-k	
160	22	R 1" keg	50,0	31,5	18,0	36	36	GE-L-22-R 1"-k	
160	28	R 1/2" keg	49,0	28,5	14,0	41	41	GE-L-28-R 1/2"-k	
160	28	R 3/4" keg	49,0	30,5	16,0	41	41	GE-L-28-R 3/4"-k	
160	28	R 1" keg	49,0	32,5	18,0	41	41	GE-L-28-R 1"-k	
160	28	R 1 1/4" keg	49,0	30,5	20,0	46	41	GE-L-28-R 1 1/4"-k	
160	35	R 1" keg	51,0	27,5	18,0	46	50	GE-L-35-R 1"-k	
160	35	R 1 1/4" keg	56,0	34,5	20,0	46	50	GE-L-35-R 1 1/4"-k	
160	35	R 1 1/2" keg	63,0	37,5	22,0	50	50	GE-L-35-R 1 1/2"-k	
160	42	R 1 1/4" keg	55,0	31,0	20,0	55	60	GE-L-42-R 1 1/4"-k	
160	42	R 1 1/2" keg	61,0	38,0	22,0	55	60	GE-L-42-R 1 1/2"-k	



Gerade Einschraubverschraubungen

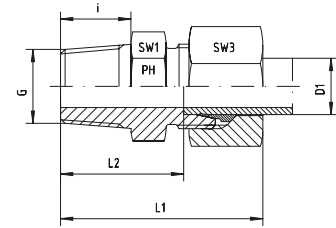
S-Reihe

Einschraubgewinde:

Whitworth-Rohrgewinde - Kegelig

Andere Sprunggrößen auf Anfrage!

(1) Die angegebenen Druckstufen sind nur gültig, wenn die Einschraublöcher mit kegeligem Gewinde vorhanden sind.



Male Stud Couplings

S-Series

Thread: BSP - Taper

Other jump sizes on request!

(1) The pressure rates are only valid, if the female parts are with tapered threads, too.

Reihe / Series S

Druck Pressure	Rohr A.D. Tube O.D.	Gewinde Thread	Ca. Maße Approx. Dimensions					Bestellzeichen Order-Code	Brutto-Preis Gross-Price
(1) PN	D1	G	L1	L2	i	SW1	SW3		Euro (€)
630	6	R 1/8" keg	36,0	19,0	8,0	14	17	GE-S-06-R 1/8"-k	
630	6	R 1/4" keg	40,0	25,0	12,0	17	17	GE-S-06-R 1/4"-k	
630	6	R 3/8" keg	40,0	25,0	12,0	17	17	GE-S-06-R 3/8"-k	
630	8	R 1/8" keg	35,0	19,0	8,0	17	19	GE-S-08-R 1/8"-k	
630	8	R 1/4" keg	40,0	25,0	12,0	17	19	GE-S-08-R 1/4"-k	
630	8	R 3/8" keg	40,0	25,0	12,0	19	19	GE-S-08-R 3/8"-k	
630	10	R 1/4" keg	41,0	25,0	12,0	19	22	GE-S-10-R 1/4"-k	
630	10	R 3/8" keg	41,0	25,0	12,0	19	22	GE-S-10-R 3/8"-k	
630	10	R 1/2" keg	45,0	26,5	14,0	22	22	GE-S-10-R 1/2"-k	
630	12	R 1/4" keg	43,0	26,5	12,0	22	24	GE-S-12-R 1/4"-k	
630	12	R 3/8" keg	42,0	25,0	12,0	22	24	GE-S-12-R 3/8"-k	
630	12	R 1/2" keg	44,0	26,5	14,0	22	24	GE-S-12-R 1/2"-k	
630	14	R 3/8" keg	46,0	27,0	12,0	24	27	GE-S-14-R 3/8"-k	
630	14	R 1/2" keg	50,5	32,0	14,0	24	27	GE-S-14-R 1/2"-k	
400	16	R 3/8" keg	48,0	28,5	12,0	27	30	GE-S-16-R 3/8"-k	
400	16	R 1/2" keg	49,0	29,0	14,0	27	30	GE-S-16-R 1/2"-k	
400	16	R 3/4" keg	53,0	31,5	16,0	27	30	GE-S-16-R 3/4"-k	
400	20	R 1/2" keg	54,0	29,5	14,0	32	36	GE-S-20-R 1/2"-k	
400	20	R 3/4" keg	55,0	33,5	16,0	32	36	GE-S-20-R 3/4"-k	
160	20	R 1" keg	58,0	35,5	18,0	36	36	GE-S-20-R 1"-k	
160	25	R 3/4" keg			16,0	41	46	GE-S-25-R 3/4"-k	*
160	25	R 1" keg	59,0	33,0	18,0	41	46	GE-S-25-R 1"-k	
160	30	R 1 1/4" keg	63,0	35,5	20,0	46	50	GE-S-30-R 1 1/4"-k	
160	38	R 1 1/2" keg	81,0	49,0	22,0	55	60	GE-S-38-R 1 1/2"-k	

*Preis auf Anfrage/*Price on request