



EDELSTAHL / STAINLESS STEEL  
VERBINDUNGSTECHNIK  
FLUID CONNECTORS

## Dichtkegel-Verschraubungen mit 24°-Kegel und O-Ring – FPM

Cone Sealing Couplings with 24°-Cone and O-ring – FPM







## DICHTKEGEL-Verschraubungen mit 24°-Kegel und O-Ring - FPM - DIN EN ISO 8434-1

CONE SEALING COUPLINGS WITH 24°-CONE AND O-RING - FPM - DIN EN ISO 8434-1



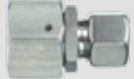

Produktgruppen	Product-Groups	Seite / Page	
<b>Allgemeine Informationen</b>	<b>General information</b>		
<b>Montageanleitung</b>	<b>Assembly Instruction</b>	9.4-9.5	
<b>O-Ringe für Dichtkegel - Verschraubungen</b>	<b>Soft - Seals for Cone - Sealing - Couplings</b>	9.6	
<b>GV - Gerade - Verschraubungen</b> GV - DKO - DKO	<b>GV - Staright - Swivel - Unions</b> GV - DKO - DKO	9.7	
<b>GVR - Gerade - Reduzierungen</b> GVR - DKO - L - DKO - L GVR - DKO - S - DKO - S GVR - DKO - L - DKO - S	<b>GVR - Straight - Swifel - Reducers</b> GVR - DKO - L - DKO - L GVR - DKO - S - DKO - S GVR - DKO - L - DKO - S	9.8 9.9 9.10	
<b>EW - Einstellbare - Winkel - Verschraubungen</b> EW - Standard EW - SC EW - OMD EW - Whitworth - Zylindrisch - Standard EW - Whitworth - Zylindrisch - SC EW - Whitworth - Zylindrisch - OMD EW - Metrisch Feingewinde - Zyl. - Standard EW - Metrisch Feingewinde - Zyl. - SC EW - Metrisch Feingewinde - Zyl. - OMD	<b>EW - Adjustable - Elbows</b> EW - Standard EW - SC EW - OMD EW - BSP - Parallel - Standard EW - BSP - Parallel - SC EW - BSP - Parallel - OMD EW - Metric - Standard EW - Metric - Standard EW - Metric - OMD	9.11 9.12 9.13 9.14 9.15 9.16 9.17 9.18 9.19	
<b>EV - Einstellbare - 45° - Winkel - Verschraubungen</b> EV - L- und S-Reihe - Standard EV - L- und S-Reihe - SC EV - L- und S-Reihe - OMD	<b>EV - Adjustable - 45° - Elbows</b> EV - L- and S-Series - Standard EV - L- and S-Series - SC EV - L- and S-Series - OMD	9.20 9.21 9.22	

**Standard** = Überwurfmutter blank / Tube nuts are supplied unplated  
**SC** = Überwurfmutter bis Größe 12-S ist gleitbeschichtet / Tube nuts until size 12-L are supplied chemical plated  
= Überwurfmutter ab Größe 12-S ist mit versilbertem Gewinde / Tube nuts from size 12-S are supplied with silver plated thread  
**OMD** = Verschraubung ohne Überwurfmutter und Schneidring am Außengewinde / Couplings are supplied without nut and cutting ring at male thread



## DICHTKEGEL-Verschraubungen mit 24°-Kegel und O-Ring - FPM - DIN EN ISO 8434-1

CONE SEALING COUPLINGS WITH 24°-CONE AND O-RING - FPM - DIN EN ISO 8434-1

Produktgruppen	Product-Groups	Seite / Page	
<b>ET - Einstellbare - T - Verschraubungen</b>	<b>ET - Adjustable - Branch - TEES</b>		
ET - Standard	ET - Standard	9.23	
ET - SC	ET - SC	9.24	
ET - OMD	ET - OMD	9.25	
ET - Whitworth - Zylindrisch - Standard	ET - BSP - Parallel - Standard	9.26	
ET - Whitworth - Zylindrisch - SC	ET - BSP - Parallel - SC	9.27	
ET - Whitworth - Zylindrisch - OMD	ET - BSP - Parallel - OMD	9.28	
ET - Metrisch Feingewinde - Zylindrisch - Standard	ET - Metric - Standard	9.29	
ET - Metrisch Feingewinde - Zylindrisch - SC	ET - Metric - SC	9.30	
ET - Metrisch Feingewinde - Zylindrisch - OMD	ET - Metric - OMD	9.31	
<b>EL - Einstellbare - L - Verschraubungen</b>	<b>EL - Adjustable - Run - TEES</b>		
EL - Standard	EL - Standard	9.32	
EL - SC	EL - SC	9.33	
EL - OMD	EL - OMD	9.34	
EL - Whitworth - Zylindrisch - Standard	EL - BSP - Parallel - Standard	9.35	
EL - Whitworth - Zylindrisch - SC	EL - BSP - Parallel - SC	9.36	
EL - Whitworth - Zylindrisch - OMD	EL - BSP - Parallel - OMD	9.37	
EL - Metr. Feingewinde - Zylindrisch - Standard	EL - Metric - Standard	9.38	
EL - Metr. Feingewinde - Zylindrisch - SC	EL - Metric - SC	9.39	
EL - Metr. Feingewinde - Zylindrisch - OMD	EL - Metric - OMD	9.40	
<b>RED - Reduzier - Verschraubungen</b>	<b>RED - Reducing - Couplings</b>		
RED - DKOL - Standard	RED - DKOL - Standard	9.41	
RED - DKOL - SC	RED - DKOL - SC	9.42	
RED - DKOL - OMD	RED - DKOL - OMD	9.43	
RED - DKOS - Standard	RED - DKOS - Standard	9.44	
RED - DKOS - SC	RED - DKOS - SC	9.45	
RED - DKOS - OMD	RED - DKOS - OMD	9.46	
<b>EGE - Gerade - Einschraubstutzen</b>	<b>EGE - Swivel - Female- Male - Connectors</b>		
EGE - Metrisch - Zylindrisch	EGE - Metric - Parallel	9.47	
EGE - Whitworth - Zylindrisch	EGE - BSP - Parallel	9.48	
EGE - NPT	EGE - NPT	9.50	

**Standard** = Überwurfmutter blank / Tube nuts are supplied unplated

**SC** = Überwurfmutter bis Größe 12-S ist gleitbeschichtet / Tube nuts until size 12-L are supplied chemical plated



= Überwurfmutter ab Größe 12-S ist mit versilbertem Gewinde / Tube nuts from size 12-S are supplied with silver plated thread

**OMD** = Verschraubung ohne Überwurfmutter und Schneidring am Außengewinde / Couplings are supplied without nut and cutting ring at male thread



## DICHTKEGEL-VERSCHRAUBUNGEN MIT 24°-KEGEL UND O-RING - FPM - DIN EN ISO 8434-1

CONE SEALING COUPLINGS WITH 24°-CONE AND O-RING - FPM - DIN EN ISO 8434-1

Produktgruppen	Product-Groups	Seite / Page	
<b>MVE - Einstellbare - Manometer - Verschraubungen</b> MVE - DKOL	<b>MVE - Swivel - Pressure - Gauge - Connectors</b> MVE - DKOL	9.51	
<b>DA - Distanzadapter L- und S-Reihe</b> DA - DKO - Standard	<b>DA - Distance - Adaptors - L- and S-Series</b> DA - DKO - Standard	9.52	
DA - DKO - SC	DA - DKO - SC	9.53	
DA - DKO - OMD	DA - DKO - OMD	9.54	

**Standard** = Überwurfmutter blank / Tube nuts are supplied unplated

**SC** = Überwurfmutter bis Größe 12-S ist gleitbeschichtet / Tube nuts until size 12-L are supplied chemical plated

= Überwurfmutter ab Größe 12-S ist mit versilbertem Gewinde / Tube nuts from size 12-S are supplied with silver plated thread

**OMD** = Verschraubung ohne Überwurfmutter und Schneidring am Außengewinde / Couplings are supplied without nut and cutting ring at male thread

**Mit 24°-Kegel und O-Ring - FPM - DIN EN ISO 8434-1**

**1.**

PH Dichtkegel-Verschraubungen müssen im dazugehörigen Verschraubungskörper endmontiert werden.



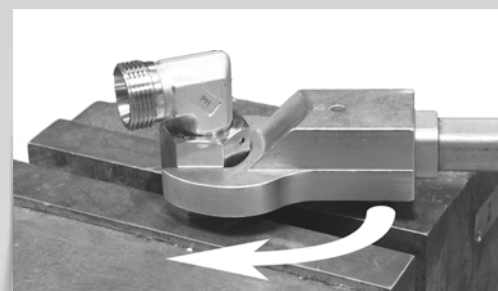
**2.**

Bei Edelstahl-Verschraubungen müssen die Gewinde geschmiert werden. Es handelt sich hierbei um spezielle Schmierstoffe für Edelstahl-Verschraubungen (siehe Kapitel 12).



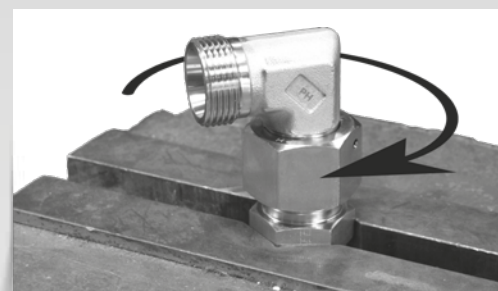
**3.**

Überwurfmutter von Hand bis zum fühlbaren Anschlag aufschrauben.



**4.**

Danach mit einer 1/4 Umdrehung festziehen (1 1/2 Schlüsselflächen).





**With 24°-Cone and O-ring - FPM - DIN EN ISO 8434-1**

**1.**

PH cone sealing couplings must be pre-assembled in the associated body.



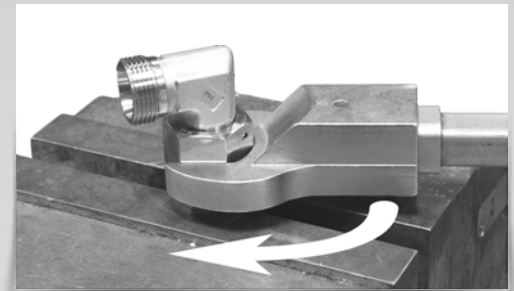
**2.**

Stainless steel fittings must be lubricated at the thread.  
These are special lubricants for stainless steel fittings (see chapter 12).



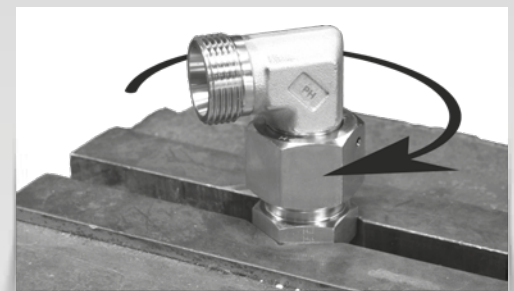
**3.**

Screw the nut by hand onto the body until stop is felt.



**4.**

Then tighten it with a 1/4 turn (1 1/2 spanner flat).

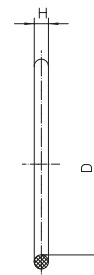


# O-RINGE FÜR DICHTKEGEL - VERSCHRAUBUNGEN

SOFT - SEALS FOR CONE - SEALING - COUPLINGS

O-Ringe für Verschraubungen mit Dichtkegel  
Material: FPM Shore-Härte ca. 90  
Für Verschraubungen Typ: DA / EGE / EL / ET / EV / EW / GVO / MVE / RED  
Auf Anfrage: NBR / EPDM

O-rings for taper couplings  
Material: FPM  
For Couplings typ: DA / EGE / EL / ET / EV / EW / GVO / MVE / RED  
On Request: NBR / EPDM



Reihe L Series L	D	H	Bemerkungen Notes
DKOL-06	4,5	1,3	
DKOL-08	6,0	1,5	
DKOL-10	8,0	1,5	
DKOL-12	10,0	1,5	
DKOL-15	12,0	2,0	
DKOL-18	15,0	2,0	
DKOL-22	20,0	2,0	
DKOL-28	25,0	2,0	
DKOL-35	32,0	2,5	
DKOL-42	38,0	2,5	

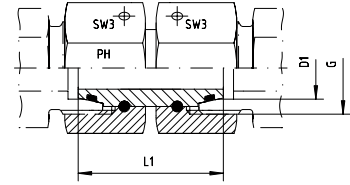
Reihe S Series S	D	H	Bemerkungen Notes
DKOS-06	4,5	1,3	
DKOS-08	6,0	1,5	
DKOS-10	8,0	1,5	
DKOS-12	10,0	1,5	
DKOS-14	12,0	2,0	
DKOS-16	13,0	2,0	
DKOS-20	16,3	2,4	
DKOS-25	21,3	2,4	
DKOS-30	25,3	2,4	
DKOS-38	33,3	2,4	





Mit Dichtkegel und O-Ring - FPM  
Passend in Bohrungsform W DIN 3861

With Taper and O-ring - FPM  
For Type of Port End W DIN 3861



Reihe / Series L

Druck Pressure	Rohr A.D. Tube O.D.	Gewinde Thread	Ca. Maße Approx. Dimensions		Bemerkungen Notes	Bestellzeichen Order-Code
PN	D1	G	L1	SW3		
500	6	M 12 x 1,5	33,0	14		GV-DKOL-06
500	8	M 14 x 1,5	33,7	17		GV-DKOL-08
500	10	M 16 x 1,5	34,5	19		GV-DKOL-10
400	12	M 18 x 1,5	35,0	22		GV-DKOL-12
400	15	M 22 x 1,5	39,0	27		GV-DKOL-15
400	18	M 26 x 1,5	38,0	32		GV-DKOL-18
250	22	M 30 x 2	43,0	36		GV-DKOL-22
250	28	M 36 x 2	46,0	41		GV-DKOL-28
250	35	M 45 x 2	47,0	50		GV-DKOL-35
250	42	M 52 x 2	52,0	60		GV-DKOL-42

Reihe / Series S

Druck Pressure	Rohr A.D. Tube O.D.	Gewinde Thread	Ca. Maße Approx. Dimensions		Bemerkungen Notes	Bestellzeichen Order-Code
PN	D1	G	L1	SW3		
800	6	M 14 x 1,5	33,0	17		GV-DKOS-06
800	8	M 16 x 1,5	36,0	19		GV-DKOS-08
800	10	M 18 x 1,5	36,0	22		GV-DKOS-10
630	12	M 20 x 1,5	38,0	24		GV-DKOS-12
630	14	M 22 x 1,5	38,0	27		GV-DKOS-14
630	16	M 24 x 1,5	39,0	30		GV-DKOS-16
420	20	M 30 x 2	46,5	36		GV-DKOS-20
420	25	M 36 x 2	47,5	46		GV-DKOS-25
420	30	M 42 x 2	52,0	50		GV-DKOS-30
420	38	M 52 x 2	52,5	60		GV-DKOS-38

# GVR - GERADE - REDUZIERUNGEN

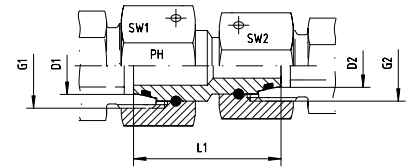
## GVR - STRAIGHT - SWIFEL - REDUCERS



EDELSTAHL / STAINLESS STEEL  
VERBINDUNGSTECHNIK  
FLUID CONNECTORS

Beide Seiten mit drehbarer Mutter - DKO  
Mit Dichtkegel und O-Ring - FPM  
Passend in Bohrungsform W DIN 3861

Both sides with Swivel Nut - DKO  
With Taper and O-ring - FPM  
For Type of Port End W DIN 3861



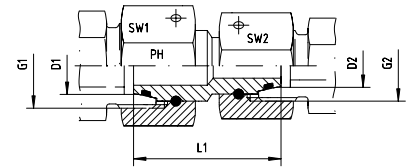
### Reihe / Series L

Druck Pressure	Rohr A.D. Tube O.D.		Gewinde Thread		Ca. Maße Approx. Dimensions			Bemerkungen Notes	Bestellzeichen Order-Code
PN	D1	D2	G1	G2	L1	SW1	SW2		
500	8	6	M 14 x 1,5	M 12 x 1,5	31,0	17	14		GVR-DKO-08-L/06-L
500	10	6	M 16 x 1,5	M 12 x 1,5	34,0	19	14		GVR-DKO-10-L/06-L
500	10	8	M 16 x 1,5	M 14 x 1,5	33,0	19	17		GVR-DKO-10-L/08-L
400	12	6	M 18 x 1,5	M 12 x 1,5	34,0	22	14		GVR-DKO-12-L/06-L
400	12	8	M 18 x 1,5	M 14 x 1,5	34,0	22	17		GVR-DKO-12-L/08-L
400	12	10	M 18 x 1,5	M 16 x 1,5	33,0	22	19		GVR-DKO-12-L/10-L
400	15	8	M 22 x 1,5	M 14 x 1,5	37,0	27	17		GVR-DKO-15-L/08-L
400	15	10	M 22 x 1,5	M 16 x 1,5	38,0	27	19		GVR-DKO-15-L/10-L
400	15	12	M 22 x 1,5	M 18 x 1,5	35,0	27	22		GVR-DKO-15-L/12-L
400	18	10	M 26 x 1,5	M 16 x 1,5	36,3	32	19		GVR-DKO-18-L/10-L
400	18	12	M 26 x 1,5	M 18 x 1,5	38,0	32	22		GVR-DKO-18-L/12-L
400	18	15	M 26 x 1,5	M 22 x 1,5	43,0	32	27		GVR-DKO-18-L/15-L
250	22	12	M 30 x 2	M 18 x 1,5	42,0	36	22		GVR-DKO-22-L/12-L
250	22	15	M 30 x 2	M 22 x 1,5	43,5	36	27		GVR-DKO-22-L/15-L
250	22	18	M 30 x 2	M 26 x 1,5	43,0	36	32		GVR-DKO-22-L/18-L
250	28	15	M 36 x 2	M 22 x 1,5		41	27		GVR-DKO-28-L/15-L
250	28	18	M 36 x 2	M 26 x 1,5	46,0	41	32		GVR-DKO-28-L/18-L
250	28	22	M 36 x 2	M 30 x 2		41	36		GVR-DKO-28-L/22-L
250	35	18	M 45 x 2	M 26 x 1,5	44,0	50	32		GVR-DKO-35-L/18-L
250	35	22	M 45 x 2	M 30 x 2		50	36		GVR-DKO-35-L/22-L
250	35	28	M 45 x 2	M 36 x 2	46,5	50	41		GVR-DKO-35-L/28-L
250	42	22	M 52 x 2	M 30 x 2	47,0	60	36		GVR-DKO-42-L/22-L
250	42	28	M 52 x 2	M 36 x 2	47,5	60	41		GVR-DKO-42-L/28-L
250	42	35	M 52 x 2	M 45 x 2	52,0	60	50		GVR-DKO-42-L/35-L



Beide Seiten mit drehbarer Mutter - DKO  
Mit Dichtkegel und O-Ring - FPM  
Passend in Bohrungsform W DIN 3861

Both sides with Swivel Nut - DKO  
With Taper and O-ring - FPM  
For Type of Port End W DIN 3861

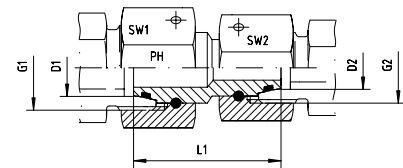


Reihe / Series S

Druck Pressure	Rohr A.D. Tube O.D.		Gewinde Thread		Ca. Maße Approx. Dimensions			Bemerkungen Notes	Bestellzeichen Order-Code
	D1	D2	G1	G2	L1	SW1	SW2		
800	8	6	M 16 x 1,5	M 14 x 1,5	35,5	19	17		GVR-DKO-08-S/06-S
800	10	6	M 18 x 1,5	M 14 x 1,5	35,5	22	17		GVR-DKO-10-S/06-S
800	10	8	M 18 x 1,5	M 16 x 1,5	37,0	22	19		GVR-DKO-10-S/08-S
630	12	6	M 20 x 1,5	M 14 x 1,5	36,0	24	17		GVR-DKO-12-S/06-S
630	12	8	M 20 x 1,5	M 16 x 1,5	37,5	24	19		GVR-DKO-12-S/08-S
630	12	10	M 20 x 1,5	M 18 x 1,5	37,5	24	22		GVR-DKO-12-S/10-S
630	16	10	M 24 x 1,5	M 18 x 1,5	37,5	30	22		GVR-DKO-16-S/10-S
630	16	12	M 24 x 1,5	M 20 x 1,5	38,0	30	24		GVR-DKO-16-S/12-S
630	16	14	M 24 x 1,5	M 22 x 1,5	47,0	30	27		GVR-DKO-16-S/14-S
420	20	12	M 30 x 2	M 20 x 1,5	43,0	36	24		GVR-DKO-20-S/12-S
420	20	14	M 30 x 2	M 22 x 1,5		36	27		GVR-DKO-20-S/14-S
420	20	16	M 30 x 2	M 24 x 1,5	43,0	36	30		GVR-DKO-20-S/16-S
420	25	16	M 36 x 2	M 24 x 1,5	46,0	46	30		GVR-DKO-25-S/16-S
420	25	20	M 36 x 2	M 30 x 2	46,0	46	36		GVR-DKO-25-S/20-S
420	30	16	M 42 x 2	M 24 x 1,5	46,0	50	30		GVR-DKO-30-S/16-S
420	30	20	M 42 x 2	M 30 x 2	52,0	50	36		GVR-DKO-30-S/20-S
420	30	25	M 42 x 2	M 36 x 2	52,0	50	46		GVR-DKO-30-S/25-S
420	38	20	M 52 x 2	M 30 x 2	52,0	60	36		GVR-DKO-38-S/20-S
420	38	25	M 52 x 2	M 36 x 2	53,0	60	46		GVR-DKO-38-S/25-S
420	38	30	M 52 x 2	M 42 x 2	52,0	60	50		GVR-DKO-38-S/30-S

Beide Seiten mit drehbarer Mutter - DKO  
Mit Dichtkegel und O-Ring - FPM  
Passend in Bohrungsform W DIN 3861

Both sides with Swivel Nut - DKO  
With Taper and O-ring - FPM  
For Type of Port End W DIN 3861



Reihe / Series L / S

Druck Pressure	Rohr A.D. Tube O.D.		Gewinde Thread		Ca. Maße Approx. Dimensions			Bestellzeichen Order-Code
PN	D1	D2	G1	G2	L1	SW1	SW2	
500	6	6	M 14 x 1,5	M 12 x 1,5	33,0	17	14	GVR-DKO-06-L/06-S
500	8	6	M 14 x 1,5	M 14 x 1,5		17	17	GVR-DKO-08-L/06-S
500	8	8	M 16 x 1,5	M 14 x 1,5	35,0	19	17	GVR-DKO-08-L/08-S
500	10	10	M 18 x 1,5	M 16 x 1,5	35,3	22	19	GVR-DKO-10-L/10-S
400	12	10	M 18 x 1,5	M 18 x 1,5	32,5	22	22	GVR-DKO-12-L/10-S
400	12	12	M 20 x 1,5	M 18 x 1,5	37,0	24	22	GVR-DKO-12-L/12-S
400	15	12	M 22 x 1,5	M 20 x 1,5	38,5	27	24	GVR-DKO-15-L/12-S
400	15	14	M 22 x 1,5	M 22 x 1,5	44,5	27	27	GVR-DKO-15-L/14-S
400	18	16	M 26 x 1,5	M 24 x 1,5	40,0	32	30	GVR-DKO-18-L/16-S
250	22	20	M 30 x 2	M 30 x 2	53,0	36	36	GVR-DKO-22-L/20-S
250	28	25	M 36 x 2	M 36 x 2	46,0	46	41	GVR-DKO-28-L/25-S
250	35	30	M 45 x 2	M 42 x 2	51,0	50	50	GVR-DKO-35-L/30-S
250	42	38	M 52 x 2	M 52 x 2	52,0	60	60	GVR-DKO-42-L/38-S

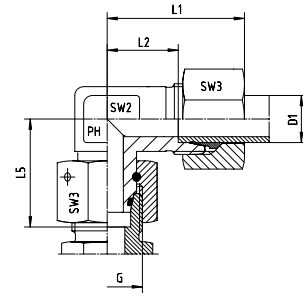
Reihe / Series S / L

Druck Pressure	Rohr A.D. Tube O.D.		Gewinde Thread		Ca. Maße Approx. Dimensions			Bestellzeichen Order-Code
PN	D1	D2	G1	G2	L1	SW1	SW2	
500	10	8	M 18 x 1,5	M 14 x 1,5	33,0	22	17	GVR-DKO-10-S/08-L
500	12	8	M 20 x 1,5	M 14 x 1,5	34,0	24	17	GVR-DKO-12-S/08-L
500	12	10	M 20 x 1,5	M 16 x 1,5	33,0	24	19	GVR-DKO-12-S/10-L
500	16	10	M 24 x 1,5	M 16 x 1,5	35,5	30	19	GVR-DKO-16-S/10-L
400	16	12	M 24 x 1,5	M 18 x 1,5	39,0	30	22	GVR-DKO-16-S/12-L
400	16	15	M 24 x 1,5	M 22 x 1,5	38,5	30	27	GVR-DKO-16-S/15-L
400	20	18	M 30 x 2	M 26 x 1,5	43,0	36	32	GVR-DKO-20-S/18-L
400	25	18	M 36 x 2	M 26 x 1,5	46,0	46	32	GVR-DKO-25-S/18-L
250	25	22	M 36 x 2	M 30 x 2	46,0	46	36	GVR-DKO-25-S/22-L
250	30	28	M 42 x 2	M 36 x 2	49,5	50	41	GVR-DKO-30-S/28-L
250	38	35	M 52 x 2	M 45 x 2	53,0	60	50	GVR-DKO-38-S/35-L



Einstellbare Winkelverschraubungen mit Dichtkegel und O-Ring FPM  
Rohrseitig Schneidringanschluss

With Taper and O-ring - FPM  
Cutting Ring Connection at the Tube Connection side



Reihe / Series L

Druck Pressure	Rohr A.D. Tube O.D.	Gewinde Thread	Ca. Maße Approx. Dimensions					Bemerkungen Notes	Bestellzeichen Order-Code
PN	D1	G	L1	L2	L5	SW2	SW3		
500	6	M 12 x 1,5	27,0	12,0	26,0	12	14		EW-DKOL-06
500	8	M 14 x 1,5	29,0	14,0	27,5	12	17		EW-DKOL-08
500	10	M 16 x 1,5	30,0	15,0	29,0	14	19		EW-DKOL-10
400	12	M 18 x 1,5	32,0	17,0	29,5	17	22		EW-DKOL-12
400	15	M 22 x 1,5	36,0	21,0	32,5	19	27		EW-DKOL-15
400	18	M 26 x 1,5	40,0	23,5	35,5	24	32		EW-DKOL-18
250	22	M 30 x 2	44,0	27,5	38,5	27	36		EW-DKOL-22
250	28	M 36 x 2	47,0	30,5	41,5	36	41		EW-DKOL-28
250	35	M 45 x 2	56,0	34,5	51,0	41	50		EW-DKOL-35
250	42	M 52 x 2	63,0	40,0	56,0	50	60		EW-DKOL-42

Reihe / Series S

Druck Pressure	Rohr A.D. Tube O.D.	Gewinde Thread	Ca. Maße Approx. Dimensions					Bestellzeichen Order-Code
PN	D1	G	L1	L2	L5	SW2	SW3	
800	6	M 14 x 1,5	31,0	16,0	27,0	12	17	EW-DKOS-06
800	8	M 16 x 1,5	32,0	17,0	27,5	14	19	EW-DKOS-08
800	10	M 18 x 1,5	34,0	17,5	30,0	17	22	EW-DKOS-10
630	12	M 20 x 1,5	38,0	21,5	31,0	17	24	EW-DKOS-12
630	14	M 22 x 1,5	40,0	22,0	35,0	19	27	EW-DKOS-14
630	16	M 24 x 1,5	43,0	24,5	36,5	24	30	EW-DKOS-16
420	20	M 30 x 2	48,0	26,5	44,5	27	36	EW-DKOS-20
420	25	M 36 x 2	54,0	30,0	50,0	36	46	EW-DKOS-25
420	30	M 42 x 2	62,0	35,5	55,0	41	50	EW-DKOS-30
420	38	M 52 x 2	72,0	41,0	63,0	50	60	EW-DKOS-38

# EW - EINSTELLBARE - WINKEL - VERSCHRAUBUNGEN

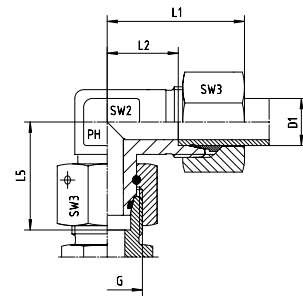
## EW - ADJUSTABLE - ELBOWS



EDELSTAHL / STAINLESS STEEL  
VERBINDUNGSTECHNIK  
FLUID CONNECTORS

Einstellbare Winkelverschraubungen mit Dichtkegel  
und O-Ring FPM  
Rohrseitig Schneidringanschluss

With Taper and O-ring - FPM  
Cutting Ring Connection at the Tube Connection side



### Reihe / Series L

Druck Pressure	Rohr A.D. Tube O.D.	Gewinde Thread	Ca. Maße Approx. Dimensions					Bemerkungen Notes	Bestellzeichen Order-Code
PN	D1	G	L1	L2	L5	SW2	SW3		
500	6	M 12 x 1,5	27,0	12,0	26,0	12	14		EW-DKOL-06-SC
500	8	M 14 x 1,5	29,0	14,0	27,5	12	17		EW-DKOL-08-SC
500	10	M 16 x 1,5	30,0	15,0	29,0	14	19		EW-DKOL-10-SC
400	12	M 18 x 1,5	32,0	17,0	29,5	17	22		EW-DKOL-12-SC
400	15	M 22 x 1,5	36,0	21,0	32,5	19	27		EW-DKOL-15-SC
400	18	M 26 x 1,5	40,0	23,5	35,5	24	32		EW-DKOL-18-SC
250	22	M 30 x 2	44,0	27,5	38,5	27	36		EW-DKOL-22-SC
250	28	M 36 x 2	47,0	30,5	41,5	36	41		EW-DKOL-28-SC
250	35	M 45 x 2	56,0	34,5	51,0	41	50		EW-DKOL-35-SC
250	42	M 52 x 2	63,0	40,0	56,0	50	60		EW-DKOL-42-SC

### Reihe / Series S

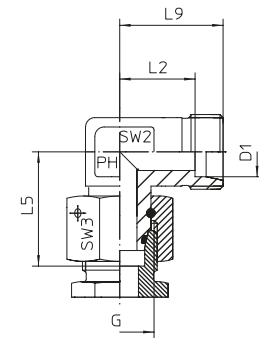
Druck Pressure	Rohr A.D. Tube O.D.	Gewinde Thread	Ca. Maße Approx. Dimensions					Bemerkungen Notes	Bestellzeichen Order-Code
PN	D1	G	L1	L2	L5	SW2	SW3		
800	6	M 14 x 1,5	31,0	16,0	27,0	12	17		EW-DKOS-06-SC
800	8	M 16 x 1,5	32,0	17,0	27,5	14	19		EW-DKOS-08-SC
800	10	M 18 x 1,5	34,0	17,5	30,0	17	22		EW-DKOS-10-SC
630	12	M 20 x 1,5	38,0	21,5	31,0	17	24		EW-DKOS-12-SC
630	14	M 22 x 1,5	40,0	22,0	35,0	19	27		EW-DKOS-14-SC
630	16	M 24 x 1,5	43,0	24,5	36,5	24	30		EW-DKOS-16-SC
420	20	M 30 x 2	48,0	26,5	44,5	27	36		EW-DKOS-20-SC
420	25	M 36 x 2	54,0	30,0	50,0	36	46		EW-DKOS-25-SC
420	30	M 42 x 2	62,0	35,5	55,0	41	50		EW-DKOS-30-SC
420	38	M 52 x 2	72,0	41,0	63,0	50	60		EW-DKOS-38-SC





Einstellbare Winkelverschraubungen mit Dichtkegel  
und O-Ring FPM  
Rohrseitig Schneidringanschluss

With Taper and O-ring - FPM  
Cutting Ring Connection at the Tube Connection side



Reihe / Series L

Druck Pressure	Rohr A.D. Tube O.D.	Gewinde Thread	Ca. Maße Approx. Dimensions					Bemerkungen Notes	Bestellzeichen Order-Code
PN	D1	G	L2	L5	L9	SW2	SW3		
500	6	M 12 x 1,5	12,0	26,0	19,0	12,0	14,0		EW-DKOL-06-OMD
500	8	M 14 x 1,5	14,0	27,5	21,0	12,0	17,0		EW-DKOL-08-OMD
500	10	M 16 x 1,5	15,0	29,0	22,0	14,0	19,0		EW-DKOL-10-OMD
400	12	M 18 x 1,5	17,0	29,5	24,0	17,0	22,0		EW-DKOL-12-OMD
400	15	M 22 x 1,5	21,0	32,5	28,0	19,0	27,0		EW-DKOL-15-OMD
400	18	M 26 x 1,5	23,5	35,5	31,0	24,0	32,0		EW-DKOL-18-OMD
250	22	M 30 x 2	27,5	38,5	35,0	27,0	36,0		EW-DKOL-22-OMD
250	28	M 36 x 2	30,5	41,5	38,0	36,0	41,0		EW-DKOL-28-OMD
250	35	M 45 x 2	34,5	51,0	45,0	41,0	50,0		EW-DKOL-35-OMD
250	42	M 52 x 2	40,0	56,0	51,0	50,0	60,0		EW-DKOL-42-OMD

Reihe / Series S

Druck Pressure	Rohr A.D. Tube O.D.	Gewinde Thread	Ca. Maße Approx. Dimensions					Bemerkungen Notes	Bestellzeichen Order-Code
PN	D1	G	L2	L5	L9	SW2	SW3		
800	6	M 14 x 1,5	16,0	27,0	23,0	12,0	17,0		EW-DKOS-06-OMD
800	8	M 16 x 1,5	17,0	27,5	24,0	14,0	19,0		EW-DKOS-08-OMD
800	10	M 18 x 1,5	17,5	30,0	25,0	17,0	22,0		EW-DKOS-10-OMD
630	12	M 20 x 1,5	21,5	31,0	29,0	17,0	24,0		EW-DKOS-12-OMD
630	14	M 22 x 1,5	22,0	35,0	30,0	19,0	27,0		EW-DKOS-14-OMD
630	16	M 24 x 1,5	24,5	36,5	33,0	24,0	30,0		EW-DKOS-16-OMD
420	20	M 30 x 2	26,5	44,5	37,0	27,0	36,0		EW-DKOS-20-OMD
420	25	M 36 x 2	30,0	50,0	42,0	36,0	46,0		EW-DKOS-25-OMD
420	30	M 42 x 2	35,5	55,0	49,0	41,0	50,0		EW-DKOS-30-OMD
420	38	M 52 x 2	41,0	63,0	57,0	50,0	60,0		EW-DKOS-38-OMD

# EW - EINSTELLBARE - WINKEL - VERSCHRAUBUNGEN

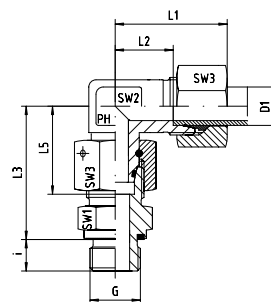
## EW - ADJUSTABLE - ELBOWS



EDELSTAHL / STAINLESS STEEL  
VERBINDUNGSTECHNIK  
FLUID CONNECTORS

Einstellbare Winkel-Verschraubungen mit Dichtkegel und O-Ring FPM  
Rohrseitig Schneidringanschluss  
Einschraubgewinde:  
Whitworth-Rohrgewinde - Zylindrisch  
wd = Abdichtung durch Profildichtung - FPM

With Taper and O-ring - FPM  
Cutting Ring Connection at the Tube Connection side  
Thread: BSP - Parallel  
wd = Sealing by an Elastomer Profiled Ring - FPM



### Reihe / Series L

Druck Pressure	Rohr A.D. Tube O.D.	Gewinde Thread	Ca. Maße Approx. Dimensions								Bestellzeichen Order-Code
PN	D1	G	L1	L2	L3	L5	i	SW1	SW2	SW3	
500	6	G 1/8"	27,0	12,0	34,5	26,0	8,0	14	12	14	EW-DKOL-06-G 1/8"-wd
500	8	G 1/4"	29,0	14,0	37,5	27,5	12,0	17	12	17	EW-DKOL-08-G 1/4"-wd
500	10	G 1/4"	30,0	15,0	40,0	29,0	12,0	19	14	19	EW-DKOL-10-G 1/4"-wd
400	12	G 1/4"	32,0	17,0	42,0	29,5	12,0	19	17	22	EW-DKOL-12-G 1/4"-wd
400	12	G 3/8"	32,0	17,0	42,0	29,5	12,0	22	17	22	EW-DKOL-12-G 3/8"-wd
400	12	G 1/2"	32,0	17,0	43,0	29,5	14,0	27	17	22	EW-DKOL-12-G 1/2"-wd
400	15	G 1/2"	36,0	21,0	46,0	32,5	14,0	27	19	27	EW-DKOL-15-G 1/2"-wd
400	18	G 1/2"	40,0	23,5	50,0	35,5	14,0	27	24	32	EW-DKOL-18-G 1/2"-wd
250	22	G 3/4"	44,0	27,5	55,0	38,5	16,0	32	27	36	EW-DKOL-22-G 3/4"-wd
250	28	G 1"	47,0	30,5	59,0	41,5	18,0	41	36	41	EW-DKOL-28-G 1"-wd
250	35	G 1 1/4"	56,0	34,5	68,5	51,0	20,0	50	41	50	EW-DKOL-35-G 1 1/4"-wd
250	42	G 1 1/2"	63,0	40,0	75,0	56,0	22,0	55	50	60	EW-DKOL-42-G 1 1/2"-wd

### Reihe / Series S

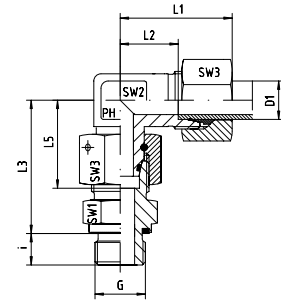
Druck Pressure	Rohr A.D. Tube O.D.	Gewinde Thread	Ca. Maße Approx. Dimensions								Bestellzeichen Order-Code
PN	D1	G	L1	L2	L3	L5	i	SW1	SW2	SW3	
800	6	G 1/4"	31,0	16,0	40,0	27,0	12,0	19	12	17	EW-DKOS-06-G 1/4"-wd
800	8	G 1/4"	32,0	17,0	42,5	27,5	12,0	19	14	19	EW-DKOS-08-G 1/4"-wd
800	10	G 3/8"	34,0	17,5	45,0	30,0	12,0	22	17	22	EW-DKOS-10-G 3/8"-wd
630	12	G 3/8"	38,0	21,5	48,0	31,0	12,0	22	17	24	EW-DKOS-12-G 3/8"-wd
630	12	G 1/2"	38,0	21,5	49,0	31,0	14,0	27	17	24	EW-DKOS-12-G 1/2"-wd
630	14	G 1/2"	40,0	22,0	54,0	35,0	14,0	27	19	27	EW-DKOS-14-G 1/2"-wd
630	16	G 1/2"	43,0	24,5	55,0	36,5	14,0	27	24	30	EW-DKOS-16-G 1/2"-wd
420	20	G 3/4"	48,0	26,5	65,0	44,5	16,0	32	27	36	EW-DKOS-20-G 3/4"-wd
420	25	G 1"	54,0	30,0	73,0	50,0	18,0	41	36	46	EW-DKOS-25-G 1"-wd
420	30	G 1 1/4"	62,0	35,5	78,5	55,0	20,0	50	41	50	EW-DKOS-30-G 1 1/4"-wd
420	38	G 1 1/2"	72,0	41,0	89,0	63,0	22,0	55	50	60	EW-DKOS-38-G 1 1/2"-wd





Einstellbare Winkel-Verschraubungen mit Dichtkegel und O-Ring FPM  
Rohrseitig Schneidringanschluss  
Einschraubgewinde:  
Whitworth-Rohrgewinde - Zylindrisch  
wd = Abdichtung durch Profildichtung - FPM

With Taper and O-ring - FPM  
Cutting Ring Connection at the Tube Connection side  
Thread: BSP - Parallel  
wd = Sealing by an Elastomer Profiled Ring - FPM



Reihe / Series L

Druck Pressure	Rohr A.D. Tube O.D.	Gewinde Thread	Ca. Maße Approx. Dimensions								Bestellzeichen Order-Code
PN	D1	G	L1	L2	L3	L5	i	SW1	SW2	SW3	
500	6	G 1/8"	27,0	12,0	34,5	26,0	8,0	14	12	14	EW-DKOL-06-G 1/8"-wd-SC
500	8	G 1/4"	29,0	14,0	37,5	27,5	12,0	17	12	17	EW-DKOL-08-G 1/4"-wd-SC
500	10	G 1/4"	30,0	15,0	40,0	29,0	12,0	19	14	19	EW-DKOL-10-G 1/4"-wd-SC
400	12	G 1/4"	32,0	17,0	42,0	29,5	12,0	19	17	22	EW-DKOL-12-G 1/4"-wd-SC
400	12	G 3/8"	32,0	17,0	42,0	29,5	12,0	22	17	22	EW-DKOL-12-G 3/8"-wd-SC
400	12	G 1/2"	32,0	17,0	43,0	29,5	14,0	27	17	22	EW-DKOL-12-G 1/2"-wd-SC
400	15	G 1/2"	36,0	21,0	46,0	32,5	14,0	27	19	27	EW-DKOL-15-G 1/2"-wd-SC
400	18	G 1/2"	40,0	23,5	50,0	35,5	14,0	27	24	32	EW-DKOL-18-G 1/2"-wd-SC
250	22	G 3/4"	44,0	27,5	55,0	38,5	16,0	32	27	36	EW-DKOL-22-G 3/4"-wd-SC
250	28	G 1"	47,0	30,5	59,0	41,5	18,0	41	36	41	EW-DKOL-28-G 1"-wd-SC
250	35	G 1 1/4"	56,0	34,5	68,5	51,0	20,0	50	41	50	EW-DKOL-35-G 1 1/4"-wd-SC
250	42	G 1 1/2"	63,0	40,0	75,0	56,0	22,0	55	50	60	EW-DKOL-42-G 1 1/2"-wd-SC

Reihe / Series S

Druck Pressure	Rohr A.D. Tube O.D.	Gewinde Thread	Ca. Maße Approx. Dimensions								Bestellzeichen Order-Code
PN	D1	G	L1	L2	L3	L5	i	SW1	SW2	SW3	
800	6	G 1/4"	31,0	16,0	40,0	27,0	12,0	19	12	17	EW-DKOS-06-G 1/4"-wd-SC
800	8	G 1/4"	32,0	17,0	42,5	27,5	12,0	19	14	19	EW-DKOS-08-G 1/4"-wd-SC
800	10	G 3/8"	34,0	17,5	45,0	30,0	12,0	22	17	22	EW-DKOS-10-G 3/8"-wd-SC
630	12	G 3/8"	38,0	21,5	48,0	31,0	12,0	22	17	24	EW-DKOS-12-G 3/8"-wd-SC
630	12	G 1/2"	38,0	21,5	49,0	31,0	14,0	27	17	24	EW-DKOS-12-G 1/2"-wd-SC
630	14	G 1/2"	40,0	22,0	54,0	35,0	14,0	27	19	27	EW-DKOS-14-G 1/2"-wd-SC
630	16	G 1/2"	43,0	24,5	55,0	36,5	14,0	27	24	30	EW-DKOS-16-G 1/2"-wd-SC
420	20	G 3/4"	48,0	26,5	65,0	44,5	16,0	32	27	36	EW-DKOS-20-G 3/4"-wd-SC
420	25	G 1"	54,0	30,0	73,0	50,0	18,0	41	36	46	EW-DKOS-25-G 1"-wd-SC
420	30	G 1 1/4"	62,0	35,5	78,5	55,0	20,0	50	41	50	EW-DKOS-30-G 1 1/4"-wd-SC
420	38	G 1 1/2"	72,0	41,0	89,0	63,0	22,0	55	50	60	EW-DKOS-38-G 1 1/2"-wd-SC

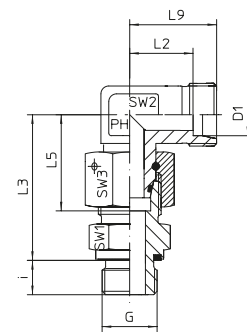
# EW - EINSTELLBARE - WINKEL - VERSCHRAUBUNGEN

## EW - ADJUSTABLE - ELBOWS



EDELSTAHL / STAINLESS STEEL  
VERBINDUNGSTECHNIK  
FLUID CONNECTORS

Einstellbare Winkel-Verschraubungen mit Dichtkegel und O-Ring FPM  
Rohrseitig Schneidringanschluss  
Einschraubgewinde:  
Whitworth-Rohrgewinde - Zylindrisch  
wd = Abdichtung durch Profildichtung - FPM



With Taper and O-ring - FPM  
Cutting Ring Connection at the Tube Connection side  
Thread: BSP - Parallel  
wd = Sealing by an Elastomer Profiled Ring - FPM

### Reihe / Series L

Druck Pressure	Rohr A.D. Tube O.D.	Gewinde Thread	Ca. Maße Approx. Dimensions								Bestellzeichen Order-Code
			L2	L3	L5	L9	i	SW1	SW2	SW3	
PN	D1	G	L2	L3	L5	L9	i	SW1	SW2	SW3	
500	6	G 1/8"	12,0	34,5	26,0	19,0	8,0	14	12	14	EW-DKOL-06-G 1/8"-wd-OMD
500	8	G 1/4"	14,0	37,5	27,5	21,0	12,0	17	12	17	EW-DKOL-08-G 1/4"-wd-OMD
500	10	G 1/4"	15,0	40,0	29,0	22,0	12,0	19	14	19	EW-DKOL-10-G 1/4"-wd-OMD
400	12	G 1/2"	17,0	42,0	29,5	24,0	12,0	19	17	22	EW-DKOL-12-G 1/2"-wd-OMD
400	12	G 1/4"	17,0	42,0	29,5	24,0	12,0	22	17	22	EW-DKOL-12-G 1/4"-wd-OMD
400	12	G 3/8"	17,0	43,0	29,5	24,0	14,0	27	17	22	EW-DKOL-12-G 3/8"-wd-OMD
400	15	G 1/2"	21,0	46,0	32,5	28,0	14,0	27	19	27	EW-DKOL-15-G 1/2"-wd-OMD
400	18	G 1/2"	23,5	50,0	35,5	31,0	14,0	27	24	32	EW-DKOL-18-G 1/2"-wd-OMD
250	22	G 3/4"	27,5	55,0	38,5	35,0	16,0	32	27	36	EW-DKOL-22-G 3/4"-wd-OMD
250	28	G 1"	30,5	59,0	41,5	38,0	18,0	41	36	41	EW-DKOL-28-G 1"-wd-OMD
250	35	G 1 1/4"	34,5	68,5	51,0	45,0	20,0	50	41	50	EW-DKOL-35-G 1 1/4"-wd-OMD
250	42	G 1 1/2"	40,0	75,0	56,0	51,0	22,0	55	50	60	EW-DKOL-42-G 1 1/2"-wd-OMD

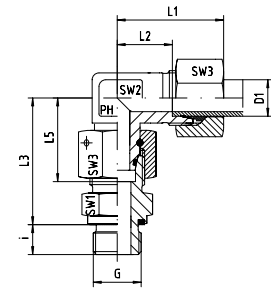
### Reihe / Series S

Druck Pressure	Rohr A.D. Tube O.D.	Gewinde Thread	Ca. Maße Approx. Dimensions								Bestellzeichen Order-Code
			L2	L3	L5	L9	i	SW1	SW2	SW3	
PN	D1	G	L2	L3	L5	L9	i	SW1	SW2	SW3	
800	6	G 1/4"	16,0	40,0	27,0	23,0	12,0	19	12	17	EW-DKOS-06-G 1/4"-wd-OMD
800	8	G 1/4"	17,0	42,5	27,5	24,0	12,0	19	14	19	EW-DKOS-08-G 1/4"-wd-OMD
800	10	G 3/8"	17,5	45,0	30,0	25,0	12,0	22	17	22	EW-DKOS-10-G 3/8"-wd-OMD
630	12	G 1/2"	21,5	48,0	31,0	29,0	12,0	22	17	24	EW-DKOS-12-G 1/2"-wd-OMD
630	12	G 3/8"	21,5	49,0	31,0	29,0	14,0	27	17	24	EW-DKOS-12-G 3/8"-wd-OMD
630	14	G 1/2"	22,0	54,0	35,0	30,0	14,0	27	19	27	EW-DKOS-14-G 1/2"-wd-OMD
630	16	G 1/2"	24,5	55,0	36,5	33,0	14,0	27	24	30	EW-DKOS-16-G 1/2"-wd-OMD
420	20	G 3/4"	26,5	65,0	44,5	37,0	16,0	32	27	36	EW-DKOS-20-G 3/4"-wd-OMD
420	25	G 1"	30,0	73,0	50,0	42,0	18,0	41	36	46	EW-DKOS-25-G 1"-wd-OMD
420	30	G 1 1/4"	35,5	78,5	55,0	49,0	20,0	50	41	50	EW-DKOS-30-G 1 1/4"-wd-OMD
420	38	G 1 1/2"	41,0	89,0	63,0	57,0	22,0	55	50	60	EW-DKOS-38-G 1 1/2"-wd-OMD



Einstellbare Winkel-Verschraubungen mit Dichtkegel und O-Ring FPM  
Rohrseitig Schneidringanschluss  
Einschraubgewinde:  
Metrisches Feingewinde - Zylindrisch  
wd = Abdichtung durch Profildichtung - FPM

With Taper and O-ring - FPM  
Cutting Ring Connection at the Tube Connection side  
Thread: Metric - Parallel  
wd = Sealing by an Elastomer Profiled Ring - FPM



Reihe / Series L

Druck Pressure	Rohr A.D. Tube O.D.	Gewinde Thread	Ca. Maße Approx. Dimensions								Bestellzeichen Order-Code
PN	D1	G	L1	L2	L3	L5	i	SW1	SW2	SW3	
500	6	M 10 x 1	27,0	12,0	34,5	26,0	8,0	14	12	14	EW-DKOL-06-M 10x1-wd
500	8	M 12 x 1,5	29,0	14,0	37,5	27,5	12,0	17	12	17	EW-DKOL-08-M 12x1,5-wd
500	10	M 14 x 1,5	30,0	15,0	40,0	29,0	12,0	19	14	19	EW-DKOL-10-M 14x1,5-wd
400	12	M 16 x 1,5	32,0	17,0	42,0	29,5	12,0	22	17	22	EW-DKOL-12-M 16x1,5-wd
400	15	M 18 x 1,5	36,0	21,0	46,0	32,5	12,0	24	19	27	EW-DKOL-15-M 18x1,5-wd
400	18	M 22 x 1,5	40,0	23,5	50,0	35,5	14,0	27	24	32	EW-DKOL-18-M 22x1,5-wd
250	22	M 26 x 1,5	44,0	27,5	55,0	38,5	16,0	32	27	36	EW-DKOL-22-M 26x1,5-wd
250	28	M 33 x 2	47,0	30,5	59,0	41,5	18,0	41	36	41	EW-DKOL-28-M 33x2-wd
250	35	M 42 x 2	56,0	34,5	68,5	51,0	20,0	50	41	50	EW-DKOL-35-M 42x2-wd
250	42	M 48 x 2	63,0	40,0	75,0	56,0	22,0	55	50	60	EW-DKOL-42-M 48x2-wd

Reihe / Series S

Druck Pressure	Rohr A.D. Tube O.D.	Gewinde Thread	Ca. Maße Approx. Dimensions								Bestellzeichen Order-Code
PN	D1	G	L1	L2	L3	L5	i	SW1	SW2	SW3	
800	6	M 12 x 1,5	31,0	16,0	40,0	27,0	12,0	17	12	17	EW-DKOS-06-M 12x1,5-wd
800	8	M 14 x 1,5	32,0	17,0	42,5	27,5	12,0	19	14	19	EW-DKOS-08-M 14x1,5-wd
800	10	M 16 x 1,5	34,0	17,5	45,0	30,0	12,0	22	17	22	EW-DKOS-10-M 16x1,5-wd
630	12	M 18 x 1,5	38,0	21,5	48,0	31,0	12,0	24	17	24	EW-DKOS-12-M 18x1,5-wd
630	14	M 20 x 1,5	40,0	22,0	54,0	35,0	14,0	27	19	27	EW-DKOS-14-M 20x1,5-wd
630	16	M 22 x 1,5	43,0	24,5	55,0	36,5	14,0	27	24	30	EW-DKOS-16-M 22x1,5-wd
420	20	M 27 x 2	48,0	26,5	65,0	44,5	16,0	32	27	36	EW-DKOS-20-M 27x2-wd
420	25	M 33 x 2	54,0	30,0	73,0	50,0	18,0	41	36	46	EW-DKOS-25-M 33x2-wd
420	30	M 42 x 2	62,0	35,5	78,5	55,0	20,0	50	41	50	EW-DKOS-30-M 42x2-wd
420	38	M 48 x 2	72,0	41,0	89,0	63,0	22,0	55	50	60	EW-DKOS-38-M 48x2-wd

# EW - EINSTELLBARE - WINKEL - VERSCHRAUBUNGEN

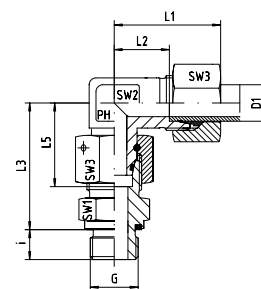
## EW - ADJUSTABLE - ELBOWS



EDELSTAHL / STAINLESS STEEL  
VERBINDUNGSTECHNIK  
FLUID CONNECTORS

Einstellbare Winkel-Verschraubungen mit Dichtkegel und O-Ring FPM  
Rohrseitig Schneidringanschluss  
Einschraubgewinde:  
Metrisches Feingewinde - Zylindrisch  
wd = Abdichtung durch Profildichtung - FPM

With Taper and O-ring - FPM  
Cutting Ring Connection at the Tube Connection side  
Thread: Metric - Parallel  
wd = Sealing by an Elastomer Profiled Ring - FPM



### Reihe / Series L

Druck Pressure	Rohr A.D. Tube O.D.	Gewinde Thread	Ca. Maße Approx. Dimensions								Bestellzeichen Order-Code
PN	D1	G	L1	L2	L3	L5	i	SW1	SW2	SW3	
500	6	M 10 x 1	27,0	12,0	34,5	26,0	8,0	14	12	14	EW-DKOL-06-M 10x1-wd-SC
500	8	M 12 x 1,5	29,0	14,0	37,5	27,5	12,0	17	12	17	EW-DKOL-08-M 12x1,5-wd-SC
500	10	M 14 x 1,5	30,0	15,0	40,0	29,0	12,0	19	14	19	EW-DKOL-10-M 14x1,5-wd-SC
400	12	M 16 x 1,5	32,0	17,0	42,0	29,5	12,0	22	17	22	EW-DKOL-12-M 16x1,5-wd-SC
400	15	M 18 x 1,5	36,0	21,0	46,0	32,5	12,0	24	19	27	EW-DKOL-15-M 18x1,5-wd-SC
400	18	M 22 x 1,5	40,0	23,5	50,0	35,5	14,0	27	24	32	EW-DKOL-18-M 22x1,5-wd-SC
250	22	M 26 x 1,5	44,0	27,5	55,0	38,5	16,0	32	27	36	EW-DKOL-22-M 26x1,5-wd-SC
250	28	M 33 x 2	47,0	30,5	59,0	41,5	18,0	41	36	41	EW-DKOL-28-M 33x2-wd-SC
250	35	M 42 x 2	56,0	34,5	68,5	51,0	20,0	50	41	50	EW-DKOL-35-M 42x2-wd-SC
250	42	M 48 x 2	63,0	40,0	75,0	56,0	22,0	55	50	60	EW-DKOL-42-M 48x2-wd-SC

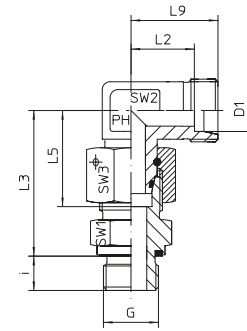
### Reihe / Series S

Druck Pressure	Rohr A.D. Tube O.D.	Gewinde Thread	Ca. Maße Approx. Dimensions								Bestellzeichen Order-Code
PN	D1	G	L1	L2	L3	L5	i	SW1	SW2	SW3	
800	6	M 12 x 1,5	31,0	16,0	40,0	27,0	12,0	17	12	17	EW-DKOS-06-M 12x1,5-wd-SC
800	8	M 14 x 1,5	32,0	17,0	42,5	27,5	12,0	19	14	19	EW-DKOS-08-M 14x1,5-wd-SC
800	10	M 16 x 1,5	34,0	17,5	45,0	30,0	12,0	22	17	22	EW-DKOS-10-M 16x1,5-wd-SC
630	12	M 18 x 1,5	38,0	21,5	48,0	31,0	12,0	24	17	24	EW-DKOS-12-M 18x1,5-wd-SC
630	14	M 20 x 1,5	40,0	22,0	54,0	35,0	14,0	27	19	27	EW-DKOS-14-M 20x1,5-wd-SC
630	16	M 22 x 1,5	43,0	24,5	55,0	36,5	14,0	27	24	30	EW-DKOS-16-M 22x1,5-wd-SC
420	20	M 27 x 2	48,0	26,5	65,0	44,5	16,0	32	27	36	EW-DKOS-20-M 27x2-wd-SC
420	25	M 33 x 2	54,0	30,0	73,0	50,0	18,0	41	36	46	EW-DKOS-25-M 33x2-wd-SC
420	30	M 42 x 2	62,0	35,5	78,5	55,0	20,0	50	41	50	EW-DKOS-30-M 42x2-wd-SC
420	38	M 48 x 2	72,0	41,0	89,0	63,0	22,0	55	50	60	EW-DKOS-38-M 48x2-wd-SC



Einstellbare Winkel-Verschraubungen mit Dichtkegel und O-Ring FPM  
Rohrseitig Schneidringanschluss  
Einschraubgewinde:  
Metrisches Feingewinde - Zylindrisch  
wd = Abdichtung durch Profildichtung - FPM

With Taper and O-ring - FPM  
Cutting Ring Connection at the Tube Connection side  
Thread: Metric - Parallel  
wd = Sealing by an Elastomer Profiled Ring - FPM



Reihe / Series L

Druck Pressure	Rohr A.D. Tube O.D.	Gewinde Thread	Ca. Maße Approx. Dimensions								Bestellzeichen Order-Code
			L2	L3	L5	L9	i	SW1	SW2	SW3	
PN	D1	G	L2	L3	L5	L9	i	SW1	SW2	SW3	
500	6	M 10 x 1	12,0	34,5	26,0	19,0	8,0	14	12	14	EW-DKOL-06-M 10x1-wd-OMD
500	8	M 12 x 1,5	14,0	37,5	27,5	21,0	12,0	17	12	17	EW-DKOL-08-M 12x1,5-wd-OMD
500	10	M 14 x 1,5	15,0	40,0	29,0	22,0	12,0	19	14	19	EW-DKOL-10-M 14x1,5-wd-OMD
400	12	M 16 x 1,5	17,0	42,0	29,5	24,0	12,0	22	17	22	EW-DKOL-12-M 16x1,5-wd-OMD
400	15	M 18 x 1,5	21,0	46,0	32,5	28,0	12,0	24	19	27	EW-DKOL-15-M 18x1,5-wd-OMD
400	18	M 22 x 1,5	23,5	50,0	35,5	31,0	14,0	27	24	32	EW-DKOL-18-M 22x1,5-wd-OMD
250	22	M 26 x 1,5	27,5	55,0	38,5	35,0	16,0	32	27	36	EW-DKOL-22-M 26x1,5-wd-OMD
250	28	M 33 x 2	30,5	59,0	41,5	38,0	18,0	41	36	41	EW-DKOL-28-M 33x2-wd-OMD
250	35	M 42 x 2	34,5	68,5	51,0	45,0	20,0	50	41	50	EW-DKOL-35-M 42x2-wd-OMD
250	42	M 48 x 2	40,0	75,0	56,0	51,0	22,0	55	50	60	EW-DKOL-42-M 48x2-wd-OMD

Reihe / Series S

Druck Pressure	Rohr A.D. Tube O.D.	Gewinde Thread	Ca. Maße Approx. Dimensions								Bestellzeichen Order-Code
			L2	L3	L5	L9	i	SW1	SW2	SW3	
PN	D1	G	L2	L3	L5	L9	i	SW1	SW2	SW3	
800	6	M 12 x 1,5	16,0	40,0	27,0	23,0	12,0	17	12	17	EW-DKOS-06-M 12x1,5-wd-OMD
800	8	M 14 x 1,5	17,0	42,5	27,5	24,0	12,0	19	14	19	EW-DKOS-08-M 14x1,5-wd-OMD
800	10	M 16 x 1,5	17,5	45,0	30,0	25,0	12,0	22	17	22	EW-DKOS-10-M 16x1,5-wd-OMD
630	12	M 18 x 1,5	21,5	48,0	31,0	29,0	12,0	24	17	24	EW-DKOS-12-M 18x1,5-wd-OMD
630	14	M 20 x 1,5	22,0	54,0	35,0	30,0	14,0	27	19	27	EW-DKOS-14-M 20x1,5-wd-OMD
630	16	M 22 x 1,5	24,5	55,0	36,5	33,0	14,0	27	24	30	EW-DKOS-16-M 22x1,5-wd-OMD
420	20	M 27 x 2	26,5	65,0	44,5	37,0	16,0	32	27	36	EW-DKOS-20-M 27x2-wd-OMD
420	25	M 33 x 2	30,0	73,0	50,0	42,0	18,0	41	36	46	EW-DKOS-25-M 33x2-wd-OMD
420	30	M 42 x 2	35,5	78,5	55,0	49,0	20,0	50	41	50	EW-DKOS-30-M 42x2-wd-OMD
420	38	M 48 x 2	41,0	89,0	63,0	57,0	22,0	55	50	60	EW-DKOS-38-M 48x2-wd-OMD

# EV - EINSTELLBARE - 45° - WINKEL - VERSCHRAUBUNGEN

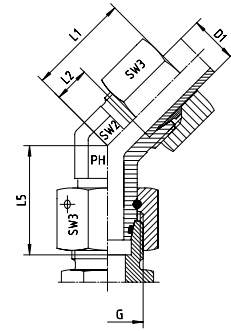
## EV - ADJUSTABLE - 45° - ELBOWS



EDELSTAHL / STAINLESS STEEL  
VERBINDUNGSTECHNIK  
FLUID CONNECTORS

Einstellbare Winkelverschraubungen mit Dichtkegel und O-Ring FPM  
Rohrseitig Schneidringanschluss

With Taper and O-ring - FPM  
Cutting Ring Connection at the Tube Connection side



### Reihe / Series L

Druck Pressure	Rohr A.D. Tube O.D.	Gewinde Thread	Ca. Maße Approx. Dimensions					Bemerkungen Notes	Bestellzeichen Order-Code
PN	D1	G	L1	L2	L5	SW2	SW3		
500	6	M 12 x 1,5	24,0	9,0	26,0	14	14		EV-DKOL-06
500	8	M 14 x 1,5	27,0	12,0	27,5	14	17		EV-DKOL-08
500	10	M 16 x 1,5	27,0	12,0	29,0	19	19		EV-DKOL-10
400	12	M 18 x 1,5	29,0	14,0	29,5	19	22		EV-DKOL-12
400	15	M 22 x 1,5	32,0	17,0	32,5	22	27		EV-DKOL-15
400	18	M 26 x 1,5	33,0	16,5	35,5	27	32		EV-DKOL-18
250	22	M 30 x 2	35,0	18,5	38,5	30	36		EV-DKOL-22
250	28	M 36 x 2	40,0	23,0	41,5	36	41		EV-DKOL-28
250	35	M 45 x 2	48,0	26,5	51,0	50	50		EV-DKOL-35
250	42	M 52 x 2	49,0	26,0	56,0	50	60		EV-DKOL-42

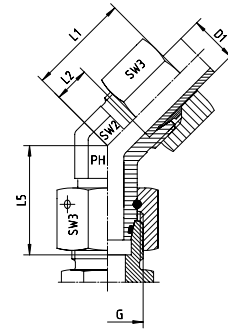
### Reihe / Series S

Druck Pressure	Rohr A.D. Tube O.D.	Gewinde Thread	Ca. Maße Approx. Dimensions					Bemerkungen Notes	Bestellzeichen Order-Code
PN	D1	G	L1	L2	L5	SW2	SW3		
800	6	M 14 x 1,5	24,0	9,0	27,0	14	17		EV-DKOS-06
800	8	M 16 x 1,5	27,0	12,0	27,5	19	19		EV-DKOS-08
800	10	M 18 x 1,5	30,0	13,5	30,0	19	22		EV-DKOS-10
630	12	M 20 x 1,5	33,0	16,5	31,0	22	24		EV-DKOS-12
630	16	M 24 x 1,5	34,0	15,5	36,5	27	30		EV-DKOS-16
420	20	M 30 x 2	38,0	16,0	44,5	30	36		EV-DKOS-20
420	25	M 36 x 2	43,0	18,5	50,0	36	46		EV-DKOS-25
420	30	M 42 x 2	50,0	23,5	55,0	50	50		EV-DKOS-30
420	38	M 52 x 2	52,0	21,0	63,0	50	60		EV-DKOS-38



Einstellbare Winkelverschraubungen mit Dichtkegel  
und O-Ring FPM  
Rohrseitig Schneidringanschluss

With Taper and O-Ring - FPM  
Cutting Ring Connection at the Tube Connection side



Reihe / Series L

Druck Pressure	Rohr A.D. Tube O.D.	Gewinde Thread	Ca. Maße Approx. Dimensions					Bemerkungen Notes	Bestellzeichen Order-Code
PN	D1	G	L1	L2	L5	SW2	SW3		
500	6	M 12 x 1,5	24,0	9,0	26,0	14	14		EV-DKOL-06-SC
500	8	M 14 x 1,5	27,0	12,0	27,5	14	17		EV-DKOL-08-SC
500	10	M 16 x 1,5	27,0	12,0	29,0	19	19		EV-DKOL-10-SC
400	12	M 18 x 1,5	29,0	14,0	29,5	19	22		EV-DKOL-12-SC
400	15	M 22 x 1,5	32,0	17,0	32,5	22	27		EV-DKOL-15-SC
400	18	M 26 x 1,5	33,0	16,5	35,5	27	32		EV-DKOL-18-SC
250	22	M 30 x 2	35,0	18,5	38,5	30	36		EV-DKOL-22-SC
250	28	M 36 x 2	40,0	23,0	41,5	36	41		EV-DKOL-28-SC
250	35	M 45 x 2	48,0	26,5	51,0	50	50		EV-DKOL-35-SC
250	42	M 52 x 2	49,0	26,0	56,0	50	60		EV-DKOL-42-SC

Reihe / Series S

Druck Pressure	Rohr A.D. Tube O.D.	Gewinde Thread	Ca. Maße Approx. Dimensions					Bemerkungen Notes	Bestellzeichen Order-Code
PN	D1	G	L1	L2	L5	SW2	SW3		
800	6	M 14 x 1,5	24,0	9,0	27,0	14	17		EV-DKOS-06-SC
800	8	M 16 x 1,5	27,0	12,0	27,5	19	19		EV-DKOS-08-SC
800	10	M 18 x 1,5	30,0	13,5	30,0	19	22		EV-DKOS-10-SC
630	12	M 20 x 1,5	33,0	16,5	31,0	22	24		EV-DKOS-12-SC
630	16	M 24 x 1,5	34,0	15,5	36,5	27	30		EV-DKOS-16-SC
420	20	M 30 x 2	38,0	16,0	44,5	30	36		EV-DKOS-20-SC
420	25	M 36 x 2	43,0	18,5	50,0	36	46		EV-DKOS-25-SC
420	30	M 42 x 2	50,0	23,5	55,0	50	50		EV-DKOS-30-SC
420	38	M 52 x 2	52,0	21,0	63,0	50	60		EV-DKOS-38-SC

# EV - EINSTELLBARE - 45° - WINKEL - VERSCHRAUBUNGEN

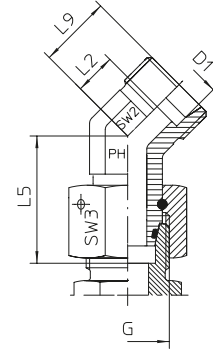
EV - ADJUSTABLE - 45° - ELBOWS



EDELSTAHL / STAINLESS STEEL  
VERBINDUNGSTECHNIK  
FLUID CONNECTORS

Einstellbare Winkelverschraubungen mit Dichtkegel  
und O-Ring FPM  
Rohrseitig Schneidringanschluss

With Taper and O-ring - FPM  
Cutting Ring Connection at the Tube Connection side



## Reihe / Series L

Druck Pressure	Rohr A.D. Tube O.D.	Gewinde Thread	Ca. Maße Approx. Dimensions					Bemerkungen Notes	Bestellzeichen Order-Code
			L2	L5	L9	SW2	SW3		
<b>PN</b>	<b>D1</b>	<b>G</b>	<b>L2</b>	<b>L5</b>	<b>L9</b>	<b>SW2</b>	<b>SW3</b>		
500	6	M 12 x 1,5	9,0	26,0	16,0	14,0	14,0		EV-DKOL-06-OMD
500	8	M 14 x 1,5	12,0	27,5	19,0	14,0	17,0		EV-DKOL-08-OMD
500	10	M 16 x 1,5	12,0	29,0	19,0	19,0	19,0		EV-DKOL-10-OMD
400	12	M 18 x 1,5	14,0	29,5	21,0	19,0	22,0		EV-DKOL-12-OMD
400	15	M 22 x 1,5	17,0	32,5	24,0	22,0	27,0		EV-DKOL-15-OMD
400	18	M 26 x 1,5	16,5	35,5	24,0	27,0	32,0		EV-DKOL-18-OMD
250	22	M 30 x 2	18,5	38,5	26,0	30,0	36,0		EV-DKOL-22-OMD
250	28	M 36 x 2	23,0	41,5	30,5	36,0	41,0		EV-DKOL-28-OMD
250	35	M 45 x 2	26,5	51,0	37,0	50,0	50,0		EV-DKOL-35-OMD
250	42	M 52 x 2	26,0	56,0	37,0	50,0	60,0		EV-DKOL-42-OMD

## Reihe / Series S

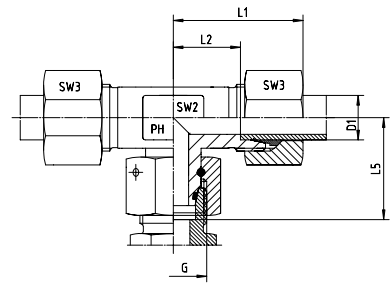
Druck Pressure	Rohr A.D. Tube O.D.	Gewinde Thread	Ca. Maße Approx. Dimensions					Bemerkungen Notes	Bestellzeichen Order-Code
			L2	L5	L9	SW2	SW3		
<b>PN</b>	<b>D1</b>	<b>G</b>	<b>L2</b>	<b>L5</b>	<b>L9</b>	<b>SW2</b>	<b>SW3</b>		
800	6	M 14 x 1,5	9,0	27,0	16,0	14,0	17,0		EV-DKOS-06-OMD
800	8	M 16 x 1,5	12,0	27,5	19,0	19,0	19,0		EV-DKOS-08-OMD
800	10	M 18 x 1,5	13,5	30,0	21,0	19,0	22,0		EV-DKOS-10-OMD
630	12	M 20 x 1,5	16,5	31,0	24,0	22,0	24,0		EV-DKOS-12-OMD
630	16	M 24 x 1,5	15,5	36,5	24,0	27,0	30,0		EV-DKOS-16-OMD
420	20	M 30 x 2	16,0	44,5	26,5	30,0	36,0		EV-DKOS-20-OMD
420	25	M 36 x 2	18,5	50,0	30,5	36,0	46,0		EV-DKOS-25-OMD
420	30	M 42 x 2	23,5	55,0	37,0	50,0	50,0		EV-DKOS-30-OMD
420	38	M 52 x 2	21,0	63,0	37,0	50,0	60,0		EV-DKOS-38-OMD





Einstellbare T-Verschraubungen mit Dichtkegel  
und O-Ring FPM  
Rohrseitig Schneidringanschluss

With Taper and O-ring - FPM  
Cutting Ring Connection at the Tube Connection side



Reihe / Series L

Druck Pressure	Rohr A.D. Tube O.D.	Gewinde Thread	Ca. Maße Approx. Dimensions					Bemerkungen Notes	Bestellzeichen Order-Code
PN	D1	G	L1	L2	L5	SW2	SW3		
500	6	M 12 x 1,5	27,0	12,0	26,0	12	14		ET-DKOL-06
500	8	M 14 x 1,5	29,0	14,0	27,5	12	17		ET-DKOL-08
500	10	M 16 x 1,5	30,0	15,0	29,0	14	19		ET-DKOL-10
400	12	M 18 x 1,5	32,0	17,0	29,5	17	22		ET-DKOL-12
400	15	M 22 x 1,5	36,0	21,0	32,5	19	27		ET-DKOL-15
400	18	M 26 x 1,5	40,0	23,5	35,5	24	32		ET-DKOL-18
250	22	M 30 x 2	44,0	27,5	38,5	27	36		ET-DKOL-22
250	28	M 36 x 2	47,0	30,5	41,5	36	41		ET-DKOL-28
250	35	M 45 x 2	56,0	34,5	51,0	41	50		ET-DKOL-35
250	42	M 52 x 2	63,0	40,0	56,0	50	60		ET-DKOL-42

Reihe / Series S

Druck Pressure	Rohr A.D. Tube O.D.	Gewinde Thread	Ca. Maße Approx. Dimensions					Bemerkungen Notes	Bestellzeichen Order-Code
PN	D1	G	L1	L2	L5	SW2	SW3		
800	6	M 14 x 1,5	31,0	16,0	27,0	12	17		ET-DKOS-06
800	8	M 16 x 1,5	32,0	17,0	27,5	14	19		ET-DKOS-08
800	10	M 18 x 1,5	34,0	17,5	30,0	17	22		ET-DKOS-10
630	12	M 20 x 1,5	38,0	21,5	31,0	17	24		ET-DKOS-12
630	14	M 22 x 1,5	40,0	22,0	35,0	19	27		ET-DKOS-14
630	16	M 24 x 1,5	43,0	24,5	36,5	24	30		ET-DKOS-16
420	20	M 30 x 2	48,0	26,5	44,5	27	36		ET-DKOS-20
420	25	M 36 x 2	54,0	30,0	50,0	36	46		ET-DKOS-25
420	30	M 42 x 2	62,0	35,5	55,0	41	50		ET-DKOS-30
420	38	M 52 x 2	72,0	41,0	63,0	50	60		ET-DKOS-38

# ET - EINSTELLBARE - T- VERSCHRAUBUNGEN

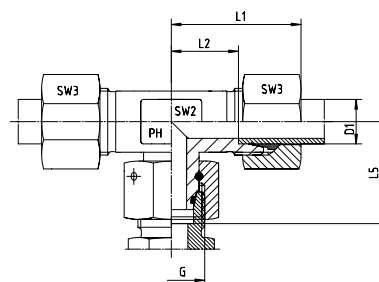
ET - ADJUSTABLE - BRANCH - TEES



EDELSTAHL / STAINLESS STEEL  
VERBINDUNGSTECHNIK  
FLUID CONNECTORS

Einstellbare T-Verschraubungen mit Dichtkegel  
und O-Ring FPM  
Rohrseitig Schneidringanschluss

With Taper and O-ring - FPM  
Cutting Ring Connection at the Tube Connection side



## Reihe / Series L

Druck Pressure	Rohr A.D. Tube O.D.	Gewinde Thread	Ca. Maße Approx. Dimensions					Bemerkungen Notes	Bestellzeichen Order-Code
PN	D1	G	L1	L2	L5	SW2	SW3		
500	6	M 12 x 1,5	27,0	12,0	26,0	12	14		ET-DKOL-06-SC
500	8	M 14 x 1,5	29,0	14,0	27,5	12	17		ET-DKOL-08-SC
500	10	M 16 x 1,5	30,0	15,0	29,0	14	19		ET-DKOL-10-SC
400	12	M 18 x 1,5	32,0	17,0	29,5	17	22		ET-DKOL-12-SC
400	15	M 22 x 1,5	36,0	21,0	32,5	19	27		ET-DKOL-15-SC
400	18	M 26 x 1,5	40,0	23,5	35,5	24	32		ET-DKOL-18-SC
250	22	M 30 x 2	44,0	27,5	38,5	27	36		ET-DKOL-22-SC
250	28	M 36 x 2	47,0	30,5	41,5	36	41		ET-DKOL-28-SC
250	35	M 45 x 2	56,0	34,5	51,0	41	50		ET-DKOL-35-SC
250	42	M 52 x 2	63,0	40,0	56,0	50	60		ET-DKOL-42-SC

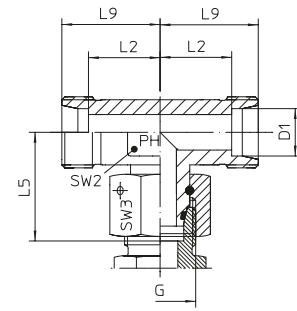
## Reihe / Series S

Druck Pressure	Rohr A.D. Tube O.D.	Gewinde Thread	Ca. Maße Approx. Dimensions					Bemerkungen Notes	Bestellzeichen Order-Code
PN	D1	G	L1	L2	L5	SW2	SW3		
800	6	M 14 x 1,5	31,0	16,0	27,0	12	17		ET-DKOS-06-SC
800	8	M 16 x 1,5	32,0	17,0	27,5	14	19		ET-DKOS-08-SC
800	10	M 18 x 1,5	34,0	17,5	30,0	17	22		ET-DKOS-10-SC
630	12	M 20 x 1,5	38,0	21,5	31,0	17	24		ET-DKOS-12-SC
630	14	M 22 x 1,5	40,0	22,0	35,0	19	27		ET-DKOS-14-SC
630	16	M 24 x 1,5	43,0	24,5	36,5	24	30		ET-DKOS-16-SC
420	20	M 30 x 2	48,0	26,5	44,5	27	36		ET-DKOS-20-SC
420	25	M 36 x 2	54,0	30,0	50,0	36	46		ET-DKOS-25-SC
420	30	M 42 x 2	62,0	35,5	55,0	41	50		ET-DKOS-30-SC
420	38	M 52 x 2	72,0	41,0	63,0	50	60		ET-DKOS-38-SC



Einstellbare T-Verschraubungen mit Dichtkegel  
und O-Ring FPM  
Rohrseitig Schneidringanschluss

With Taper and O-ring - FPM  
Cutting Ring Connection at the Tube Connection side



Reihe / Series L

Druck Pressure	Rohr A.D. Tube O.D.	Gewinde Thread	Ca. Maße Approx. Dimensions					Bemerkungen Notes	Bestellzeichen Order-Code
PN	D1	G	L2	L5	L9	SW2	SW3		
500	6	M 12 x 1,5	12,0	26,0	19,0	12	14		ET-DKOL-06-OMD
500	8	M 14 x 1,5	14,0	27,5	21,0	12	17		ET-DKOL-08-OMD
500	10	M 16 x 1,5	15,0	29,0	22,0	14	19		ET-DKOL-10-OMD
400	12	M 18 x 1,5	17,0	29,5	24,0	17	22		ET-DKOL-12-OMD
400	15	M 22 x 1,5	21,0	32,5	28,0	19	27		ET-DKOL-15-OMD
400	18	M 26 x 1,5	23,5	35,5	31,0	24	32		ET-DKOL-18-OMD
250	22	M 30 x 2	27,5	38,5	35,0	27	36		ET-DKOL-22-OMD
250	28	M 36 x 2	30,5	41,5	38,0	36	41		ET-DKOL-28-OMD
250	35	M 45 x 2	34,5	51,0	45,0	41	50		ET-DKOL-35-OMD
250	42	M 52 x 2	40,0	56,0	51,0	50	60		ET-DKOL-42-OMD

Reihe / Series S

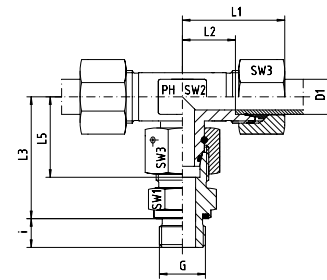
Druck Pressure	Rohr A.D. Tube O.D.	Gewinde Thread	Ca. Maße Approx. Dimensions					Bemerkungen Notes	Bestellzeichen Order-Code
PN	D1	G	L2	L5	L9	SW2	SW3		
800	6	M 14 x 1,5	16,0	27,0	23,0	12	17		ET-DKOS-06-OMD
800	8	M 16 x 1,5	17,0	27,5	24,0	14	19		ET-DKOS-08-OMD
800	10	M 18 x 1,5	17,5	30,0	25,0	17	22		ET-DKOS-10-OMD
630	12	M 20 x 1,5	21,5	31,0	29,0	17	24		ET-DKOS-12-OMD
630	14	M 22 x 1,5	22,0	35,0	30,0	19	27		ET-DKOS-14-OMD
630	16	M 24 x 1,5	24,5	36,5	33,0	24	30		ET-DKOS-16-OMD
420	20	M 30 x 2	26,5	44,5	37,0	27	36		ET-DKOS-20-OMD
420	25	M 36 x 2	30,0	50,0	42,0	36	46		ET-DKOS-25-OMD
420	30	M 42 x 2	35,5	55,0	49,0	41	50		ET-DKOS-30-OMD
420	38	M 52 x 2	41,0	63,0	57,0	50	60		ET-DKOS-38-OMD

# ET - EINSTELLBARE - T- VERSCHRAUBUNGEN

ET - ADJUSTABLE - BRANCH - TEES

Einstellbare T-Verschraubungen mit Dichtkegel und O-Ring FPM  
Rohrseitig Schneidringanschluss  
Einschraubgewinde:  
Whitworth-Rohrgewinde - Zylindrisch  
wd = Abdichtung durch Profildichtung - FPM

With Taper and O-ring - FPM  
Cutting Ring Connection at the Tube Connection side  
Thread: BSP - Parallel  
wd = Sealing by an Elastomer Profiled Ring - FPM



## Reihe / Series L

Druck Pressure	Rohr A.D. Tube O.D.	Gewinde Thread	Ca. Maße Approx. Dimensions								Bestellzeichen Order-Code
PN	D1	G	L1	L2	L3	L5	i	SW1	SW2	SW3	
500	6	G 1/8"	27,0	12,0	34,5	26,0	8,0	14	12	14	ET-DKOL-06-G 1/8"-wd
500	8	G 1/4"	29,0	14,0	37,5	27,5	12,0	17	12	17	ET-DKOL-08-G 1/4"-wd
500	10	G 1/4"	30,0	15,0	40,0	29,0	12,0	19	14	19	ET-DKOL-10-G 1/4"-wd
400	12	G 3/8"	32,0	17,0	42,0	29,5	12,0	22	17	22	ET-DKOL-12-G 3/8"-wd
400	15	G 1/2"	36,0	21,0	46,5	32,5	14,0	27	19	27	ET-DKOL-15-G 1/2"-wd
400	18	G 1/2"	40,0	23,5	50,0	35,5	14,0	27	24	32	ET-DKOL-18-G 1/2"-wd
250	22	G 3/4"	44,0	27,5	65,0	38,5	16,0	32	27	36	ET-DKOL-22-G 3/4"-wd
250	28	G 1"	47,0	30,5	59,0	41,5	18,0	41	36	41	ET-DKOL-28-G 1"-wd
250	35	G 1 1/4"	56,0	34,5	68,5	51,0	20,0	50	41	50	ET-DKOL-35-G 1 1/4"-wd
250	42	G 1 1/2"	63,0	40,0	75,0	56,0	22,0	55	50	60	ET-DKOL-42-G 1 1/2"-wd

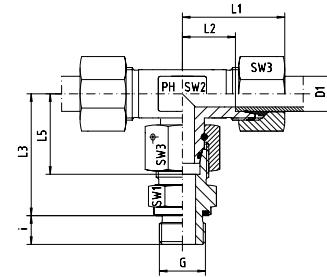
## Reihe / Series S

Druck Pressure	Rohr A.D. Tube O.D.	Gewinde Thread	Ca. Maße Approx. Dimensions								Bestellzeichen Order-Code
PN	D1	G	L1	L2	L3	L5	i	SW1	SW2	SW3	
800	6	G 1/4"	31,0	16,0	40,0	27,0	12,0	19	12	17	ET-DKOS-06-G 1/4"-wd
800	8	G 1/4"	32,0	17,0	42,5	27,5	12,0	19	14	19	ET-DKOS-08-G 1/4"-wd
800	10	G 3/8"	34,0	17,5	45,0	30,0	12,0	22	17	22	ET-DKOS-10-G 3/8"-wd
630	12	G 3/8"	38,0	21,5	48,0	31,0	12,0	22	17	24	ET-DKOS-12-G 3/8"-wd
630	14	G 1/2"	40,0	22,0	54,0	35,0	14,0	27	19	27	ET-DKOS-14-G 1/2"-wd
630	16	G 1/2"	43,0	24,5	55,0	36,5	14,0	27	24	30	ET-DKOS-16-G 1/2"-wd
420	20	G 3/4"	48,0	26,5	65,0	44,5	16,0	32	27	36	ET-DKOS-20-G 3/4"-wd
420	25	G 1"	54,0	30,0	73,0	50,0	18,0	41	36	46	ET-DKOS-25-G 1"-wd
420	30	G 1 1/4"	62,0	35,5	78,5	55,0	20,0	50	41	50	ET-DKOS-30-G 1 1/4"-wd
420	38	G 1 1/2"	72,0	41,0	89,0	63,0	22,0	55	50	60	ET-DKOS-38-G 1 1/2"-wd



Einstellbare T-Verschraubungen mit Dichtkegel und O-Ring FPM  
Rohrseitig Schneidringanschluss  
Einschraubgewinde:  
Whitworth-Rohrgewinde - Zylindrisch  
wd = Abdichtung durch Profildichtung - FPM

With Taper and O-ring - FPM  
Cutting Ring Connection at the Tube Connection side  
Thread: BSP - Parallel  
wd = Sealing by an Elastomer Profiled Ring - FPM



Reihe / Series L

Druck Pressure	Rohr A.D. Tube O.D.	Gewinde Thread	Ca. Maße Approx. Dimensions								Bestellzeichen Order-Code
PN	D1	G	L1	L2	L3	L5	i	SW1	SW2	SW3	
500	6	G 1/8"	27,0	12,0	34,5	26,0	8,0	14	12	14	ET-DKOL-06-G 1/8"-wd-SC
500	8	G 1/4"	29,0	14,0	37,5	27,5	12,0	17	12	17	ET-DKOL-08-G 1/4"-wd-SC
500	10	G 1/4"	30,0	15,0	40,0	29,0	12,0	19	14	19	ET-DKOL-10-G 1/4"-wd-SC
400	12	G 3/8"	32,0	17,0	42,0	29,5	12,0	22	17	22	ET-DKOL-12-G 3/8"-wd-SC
400	15	G 1/2"	36,0	21,0	46,5	32,5	14,0	27	19	27	ET-DKOL-15-G 1/2"-wd-SC
400	18	G 1/2"	40,0	23,5	50,0	35,5	14,0	27	24	32	ET-DKOL-18-G 1/2"-wd-SC
250	22	G 3/4"	44,0	27,5	65,0	38,5	16,0	32	27	36	ET-DKOL-22-G 3/4"-wd-SC
250	28	G 1"	47,0	30,5	59,0	41,5	18,0	41	36	41	ET-DKOL-28-G 1"-wd-SC
250	35	G 1 1/4"	56,0	34,5	68,5	51,0	20,0	50	41	50	ET-DKOL-35-G 1 1/4"-wd-SC
250	42	G 1 1/2"	63,0	40,0	75,0	56,0	22,0	55	50	60	ET-DKOL-42-G 1 1/2"-wd-SC

Reihe / Series S

Druck Pressure	Rohr A.D. Tube O.D.	Gewinde Thread	Ca. Maße Approx. Dimensions								Bestellzeichen Order-Code
PN	D1	G	L1	L2	L3	L5	i	SW1	SW2	SW3	
800	6	G 1/4"	31,0	16,0	40,0	27,0	12,0	19	12	17	ET-DKOS-06-G 1/4"-wd-SC
800	8	G 1/4"	32,0	17,0	42,5	27,5	12,0	19	14	19	ET-DKOS-08-G 1/4"-wd-SC
800	10	G 3/8"	34,0	17,5	45,0	30,0	12,0	22	17	22	ET-DKOS-10-G 3/8"-wd-SC
630	12	G 3/8"	38,0	21,5	48,0	31,0	12,0	22	17	24	ET-DKOS-12-G 3/8"-wd-SC
630	14	G 1/2"	40,0	22,0	54,0	35,0	14,0	27	19	27	ET-DKOS-14-G 1/2"-wd-SC
630	16	G 1/2"	43,0	24,5	55,0	36,5	14,0	27	24	30	ET-DKOS-16-G 1/2"-wd-SC
420	20	G 3/4"	48,0	26,5	65,0	44,5	16,0	32	27	36	ET-DKOS-20-G 3/4"-wd-SC
420	25	G 1"	54,0	30,0	73,0	50,0	18,0	41	36	46	ET-DKOS-25-G 1"-wd-SC
420	30	G 1 1/4"	62,0	35,5	78,5	55,0	20,0	50	41	50	ET-DKOS-30-G 1 1/4"-wd-SC
420	38	G 1 1/2"	72,0	41,0	89,0	63,0	22,0	55	50	60	ET-DKOS-38-G 1 1/2"-wd-SC

# ET - EINSTELLBARE - T- VERSCHRAUBUNGEN

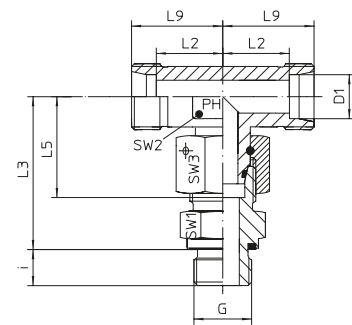
ET - ADJUSTABLE - BRANCH - TEES



EDELSTAHL / STAINLESS STEEL  
VERBINDUNGSTECHNIK  
FLUID CONNECTORS

Einstellbare T-Verschraubungen mit Dichtkegel und O-Ring FPM  
Rohrseitig Schneidringanschluss  
Einschraubgewinde:  
Whitworth-Rohrgewinde - Zylindrisch  
wd = Abdichtung durch Profildichtung - FPM

With Taper and O-ring - FPM  
Cutting Ring Connection at the Tube Connection side  
Thread: BSP - Parallel  
wd = Sealing by an Elastomer Profiled Ring - FPM



## Reihe / Series L

Druck Pressure	Rohr A.D. Tube O.D.	Gewinde Thread	Ca. Maße Approx. Dimensions								Bestellzeichen Order-Code
			L2	L3	L5	L9	i	SW1	SW2	SW3	
PN	D1	G	L2	L3	L5	L9	i	SW1	SW2	SW3	
500	6	G 1/8"	12,0	34,5	26,0	19,0	8,0	14	12	14	ET-DKOL-06-G 1/8"-wd-OMD
500	8	G 1/4"	14,0	37,5	27,5	21,0	12,0	17	12	17	ET-DKOL-08-G 1/4"-wd-OMD
500	10	G 1/4"	15,0	40,0	29,0	22,0	12,0	19	14	19	ET-DKOL-10-G 1/4"-wd-OMD
400	12	G 3/8"	17,0	42,0	29,5	24,0	12,0	22	17	22	ET-DKOL-12-G 3/8"-wd-OMD
400	15	G 1/2"	21,0	46,5	32,5	28,0	14,0	27	19	27	ET-DKOL-15-G 1/2"-wd-OMD
400	18	G 1/2"	23,5	50,0	35,5	31,0	14,0	27	24	32	ET-DKOL-18-G 1/2"-wd-OMD
250	22	G 3/4"	27,5	65,0	38,5	35,0	16,0	32	27	36	ET-DKOL-22-G 3/4"-wd-OMD
250	28	G 1"	30,5	59,0	41,5	38,0	18,0	41	36	41	ET-DKOL-28-G 1"-wd-OMD
250	35	G 1 1/4"	34,5	68,5	51,0	45,0	20,0	50	41	50	ET-DKOL-35-G 1 1/4"-wd-OMD
250	42	G 1 1/2"	40,0	75,0	56,0	51,0	22,0	55	50	60	ET-DKOL-42-G 1 1/2"-wd-OMD

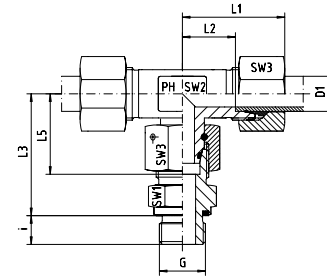
## Reihe / Series S

Druck Pressure	Rohr A.D. Tube O.D.	Gewinde Thread	Ca. Maße Approx. Dimensions								Bestellzeichen Order-Code
			L2	L3	L5	L9	i	SW1	SW2	SW3	
PN	D1	G	L2	L3	L5	L9	i	SW1	SW2	SW3	
800	6	G 1/4"	16,0	40,0	27,0	23,0	12,0	19	12	17	ET-DKOS-06-G 1/4"-wd-OMD
800	8	G 1/4"	17,0	42,5	27,5	24,0	12,0	19	14	19	ET-DKOS-08-G 1/4"-wd-OMD
800	10	G 3/8"	17,5	45,0	30,0	25,0	12,0	22	17	22	ET-DKOS-10-G 3/8"-wd-OMD
630	12	G 3/8"	21,5	48,0	31,0	29,0	12,0	22	17	24	ET-DKOS-12-G 3/8"-wd-OMD
630	14	G 1/2"	22,0	54,0	35,0	30,0	14,0	27	19	27	ET-DKOS-14-G 1/2"-wd-OMD
630	16	G 1/2"	24,5	55,0	36,5	33,0	14,0	27	24	30	ET-DKOS-16-G 1/2"-wd-OMD
420	20	G 3/4"	26,5	65,0	44,5	37,0	16,0	32	27	36	ET-DKOS-20-G 3/4"-wd-OMD
420	25	G 1"	30,0	73,0	50,0	42,0	18,0	41	36	46	ET-DKOS-25-G 1"-wd-OMD
420	30	G 1 1/4"	35,5	78,5	55,0	49,0	20,0	50	41	50	ET-DKOS-30-G 1 1/4"-wd-OMD
420	38	G 1 1/2"	41,0	89,0	63,0	57,0	22,0	55	50	60	ET-DKOS-38-G 1 1/2"-wd-OMD



Einstellbare T-Verschraubungen mit Dichtkegel und O-Ring FPM  
Rohrseitig Schneidringanschluss  
Einschraubgewinde:  
Metrisches Feingewinde - Zylindrisch  
wd = Abdichtung durch Profildichtung - FPM

With Taper and O-ring - FPM  
Cutting Ring Connection at the Tube Connection side  
Thread: Metric - Parallel  
wd = Sealing by an Elastomer Profiled Ring - FPM



Reihe / Series L

Druck Pressure	Rohr A.D. Tube O.D.	Gewinde Thread	Ca. Maße Approx. Dimensions								Bestellzeichen Order-Code
PN	D1	G	L1	L2	L3	L5	i	SW1	SW2	SW3	
500	6	M 10 x 1	27,0	12,0	34,5	26,0	8,0	14	12	14	ET-DKOL-06-M 10x1-wd
500	8	M 12 x 1,5	29,0	14,0	37,5	27,5	12,0	17	12	17	ET-DKOL-08-M 12x1,5-wd
500	10	M 14 x 1,5	30,0	15,0	40,0	29,0	12,0	19	14	19	ET-DKOL-10-M 14x1,5-wd
400	12	M 16 x 1,5	32,0	17,0	42,0	29,5	12,0	22	17	22	ET-DKOL-12-M 16x1,5-wd
400	15	M 18 x 1,5	36,0	21,0	46,0	32,5	12,0	24	19	27	ET-DKOL-15-M 18x1,5-wd
400	18	M 22 x 1,5	40,0	23,5	50,0	35,5	14,0	27	24	32	ET-DKOL-18-M 22x1,5-wd
250	22	M 26 x 1,5	44,0	27,5	55,0	38,5	16,0	32	27	36	ET-DKOL-22-M 26x1,5-wd
250	28	M 33 x 2	47,0	30,5	59,0	41,5	18,0	41	36	41	ET-DKOL-28-M 33x2-wd
250	35	M 42 x 2	56,0	34,5	68,5	51,0	20,0	50	41	50	ET-DKOL-35-M 42x2-wd
250	42	M 48 x 2	63,0	40,0	75,0	56,0	22,0	55	50	60	ET-DKOL-42-M 48x2-wd

Reihe / Series S

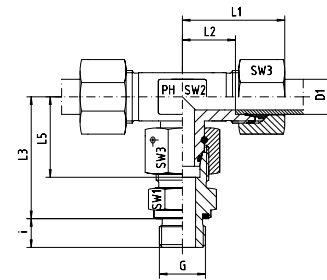
Druck Pressure	Rohr A.D. Tube O.D.	Gewinde Thread	Ca. Maße Approx. Dimensions								Bestellzeichen Order-Code
PN	D1	G	L1	L2	L3	L5	i	SW1	SW2	SW3	
800	6	M 12 x 1,5	31,0	16,0	40,0	27,0	12,0	17	12	17	ET-DKOS-06-M 12x1,5-wd
800	8	M 14 x 1,5	32,0	17,0	42,5	27,5	12,0	19	14	19	ET-DKOS-08-M 14x1,5-wd
800	10	M 16 x 1,5	34,0	17,5	45,0	30,0	12,0	22	17	22	ET-DKOS-10-M 16x1,5-wd
630	12	M 18 x 1,5	38,0	21,5	48,0	31,0	12,0	24	17	24	ET-DKOS-12-M 18x1,5-wd
630	14	M 20 x 1,5	40,0	22,0	54,0	35,0	14,0	27	19	27	ET-DKOS-14-M 20x1,5-wd
630	16	M 22 x 1,5	43,0	24,5	55,0	36,5	14,0	27	24	30	ET-DKOS-16-M 22x1,5-wd
420	20	M 27 x 2	48,0	26,5	65,0	44,5	16,0	32	27	36	ET-DKOS-20-M 27x2-wd
420	25	M 33 x 2	54,0	30,0	73,0	50,0	18,0	41	36	46	ET-DKOS-25-M 33x2-wd
420	30	M 42 x 2	62,0	35,5	78,5	55,0	20,0	50	41	50	ET-DKOS-30-M 42x2-wd
420	38	M 48 x 2	72,0	41,0	89,0	63,0	22,0	55	50	60	ET-DKOS-38-M 48x2-wd

# ET - EINSTELLBARE - T- VERSCHRAUBUNGEN

ET - ADJUSTABLE - BRANCH - TEES

Einstellbare T-Verschraubungen mit Dichtkegel und O-Ring FPM  
Rohrseitig Schneidringanschluss  
Einschraubgewinde:  
Metrisches Feingewinde - Zylindrisch  
wd = Abdichtung durch Profildichtung - FPM

With Taper and O-ring - FPM  
Cutting Ring Connection at the Tube Connection side  
Thread: Metric - Parallel  
wd = Sealing by an Elastomer Profiled Ring - FPM



## Reihe / Series L

Druck Pressure	Rohr A.D. Tube O.D.	Gewinde Thread	Ca. Maße Approx. Dimensions								Bestellzeichen Order-Code
			PN	D1	G	L1	L2	L3	L5	i	
500	6	M 10 x 1	27,0	12,0	34,5	26,0	8,0	14	12	14	ET-DKOL-06-M 10x1-wd-SC
500	8	M 12 x 1,5	29,0	14,0	37,5	27,5	12,0	17	12	17	ET-DKOL-08-M 12x1,5-wd-SC
500	10	M 14 x 1,5	30,0	15,0	40,0	29,0	12,0	19	14	19	ET-DKOL-10-M 14x1,5-wd-SC
400	12	M 16 x 1,5	32,0	17,0	42,0	29,5	12,0	22	17	22	ET-DKOL-12-M 16x1,5-wd-SC
400	15	M 18 x 1,5	36,0	21,0	46,0	32,5	12,0	24	19	27	ET-DKOL-15-M 18x1,5-wd-SC
400	18	M 22 x 1,5	40,0	23,5	50,0	35,5	14,0	27	24	32	ET-DKOL-18-M 22x1,5-wd-SC
250	22	M 26 x 1,5	44,0	27,5	55,0	38,5	16,0	32	27	36	ET-DKOL-22-M 26x1,5-wd-SC
250	28	M 33 x 2	47,0	30,5	59,0	41,5	18,0	41	36	41	ET-DKOL-28-M 33x2-wd-SC
250	35	M 42 x 2	56,0	34,5	68,5	51,0	20,0	50	41	50	ET-DKOL-35-M 42x2-wd-SC
250	42	M 48 x 2	63,0	40,0	75,0	56,0	22,0	55	50	60	ET-DKOL-42-M 48x2-wd-SC

## Reihe / Series S

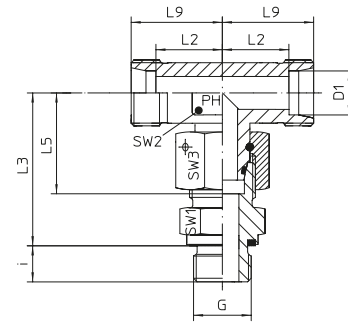
Druck Pressure	Rohr A.D. Tube O.D.	Gewinde Thread	Ca. Maße Approx. Dimensions								Bestellzeichen Order-Code
			PN	D1	G	L1	L2	L3	L5	i	
800	6	M 12 x 1,5	31,0	16,0	40,0	27,0	12,0	17	12	17	ET-DKOS-06-M 12x1,5-wd-SC
800	8	M 14 x 1,5	32,0	17,0	42,5	27,5	12,0	19	14	19	ET-DKOS-08-M 14x1,5-wd-SC
800	10	M 16 x 1,5	34,0	17,5	45,0	30,0	12,0	22	17	22	ET-DKOS-10-M 16x1,5-wd-SC
630	12	M 18 x 1,5	38,0	21,5	48,0	31,0	12,0	24	17	24	ET-DKOS-12-M 18x1,5-wd-SC
630	14	M 20 x 1,5	40,0	22,0	54,0	35,0	14,0	27	19	27	ET-DKOS-14-M 20x1,5-wd-SC
630	16	M 22 x 1,5	43,0	24,5	55,0	36,5	14,0	27	24	30	ET-DKOS-16-M 22x1,5-wd-SC
420	20	M 27 x 2	48,0	26,5	65,0	44,5	16,0	32	27	36	ET-DKOS-20-M 27x2-wd-SC
420	25	M 33 x 2	54,0	30,0	73,0	50,0	18,0	41	36	46	ET-DKOS-25-M 33x2-wd-SC
420	30	M 42 x 2	62,0	35,5	78,5	55,0	20,0	50	41	50	ET-DKOS-30-M 42x2-wd-SC
420	38	M 48 x 2	72,0	41,0	89,0	63,0	22,0	55	50	60	ET-DKOS-38-M 48x2-wd-SC





Einstellbare T-Verschraubungen mit Dichtkegel  
und O-Ring FPM  
Rohrseitig Schneidringanschluss  
Einschraubgewinde:  
Metrisches Feingewinde - Zylindrisch  
wd = Abdichtung durch Profildichtung - FPM

With Taper and O-ring - FPM  
Cutting Ring Connection at the Tube Connection side  
Thread: Metric - Parallel  
wd = Sealing by an Elastomer Profiled Ring - FPM



Reihe / Series L

Druck Pressure	Rohr A.D. Tube O.D.	Gewinde Thread									Bestellzeichen Order-Code
PN	D1	G	L2	L3	L5	L9	i	SW1	SW2	SW3	
500	6	M 10 x 1	12,0	34,5	26,0	19,0	8,0	14	12	14	ET-DKOL-06-M 10x1-wd-OMD
500	8	M 12 x 1,5	14,0	37,5	27,5	21,0	12,0	17	12	17	ET-DKOL-08-M 12x1,5-wd-OMD
500	10	M 14 x 1,5	15,0	40,0	29,0	22,0	12,0	19	14	19	ET-DKOL-10-M 14x1,5-wd-OMD
400	12	M 16 x 1,5	17,0	42,0	29,5	24,0	12,0	22	17	22	ET-DKOL-12-M 16x1,5-wd-OMD
400	15	M 18 x 1,5	21,0	46,0	32,5	28,0	12,0	24	19	27	ET-DKOL-15-M 18x1,5-wd-OMD
400	18	M 22 x 1,5	23,5	50,0	35,5	31,0	14,0	27	24	32	ET-DKOL-18-M 22x1,5-wd-OMD
250	22	M 26 x 1,5	27,5	55,0	38,5	35,0	16,0	32	27	36	ET-DKOL-22-M 26x1,5-wd-OMD
250	28	M 33 x 2	30,5	59,0	41,5	38,0	18,0	41	36	41	ET-DKOL-28-M 33x2-wd-OMD
250	35	M 42 x 2	34,5	68,5	51,0	45,0	20,0	50	41	50	ET-DKOL-35-M 42x2-wd-OMD
250	42	M 48 x 2	40,0	75,0	56,0	51,0	22,0	55	50	60	ET-DKOL-42-M 48x2-wd-OMD

Reihe / Series S

Druck Pressure	Rohr A.D. Tube O.D.	Gewinde Thread	Ca. Maße Approx. Dimensions								Bestellzeichen Order-Code
PN	D1	G	L2	L3	L5	L9	i	SW1	SW2	SW3	
800	6	M 12 x 1,5	16,0	40,0	27,0	23,0	12,0	17	12	17	ET-DKOS-06-M 12x1,5-wd-OMD
800	8	M 14 x 1,5	17,0	42,5	27,5	24,0	12,0	19	14	19	ET-DKOS-08-M 14x1,5-wd-OMD
800	10	M 16 x 1,5	17,5	45,0	30,0	25,0	12,0	22	17	22	ET-DKOS-10-M 16x1,5-wd-OMD
630	12	M 18 x 1,5	21,5	48,0	31,0	29,0	12,0	24	17	24	ET-DKOS-12-M 18x1,5-wd-OMD
630	14	M 20 x 1,5	22,0	54,0	35,0	30,0	14,0	27	19	27	ET-DKOS-14-M 20x1,5-wd-OMD
630	16	M 22 x 1,5	24,5	55,0	36,5	33,0	14,0	27	24	30	ET-DKOS-16-M 22x1,5-wd-OMD
420	20	M 27 x 2	26,5	65,0	44,5	37,0	16,0	32	27	36	ET-DKOS-20-M 27x2-wd-OMD
420	25	M 33 x 2	30,0	73,0	50,0	42,0	18,0	41	36	46	ET-DKOS-25-M 33x2-wd-OMD
420	30	M 42 x 2	35,5	78,5	55,0	49,0	20,0	50	41	50	ET-DKOS-30-M 42x2-wd-OMD
420	38	M 48 x 2	41,0	89,0	63,0	57,0	22,0	55	50	60	ET-DKOS-38-M 48x2-wd-OMD

# EL - EINSTELLBARE - L- VERSCHRAUBUNGEN

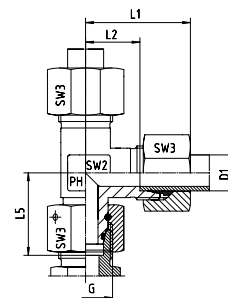
EL - ADJUSTABLE - RUN - TEES



EDELSTAHL / STAINLESS STEEL  
VERBINDUNGSTECHNIK  
FLUID CONNECTORS

Einstellbare L-Verschraubungen mit Dichtkegel  
und O-Ring FPM  
Rohrseitig Schneidringanschluss

With Taper and O-Ring - FPM  
Cutting Ring Connection at the Tube Connection side



## Reihe / Series L

Druck Pressure	Rohr A.D. Tube O.D.	Gewinde Thread	Ca. Maße Approx. Dimensions					Bemerkungen Notes	Bestellzeichen Order-Code
PN	D1	G	L1	L2	L5	SW2	SW3		
500	6	M 12 x 1,5	27,0	12,0	26,0	12	14		EL-DKOL-06
500	8	M 14 x 1,5	29,0	14,0	27,5	12	17		EL-DKOL-08
500	10	M 16 x 1,5	30,0	15,0	29,0	14	19		EL-DKOL-10
400	12	M 18 x 1,5	32,0	17,0	29,5	17	22		EL-DKOL-12
400	15	M 22 x 1,5	36,0	21,0	32,5	19	27		EL-DKOL-15
400	18	M 26 x 1,5	40,0	23,5	35,5	24	32		EL-DKOL-18
250	22	M 30 x 2	44,0	27,5	38,5	27	36		EL-DKOL-22
250	28	M 36 x 2	47,0	30,5	41,5	36	41		EL-DKOL-28
250	35	M 45 x 2	56,0	34,5	51,0	41	50		EL-DKOL-35
250	42	M 52 x 2	63,0	40,0	56,0	50	60		EL-DKOL-42

## Reihe / Series S

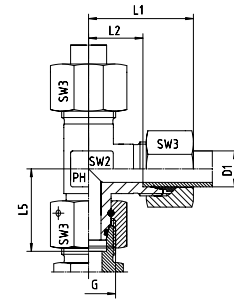
Druck Pressure	Rohr A.D. Tube O.D.	Gewinde Thread	Ca. Maße Approx. Dimensions					Bemerkungen Notes	Bestellzeichen Order-Code
PN	D1	G	L1	L2	L5	SW2	SW3		
800	6	M 14 x 1,5	31,0	16,0	27,0	12	17		EL-DKOS-06
800	8	M 16 x 1,5	32,0	17,0	27,5	14	19		EL-DKOS-08
800	10	M 18 x 1,5	34,0	17,5	30,0	17	22		EL-DKOS-10
630	12	M 20 x 1,5	38,0	21,5	31,0	17	24		EL-DKOS-12
630	14	M 22 x 1,5	40,0	22,0	35,0	19	27		EL-DKOS-14
630	16	M 24 x 1,5	43,0	24,5	36,5	24	30		EL-DKOS-16
420	20	M 30 x 2	48,0	26,5	44,5	27	36		EL-DKOS-20
420	25	M 36 x 2	54,0	30,0	50,0	36	46		EL-DKOS-25
420	30	M 42 x 2	62,0	35,5	55,0	41	50		EL-DKOS-30
420	38	M 52 x 2	72,0	41,0	63,0	50	60		EL-DKOS-38





Einstellbare L-Verschraubungen mit Dichtkegel  
und O-Ring FPM  
Rohrseitig Schneidringanschluss

With Taper and O-Ring - FPM  
Cutting Ring Connection at the Tube Connection side



Reihe / Series L

Druck Pressure	Rohr A.D. Tube O.D.	Gewinde Thread	Ca. Maße Approx. Dimensions					Bemerkungen Notes	Bestellzeichen Order-Code
PN	D1	G	L1	L2	L5	SW2	SW3		
500	6	M 12 x 1,5	27,0	12,0	26,0	12	14		EL-DKOL-06-SC
500	8	M 14 x 1,5	29,0	14,0	27,5	12	17		EL-DKOL-08-SC
500	10	M 16 x 1,5	30,0	15,0	29,0	14	19		EL-DKOL-10-SC
400	12	M 18 x 1,5	32,0	17,0	29,5	17	22		EL-DKOL-12-SC
400	15	M 22 x 1,5	36,0	21,0	32,5	19	27		EL-DKOL-15-SC
400	18	M 26 x 1,5	40,0	23,5	35,5	24	32		EL-DKOL-18-SC
250	22	M 30 x 2	44,0	27,5	38,5	27	36		EL-DKOL-22-SC
250	28	M 36 x 2	47,0	30,5	41,5	36	41		EL-DKOL-28-SC
250	35	M 45 x 2	56,0	34,5	51,0	41	50		EL-DKOL-35-SC
250	42	M 52 x 2	63,0	40,0	56,0	50	60		EL-DKOL-42-SC

Reihe / Series S

Druck Pressure	Rohr A.D. Tube O.D.	Gewinde Thread	Ca. Maße Approx. Dimensions					Bemerkungen Notes	Bestellzeichen Order-Code
PN	D1	G	L1	L2	L5	SW2	SW3		
800	6	M 14 x 1,5	31,0	16,0	27,0	12	17		EL-DKOS-06-SC
800	8	M 16 x 1,5	32,0	17,0	27,5	14	19		EL-DKOS-08-SC
800	10	M 18 x 1,5	34,0	17,5	30,0	17	22		EL-DKOS-10-SC
630	12	M 20 x 1,5	38,0	21,5	31,0	17	24		EL-DKOS-12-SC
630	14	M 22 x 1,5	40,0	22,0	35,0	19	27		EL-DKOS-14-SC
630	16	M 24 x 1,5	43,0	24,5	36,5	24	30		EL-DKOS-16-SC
420	20	M 30 x 2	48,0	26,5	44,5	27	36		EL-DKOS-20-SC
420	25	M 36 x 2	54,0	30,0	50,0	36	46		EL-DKOS-25-SC
420	30	M 42 x 2	62,0	35,5	55,0	41	50		EL-DKOS-30-SC
420	38	M 52 x 2	72,0	41,0	63,0	50	60		EL-DKOS-38-SC

# EL - EINSTELLBARE - L- VERSCHRAUBUNGEN

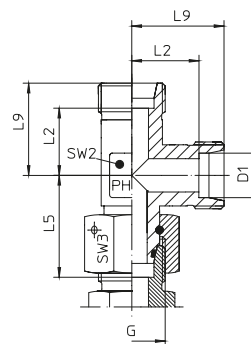
EL - ADJUSTABLE - RUN - TEES



EDELSTAHL / STAINLESS STEEL  
VERBINDUNGSTECHNIK  
FLUID CONNECTORS

Einstellbare L-Verschraubungen mit Dichtkegel  
und O-Ring FPM  
Rohrseitig Schneidringanschluss

With Taper and O-Ring - FPM  
Cutting Ring Connection at the Tube Connection side



## Reihe / Series L

Druck Pressure	Rohr A.D. Tube O.D.	Gewinde Thread	Ca. Maße Approx. Dimensions					Bemerkungen Notes	Bestellzeichen Order-Code
PN	D1	G	L2	L5	L9	SW2	SW3		
500	6	M 12 x 1,5	12,0	26,0	19,0	12	14		EL-DKOL-06-OMD
500	8	M 14 x 1,5	14,0	27,5	21,0	12	17		EL-DKOL-08-OMD
500	10	M 16 x 1,5	15,0	29,0	22,0	14	19		EL-DKOL-10-OMD
400	12	M 18 x 1,5	17,0	29,5	24,0	17	22		EL-DKOL-12-OMD
400	15	M 22 x 1,5	21,0	32,5	28,0	19	27		EL-DKOL-15-OMD
400	18	M 26 x 1,5	23,5	35,5	31,0	24	32		EL-DKOL-18-OMD
250	22	M 30 x 2	27,5	38,5	35,0	27	36		EL-DKOL-22-OMD
250	28	M 36 x 2	30,5	41,5	38,0	36	41		EL-DKOL-28-OMD
250	35	M 45 x 2	34,5	51,0	45,0	41	50		EL-DKOL-35-OMD
250	42	M 52 x 2	40,0	56,0	51,0	50	60		EL-DKOL-42-OMD

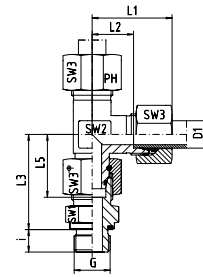
## Reihe / Series S

Druck Pressure	Rohr A.D. Tube O.D.	Gewinde Thread	Ca. Maße Approx. Dimensions					Bemerkungen Notes	Bestellzeichen Order-Code
PN	D1	G	L2	L5	L9	SW2	SW3		
800	6	M 14 x 1,5	16,0	27,0	23,0	12	17		EL-DKOS-06-OMD
800	8	M 16 x 1,5	17,0	27,5	24,0	14	19		EL-DKOS-08-OMD
800	10	M 18 x 1,5	17,5	30,0	25,0	17	22		EL-DKOS-10-OMD
630	12	M 20 x 1,5	21,5	31,0	29,0	17	24		EL-DKOS-12-OMD
630	14	M 22 x 1,5	22,0	35,0	30,0	19	27		EL-DKOS-14-OMD
630	16	M 24 x 1,5	24,5	36,5	33,0	24	30		EL-DKOS-16-OMD
420	20	M 30 x 2	26,5	44,5	37,0	27	36		EL-DKOS-20-OMD
420	25	M 36 x 2	30,0	50,0	42,0	36	46		EL-DKOS-25-OMD
420	30	M 42 x 2	35,5	55,0	49,0	41	50		EL-DKOS-30-OMD
420	38	M 52 x 2	41,0	63,0	57,0	50	60		EL-DKOS-38-OMD



Einstellbare L-Verschraubungen mit Dichtkegel  
und O-Ring FPM  
Rohrseitig Schneidringanschluss  
Einschraubgewinde:  
Whitworth-Rohrgewinde - Zylindrisch  
wd = Abdichtung durch Profildichtung - FPM

With Taper and O-Ring - FPM  
Cutting Ring Connection at the Tube Connection side  
Thread: BSP - Parallel  
wd = Sealing by an Elastomer Profiled Ring - FPM



Reihe / Series L

Druck Pressure	Rohr A.D. Tube O.D.	Gewinde Thread	Ca. Maße Approx. Dimensions								Bestellzeichen Order-Code
			L1	L2	L3	L5	i	SW1	SW2	SW3	
PN	D1	G	L1	L2	L3	L5	i	SW1	SW2	SW3	
500	6	G 1/8"	27,0	12,0	34,5	26,0	8,0	14	12	14	EL-DKOL-06-G 1/8"-wd
500	8	G 1/4"	29,0	14,0	37,5	27,5	12,0	19	12	17	EL-DKOL-08-G 1/4"-wd
500	10	G 1/4"	30,0	15,0	40,0	29,0	12,0	19	14	19	EL-DKOL-10-G 1/4"-wd
400	12	G 3/8"	32,0	17,0	42,0	29,5	12,0	22	17	22	EL-DKOL-12-G 3/8"-wd
400	15	G 1/2"	36,0	21,0	46,5	32,5	14,0	27	19	27	EL-DKOL-15-G 1/2"-wd
400	18	G 1/2"	40,0	23,5	50,0	35,5	14,0	27	24	32	EL-DKOL-18-G 1/2"-wd
250	22	G 3/4"	44,0	27,5	55,0	38,5	16,0	32	27	36	EL-DKOL-22-G 3/4"-wd
250	28	G 1"	47,0	30,5	59,0	41,5	18,0	41	36	41	EL-DKOL-28-G 1"-wd
250	35	G 1 1/4"	56,0	34,5	68,5	51,0	20,0	50	41	50	EL-DKOL-35-G 1 1/4"-wd
250	42	G 1 1/2"	63,0	40,0	75,0	56,0	22,0	55	50	60	EL-DKOL-42-G 1 1/2"-wd

Reihe / Series S

Druck Pressure	Rohr A.D. Tube O.D.	Gewinde Thread	Ca. Maße Approx. Dimensions								Bestellzeichen Order-Code
			L1	L2	L3	L5	i	SW1	SW2	SW3	
PN	D1	G	L1	L2	L3	L5	i	SW1	SW2	SW3	
800	6	G 1/4"	31,0	16,0	40,0	27,0	12,0	19	12	17	EL-DKOS-06-G 1/4"-wd
800	8	G 1/4"	32,0	17,0	42,5	27,5	12,0	19	14	19	EL-DKOS-08-G 1/4"-wd
800	10	G 3/8"	34,0	17,5	45,0	30,0	12,0	22	17	22	EL-DKOS-10-G 3/8"-wd
630	12	G 3/8"	38,0	21,5	48,0	31,0	12,0	22	17	24	EL-DKOS-12-G 3/8"-wd
630	14	G 1/2"	40,0	22,0	54,0	35,0	14,0	27	19	27	EL-DKOS-14-G 1/2"-wd
630	16	G 1/2"	43,0	24,5	55,0	36,5	14,0	27	24	30	EL-DKOS-16-G 1/2"-wd
420	20	G 3/4"	48,0	26,5	65,0	44,5	16,0	32	27	36	EL-DKOS-20-G 3/4"-wd
420	25	G 1"	54,0	30,0	73,0	50,0	18,0	41	36	46	EL-DKOS-25-G 1"-wd
420	30	G 1 1/4"	62,0	35,5	78,5	55,0	20,0	50	41	50	EL-DKOS-30-G 1 1/4"-wd
420	38	G 1 1/2"	72,0	41,0	89,0	63,0	22,0	55	50	60	EL-DKOS-38-G 1 1/2"-wd

# EL - EINSTELLBARE - L- VERSCHRAUBUNGEN

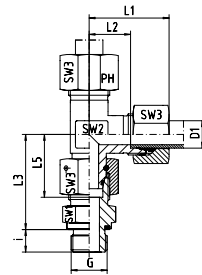
EL - ADJUSTABLE - RUN - TEES



EDELSTAHL / STAINLESS STEEL  
VERBINDUNGSTECHNIK  
FLUID CONNECTORS

Einstellbare L-Verschraubungen mit Dichtkegel und O-Ring FPM  
Rohrseitig Schneidringanschluss  
Einschraubgewinde:  
Whitworth-Rohrgewinde - Zylindrisch  
wd = Abdichtung durch Profildichtung - FPM

With Taper and O-Ring - FPM  
Cutting Ring Connection at the Tube Connection side  
Thread: BSP - Parallel  
wd = Sealing by an Elastomer Profiled Ring - FPM



## Reihe / Series L

Druck Pressure	Rohr A.D. Tube O.D.	Gewinde Thread	Ca. Maße Approx. Dimensions								Bestellzeichen Order-Code
			L1	L2	L3	L5	i	SW1	SW2	SW3	
PN	D1	G	L1	L2	L3	L5	i	SW1	SW2	SW3	
500	6	G 1/8"	27,0	12,0	34,5	26,0	8,0	14	12	14	EL-DKOL-06-G 1/8"-wd-SC
500	8	G 1/4"	29,0	14,0	37,5	27,5	12,0	19	12	17	EL-DKOL-08-G 1/4"-wd-SC
500	10	G 1/4"	30,0	15,0	40,0	29,0	12,0	19	14	19	EL-DKOL-10-G 1/4"-wd-SC
400	12	G 3/8"	32,0	17,0	42,0	29,5	12,0	22	17	22	EL-DKOL-12-G 3/8"-wd-SC
400	15	G 1/2"	36,0	21,0	46,5	32,5	14,0	27	19	27	EL-DKOL-15-G 1/2"-wd-SC
400	18	G 1/2"	40,0	23,5	50,0	35,5	14,0	27	24	32	EL-DKOL-18-G 1/2"-wd-SC
250	22	G 3/4"	44,0	27,5	55,0	38,5	16,0	32	27	36	EL-DKOL-22-G 3/4"-wd-SC
250	28	G 1"	47,0	30,5	59,0	41,5	18,0	41	36	41	EL-DKOL-28-G 1"-wd-SC
250	35	G 1 1/4"	56,0	34,5	68,5	51,0	20,0	50	41	50	EL-DKOL-35-G 1 1/4"-wd-SC
250	42	G 1 1/2"	63,0	40,0	75,0	56,0	22,0	55	50	60	EL-DKOL-42-G 1 1/2"-wd-SC

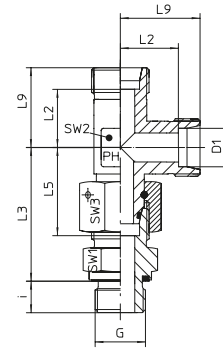
## Reihe / Series S

Druck Pressure	Rohr A.D. Tube O.D.	Gewinde Thread	Ca. Maße Approx. Dimensions								Bestellzeichen Order-Code
			L1	L2	L3	L5	i	SW1	SW2	SW3	
PN	D1	G	L1	L2	L3	L5	i	SW1	SW2	SW3	
800	6	G 1/4"	31,0	16,0	40,0	27,0	12,0	19	12	17	EL-DKOS-06-G 1/4"-wd-SC
800	8	G 1/4"	32,0	17,0	42,5	27,5	12,0	19	14	19	EL-DKOS-08-G 1/4"-wd-SC
800	10	G 3/8"	34,0	17,5	45,0	30,0	12,0	22	17	22	EL-DKOS-10-G 3/8"-wd-SC
630	12	G 3/8"	38,0	21,5	48,0	31,0	12,0	22	17	24	EL-DKOS-12-G 3/8"-wd-SC
630	14	G 1/2"	40,0	22,0	54,0	35,0	14,0	27	19	27	EL-DKOS-14-G 1/2"-wd-SC
630	16	G 1/2"	43,0	24,5	55,0	36,5	14,0	27	24	30	EL-DKOS-16-G 1/2"-wd-SC
420	20	G 3/4"	48,0	26,5	65,0	44,5	16,0	32	27	36	EL-DKOS-20-G 3/4"-wd-SC
420	25	G 1"	54,0	30,0	73,0	50,0	18,0	41	36	46	EL-DKOS-25-G 1"-wd-SC
420	30	G 1 1/4"	62,0	35,5	78,5	55,0	20,0	50	41	50	EL-DKOS-30-G 1 1/4"-wd-SC
420	38	G 1 1/2"	72,0	41,0	89,0	63,0	22,0	55	50	60	EL-DKOS-38-G 1 1/2"-wd-SC



Einstellbare L-Verschraubungen mit Dichtkegel  
und O-Ring FPM  
Rohrseitig Schneidringanschluss  
Einschraubgewinde:  
Whitworth-Rohrgewinde - Zylindrisch  
wd = Abdichtung durch Profildichtung - FPM

With Taper and O-Ring - FPM  
Cutting Ring Connection at the Tube Connection side  
Thread: BSP - Parallel  
wd = Sealing by an Elastomer Profiled Ring - FPM



Reihe / Series L

Druck Pressure	Rohr A.D. Tube O.D.	Gewinde Thread	Ca. Maße Approx. Dimensions								Bestellzeichen Order-Code
			L2	L3	L5	L9	i	SW1	SW2	SW3	
PN	D1	G	L2	L3	L5	L9	i	SW1	SW2	SW3	
500	6	G 1/8"	12,0	34,5	26,0	19,0	8,0	14	12	14	EL-DKOL-06-G 1/8"-wd-OMD
500	8	G 1/4"	14,0	37,5	27,5	21,0	12,0	19	12	17	EL-DKOL-08-G 1/4"-wd-OMD
500	10	G 1/4"	15,0	40,0	29,0	22,0	12,0	19	14	19	EL-DKOL-10-G 1/4"-wd-OMD
400	12	G 3/8"	17,0	42,0	29,5	24,0	12,0	22	17	22	EL-DKOL-12-G 3/8"-wd-OMD
400	15	G 1/2"	21,0	46,5	32,5	28,0	14,0	27	19	27	EL-DKOL-15-G 1/2"-wd-OMD
400	18	G 1/2"	23,5	50,0	35,5	31,0	14,0	27	24	32	EL-DKOL-18-G 1/2"-wd-OMD
250	22	G 3/4"	27,5	55,0	38,5	35,0	16,0	32	27	36	EL-DKOL-22-G 3/4"-wd-OMD
250	28	G 1"	30,5	59,0	41,5	38,0	18,0	41	36	41	EL-DKOL-28-G 1"-wd-OMD
250	35	G 1 1/4"	34,5	68,5	51,0	45,0	20,0	50	41	50	EL-DKOL-35-G 1 1/4"-wd-OMD
250	42	G 1 1/2"	40,0	75,0	56,0	51,0	22,0	55	50	60	EL-DKOL-42-G 1 1/2"-wd-OMD

Reihe / Series S

Druck Pressure	Rohr A.D. Tube O.D.	Gewinde Thread	Ca. Maße Approx. Dimensions								Bestellzeichen Order-Code
			L2	L3	L5	L9	i	SW1	SW2	SW3	
PN	D1	G	L2	L3	L5	L9	i	SW1	SW2	SW3	
800	6	G 1/4"	16,0	40,0	27,0	23,0	12,0	19	12	17	EL-DKOS-06-G 1/4"-wd-OMD
800	8	G 1/4"	17,0	42,5	27,5	24,0	12,0	19	14	19	EL-DKOS-08-G 1/4"-wd-OMD
800	10	G 3/8"	17,5	45,0	30,0	25,0	12,0	22	17	22	EL-DKOS-10-G 3/8"-wd-OMD
630	12	G 3/8"	21,5	48,0	31,0	29,0	12,0	22	17	24	EL-DKOS-12-G 3/8"-wd-OMD
630	14	G 1/2"	22,0	54,0	35,0	30,0	14,0	27	19	27	EL-DKOS-14-G 1/2"-wd-OMD
630	16	G 1/2"	24,5	55,0	36,5	33,0	14,0	27	24	30	EL-DKOS-16-G 1/2"-wd-OMD
420	20	G 3/4"	26,5	65,0	44,5	37,0	16,0	32	27	36	EL-DKOS-20-G 3/4"-wd-OMD
420	25	G 1"	30,0	73,0	50,0	42,0	18,0	41	36	46	EL-DKOS-25-G 1"-wd-OMD
420	30	G 1 1/4"	35,5	78,5	55,0	49,0	20,0	50	41	50	EL-DKOS-30-G 1 1/4"-wd-OMD
420	38	G 1 1/2"	41,0	89,0	63,0	57,0	22,0	55	50	60	EL-DKOS-38-G 1 1/2"-wd-OMD

# EL - EINSTELLBARE - L- VERSCHRAUBUNGEN

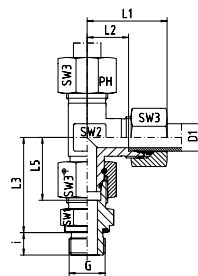
EL - ADJUSTABLE - RUN - TEES



EDELSTAHL / STAINLESS STEEL  
VERBINDUNGSTECHNIK  
FLUID CONNECTORS

Einstellbare L-Verschraubungen mit Dichtkegel  
und O-Ring FPM  
Rohrseitig Schneidringanschluss  
Einschraubgewinde:  
Metrisches Feingewinde - Zylindrisch  
wd = Abdichtung durch Profildichtung - FPM

With Taper and O-Ring - FPM  
Cutting Ring Connection at the Tube Connection side  
Thread: Metric - Parallel  
wd = Sealing by an Elastomer Profiled Ring - FPM



## Reihe / Series L

Druck Pressure	Rohr A.D. Tube O.D.	Gewinde Thread	Ca. Maße Approx. Dimensions								Bestellzeichen Order-Code
PN	D1	G	L1	L2	L3	L5	i	SW1	SW2	SW3	
500	6	M 10 x 1	27,0	12,0	34,5	26,0	8,0	14	12	14	EL-DKOL-06-M 10x1-wd
500	8	M 12 x 1,5	29,0	14,0	37,5	27,5	12,0	17	12	17	EL-DKOL-08-M 12x1,5-wd
500	10	M 14 x 1,5	30,0	15,0	40,0	29,0	12,0	19	14	19	EL-DKOL-10-M 14x1,5-wd
400	12	M 16 x 1,5	32,0	17,0	42,0	29,5	12,0	22	17	22	EL-DKOL-12-M 16x1,5-wd
400	15	M 18 x 1,5	36,0	21,0	46,0	32,5	12,0	24	19	27	EL-DKOL-15-M 18x1,5-wd
400	18	M 22 x 1,5	40,0	23,5	50,0	35,5	14,0	27	24	32	EL-DKOL-18-M 22x1,5-wd
250	22	M 26 x 1,5	44,0	27,5	55,0	38,5	16,0	32	27	36	EL-DKOL-22-M 26x1,5-wd
250	28	M 33 x 2	47,0	30,5	59,0	41,5	18,0	41	36	41	EL-DKOL-28-M 33x3-wd
250	35	M 42 x 2	56,0	34,5	68,5	51,0	20,0	50	41	50	EL-DKOL-35-M 42x2-wd
250	42	M 48 x 2	63,0	40,0	75,0	56,0	22,0	55	50	60	EL-DKOL-42-M 48x2-wd

## Reihe / Series S

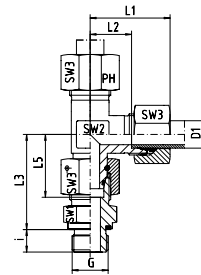
Druck Pressure	Rohr A.D. Tube O.D.	Gewinde Thread	Ca. Maße Approx. Dimensions								Bestellzeichen Order-Code
PN	D1	G	L1	L2	L3	L5	i	SW1	SW2	SW3	
800	6	M 12 x 1,5	31,0	16,0	40,0	27,0	12,0	17	12	17	EL-DKOS-06-M 12x1,5-wd
800	8	M 14 x 1,5	32,0	17,0	42,5	27,5	12,0	19	14	19	EL-DKOS-08-M 14x1,5-wd
800	10	M 16 x 1,5	34,0	17,5	45,0	30,0	12,0	22	17	22	EL-DKOS-10-M 16x1,5-wd
630	12	M 18 x 1,5	38,0	21,5	48,0	31,0	12,0	24	17	24	EL-DKOS-12-M 18x1,5-wd
630	14	M 20 x 1,5	40,0	22,0	54,0	35,0	14,0	27	19	27	EL-DKOS-14-M 20x1,5-wd
630	16	M 22 x 1,5	43,0	24,5	55,0	36,5	14,0	27	24	30	EL-DKOS-16-M 22x1,5-wd
420	20	M 27 x 2	48,0	26,5	65,0	44,5	16,0	32	27	36	EL-DKOS-20-M 27x2-wd
420	25	M 33 x 2	54,0	30,0	73,0	50,0	18,0	41	36	46	EL-DKOS-25-M 33x2-wd
420	30	M 42 x 2	62,0	35,5	78,5	55,0	20,0	50	41	50	EL-DKOS-30-M 42x2-wd
420	38	M 48 x 2	72,0	41,0	89,0	63,0	22,0	55	50	60	EL-DKOS-38-M 48x2-wd





Einstellbare L-Verschraubungen mit Dichtkegel  
und O-Ring FPM  
Rohrseitig Schneidringanschluss  
Einschraubgewinde:  
Metrisches Feingewinde - Zylindrisch  
wd = Abdichtung durch Profildichtung - FPM

With Taper and O-Ring - FPM  
Cutting Ring Connection at the Tube Connection side  
Thread: Metric - Parallel  
wd = Sealing by an Elastomer Profiled Ring - FPM



Reihe / Series L

Druck Pressure	Rohr A.D. Tube O.D.	Gewinde Thread	Ca. Maße Approx. Dimensions								Bestellzeichen Order-Code
PN	D1	G	L1	L2	L3	L5	i	SW1	SW2	SW3	
500	6	M 10 x 1	27,0	12,0	34,5	26,0	8,0	14	12	14	EL-DKOL-06-M 10x1-wd-SC
500	8	M 12 x 1,5	29,0	14,0	37,5	27,5	12,0	17	12	17	EL-DKOL-08-M 12x1,5-wd-SC
500	10	M 14 x 1,5	30,0	15,0	40,0	29,0	12,0	19	14	19	EL-DKOL-10-M 14x1,5-wd-SC
400	12	M 16 x 1,5	32,0	17,0	42,0	29,5	12,0	22	17	22	EL-DKOL-12-M 16x1,5-wd-SC
400	15	M 18 x 1,5	36,0	21,0	46,0	32,5	12,0	24	19	27	EL-DKOL-15-M 18x1,5-wd-SC
400	18	M 22 x 1,5	40,0	23,5	50,0	35,5	14,0	27	24	32	EL-DKOL-18-M 22x1,5-wd-SC
250	22	M 26 x 1,5	44,0	27,5	55,0	38,5	16,0	32	27	36	EL-DKOL-22-M 26x1,5-wd-SC
250	28	M 33 x 2	47,0	30,5	59,0	41,5	18,0	41	36	41	EL-DKOL-28-M 33x2-wd-SC
250	35	M 42 x 2	56,0	34,5	68,5	51,0	20,0	50	41	50	EL-DKOL-35-M 42x2-wd-SC
250	42	M 48 x 2	63,0	40,0	75,0	56,0	22,0	55	50	60	EL-DKOL-42-M 48x2-wd-SC

Reihe / Series S

Druck Pressure	Rohr A.D. Tube O.D.	Gewinde Thread	Ca. Maße Approx. Dimensions								Bestellzeichen Order-Code
PN	D1	G	L1	L2	L3	L5	i	SW1	SW2	SW3	
800	6	M 12 x 1,5	31,0	16,0	40,0	27,0	12,0	17	12	17	EL-DKOS-06-M 12x1,5-wd-SC
800	8	M 14 x 1,5	32,0	17,0	42,5	27,5	12,0	19	14	19	EL-DKOS-08-M 14x1,5-wd-SC
800	10	M 16 x 1,5	34,0	17,5	45,0	30,0	12,0	22	17	22	EL-DKOS-10-M 16x1,5-wd-SC
630	12	M 18 x 1,5	38,0	21,5	48,0	31,0	12,0	24	17	24	EL-DKOS-12-M 18x1,5-wd-SC
630	14	M 20 x 1,5	40,0	22,0	54,0	35,0	14,0	27	19	27	EL-DKOS-14-M 20x1,5-wd-SC
630	16	M 22 x 1,5	43,0	24,5	55,0	36,5	14,0	27	24	30	EL-DKOS-16-M 22x1,5-wd-SC
420	20	M 27 x 2	48,0	26,5	65,0	44,5	16,0	32	27	36	EL-DKOS-20-M 27x2-wd-SC
420	25	M 33 x 2	54,0	30,0	73,0	50,0	18,0	41	36	46	EL-DKOS-25-M 33x2-wd-SC
420	30	M 42 x 2	62,0	35,5	78,5	55,0	20,0	50	41	50	EL-DKOS-30-M 42x2-wd-SC
420	38	M 48 x 2	72,0	41,0	89,0	63,0	22,0	55	50	60	EL-DKOS-38-M 48x2-wd-SC

# EL - EINSTELLBARE - L- VERSCHRAUBUNGEN

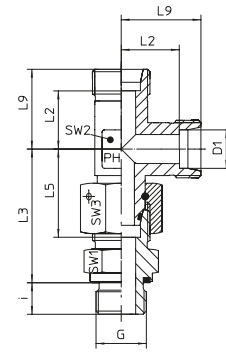
EL - ADJUSTABLE - RUN - TEES



EDELSTAHL / STAINLESS STEEL  
VERBINDUNGSTECHNIK  
FLUID CONNECTORS

Einstellbare L-Verschraubungen mit Dichtkegel  
und O-Ring FPM  
Rohrseitig Schneidringanschluss  
Einschraubgewinde:  
Metrisches Feingewinde - Zylindrisch  
wd = Abdichtung durch Profildichtung - FPM

With Taper and O-Ring - FPM  
Cutting Ring Connection at the Tube Connection side  
Thread: Metric - Parallel  
wd = Sealing by an Elastomer Profiled Ring - FPM



## Reihe / Series L

Druck Pressure	Rohr A.D. Tube O.D.	Gewinde Thread	Ca. Maße Approx. Dimensions								Bestellzeichen Order-Code
			L2	L3	L5	L9	i	SW1	SW2	SW3	
PN	D1	G	L2	L3	L5	L9	i	SW1	SW2	SW3	
500	6	M 10 x 1	12,0	34,5	26,0	19,0	8,0	14	12	14	EL-DKOL-06-M 10x1-wd-OMD
500	8	M 12 x 1,5	14,0	37,5	27,5	21,0	12,0	17	12	17	EL-DKOL-08-M 12x1,5-wd-OMD
500	10	M 14 x 1,5	15,0	40,0	29,0	22,0	12,0	19	14	19	EL-DKOL-10-M 14x1,5-wd-OMD
400	12	M 16 x 1,5	17,0	42,0	29,5	24,0	12,0	22	17	22	EL-DKOL-12-M 16x1,5-wd-OMD
400	15	M 18 x 1,5	21,0	46,0	32,5	28,0	12,0	24	19	27	EL-DKOL-15-M 18x1,5-wd-OMD
400	18	M 22 x 1,5	23,5	50,0	35,5	31,0	14,0	27	24	32	EL-DKOL-18-M 22x1,5-wd-OMD
250	22	M 26 x 1,5	27,5	55,0	38,5	35,0	16,0	32	27	36	EL-DKOL-22-M 26x1,5-wd-OMD
250	28	M 33 x 2	30,5	59,0	41,5	38,0	18,0	41	36	41	EL-DKOL-28-M 33x3-wd-OMD
250	35	M 42 x 2	34,5	68,5	51,0	45,0	20,0	50	41	50	EL-DKOL-35-M 42x2-wd-OMD
250	42	M 48 x 2	40,0	75,0	56,0	51,0	22,0	55	50	60	EL-DKOL-42-M 48x2-wd-OMD

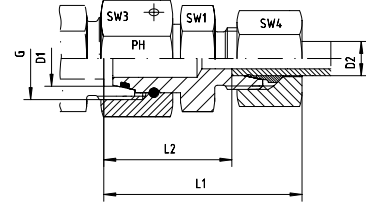
## Reihe / Series S

Druck Pressure	Rohr A.D. Tube O.D.	Gewinde Thread	Ca. Maße Approx. Dimensions								Bestellzeichen Order-Code
			L2	L3	L5	L9	i	SW1	SW2	SW3	
PN	D1	G	L2	L3	L5	L9	i	SW1	SW2	SW3	
800	6	M 12 x 1,5	16,0	40,0	27,0	23,0	12,0	17	12	17	EL-DKOS-06-M 12x1,5-wd-OMD
800	8	M 14 x 1,5	17,0	42,5	27,5	24,0	12,0	19	14	19	EL-DKOS-08-M 14x1,5-wd-OMD
800	10	M 16 x 1,5	17,5	45,0	30,0	25,0	12,0	22	17	22	EL-DKOS-10-M 16x1,5-wd-OMD
630	12	M 18 x 1,5	21,5	48,0	31,0	29,0	12,0	24	17	24	EL-DKOS-12-M 18x1,5-wd-OMD
630	14	M 20 x 1,5	22,0	54,0	35,0	30,0	14,0	27	19	27	EL-DKOS-14-M 20x1,5-wd-OMD
630	16	M 22 x 1,5	24,5	55,0	36,5	33,0	14,0	27	24	30	EL-DKOS-16-M 22x1,5-wd-OMD
420	20	M 27 x 2	26,5	65,0	44,5	37,0	16,0	32	27	36	EL-DKOS-20-M 27x2-wd-OMD
420	25	M 33 x 2	30,0	73,0	50,0	42,0	18,0	41	36	46	EL-DKOS-25-M 33x2-wd-OMD
420	30	M 42 x 2	35,5	78,5	55,0	49,0	20,0	50	41	50	EL-DKOS-30-M 42x2-wd-OMD
420	38	M 48 x 2	41,0	89,0	63,0	57,0	22,0	55	50	60	EL-DKOS-38-M 48x2-wd-OMD



Mit Dichtkegel und O-Ring (DKO) - FPM  
Passend in Bohrungsform W DIN 3861  
Andere Abmessungen auf Anfrage!

With Taper and O-ring - FPM  
For Type of Port End W DIN 3861  
Other dimensions on request!



Reihe / Series L

Druck Pressure	Rohr A.D. Tube O.D.		Gewinde Thread	Ca. Maße Approx. Dimensions			Bemerkungen Notes			Bestellzeichen Order-Code
PN	D1	D2	G	L1	L2	SW1	SW3	SW4		
500	8	6	M 14 x 1,5	38,0	23,5	12	17	14		RED-DKOL-08/06
500	10	6	M 16 x 1,5	40,0	25,0	14	19	14		RED-DKOL-10/06
500	10	8	M 16 x 1,5	40,0	25,0	14	19	17		RED-DKOL-10/08
400	12	6	M 18 x 1,5	40,0	25,0	17	22	14		RED-DKOL-12/06
400	12	8	M 18 x 1,5	40,0	25,0	17	22	17		RED-DKOL-12/08
400	12	10	M 18 x 1,5	41,0	26,0	17	22	19		RED-DKOL-12/10
400	15	6	M 22 x 1,5	43,0	28,5	19	27	14		RED-DKOL-15/06
400	15	8	M 22 x 1,5	43,0	28,5	19	27	17		RED-DKOL-15/08
400	15	10	M 22 x 1,5	44,0	29,5	19	27	19		RED-DKOL-15/10
400	15	12	M 22 x 1,5	44,0	29,5	19	27	22		RED-DKOL-15/12
400	18	6	M 26 x 1,5	43,0	28,0	24	32	14		RED-DKOL-18/06
400	18	8	M 26 x 1,5	43,0	28,0	24	32	17		RED-DKOL-18/08
400	18	10	M 26 x 1,5	44,0	29,0	24	32	19		RED-DKOL-18/10
400	18	12	M 26 x 1,5	44,0	29,0	24	32	22		RED-DKOL-18/12
400	18	15	M 26 x 1,5	45,0	30,0	24	32	27		RED-DKOL-18/15
250	22	6	M 30 x 2	47,0	32,0	27	36	14		RED-DKOL-22/06
250	22	8	M 30 x 2	47,0	32,0	27	36	17		RED-DKOL-22/08
250	22	10	M 30 x 2	48,0	33,0	27	36	19		RED-DKOL-22/10
250	22	12	M 30 x 2	48,0	33,0	27	36	22		RED-DKOL-22/12
250	22	15	M 30 x 2	49,0	34,0	27	36	27		RED-DKOL-22/15
250	22	18	M 30 x 2	50,0	33,5	27	36	32		RED-DKOL-22/18
250	28	6	M 36 x 2	49,0	34,0	32	41	14		RED-DKOL-28/06
250	28	8	M 36 x 2	49,0	34,0	32	41	17		RED-DKOL-28/08
250	28	10	M 36 x 2	50,0	35,0	32	41	19		RED-DKOL-28/10
250	28	12	M 36 x 2	50,0	35,0	32	41	22		RED-DKOL-28/12
250	28	15	M 36 x 2	51,0	36,0	32	41	27		RED-DKOL-28/15
250	28	18	M 36 x 2	52,0	35,5	32	41	32		RED-DKOL-28/18
250	28	22	M 36 x 2	54,0	37,5	32	41	36		RED-DKOL-28/22
250	35	6	M 45 x 2	52,0	37,0	41	50	14		RED-DKOL-35/06
250	35	8	M 45 x 2	52,0	37,0	41	50	17		RED-DKOL-35/08
250	35	10	M 45 x 2	53,0	38,0	41	50	19		RED-DKOL-35/10
250	35	12	M 45 x 2	53,0	38,0	41	50	22		RED-DKOL-35/12
250	35	15	M 45 x 2	54,0	39,0	41	50	27		RED-DKOL-35/15
250	35	18	M 45 x 2	55,0	38,5	41	50	32		RED-DKOL-35/18
250	35	22	M 45 x 2	57,0	40,5	41	50	36		RED-DKOL-35/22
250	35	28	M 45 x 2	57,0	40,5	41	50	41		RED-DKOL-35/28
250	42	6	M 52 x 2	55,0	40,5	50	60	14		RED-DKOL-42/06
250	42	8	M 52 x 2	55,0	40,5	50	60	17		RED-DKOL-42/08
250	42	10	M 52 x 2	56,0	41,5	50	60	19		RED-DKOL-42/10
250	42	12	M 52 x 2	56,0	41,5	50	60	22		RED-DKOL-42/12
250	42	15	M 52 x 2	58,0	42,5	50	60	27		RED-DKOL-42/15
250	42	18	M 52 x 2	58,0	42,0	50	60	32		RED-DKOL-42/18
250	42	22	M 52 x 2	60,0	44,0	50	60	36		RED-DKOL-42/22
250	42	28	M 52 x 2	61,0	44,0	50	60	41		RED-DKOL-42/28
250	42	35	M 52 x 2	65,0	43,0	50	60	50		RED-DKOL-42/35

# RED - REDUZIER - VERSCHRAUBUNGEN

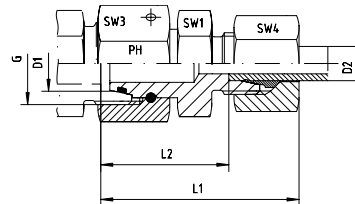
## RED - REDUCING - COUPLINGS



EDELSTAHL / STAINLESS STEEL  
VERBINDUNGSTECHNIK  
FLUID CONNECTORS

Mit Dichtkegel und O-Ring (DKO) - FPM  
Passend in Bohrungsform W DIN 3861  
Andere Abmessungen auf Anfrage!

With Taper and O-ring - FPM  
For Type of Port End W DIN 3861  
Other dimensions on request!



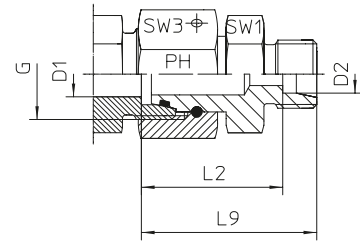
### Reihe / Series L

Druck Pressure	Rohr A.D. Tube O.D.		Gewinde Thread	Ca. Maße Approx. Dimensions			Bemerkungen Notes			Bestellzeichen Order-Code
PN	D1	D2	G	L1	L2	SW1	SW3	SW4		
500	8	6	M 14 x 1,5	38,0	23,5	12	17	14		RED-DKOL-08/06-SC
500	10	6	M 16 x 1,5	40,0	25,0	14	19	14		RED-DKOL-10/06-SC
500	10	8	M 16 x 1,5	40,0	25,0	14	19	17		RED-DKOL-10/08-SC
400	12	6	M 18 x 1,5	40,0	25,0	17	22	14		RED-DKOL-12/06-SC
400	12	8	M 18 x 1,5	40,0	25,0	17	22	17		RED-DKOL-12/08-SC
400	12	10	M 18 x 1,5	41,0	26,0	17	22	19		RED-DKOL-12/10-SC
400	15	6	M 22 x 1,5	43,0	28,5	19	27	14		RED-DKOL-15/06-SC
400	15	8	M 22 x 1,5	43,0	28,5	19	27	17		RED-DKOL-15/08-SC
400	15	10	M 22 x 1,5	44,0	29,5	19	27	19		RED-DKOL-15/10-SC
400	15	12	M 22 x 1,5	44,0	29,5	19	27	22		RED-DKOL-15/12-SC
400	18	6	M 26 x 1,5	43,0	28,0	24	32	14		RED-DKOL-18/06-SC
400	18	8	M 26 x 1,5	43,0	28,0	24	32	17		RED-DKOL-18/08-SC
400	18	10	M 26 x 1,5	44,0	29,0	24	32	19		RED-DKOL-18/10-SC
400	18	12	M 26 x 1,5	44,0	29,0	24	32	22		RED-DKOL-18/12-SC
400	18	15	M 26 x 1,5	45,0	30,0	24	32	27		RED-DKOL-18/15-SC
250	22	6	M 30 x 2	47,0	32,0	27	36	14		RED-DKOL-22/06-SC
250	22	8	M 30 x 2	47,0	32,0	27	36	17		RED-DKOL-22/08-SC
250	22	10	M 30 x 2	48,0	33,0	27	36	19		RED-DKOL-22/10-SC
250	22	12	M 30 x 2	48,0	33,0	27	36	22		RED-DKOL-22/12-SC
250	22	15	M 30 x 2	49,0	34,0	27	36	27		RED-DKOL-22/15-SC
250	22	18	M 30 x 2	50,0	33,5	27	36	32		RED-DKOL-22/18-SC
250	28	6	M 36 x 2	49,0	34,0	32	41	14		RED-DKOL-28/06-SC
250	28	8	M 36 x 2	49,0	34,0	32	41	17		RED-DKOL-28/08-SC
250	28	10	M 36 x 2	50,0	35,0	32	41	19		RED-DKOL-28/10-SC
250	28	12	M 36 x 2	50,0	35,0	32	41	22		RED-DKOL-28/12-SC
250	28	15	M 36 x 2	51,0	36,0	32	41	27		RED-DKOL-28/15-SC
250	28	18	M 36 x 2	52,0	35,5	32	41	32		RED-DKOL-28/18-SC
250	28	22	M 36 x 2	54,0	37,5	32	41	36		RED-DKOL-28/22-SC
250	35	6	M 45 x 2	52,0	37,0	41	50	14		RED-DKOL-35/06-SC
250	35	8	M 45 x 2	52,0	37,0	41	50	17		RED-DKOL-35/08-SC
250	35	10	M 45 x 2	53,0	38,0	41	50	19		RED-DKOL-35/10-SC
250	35	12	M 45 x 2	53,0	38,0	41	50	22		RED-DKOL-35/12-SC
250	35	15	M 45 x 2	54,0	39,0	41	50	27		RED-DKOL-35/15-SC
250	35	18	M 45 x 2	55,0	38,5	41	50	32		RED-DKOL-35/18-SC
250	35	22	M 45 x 2	57,0	40,5	41	50	36		RED-DKOL-35/22-SC
250	35	28	M 45 x 2	57,0	40,5	41	50	41		RED-DKOL-35/28-SC
250	42	6	M 52 x 2	55,0	40,5	50	60	14		RED-DKOL-42/06-SC
250	42	8	M 52 x 2	55,0	40,5	50	60	17		RED-DKOL-42/08-SC
250	42	10	M 52 x 2	56,0	41,5	50	60	19		RED-DKOL-42/10-SC
250	42	12	M 52 x 2	56,0	41,5	50	60	22		RED-DKOL-42/12-SC
250	42	15	M 52 x 2	58,0	42,5	50	60	27		RED-DKOL-42/15-SC
250	42	18	M 52 x 2	58,0	42,0	50	60	32		RED-DKOL-42/18-SC
250	42	22	M 52 x 2	60,0	44,0	50	60	36		RED-DKOL-42/22-SC
250	42	28	M 52 x 2	61,0	44,0	50	60	41		RED-DKOL-42/28-SC
250	42	35	M 52 x 2	65,0	43,0	50	60	50		RED-DKOL-42/35-SC



Mit Dichtkegel und O-Ring (DKO) - FPM  
Passend in Bohrungsform W DIN 3861  
Andere Abmessungen auf Anfrage!

With Taper and O-ring - FPM  
For Type of Port End W DIN 3861  
Other dimensions on request!



Reihe / Series L

Druck Pressure	Rohr A.D. Tube O.D.		Gewinde Thread	Ca. Maße Approx. Dimensions				Bemerkungen Notes	Bestellzeichen Order-Code
PN	D1	D2	G	L2	L9	SW1	SW3		
500	8	6	M 14 x 1,5	23,5	30,5	12,0	17,0		RED-DKOL-08/06-OMD
500	10	6	M 16 x 1,5	25,0	32,0	14,0	19,0		RED-DKOL-10/06-OMD
500	10	8	M 16 x 1,5	25,0	32,0	14,0	19,0		RED-DKOL-10/08-OMD
400	12	6	M 18 x 1,5	25,0	32,0	17,0	22,0		RED-DKOL-12/06-OMD
400	12	8	M 18 x 1,5	25,0	32,0	17,0	22,0		RED-DKOL-12/08-OMD
400	12	10	M 18 x 1,5	26,0	33,0	17,0	22,0		RED-DKOL-12/10-OMD
400	15	6	M 22 x 1,5	28,5	35,5	19,0	27,0		RED-DKOL-15/06-OMD
400	15	8	M 22 x 1,5	28,5	35,5	19,0	27,0		RED-DKOL-15/08-OMD
400	15	10	M 22 x 1,5	29,5	36,5	19,0	27,0		RED-DKOL-15/10-OMD
400	15	12	M 22 x 1,5	29,5	36,5	19,0	27,0		RED-DKOL-15/12-OMD
400	18	6	M 26 x 1,5	28,0	35,0	24,0	32,0		RED-DKOL-18/06-OMD
400	18	8	M 26 x 1,5	28,0	35,0	24,0	32,0		RED-DKOL-18/08-OMD
400	18	10	M 26 x 1,5	29,0	35,0	24,0	32,0		RED-DKOL-18/10-OMD
400	18	12	M 26 x 1,5	29,0	35,0	24,0	32,0		RED-DKOL-18/12-OMD
400	18	15	M 26 x 1,5	30,0	37,0	24,0	32,0		RED-DKOL-18/15-OMD
250	22	6	M 30 x 2	32,0	39,0	27,0	36,0		RED-DKOL-22/06-OMD
250	22	8	M 30 x 2	32,0	39,0	27,0	36,0		RED-DKOL-22/08-OMD
250	22	10	M 30 x 2	33,0	40,0	27,0	36,0		RED-DKOL-22/10-OMD
250	22	12	M 30 x 2	33,0	40,0	27,0	36,0		RED-DKOL-22/12-OMD
250	22	15	M 30 x 2	34,0	41,0	27,0	36,0		RED-DKOL-22/15-OMD
250	22	18	M 30 x 2	33,5	41,0	27,0	36,0		RED-DKOL-22/18-OMD
250	28	6	M 36 x 2	34,0	41,0	32,0	41,0		RED-DKOL-28/06-OMD
250	28	8	M 36 x 2	34,0	41,0	32,0	41,0		RED-DKOL-28/08-OMD
250	28	10	M 36 x 2	35,0	42,0	32,0	41,0		RED-DKOL-28/10-OMD
250	28	12	M 36 x 2	35,0	42,0	32,0	41,0		RED-DKOL-28/12-OMD
250	28	15	M 36 x 2	36,0	43,0	32,0	41,0		RED-DKOL-28/15-OMD
250	28	18	M 36 x 2	35,5	43,0	32,0	41,0		RED-DKOL-28/18-OMD
250	28	22	M 36 x 2	37,5	45,0	32,0	41,0		RED-DKOL-28/22-OMD
250	35	6	M 45 x 2	37,0	44,0	41,0	50,0		RED-DKOL-35/06-OMD
250	35	8	M 45 x 2	37,0	44,0	41,0	50,0		RED-DKOL-35/08-OMD
250	35	10	M 45 x 2	38,0	45,0	41,0	50,0		RED-DKOL-35/10-OMD
250	35	12	M 45 x 2	38,0	45,0	41,0	50,0		RED-DKOL-35/12-OMD
250	35	15	M 45 x 2	39,0	46,0	41,0	50,0		RED-DKOL-35/15-OMD
250	35	18	M 45 x 2	38,5	46,0	41,0	50,0		RED-DKOL-35/18-OMD
250	35	22	M 45 x 2	40,5	48,0	41,0	50,0		RED-DKOL-35/22-OMD
250	35	28	M 45 x 2	40,5	48,0	41,0	50,0		RED-DKOL-35/28-OMD
250	42	6	M 52 x 2	40,5	47,5	50,0	60,0		RED-DKOL-42/06-OMD
250	42	8	M 52 x 2	40,5	47,5	50,0	60,0		RED-DKOL-42/08-OMD
250	42	10	M 52 x 2	41,5	48,5	50,0	60,0		RED-DKOL-42/10-OMD
250	42	12	M 52 x 2	41,5	48,5	50,0	60,0		RED-DKOL-42/12-OMD
250	42	15	M 52 x 2	42,5	49,5	50,0	60,0		RED-DKOL-42/15-OMD
250	42	18	M 52 x 2	42,0	49,5	50,0	60,0		RED-DKOL-42/18-OMD
250	42	22	M 52 x 2	44,0	51,5	50,0	60,0		RED-DKOL-42/22-OMD
250	42	28	M 52 x 2	44,0	51,5	50,0	60,0		RED-DKOL-42/28-OMD
250	42	35	M 52 x 2	43,0	53,5	50,0	60,0		RED-DKOL-42/35-OMD

# RED - REDUZIER - VERSCHRAUBUNGEN

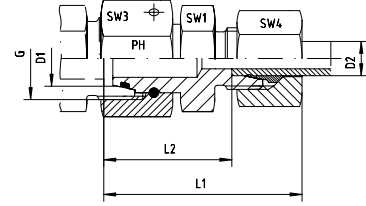
## RED - REDUCING - COUPLINGS



EDELSTAHL / STAINLESS STEEL  
VERBINDUNGSTECHNIK  
FLUID CONNECTORS

Mit Dichtkegel und O-Ring (DKO) - FPM  
Passend in Bohrungsform W DIN 3861  
Andere Abmessungen auf Anfrage!

With Taper and O-ring - FPM  
For Type of Port End W DIN 3861  
Other dimensions on request!



### Reihe / Series S

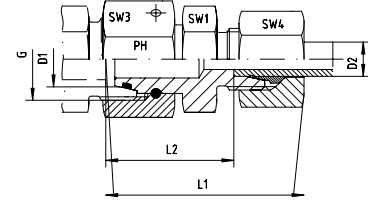
Druck Pressure	Rohr A.D. Tube O.D.		Gewinde Thread	Ca. Maße Approx. Dimensions			Bemerkungen Notes			Bestellzeichen Order-Code
PN	D1	D2	G	L1	L2	SW1	SW3	SW4		
800	8	6	M 16 x 1,5	42,0	27,0	14	19	17		RED-DKOS-08/06
800	10	6	M 18 x 1,5	42,0	27,5	17	22	17		RED-DKOS-10/06
800	10	8	M 18 x 1,5	42,0	27,5	17	22	19		RED-DKOS-10/08
630	12	6	M 20 x 1,5	44,0	29,0	17	24	17		RED-DKOS-12/06
630	12	8	M 20 x 1,5	44,0	29,0	17	24	19		RED-DKOS-12/08
630	12	10	M 20 x 1,5	46,0	29,5	19	24	22		RED-DKOS-12/10
630	14	6	M 22 x 1,5	46,0	31,5	19	27	17		RED-DKOS-14/06
630	14	8	M 22 x 1,5	46,0	31,5	19	27	19		RED-DKOS-14/08
630	14	10	M 22 x 1,5	47,0	31,0	19	27	22		RED-DKOS-14/10
630	14	12	M 22 x 1,5	47,0	31,0	22	27	24		RED-DKOS-14/12
630	16	6	M 24 x 1,5	47,0	32,0	22	30	17		RED-DKOS-16/06
630	16	8	M 24 x 1,5	47,0	32,0	22	30	19		RED-DKOS-16/08
630	16	10	M 24 x 1,5	48,0	31,5	22	30	22		RED-DKOS-16/10
630	16	12	M 24 x 1,5	48,0	31,5	22	30	24		RED-DKOS-16/12
630	16	14	M 24 x 1,5	51,0	33,0	22	30	27		RED-DKOS-16/14
420	20	6	M 30 x 2	51,0	36,0	27	36	17		RED-DKOS-20/06
420	20	8	M 30 x 2	51,0	36,0	27	36	19		RED-DKOS-20/08
420	20	10	M 30 x 2	52,0	35,5	27	36	22		RED-DKOS-20/10
420	20	12	M 30 x 2	52,0	35,5	27	36	24		RED-DKOS-20/12
420	20	14	M 30 x 2	55,0	37,0	27	36	27		RED-DKOS-20/14
420	20	16	M 30 x 2	55,0	36,5	27	36	30		RED-DKOS-20/16
420	25	6	M 36 x 2	53,0	38,5	32	41	17		RED-DKOS-25/06
420	25	8	M 36 x 2	53,0	38,5	32	41	19		RED-DKOS-25/08
420	25	10	M 36 x 2	54,0	38,0	32	41	22		RED-DKOS-25/10
420	25	12	M 36 x 2	54,0	38,0	32	41	24		RED-DKOS-25/12
420	25	14	M 36 x 2	57,0	39,5	32	41	27		RED-DKOS-25/14
420	25	16	M 36 x 2	57,0	39,0	32	41	30		RED-DKOS-25/16
420	25	20	M 36 x 2	61,0	39,0	32	41	36		RED-DKOS-25/20
420	30	6	M 42 x 2	59,0	44,0	41	50	17		RED-DKOS-30/06
420	30	8	M 42 x 2	59,0	44,0	41	50	19		RED-DKOS-30/08
420	30	10	M 42 x 2	60,0	43,5	41	50	22		RED-DKOS-30/10
420	30	12	M 42 x 2	60,0	43,5	41	50	24		RED-DKOS-30/12
420	30	14	M 42 x 2	63,0	45,0	41	50	27		RED-DKOS-30/14
420	30	16	M 42 x 2	63,0	44,5	41	50	30		RED-DKOS-30/16
420	30	20	M 42 x 2	66,0	44,5	41	50	36		RED-DKOS-30/20
420	30	25	M 42 x 2	69,0	45,0	41	50	46		RED-DKOS-30/25
420	38	6	M 52 x 2	63,0	47,0	50	60	17		RED-DKOS-38/06
420	38	8	M 52 x 2	63,0	47,0	50	60	19		RED-DKOS-38/08
420	38	10	M 52 x 2	63,0	47,0	50	60	22		RED-DKOS-38/10
420	38	12	M 52 x 2	63,0	47,0	50	60	24		RED-DKOS-38/12
420	38	14	M 52 x 2	66,0	48,5	50	60	27		RED-DKOS-38/14
420	38	16	M 52 x 2	66,0	48,0	50	60	30		RED-DKOS-38/16
420	38	20	M 52 x 2	70,0	48,0	50	60	36		RED-DKOS-38/20
420	38	25	M 52 x 2	73,0	48,5	50	60	46		RED-DKOS-38/25
420	38	30	M 52 x 2	76,0	49,0	50	60	50		RED-DKOS-38/30





Mit Dichtkegel und O-Ring (DKO) - FPM  
Passend in Bohrungsform W DIN 3861  
Andere Abmessungen auf Anfrage!

With Taper and O-ring - FPM  
For Type of Port End W DIN 3861  
Other dimensions on request!



Reihe / Series S

Druck Pressure	Rohr A.D. Tube O.D.		Gewinde Thread	Ca. Maße Approx. Dimensions			Bemerkungen Notes			Bestellzeichen Order-Code
PN	D1	D2	G	L1	L2	SW1	SW3	SW4		
800	8	6	M 16 x 1,5	42,0	27,0	14	19	17		RED-DKOS-08/06-SC
800	10	6	M 18 x 1,5	42,0	27,5	17	22	17		RED-DKOS-10/06-SC
800	10	8	M 18 x 1,5	42,0	27,5	17	22	19		RED-DKOS-10/08-SC
630	12	6	M 20 x 1,5	44,0	29,0	17	24	17		RED-DKOS-12/06-SC
630	12	8	M 20 x 1,5	44,0	29,0	17	24	19		RED-DKOS-12/08-SC
630	12	10	M 20 x 1,5	46,0	29,5	19	24	22		RED-DKOS-12/10-SC
630	14	6	M 22 x 1,5	46,0	31,5	19	27	17		RED-DKOS-14/06-SC
630	14	8	M 22 x 1,5	46,0	31,5	19	27	19		RED-DKOS-14/08-SC
630	14	10	M 22 x 1,5	47,0	31,0	19	27	22		RED-DKOS-14/10-SC
630	14	12	M 22 x 1,5	47,0	31,0	22	27	24		RED-DKOS-14/12-SC
630	16	6	M 24 x 1,5	47,0	32,0	22	30	17		RED-DKOS-16/06-SC
630	16	8	M 24 x 1,5	47,0	32,0	22	30	19		RED-DKOS-16/08-SC
630	16	10	M 24 x 1,5	48,0	31,5	22	30	22		RED-DKOS-16/10-SC
630	16	12	M 24 x 1,5	48,0	31,5	22	30	24		RED-DKOS-16/12-SC
630	16	14	M 24 x 1,5	51,0	33,0	22	30	27		RED-DKOS-16/14-SC
420	20	6	M 30 x 2	51,0	36,0	27	36	17		RED-DKOS-20/06-SC
420	20	8	M 30 x 2	51,0	36,0	27	36	19		RED-DKOS-20/08-SC
420	20	10	M 30 x 2	52,0	35,5	27	36	22		RED-DKOS-20/10-SC
420	20	12	M 30 x 2	52,0	35,5	27	36	24		RED-DKOS-20/12-SC
420	20	14	M 30 x 2	55,0	37,0	27	36	27		RED-DKOS-20/14-SC
420	20	16	M 30 x 2	55,0	36,5	27	36	30		RED-DKOS-20/16-SC
420	25	6	M 36 x 2	53,0	38,5	32	41	17		RED-DKOS-25/06-SC
420	25	8	M 36 x 2	53,0	38,5	32	41	19		RED-DKOS-25/08-SC
420	25	10	M 36 x 2	54,0	38,0	32	41	22		RED-DKOS-25/10-SC
420	25	12	M 36 x 2	54,0	38,0	32	41	24		RED-DKOS-25/12-SC
420	25	14	M 36 x 2	57,0	39,5	32	41	27		RED-DKOS-25/14-SC
420	25	16	M 36 x 2	57,0	39,0	32	41	30		RED-DKOS-25/16-SC
420	25	20	M 36 x 2	61,0	39,0	32	41	36		RED-DKOS-25/20-SC
420	30	6	M 42 x 2	59,0	44,0	41	50	17		RED-DKOS-30/06-SC
420	30	8	M 42 x 2	59,0	44,0	41	50	19		RED-DKOS-30/08-SC
420	30	10	M 42 x 2	60,0	43,5	41	50	22		RED-DKOS-30/10-SC
420	30	12	M 42 x 2	60,0	43,5	41	50	24		RED-DKOS-30/12-SC
420	30	14	M 42 x 2	63,0	45,0	41	50	27		RED-DKOS-30/14-SC
420	30	16	M 42 x 2	63,0	44,5	41	50	30		RED-DKOS-30/16-SC
420	30	20	M 42 x 2	66,0	44,5	41	50	36		RED-DKOS-30/20-SC
420	30	25	M 42 x 2	69,0	45,0	41	50	46		RED-DKOS-30/25-SC
420	38	6	M 52 x 2	63,0	47,0	50	60	17		RED-DKOS-38/06-SC
420	38	8	M 52 x 2	63,0	47,0	50	60	19		RED-DKOS-38/08-SC
420	38	10	M 52 x 2	63,0	47,0	50	60	22		RED-DKOS-38/10-SC
420	38	12	M 52 x 2	63,0	47,0	50	60	24		RED-DKOS-38/12-SC
420	38	14	M 52 x 2	66,0	48,5	50	60	27		RED-DKOS-38/14-SC
420	38	16	M 52 x 2	66,0	48,0	50	60	30		RED-DKOS-38/16-SC
420	38	20	M 52 x 2	70,0	48,0	50	60	36		RED-DKOS-38/20-SC
420	38	25	M 52 x 2	73,0	48,5	50	60	46		RED-DKOS-38/25-SC
420	38	30	M 52 x 2	76,0	49,0	50	60	50		RED-DKOS-38/30-SC

# RED - REDUZIER - VERSCHRAUBUNGEN

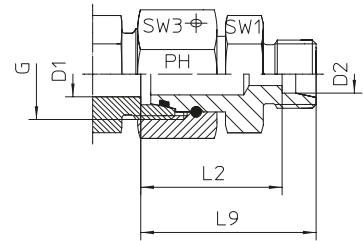
## RED - REDUCING - COUPLINGS



EDELSTAHL / STAINLESS STEEL  
VERBINDUNGSTECHNIK  
FLUID CONNECTORS

Mit Dichtkegel und O-Ring (DKO) - FPM  
Passend in Bohrungsform W DIN 3861  
Andere Abmessungen auf Anfrage!

With Taper and O-ring - FPM  
For Type of Port End W DIN 3861  
Other dimensions on request!



### Reihe / Series S

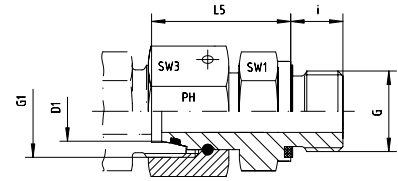
Druck Pressure	Rohr A.D. Tube O.D.	Gewinde Thread	Ca. Maße Approx. Dimensions				Bemerkungen Notes	Bestellzeichen Order-Code
PN	D1	D2	G	L2	L9	SW1	SW2	
800	8	6	M 16 x 1,5	27,0	34,0	14,0	19,0	RED-DKOS-08/06-OMD
800	10	6	M 18 x 1,5	27,5	34,5	17,0	22,0	RED-DKOS-10/06-OMD
800	10	8	M 18 x 1,5	27,5	34,5	17,0	22,0	RED-DKOS-10/08-OMD
630	12	6	M 20 x 1,5	29,0	37,0	17,0	24,0	RED-DKOS-12/06-OMD
630	12	8	M 20 x 1,5	29,0	37,0	17,0	24,0	RED-DKOS-12/08-OMD
630	12	10	M 20 x 1,5	29,5	37,0	19,0	24,0	RED-DKOS-12/10-OMD
630	14	6	M 22 x 1,5	31,5	38,5	19,0	27,0	RED-DKOS-14/06-OMD
630	14	8	M 22 x 1,5	31,5	38,5	19,0	27,0	RED-DKOS-14/08-OMD
630	14	10	M 22 x 1,5	31,0	38,5	19,0	27,0	RED-DKOS-14/10-OMD
630	14	12	M 22 x 1,5	31,0	38,5	22,0	27,0	RED-DKOS-14/12-OMD
630	16	6	M 24 x 1,5	32,0	39,0	22,0	30,0	RED-DKOS-16/06-OMD
630	16	8	M 24 x 1,5	32,0	39,0	22,0	30,0	RED-DKOS-16/08-OMD
630	16	10	M 24 x 1,5	31,5	39,0	22,0	30,0	RED-DKOS-16/10-OMD
630	16	12	M 24 x 1,5	31,5	39,0	22,0	30,0	RED-DKOS-16/12-OMD
630	16	14	M 24 x 1,5	33,0	41,0	22,0	30,0	RED-DKOS-16/14-OMD
420	20	6	M 30 x 2	36,0	43,0	27,0	36,0	RED-DKOS-20/06-OMD
420	20	8	M 30 x 2	36,0	43,0	27,0	36,0	RED-DKOS-20/08-OMD
420	20	10	M 30 x 2	35,5	43,0	27,0	36,0	RED-DKOS-20/10-OMD
420	20	12	M 30 x 2	35,5	43,0	27,0	36,0	RED-DKOS-20/12-OMD
420	20	14	M 30 x 2	37,0	45,0	27,0	36,0	RED-DKOS-20/14-OMD
420	20	16	M 30 x 2	36,5	45,0	27,0	36,0	RED-DKOS-20/16-OMD
420	25	6	M 36 x 2	38,5	45,5	32,0	41,0	RED-DKOS-25/06-OMD
420	25	8	M 36 x 2	38,5	45,5	32,0	41,0	RED-DKOS-25/08-OMD
420	25	10	M 36 x 2	38,0	45,5	32,0	41,0	RED-DKOS-25/10-OMD
420	25	12	M 36 x 2	38,0	45,5	32,0	41,0	RED-DKOS-25/12-OMD
420	25	14	M 36 x 2	39,5	47,5	32,0	41,0	RED-DKOS-25/14-OMD
420	25	16	M 36 x 2	39,0	47,5	32,0	41,0	RED-DKOS-25/16-OMD
420	25	20	M 36 x 2	39,0	49,5	32,0	41,0	RED-DKOS-25/20-OMD
420	30	6	M 42 x 2	44,0	51,0	41,0	50,0	RED-DKOS-30/06-OMD
420	30	8	M 42 x 2	44,0	51,0	41,0	50,0	RED-DKOS-30/08-OMD
420	30	10	M 42 x 2	43,5	51,0	41,0	50,0	RED-DKOS-30/10-OMD
420	30	12	M 42 x 2	43,5	51,0	41,0	50,0	RED-DKOS-30/12-OMD
420	30	14	M 42 x 2	45,0	53,0	41,0	50,0	RED-DKOS-30/14-OMD
420	30	16	M 42 x 2	44,5	53,0	41,0	50,0	RED-DKOS-30/16-OMD
420	30	20	M 42 x 2	44,5	55,0	41,0	50,0	RED-DKOS-30/20-OMD
420	30	25	M 42 x 2	45,0	57,0	41,0	50,0	RED-DKOS-30/25-OMD
420	38	6	M 52 x 2	47,5	54,6	50,0	60,0	RED-DKOS-38/06-OMD
420	38	8	M 52 x 2	47,5	54,6	50,0	60,0	RED-DKOS-38/08-OMD
420	38	10	M 52 x 2	47,0	54,6	50,0	60,0	RED-DKOS-38/10-OMD
420	38	12	M 52 x 2	47,0	54,6	50,0	60,0	RED-DKOS-38/12-OMD
420	38	14	M 52 x 2	48,5	56,5	50,0	60,0	RED-DKOS-38/14-OMD
420	38	16	M 52 x 2	48,0	56,5	50,0	60,0	RED-DKOS-38/16-OMD
420	38	20	M 52 x 2	48,0	58,5	50,0	60,0	RED-DKOS-38/20-OMD
420	38	25	M 52 x 2	48,5	60,5	50,0	60,0	RED-DKOS-38/25-OMD
420	38	30	M 52 x 2	49,0	62,5	50,0	60,0	RED-DKOS-38/30-OMD





Mit Dichtkegel und O-Ring - FPM  
Passend in Bohrungsform W DIN 3861  
Einschraubgewinde:  
Metrisches Feingewinde - Zylindrisch  
wd = Abdichtung durch Profildichtung - FPM

With Taper and O-ring - FPM  
For Type of Port End W DIN 3861  
Thread: Metric - Parallel  
wd = Sealing by an Elastomer Profiled Ring - FPM



Reihe / Series L

Druck Pressure	Rohr A.D. Tube O.D.	Gewinde Thread		Ca. Maße Approx. Dimensions				Bemerkungen Notes	Bestellzeichen Order-Code
PN	D1	G	G1	L5	i	SW1	SW3		
500	6	M 10 x 1	M 12 x 1,5	24,5	8,0	14	14		EGE-DKOL-06-M 10x1-wd
500	8	M 12 x 1,5	M 14 x 1,5	26,5	12,0	17	17		EGE-DKOL-08-M 12x1,5-wd
500	10	M 14 x 1,5	M 16 x 1,5	27,5	12,0	19	19		EGE-DKOL-10-M 14x1,5-wd
400	12	M 16 x 1,5	M 18 x 1,5	30,5	12,0	22	22		EGE-DKOL-12-M 16x1,5-wd
400	15	M 18 x 1,5	M 22 x 1,5	31,5	12,0	24	27		EGE-DKOL-15-M 18x1,5-wd
400	18	M 22 x 1,5	M 26 x 1,5	31,5	14,0	27	32		EGE-DKOL-18-M 22x1,5-wd
250	22	M 26 x 1,5	M 30 x 2	32,5	16,0	32	36		EGE-DKOL-22-M 26x1,5-wd
250	28	M 33 x 2	M 36 x 2	35,0	18,0	41	41		EGE-DKOL-28-M 33x2-wd
250	35	M 42 x 2	M 45 x 2	42,5	20,0	50	50		EGE-DKOL-35-M 42x2-wd
250	42	M 48 x 2	M 52 x 2	46,5	22,0	55	60		EGE-DKOL-42-M 48x2-wd

Reihe / Series S

Druck Pressure	Rohr A.D. Tube O.D.	Gewinde Thread		Ca. Maße Approx. Dimensions				Bemerkungen Notes	Bestellzeichen Order-Code
PN	D1	G	G1	L5	i	SW1	SW3		
800	6	M 12 x 1,5	M 14 x 1,5	27,0	12,0	17	17		EGE-DKOS-06-M 12x1,5-wd
800	8	M 14 x 1,5	M 16 x 1,5	29,5	12,0	19	19		EGE-DKOS-08-M 14x1,5-wd
800	10	M 16 x 1,5	M 18 x 1,5	32,0	12,0	22	22		EGE-DKOS-10-M 16x1,5-wd
630	12	M 18 x 1,5	M 20 x 1,5	34,0	12,0	24	24		EGE-DKOS-12-M 18x1,5-wd
630	14	M 20 x 1,5	M 22 x 1,5	36,5	14,0	27	27		EGE-DKOS-14-M 20x1,5-wd
630	16	M 22 x 1,5	M 24 x 1,5	37,0	14,0	27	30		EGE-DKOS-16-M 22x1,5-wd
420	20	M 27 x 2	M 30 x 2	43,0	16,0	32	36		EGE-DKOS-20-M 27x2-wd
420	25	M 33 x 2	M 36 x 2	48,0	18,0	41	46		EGE-DKOS-25-M 33x2-wd
420	30	M 42 x 2	M 42 x 2	51,0	20,0	50	50		EGE-DKOS-30-M 42x2-wd
420	38	M 48 x 2	M 52 x 2	60,0	22,0	55	60		EGE-DKOS-38-M 48x2-wd

# EGE - GERADE - EINSCHRAUBSTUTZEN

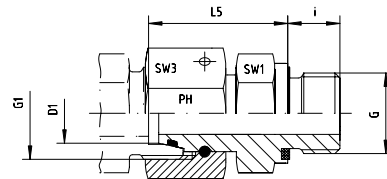
EGE - SWIVEL FEMALE - MALE - CONNECTORS



EDELSTAHL / STAINLESS STEEL  
VERBINDUNGSTECHNIK  
FLUID CONNECTORS

Mit Dichtkegel und O-Ring - FPM  
Passend in Bohrungsform W DIN 3861  
Einschraubgewinde:  
Whitworth-Rohrgewinde - Zylindrisch  
wd = Abdichtung durch Profildichtung - FPM

With Taper and O-ring - FPM  
For Type of Port End W DIN 3861  
Thread: BSP - Parallel  
wd = Sealing by an Elastomer Profiled Ring - FPM



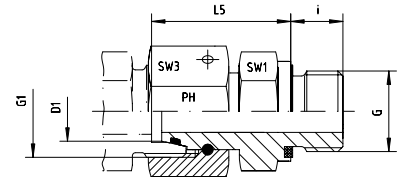
## Reihe / Series L

Druck Pressure	Rohr A.D. Tube O.D.	Gewinde Thread	Ca. Maße Approx. Dimensions				Bemerkungen Notes	Bestellzeichen Order-Code
PN	D1	G	G1	L5	i	SW1	SW3	
500	6	G 1/8"	M 12 x 1,5	24,5	8,0	14	14	EGE-DKOL-06-G 1/8"-wd
500	6	G 1/4"	M 12 x 1,5	27,0	12,0	19	14	EGE-DKOL-06-G 1/4"-wd
400	6	G 3/8"	M 12 x 1,5	28,0	12,0	22	14	EGE-DKOL-06-G 3/8"-wd
500	8	G 1/8"	M 14 x 1,5	25,5	8,0	14	17	EGE-DKOL-08-G 1/8"-wd
500	8	G 1/4"	M 14 x 1,5	29,5	12,0	19	17	EGE-DKOL-08-G 1/4"-wd
400	8	G 3/8"	M 14 x 1,5	29,5	12,0	22	17	EGE-DKOL-08-G 3/8"-wd
400	8	G 1/2"	M 14 x 1,5	29,0	14,0	27	17	EGE-DKOL-08-G 1/2"-wd
500	10	G 1/8"	M 16 x 1,5	25,5	8,0	14	19	EGE-DKOL-10-G 1/8"-wd
500	10	G 1/4"	M 16 x 1,5	27,5	12,0	19	19	EGE-DKOL-10-G 1/4"-wd
400	10	G 1/2"	M 16 x 1,5	30,0	14,0	27	19	EGE-DKOL-10-G 1/2"-wd
400	10	G 3/8"	M 16 x 1,5	30,0	12,0	22	19	EGE-DKOL-10-G 3/8"-wd
400	12	G 1/8"	M 18 x 1,5	26,0	8,0	17	22	EGE-DKOL-12-G 1/8"-wd
400	12	G 1/4"	M 18 x 1,5	28,0	12,0	19	22	EGE-DKOL-12-G 1/4"-wd
400	12	G 3/8"	M 18 x 1,5	32,0	12,0	22	22	EGE-DKOL-12-G 3/8"-wd
400	12	G 1/2"	M 18 x 1,5	34,5	14,0	27	22	EGE-DKOL-12-G 1/2"-wd
400	15	G 3/8"	M 22 x 1,5	35,0	12,0	24	27	EGE-DKOL-15-G 3/8"-wd
400	15	G 1/2"	M 22 x 1,5	35,0	14,0	27	27	EGE-DKOL-15-G 1/2"-wd
250	15	G 3/4"	M 22 x 1,5	48,0	16,0	32	27	EGE-DKOL-15-G 3/4"-wd
400	18	G 3/8"	M 26 x 1,5	34,0	12,0	24	32	EGE-DKOL-18-G 3/8"-wd
400	18	G 1/2"	M 26 x 1,5	31,5	14,0	27	32	EGE-DKOL-18-G 1/2"-wd
315	18	G 3/4"	M 26 x 1,5	33,0	16,0	32	32	EGE-DKOL-18-G 3/4"-wd
250	22	G 1/2"	M 30 x 2	32,0	14,0	27	36	EGE-DKOL-22-G 1/2"-wd
250	22	G 3/4"	M 30 x 2	32,5	16,0	32	36	EGE-DKOL-22-G 3/4"-wd
250	22	G 1"	M 30 x 2	33,0	18,0	41	36	EGE-DKOL-22-G 1"-wd
250	28	G 3/4"	M 36 x 2	35,0	16,0	32	41	EGE-DKOL-28-G 3/4"-wd
250	28	G 1"	M 36 x 2	35,0	18,0	41	41	EGE-DKOL-28-G 1"-wd
250	35	G 1 1/4"	M 45 x 2	42,5	20,0	50	50	EGE-DKOL-35-G 1 1/4"-wd
250	42	G 1 1/4"	M 52 x 2	40,5	20,0	50	60	EGE-DKOL-42-G 1 1/4"-wd
250	42	G 1 1/2"	M 52 x 2	46,5	22,0	55	60	EGE-DKOL-42-G 1 1/2"-wd



Mit Dichtkegel und O-Ring - FPM  
Passend in Bohrungsform W DIN 3861  
Einschraubgewinde:  
Whitworth-Rohrgewinde - Zylindrisch  
wd = Abdichtung durch Profildichtung - FPM

With Taper and O-ring - FPM  
For Type of Port End W DIN 3861  
Thread: BSP - Parallel  
wd = Sealing by an Elastomer Profiled Ring - FPM



Reihe / Series S

Druck Pressure	Rohr A.D. Tube O.D.	Gewinde Thread	Ca. Maße Approx. Dimensions					Bemerkungen Notes	Bestellzeichen Order-Code
PN	D1	G	G1	L5	i	SW1	SW3		
800	6	G 1/4"	M 14 x 1,5	27,0	12,0	19	17		EGE-DKOS-06-G 1/4"-wd
800	8	G 1/4"	M 16 x 1,5	29,5	12,0	19	19		EGE-DKOS-08-G 1/4"-wd
800	8	G 3/8"	M 16 x 1,5	29,5	12,0	22	19		EGE-DKOS-08-G 3/8"-wd
800	10	G 3/8"	M 18 x 1,5	32,0	12,0	22	22		EGE-DKOS-10-G 3/8"-wd
800	10	G 1/4"	M 18 x 1,5	27,5	12,0	19	22		EGE-DKOS-10-G 1/4"-wd
630	10	G 1/2"	M 18 x 1,5	32,0	14,0	27	22		EGE-DKOS-10-G 1/2"-wd
630	12	G 1/4"	M 20 x 1,5	42,0	12,0	19	24		EGE-DKOS-12-G 1/4"-wd
630	12	G 3/8"	M 20 x 1,5	34,0	12,0	22	24		EGE-DKOS-12-G 3/8"-wd
630	12	G 1/2"	M 20 x 1,5	34,5	14,0	27	24		EGE-DKOS-12-G 1/2"-wd
630	14	G 1/2"	M 22 x 1,5	36,5	14,0	27	27		EGE-DKOS-14-G 1/2"-wd
630	16	G 3/8"	M 24 x 1,5	37,0	12,0	24	30		EGE-DKOS-16-G 3/8"-wd
630	16	G 1/2"	M 24 x 1,5	37,0	14,0	27	30		EGE-DKOS-16-G 1/2"-wd
420	16	G 3/4"	M 24 x 1,5	39,0	16,0	32	30		EGE-DKOS-16-G 3/4"-wd
420	20	G 1/2"	M 30 x 2	38,0	14,0	27	36		EGE-DKOS-20-G 1/2"-wd
420	20	G 3/4"	M 30 x 2	43,0	16,0	32	36		EGE-DKOS-20-G 3/4"-wd
420	20	G 1"	M 30 x 2	55,0	18,0	41	36		EGE-DKOS-20-G 1"-wd
420	25	G 3/4"	M 36 x 2	58,0	16,0	32	46		EGE-DKOS-25-G 3/4"-wd
420	25	G 1"	M 36 x 2	48,0	18,0	41	46		EGE-DKOS-25-G 1"-wd
420	30	G 1"	M 42 x 2	46,0	18,0	41	50		EGE-DKOS-30-G 1"-wd
420	30	G 1 1/4"	M 42 x 2	51,0	20,0	50	50		EGE-DKOS-30-G 1 1/4"-wd
420	38	G 1 1/2"	M 52 x 2	60,0	22,0	55	60		EGE-DKOS-38-G 1 1/2"-wd

# EGE - GERADE - EINSCHRAUBSTUTZEN

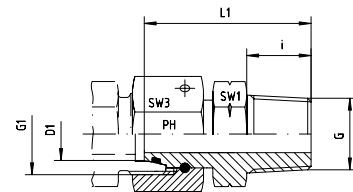
EGE - SWIVEL FEMALE - MALE - CONNECTORS



EDELSTAHL / STAINLESS STEEL  
VERBINDUNGSTECHNIK  
FLUID CONNECTORS

Mit Dichtkegel und O-Ring - FPM  
Passend in Bohrungsform W DIN 3861  
Einschraubgewinde: NPT

With Taper and O-ring - FPM  
For Type of Port End W DIN 3861  
Thread: NPT



## Reihe / Series L

Druck Pressure	Rohr A.D. Tube O.D.	Gewinde Thread	Ca. Maße Approx. Dimensions				Bemerkungen Notes	Bestellzeichen Order-Code
PN	D1	G	G1	L1	i	SW1	SW3	
500	6	1/8" NPT	M 12 x 1,5	32,0	10,0	12	14	EGE-DKOL-06-NPT-1/8"
500	6	1/4" NPT	M 12 x 1,5	38,0	15,0	14	14	EGE-DKOL-06-NPT-1/4"
500	8	1/4" NPT	M 14 x 1,5	42,5	15,0	14	17	EGE-DKOL-08-NPT-1/4"
500	10	1/4" NPT	M 16 x 1,5	42,5	15,0	14	19	EGE-DKOL-10-NPT-1/4"
400	10	3/8" NPT	M 16 x 1,5	43,0	15,3	19	19	EGE-DKOL-10-NPT-3/8"
400	12	1/4" NPT	M 18 x 1,5	40,0	15,0	17	22	EGE-DKOL-12-NPT-1/4"
400	12	3/8" NPT	M 18 x 1,5	40,0	15,3	19	22	EGE-DKOL-12-NPT-3/8"
400	12	1/2" NPT	M 18 x 1,5	47,0	20,0	22	22	EGE-DKOL-12-NPT-1/2"
400	15	1/2" NPT	M 22 x 1,5	49,0	20,0	22	27	EGE-DKOL-15-NPT-1/2"
400	18	1/2" NPT	M 26 x 1,5	49,0	20,0	24	32	EGE-DKOL-18-NPT-1/2"
250	22	1/2" NPT	M 30 x 2	49,0	20,0	27	36	EGE-DKOL-22-NPT-1/2"
250	22	3/4" NPT	M 30 x 2	50,0	20,0	27	36	EGE-DKOL-22-NPT-3/4"
250	28	1" NPT	M 36 x 2	61,0	25,0	36	41	EGE-DKOL-28-NPT-1"
250	35	1 1/4" NPT	M 45 x 2	60,5	25,5	46	50	EGE-DKOL-35-NPT-1 1/4"
250	42	1 1/2" NPT	M 52 x 2	63,0	26,0	50	60	EGE-DKOL-42-NPT-1 1/2"

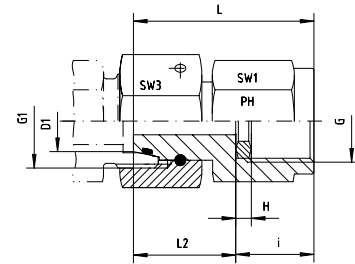
## Reihe / Series S

Druck Pressure	Rohr A.D. Tube O.D.	Gewinde Thread	Ca. Maße Approx. Dimensions				Bemerkungen Notes	Bestellzeichen Order-Code
PN	D1	G	G1	L1	i	SW1	SW3	
800	6	1/4" NPT	M 14 x 1,5	38,0	15,0	14	17	EGE-DKOS-06-NPT-1/4"
800	8	1/4" NPT	M 16 x 1,5	39,0	15,0	14	19	EGE-DKOS-08-NPT-1/4"
800	10	3/8" NPT	M 18 x 1,5	40,0	15,3	19	22	EGE-DKOS-10-NPT-3/8"
630	12	1/4" NPT	M 20 x 1,5	41,5	15,0	17	24	EGE-DKOS-12-NPT-1/4"
630	12	3/8" NPT	M 20 x 1,5	41,5	15,3	19	24	EGE-DKOS-12-NPT-3/8"
630	12	1/2" NPT	M 20 x 1,5	48,0	20,0	22	24	EGE-DKOS-12-NPT-1/2"
630	14	1/2" NPT	M 22 x 1,5	48,0	20,0	22	27	EGE-DKOS-14-NPT-1/2"
630	16	3/8" NPT	M 24 x 1,5	45,0	15,3	22	30	EGE-DKOS-16-NPT-3/8"
630	16	1/2" NPT	M 24 x 1,5	49,0	20,0	22	30	EGE-DKOS-16-NPT-1/2"
420	16	3/4" NPT	M 24 x 1,5	49,0	20,0	27	30	EGE-DKOS-16-NPT-3/4"
420	20	3/4" NPT	M 30 x 2	52,0	20,0	27	36	EGE-DKOS-20-NPT-3/4"
420	25	1" NPT	M 36 x 2	66,0	25,0	36	46	EGE-DKOS-25-NPT-1"
420	30	1 1/4" NPT	M 42 x 2	65,5	25,5	46	50	EGE-DKOS-30-NPT-1 1/4"
420	38	1 1/2" NPT	M 52 x 2	66,0	26,0	50	60	EGE-DKOS-38-NPT-1 1/2"



Einstellbare Manometer-Verschraubung  
mit Dichtkegel und O-Ring - FPM  
Passend in Bohrungsform W DIN 3861

For Pressure Gauge Connection  
with Taper and O-ring - FPM  
For Type of Port End W DIN 3861



Reihe / Series L

Druck Pressure	Rohr A.D. Tube O.D.	Gewinde Thread	Ca. Maße Approx. Dimensions						Bemerkungen Notes	Bestellzeichen Order-Code
PN	D1	G	G1	L	i	H	SW1	SW3		
315	6	1/4"	M 12 x 1,5	35,5	14,5	4,5	19	14	MVE-DKOL-06-G 1/4"	
315	6	1/2"	M 12 x 1,5	43,0	20,0	5,0	27	14	MVE-DKOL-06-G 1/2"	
315	8	1/4"	M 14 x 1,5	35,5	14,5	4,5	19	17	MVE-DKOL-08-G 1/4"	
315	8	1/2"	M 14 x 1,5	43,7	20,0	5,0	27	17	MVE-DKOL-08-G 1/2"	
315	10	1/4"	M 16 x 1,5	36,0	14,5	4,5	19	19	MVE-DKOL-10-G 1/4"	
315	10	1/2"	M 16 x 1,5	43,7	20,0	5,0	27	19	MVE-DKOL-10-G 1/2"	
315	12	1/4"	M 18 x 1,5	36,0	14,5	4,5	19	22	MVE-DKOL-12-G 1/4"	
315	12	1/2"	M 18 x 1,5	44,0	20,0	5,0	27	22	MVE-DKOL-12-G 1/2"	

Reihe / Series S

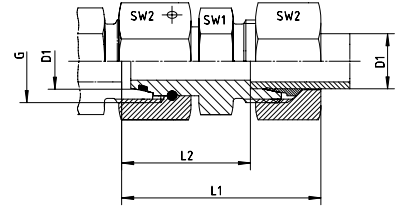
Druck Pressure	Rohr A.D. Tube O.D.	Gewinde Thread	Ca. Maße Approx. Dimensions						Bemerkungen Notes	Bestellzeichen Order-Code
PN	D1	G	G1	L	i	H	SW1	SW3		
630	6	1/4"	M 14 x 1,5	36,0	14,5	4,5	19	17	MVE-DKOS-06-G 1/4"	
630	6	1/2"	M 14 x 1,5	43,0	20,0	5,0	27	17	MVE-DKOS-06-G 1/2"	
630	8	1/4"	M 16 x 1,5	37,5	14,5	4,5	19	19	MVE-DKOS-08-G 1/4"	
630	8	1/2"	M 16 x 1,5	43,0	20,0	5,0	27	19	MVE-DKOS-08-G 1/2"	
630	10	1/4"	M 18 x 1,5	37,5	14,5	4,5	19	22	MVE-DKOS-10-G 1/4"	
630	10	1/2"	M 18 x 1,5	43,5	20,0	5,0	27	22	MVE-DKOS-10-G 1/2"	
630	12	1/4"	M 20 x 1,5	39,0	14,5	4,5	19	24	MVE-DKOS-12-G 1/4"	
630	12	1/2"	M 20 x 1,5	45,0	20,0	5,0	27	24	MVE-DKOS-12-G 1/2"	

# DA - DISTANZADAPTER

## DA - DISTANCE - ADAPTORS

Mit Dichtkegel und O-Ring (DKO) - FPM  
Passend in Bohrungsform W DIN 3861

With Taper and O-ring - FPM  
For Type of Port End W DIN 3861



### Reihe / Series L

Druck Pressure	Rohr A.D. Tube O.D.	Gewinde Thread	Ca. Maße Approx. Dimensions				Bemerkungen Notes	Bestellzeichen Order-Code
PN	D1	G	L1	L2	SW1	SW2		
500	6	M 12 x 1,5	51,0	36,0	12	14		DA-DKOL-06
500	8	M 14 x 1,5	51,0	36,0	14	17		DA-DKOL-08
500	10	M 16 x 1,5	51,0	36,0	17	19		DA-DKOL-10
400	12	M 18 x 1,5	51,0	36,0	19	22		DA-DKOL-12
400	15	M 22 x 1,5	51,0	36,0	24	27		DA-DKOL-15
400	18	M 26 x 1,5	52,0	36,0	27	32		DA-DKOL-18
250	22	M 30 x 2	56,0	40,0	32	36		DA-DKOL-22
250	28	M 36 x 2	57,0	40,0	41	41		DA-DKOL-28
250	35	M 45 x 2	72,0	50,0	46	50		DA-DKOL-35
250	42	M 52 x 2	83,0	60,0	55	60		DA-DKOL-42

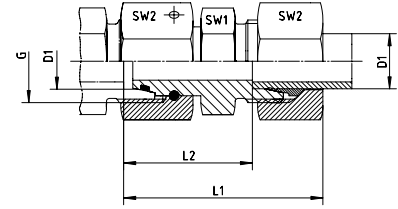
### Reihe / Series S

Druck Pressure	Rohr A.D. Tube O.D.	Gewinde Thread	Ca. Maße Approx. Dimensions				Bemerkungen Notes	Bestellzeichen Order-Code
PN	D1	G	L1	L2	SW1	SW2		
800	6	M 14 x 1,5	51,0	36,0	14	17		DA-DKOS-06
800	8	M 16 x 1,5	51,0	36,0	17	19		DA-DKOS-08
800	10	M 18 x 1,5	52,0	36,0	19	22		DA-DKOS-10
630	12	M 20 x 1,5	52,0	36,0	22	24		DA-DKOS-12
630	14	M 22 x 1,5	58,0	40,0	24	27		DA-DKOS-14
630	16	M 24 x 1,5	58,0	40,0	27	30		DA-DKOS-16
420	20	M 30 x 2	68,0	46,0	32	36		DA-DKOS-20
420	25	M 36 x 2	74,0	50,0	41	46		DA-DKOS-25
420	30	M 42 x 2	83,0	56,0	46	50		DA-DKOS-30
420	38	M 52 x 2	91,0	60,0	55	60		DA-DKOS-38



Mit Dichtkegel und O-Ring (DKO) - FPM  
Passend in Bohrungsform W DIN 3861

With Taper and O-ring - FPM  
For Type of Port End W DIN 3861



Reihe / Series L

Druck Pressure	Rohr A.D. Tube O.D.	Gewinde Thread	Ca. Maße Approx. Dimensions				Bemerkungen Notes	Bestellzeichen Order-Code
PN	D1	G	L1	L2	SW1	SW2		
500	6	M 12 x 1,5	51,0	36,0	12	14	DA-DKOL-06-SC	
500	8	M 14 x 1,5	51,0	36,0	14	17	DA-DKOL-08-SC	
500	10	M 16 x 1,5	51,0	36,0	17	19	DA-DKOL-10-SC	
400	12	M 18 x 1,5	51,0	36,0	19	22	DA-DKOL-12-SC	
400	15	M 22 x 1,5	51,0	36,0	24	27	DA-DKOL-15-SC	
400	18	M 26 x 1,5	52,0	36,0	27	32	DA-DKOL-18-SC	
250	22	M 30 x 2	56,0	40,0	32	36	DA-DKOL-22-SC	
250	28	M 36 x 2	57,0	40,0	41	41	DA-DKOL-28-SC	
250	35	M 45 x 2	72,0	50,0	46	50	DA-DKOL-35-SC	
250	42	M 52 x 2	83,0	60,0	55	60	DA-DKOL-42-SC	

Reihe / Series S

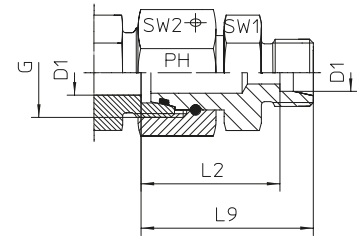
Druck Pressure	Rohr A.D. Tube O.D.	Gewinde Thread	Ca. Maße Approx. Dimensions				Bemerkungen Notes	Bestellzeichen Order-Code
PN	D1	G	L1	L2	SW1	SW2		
800	6	M 14 x 1,5	51,0	36,0	14	17	DA-DKOS-06-SC	
800	8	M 16 x 1,5	51,0	36,0	17	19	DA-DKOS-08-SC	
800	10	M 18 x 1,5	52,0	36,0	19	22	DA-DKOS-10-SC	
630	12	M 20 x 1,5	52,0	36,0	22	24	DA-DKOS-12-SC	
630	14	M 22 x 1,5	58,0	40,0	24	27	DA-DKOS-14-SC	
630	16	M 24 x 1,5	58,0	40,0	27	30	DA-DKOS-16-SC	
420	20	M 30 x 2	68,0	46,0	32	36	DA-DKOS-20-SC	
420	25	M 36 x 2	74,0	50,0	41	46	DA-DKOS-25-SC	
420	30	M 42 x 2	83,0	56,0	46	50	DA-DKOS-30-SC	
420	38	M 52 x 2	91,0	60,0	55	60	DA-DKOS-38-SC	

# DA - DISTANZADAPTER

## DA - DISTANCE - ADAPTORS

Mit Dichtkegel und O-Ring (DKO) - FPM  
Passend in Bohrungsform W DIN 3861

With Taper and O-ring - FPM  
For Type of Port End W DIN 3861



### Reihe / Series L

Druck Pressure	Rohr A.D. Tube O.D.	Gewinde Thread	Ca. Maße Approx. Dimensions				Bemerkungen Notes	Bestellzeichen Order-Code
PN	D1	G	L2	L9	SW1	SW2		
500	6	M 12 x 1,5	36,0	43,0	12,0	14,0	DA-DKOL-06-OMD	
500	8	M 14 x 1,5	36,0	43,0	14,0	17,0	DA-DKOL-08-OMD	
500	10	M 16 x 1,5	36,0	43,0	17,0	19,0	DA-DKOL-10-OMD	
400	12	M 18 x 1,5	36,0	43,0	19,0	22,0	DA-DKOL-12-OMD	
400	15	M 22 x 1,5	36,0	43,0	24,0	27,0	DA-DKOL-15-OMD	
400	18	M 26 x 1,5	36,0	43,5	27,0	32,0	DA-DKOL-18-OMD	
250	22	M 30 x 2	40,0	47,5	32,0	36,0	DA-DKOL-22-OMD	
250	28	M 36 x 2	40,0	47,5	41,0	41,0	DA-DKOL-28-OMD	
250	35	M 45 x 2	50,0	60,5	46,0	50,0	DA-DKOL-35-OMD	
250	42	M 52 x 2	60,0	71,0	55,0	60,0	DA-DKOL-42-OMD	

### Reihe / Series S

Druck Pressure	Rohr A.D. Tube O.D.	Gewinde Thread	Ca. Maße Approx. Dimensions				Bemerkungen Notes	Bestellzeichen Order-Code
PN	D1	G	L2	L9	SW1	SW2		
800	6	M 14 x 1,5	36,0	43,0	14,0	17,0	DA-DKOS-06-OMD	
800	8	M 16 x 1,5	36,0	43,0	17,0	19,0	DA-DKOS-08-OMD	
800	10	M 18 x 1,5	36,0	43,5	19,0	22,0	DA-DKOS-10-OMD	
630	12	M 20 x 1,5	36,0	43,5	22,0	24,0	DA-DKOS-12-OMD	
630	14	M 22 x 1,5	40,0	48,0	24,0	27,0	DA-DKOS-14-OMD	
630	16	M 24 x 1,5	40,0	48,5	27,0	30,0	DA-DKOS-16-OMD	
420	20	M 30 x 2	46,0	56,5	32,0	36,0	DA-DKOS-20-OMD	
420	25	M 36 x 2	50,0	62,0	41,0	46,0	DA-DKOS-25-OMD	
420	30	M 42 x 2	56,0	69,5	46,0	50,0	DA-DKOS-30-OMD	
420	38	M 52 x 2	60,0	76,0	55,0	60,0	DA-DKOS-38-OMD	