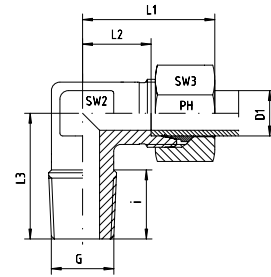




Winkel-Einschraubverschraubungen  
LL- und L-Reihe  
Einschraubgewinde:  
Whitworth-Rohrgewinde - Kegelig

Stud Elbows  
LL- and L-Series  
Thread: BSP - Taper



Reihe / Series LL

Druck Pressure	Rohr A.D. Tube O.D.	Gewinde Thread	Ca. Maße Approx. Dimensions							Bestellzeichen Order-Code	Brutto-Preis Gross-Price
PN	D1	G	L1	L2	L3	i	SW2	SW3		Euro (€)	
100	4	R 1/8" keg	21,0	11,0	17,0	8,0	9	10	WE-LL-04-R 1/8"-k		
100	6	R 1/8" keg	21,0	9,5	17,0	8,0	9	12	WE-LL-06-R 1/8"-k		
100	8	R 1/8" keg	23,0	11,5	20,0	8,0	12	14	WE-LL-08-R 1/8"-k		

Reihe / Series L

Druck Pressure	Rohr A.D. Tube O.D.	Gewinde Thread	Ca. Maße Approx. Dimensions							Bestellzeichen Order-Code	Brutto-Preis Gross-Price
PN	D1	G	L1	L2	L3	i	SW2	SW3		Euro (€)	
315	6	R 1/8" keg	27,0	12,0	20,0	8,0	12	14	WE-L-06-R 1/8"-k		
315	6	R 1/4" keg	27,0	12,0	26,0	12,0	12	14	WE-L-06-R 1/4"-k		
315	6	R 3/8" keg	30,0	15,0	27,0	12,0	14	14	WE-L-06-R 3/8"-k		
315	6	R 1/2" keg	30,5	15,5	30,0	14,0	17	14	WE-L-06-R 1/2"-k		
315	8	R 1/8" keg	29,0	14,0	26,0	8,0	12	17	WE-L-08-R 1/8"-k		
315	8	R 1/4" keg	29,0	14,0	26,0	12,0	12	17	WE-L-08-R 1/4"-k		
315	8	R 3/8" keg	32,0	15,0	28,0	12,0	14	17	WE-L-08-R 3/8"-k		
315	8	R 1/2" keg	34,5	19,5	30,0	14,0	17	17	WE-L-08-R 1/2"-k		
315	10	R 1/8" keg	31,5	15,0	27,0	8,0	14	19	WE-L-10-R 1/8"-k		
315	10	R 1/4" keg	30,0	15,0	27,0	12,0	14	19	WE-L-10-R 1/4"-k		
315	10	R 3/8" keg	30,0	15,0	28,0	12,0	14	19	WE-L-10-R 3/8"-k		
315	10	R 1/2" keg	37,0	21,0	33,0	14,0	17	19	WE-L-10-R 1/2"-k		
315	12	R 1/8" keg	32,0	17,5	27,0	8,0	17	22	WE-L-12-R 1/8"-k		
315	12	R 1/4" keg	32,0	17,5	27,0	12,0	17	22	WE-L-12-R 1/4"-k		
315	12	R 3/8" keg	32,0	17,5	28,0	12,0	17	22	WE-L-12-R 3/8"-k		
315	12	R 1/2" keg	32,0	17,5	32,5	14,0	17	22	WE-L-12-R 1/2"-k		
315	15	R 1/4" keg	36,0	21,0	32,0	12,0	19	27	WE-L-15-R 1/4"-k		
315	15	R 3/8" keg	36,0	21,0	32,5	12,0	19	27	WE-L-15-R 3/8"-k		
315	15	R 1/2" keg	36,0	21,0	34,0	14,0	19	27	WE-L-15-R 1/2"-k		
160	15	R 3/4" keg	36,0	21,0	42,0	16,0	24	27	WE-L-15-R 3/4"-k		
315	18	R 3/8" keg	40,0	23,5	36,5	12,0	24	32	WE-L-18-R 3/8"-k		
315	18	R 1/2" keg	40,0	23,5	36,0	14,0	24	32	WE-L-18-R 1/2"-k		
160	18	R 3/4" keg	38,5	22,0	41,0	16,0	24	32	WE-L-18-R 3/4"-k		
160	22	R 1/2" keg	44,0	27,5	41,0	14,0	27	36	WE-L-22-R 1/2"-k		
160	22	R 3/4" keg	44,0	27,5	41,0	16,0	27	36	WE-L-22-R 3/4"-k		
160	28	R 1" keg	51,5	30,5	47,0	20,0	36	41	WE-L-28-R 1"-k		
160	35	R 1 1/4" keg	59,5	33,0	56,0	26,0	41	50	WE-L-35-R 1 1/4"-k		

# WE - WINKEL - EINSCHRAUB - VERSCHRAUBUNGEN

WE - MALE - STUD - ELBOWS



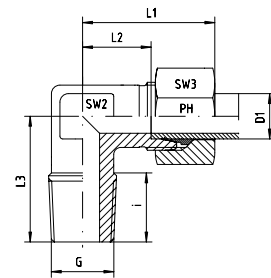
EDELSTAHL / STAINLESS STEEL  
VERBINDUNGSTECHNIK  
FLUID CONNECTORS

Winkel-Einschraubverschraubungen  
S-Reihe  
Einschraubgewinde:  
Whitworth-Rohrgewinde - Kegelig

(1) Die angegebenen Druckstufen sind nur gültig,  
wenn die Einschraublöcher mit kegeligem Gewinde  
vorhanden sind.

Stud Elbows  
S-Series  
Thread: BSP - Taper

(1) The pressure rates are only valid, if the female  
parts are with tapered threads, too.



## Reihe / Series S

Druck Pressure	Rohr A.D. Tube O.D.	Gewinde Thread	Ca. Maße Approx. Dimensions						Bestellzeichen Order-Code	Brutto-Preis Gross-Price
			L1	L2	L3	i	SW2	SW3		
(1) PN	D1	G	L1	L2	L3	i	SW2	SW3		Euro (€)
630	6	R 1/8" keg	29,5	15,0	25,0	8,0	12	17	WE-S-06-R 1/8"-k	
630	6	R 1/4" keg	31,0	16,5	26,0	12,0	12	17	WE-S-06-R 1/4"-k	
630	6	R 3/8" keg	32,0	17,5	27,0	12,0	14	17	WE-S-06-R 3/8"-k	
630	6	R 1/2" keg	34,0	19,0	33,0	14,0	17	17	WE-S-06-R 1/2"-k	
630	8	R 1/8" keg	32,0	17,0		8,0	14	19	WE-S-08-R 1/8"-k	*
630	8	R 1/4" keg	32,0	17,0	27,0	12,0	14	19	WE-S-08-R 1/4"-k	
630	8	R 3/8" keg	33,0	18,0	28,0	12,0	14	19	WE-S-08-R 3/8"-k	
630	8	R 1/2" keg	38,0	23,0	33,0	14,0	17	19	WE-S-08-R 1/2"-k	
630	10	R 1/8" keg	34,0	17,5	28,0	8,0	17	22	WE-S-10-R 1/8"-k	*
630	10	R 1/4" keg	34,0	17,5	28,0	12,0	17	22	WE-S-10-R 1/4"-k	
630	10	R 3/8" keg	34,0	17,5	28,0	12,0	17	22	WE-S-10-R 3/8"-k	
630	10	R 1/2" keg	39,0	22,5	32,0	14,0	17	22	WE-S-10-R 1/2"-k	
630	12	R 1/4" keg	38,0	21,5	27,0	12,0	17	24	WE-S-12-R 1/4"-k	
630	12	R 3/8" keg	38,0	21,5	28,0	12,0	17	24	WE-S-12-R 3/8"-k	
630	12	R 1/2" keg	39,0	22,5	32,0	14,0	17	24	WE-S-12-R 1/2"-k	
630	14	R 3/8" keg	40,0	22,0	30,0	12,0	19	27	WE-S-14-R 3/8"-k	
630	14	R 1/2" keg	40,0	22,0	32,0	14,0	19	27	WE-S-14-R 1/2"-k	
400	16	R 3/8" keg	43,0	24,5	32,0	12,0	24	30	WE-S-16-R 3/8"-k	
400	16	R 1/2" keg	43,0	24,5	32,0	14,0	24	30	WE-S-16-R 1/2"-k	
160	16	R 3/4" keg	43,0	24,5	41,0	16,0	24	30	WE-S-16-R 3/4"-k	
400	20	R 1/2" keg	48,0	26,5	42,0	14,0	27	36	WE-S-20-R 1/2"-k	
400	20	R 3/4" keg	48,0	26,5	42,0	16,0	27	36	WE-S-20-R 3/4"-k	

\*Preis auf Anfrage/\*Price on request