

EVGE - GERADE - AUFSTECKSTUTZEN

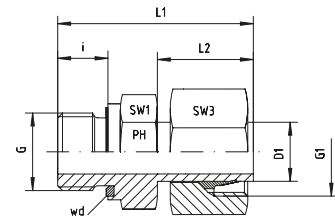
EVGE - MALE - STUD - STANDPIPE - CONNECTORS



EDELSTAHL / STAINLESS STEEL
VERBINDUNGSTECHNIK
FLUID CONNECTORS

Vormontiert

Einschraubgewinde:
Whitworth-Rohrgewinde - Zylindrisch
wd = Abdichtung durch Profildichtung - FPM
Anschluss D1 ist vormontiert. Die Fertigmontage erfolgt im Stutzen mit ca. 1/2 Umdrehung der Überwurfmutter über den Punkt des deutlich fühlbaren Kraftanstieges.



Pre-Assembled

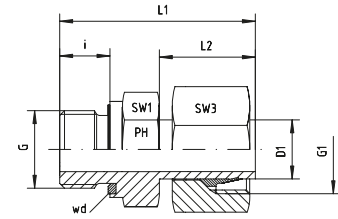
Thread: BSP - Parallel
wd = Sealing by an Elastomer Profiled Ring - FPM
Port D1 is pre-assembled. Final assembly in appropriate body with approx. 1/2 turn beyond the point of clearly perceptible resistance.

Reihe / Series L

| Druck Pressure | Rohr A.D. Tube O.D. | Gewinde Thread | Ca. Maße Approx. Dimensions | | | | | | Bestellzeichen Order-Code | Brutto-Preis Gross-Price |
|-------------------|------------------------|-------------------|--------------------------------|------|------|-----|-----|-----------------------|------------------------------|-----------------------------|
| PN | D1 | G | L1 | L2 | i | SW1 | SW3 | | Euro (€) | |
| 315 | 6 | G 1/8" | 32,5 | 19,0 | 8,0 | 14 | 14 | EVGE-L-06-G 1/8"-wd | | |
| 315 | 6 | G 1/4" | 39,5 | 20,5 | 12,0 | 19 | 14 | EVGE-L-06-G 1/4"-wd | | |
| 315 | 8 | G 1/4" | 41,0 | 20,5 | 12,0 | 19 | 17 | EVGE-L-08-G 1/4"-wd | | |
| 315 | 8 | G 3/8" | 42,5 | 20,5 | 12,0 | 22 | 17 | EVGE-L-08-G 3/8"-wd | | |
| 315 | 10 | G 1/4" | 39,5 | 20,5 | 12,0 | 19 | 19 | EVGE-L-10-G 1/4"-wd | | |
| 315 | 10 | G 3/8" | 44,0 | 21,0 | 12,0 | 22 | 19 | EVGE-L-10-G 3/8"-wd | | |
| 315 | 10 | G 1/2" | 47,0 | 21,0 | 14,0 | 27 | 19 | EVGE-L-10-G 1/2"-wd | | |
| 315 | 12 | G 1/4" | 42,0 | 21,5 | 12,0 | 19 | 22 | EVGE-L-12-G 1/4"-wd | | |
| 315 | 12 | G 3/8" | 45,0 | 22,0 | 12,0 | 22 | 22 | EVGE-L-12-G 3/8"-wd | | |
| 315 | 12 | G 1/2" | 48,5 | 22,5 | 14,0 | 27 | 22 | EVGE-L-12-G 1/2"-wd | | |
| 315 | 15 | G 3/8" | 45,5 | 22,5 | 12,0 | 22 | 27 | EVGE-L-15-G 3/8"-wd | | |
| 315 | 15 | G 1/2" | 46,0 | 23,0 | 14,0 | 27 | 27 | EVGE-L-15-G 1/2"-wd | | |
| 315 | 18 | G 3/8" | 44,0 | 23,5 | 12,0 | 22 | 32 | EVGE-L-18-G 3/8"-wd | | |
| 315 | 18 | G 1/2" | 47,0 | 24,0 | 14,0 | 27 | 32 | EVGE-L-18-G 1/2"-wd | | |
| 160 | 18 | G 3/4" | 52,0 | 24,0 | 16,0 | 32 | 32 | EVGE-L-18-G 3/4"-wd | | |
| 160 | 22 | G 3/8" | 46,0 | 24,5 | 12,0 | 24 | 36 | EVGE-L-22-G 3/8"-wd | | |
| 160 | 22 | G 1/2" | 50,5 | 24,5 | 14,0 | 27 | 36 | EVGE-L-22-G 1/2"-wd | | |
| 160 | 22 | G 3/4" | 50,5 | 24,5 | 16,0 | 32 | 36 | EVGE-L-22-G 3/4"-wd | | |
| 160 | 22 | G 1" | 53,0 | 24,5 | 18,0 | 41 | 36 | EVGE-L-22-G 1"-wd | * | |
| 160 | 28 | G 3/4" | 52,5 | 25,5 | 16,0 | 32 | 41 | EVGE-L-28-G 3/4"-wd | | |
| 160 | 28 | G 1" | 54,0 | 25,5 | 18,0 | 41 | 41 | EVGE-L-28-G 1"-wd | | |
| 160 | 35 | G 1 1/4" | 63,5 | 32,0 | 20,0 | 50 | 50 | EVGE-L-35-G 1 1/4"-wd | | |
| 160 | 42 | G 1 1/2" | 70,0 | 32,0 | 22,0 | 55 | 60 | EVGE-L-42-G 1 1/2"-wd | | |

*Preis auf Anfrage/*Price on request

Vormontiert
Einschraubgewinde:
Whitworth-Rohrgewinde - Zylindrisch
wd = Abdichtung durch Profildichtung - FPM
Anschluss D1 ist vormontiert. Die Fertigmontage erfolgt im Stutzen mit ca. 1/2 Umdrehung der Überwurfmutter über den Punkt des deutlich fühlbaren Kraftanstieges.



Pre-Assembled
Thread: BSP - Parallel
wd = Sealing by an Elastomer Profiled Ring - FPM
Port D1 is pre-assembled. Final assembly in appropriate body with approx. 1/2 turn beyond the point of clearly perceptible resistance.

Reihe / Series S

| Druck Pressure | Rohr A.D. Tube O.D. | Gewinde Thread | Ca. Maße Approx. Dimensions | | | Bestellzeichen Order-Code | | | Brutto-Preis Gross-Price |
|-------------------|------------------------|-------------------|--------------------------------|------|------|------------------------------|-----|-----------------------|-----------------------------|
| PN | D1 | G | L1 | L2 | i | SW1 | SW3 | | Euro (€) |
| 630 | 6 | G 1/8" | 32,5 | 19,0 | 8,0 | 14 | 17 | EVGE-S-06-G 1/8"-wd | |
| 630 | 6 | G 1/4" | 39,5 | 20,5 | 12,0 | 19 | 17 | EVGE-S-06-G 1/4"-wd | |
| 630 | 8 | G 1/4" | 41,0 | 20,5 | 12,0 | 19 | 19 | EVGE-S-08-G 1/4"-wd | |
| 630 | 8 | G 3/8" | 42,5 | 20,5 | 12,0 | 22 | 19 | EVGE-S-08-G 3/8"-wd | |
| 630 | 10 | G 1/4" | 39,5 | 20,5 | 12,0 | 19 | 22 | EVGE-S-10-G 1/4"-wd | |
| 630 | 10 | G 3/8" | 44,0 | 21,0 | 12,0 | 22 | 22 | EVGE-S-10-G 3/8"-wd | |
| 630 | 10 | G 1/2" | 47,0 | 21,0 | 14,0 | 27 | 22 | EVGE-S-10-G 1/2"-wd | |
| 630 | 12 | G 1/4" | 42,0 | 21,5 | 12,0 | 19 | 24 | EVGE-S-12-G 1/4"-wd | |
| 630 | 12 | G 3/8" | 45,0 | 22,0 | 12,0 | 22 | 24 | EVGE-S-12-G 3/8"-wd | |
| 630 | 12 | G 1/2" | 48,5 | 22,5 | 14,0 | 27 | 24 | EVGE-S-12-G 1/2"-wd | |
| 630 | 14 | G 1/2" | 51,0 | 24,5 | 14,0 | 27 | 27 | EVGE-S-14-G 1/2"-wd | |
| 400 | 16 | G 3/8" | 48,5 | 26,0 | 12,0 | 22 | 30 | EVGE-S-16-G 3/8"-wd | |
| 400 | 16 | G 1/2" | 51,0 | 26,0 | 14,0 | 27 | 30 | EVGE-S-16-G 1/2"-wd | |
| 400 | 16 | G 3/4" | 54,5 | 26,0 | 16,0 | 32 | 30 | EVGE-S-16-G 3/4"-wd | |
| 400 | 20 | G 1/2" | 56,5 | 29,5 | 14,0 | 27 | 36 | EVGE-S-20-G 1/2"-wd | |
| 400 | 20 | G 3/4" | 59,0 | 29,0 | 16,0 | 32 | 36 | EVGE-S-20-G 3/4"-wd | |
| 400 | 25 | G 3/4" | 63,0 | 33,0 | 16,0 | 32 | 46 | EVGE-S-25-G 3/4"-wd | |
| 400 | 25 | G 1" | 66,0 | 33,0 | 18,0 | 41 | 46 | EVGE-S-25-G 1"-wd | |
| 400 | 30 | G 1 1/4" | 71,0 | 34,0 | 20,0 | 50 | 50 | EVGE-S-30-G 1 1/4"-wd | |
| 315 | 38 | G 1 1/2" | 83,5 | 40,0 | 22,0 | 55 | 60 | EVGE-S-38-G 1 1/2"-wd | |