

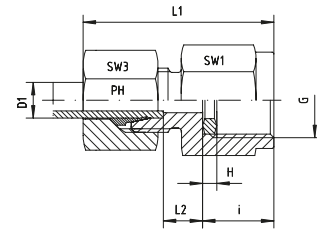
MV - MANOMETER - VERSCHRAUBUNGEN

MV - PRESSURE - GAUGE - COUPLINGS



Manometer-Verschraubungen
Mit Dichtkantenring - DKRi
Innengewinde: Whitworth-Rohrgewinde - Zylindrisch

Gauge Couplings
With Metal Sealing Ring - DKRi
Internal Thread: BSP - Female - Parallel



Reihe / Series L

Druck Pressure	Rohr A.D. Tube O.D.	Gewinde Thread	Ca. Maße Approx. Dimensions						Bestellzeichen Order-Code	Brutto-Preis Gross-Price
PN	D1	G	H	L1	L2	i	SW1	SW3		Euro (€)
315	6	G 1/4"	4,5	37,0	7,5	14,5	19	14	MV-L-06-G 1/4"	
315	6	G 1/2"	5,0	46,0	9,0	20,0	27	14	MV-L-06-G 1/2"	
315	8	G 1/4"	4,5	37,0	7,5	14,5	19	17	MV-L-08-G 1/4"	
315	8	G 1/2"	5,0	46,0	9,0	20,0	27	17	MV-L-08-G 1/2"	
315	10	G 1/4"	4,5	38,0	8,5	14,5	19	19	MV-L-10-G 1/4"	
315	10	G 1/2"	5,0	47,0	9,5	20,0	27	19	MV-L-10-G 1/2"	
315	12	G 1/4"	4,5	38,0	8,5	14,5	19	22	MV-L-12-G 1/4"	
315	12	G 1/2"	5,0	48,0	10,0	20,0	27	22	MV-L-12-G 1/2"	

Reihe / Series S

Druck Pressure	Rohr A.D. Tube O.D.	Gewinde Thread	Ca. Maße Approx. Dimensions						Bestellzeichen Order-Code	Brutto-Preis Gross-Price
PN	D1	G	H	L1	L2	i	SW1	SW3		Euro (€)
630	6	G 1/2"	5,0	46,0	11,0	20,0	27	17	MV-S-06-G 1/2"	
630	8	G 1/4"	4,5	40,0	9,5	14,5	19	19	MV-S-08-G 1/4"	
630	8	G 1/2"	5,0	46,0	11,0	20,0	27	19	MV-S-08-G 1/2"	
630	10	G 1/4"	4,5	40,5	9,0	14,5	19	22	MV-S-10-G 1/4"	
630	10	G 1/2"	5,0	47,0	10,5	20,0	27	22	MV-S-10-G 1/2"	
630	12	G 1/4"	4,5	41,0	8,0	14,5	22	24	MV-S-12-G 1/4"	
630	12	G 1/2"	5,0	47,0	10,5	20,0	27	24	MV-S-12-G 1/2"	
630	14	G 1/2"	5,0	49,5	12,0	20,0	27	27	MV-S-14-G 1/2"	