

EW - EINSTELLBARE - WINKEL - VERSCHRAUBUNGEN

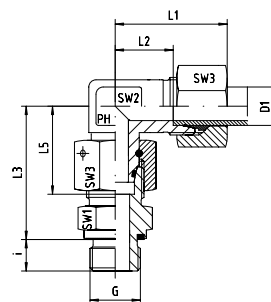
EW - ADJUSTABLE - ELBOWS



EDELSTAHL / STAINLESS STEEL
VERBINDUNGSTECHNIK
FLUID CONNECTORS

Einstellbare Winkel-Verschraubungen mit Dichtkegel und O-Ring FPM
Rohrseitig Schneidringanschluss
Einschraubgewinde:
Whitworth-Rohrgewinde - Zylindrisch
wd = Abdichtung durch Profildichtung - FPM

With Taper and O-ring - FPM
Cutting Ring Connection at the Tube Connection side
Thread: BSP - Parallel
wd = Sealing by an Elastomer Profiled Ring - FPM



Reihe / Series L

| Druck Pressure | Rohr A.D. Tube O.D. | Gewinde Thread | Ca. Maße Approx. Dimensions | | | | | | | Bestellzeichen Order-Code | | | |
|-------------------|------------------------|-------------------|--------------------------------|------|------|------|------|-----|-----|------------------------------|------------------------|--|--|
| PN | D1 | G | L1 | L2 | L3 | L5 | i | SW1 | SW2 | SW3 | | | |
| 500 | 6 | G 1/8" | 27,0 | 12,0 | 34,5 | 26,0 | 8,0 | 14 | 12 | 14 | EW-DKOL-06-G 1/8"-wd | | |
| 500 | 8 | G 1/4" | 29,0 | 14,0 | 37,5 | 27,5 | 12,0 | 17 | 12 | 17 | EW-DKOL-08-G 1/4"-wd | | |
| 500 | 10 | G 1/4" | 30,0 | 15,0 | 40,0 | 29,0 | 12,0 | 19 | 14 | 19 | EW-DKOL-10-G 1/4"-wd | | |
| 400 | 12 | G 1/4" | 32,0 | 17,0 | 42,0 | 29,5 | 12,0 | 19 | 17 | 22 | EW-DKOL-12-G 1/4"-wd | | |
| 400 | 12 | G 3/8" | 32,0 | 17,0 | 42,0 | 29,5 | 12,0 | 22 | 17 | 22 | EW-DKOL-12-G 3/8"-wd | | |
| 400 | 12 | G 1/2" | 32,0 | 17,0 | 43,0 | 29,5 | 14,0 | 27 | 17 | 22 | EW-DKOL-12-G 1/2"-wd | | |
| 400 | 15 | G 1/2" | 36,0 | 21,0 | 46,0 | 32,5 | 14,0 | 27 | 19 | 27 | EW-DKOL-15-G 1/2"-wd | | |
| 400 | 18 | G 1/2" | 40,0 | 23,5 | 50,0 | 35,5 | 14,0 | 27 | 24 | 32 | EW-DKOL-18-G 1/2"-wd | | |
| 250 | 22 | G 3/4" | 44,0 | 27,5 | 55,0 | 38,5 | 16,0 | 32 | 27 | 36 | EW-DKOL-22-G 3/4"-wd | | |
| 250 | 28 | G 1" | 47,0 | 30,5 | 59,0 | 41,5 | 18,0 | 41 | 36 | 41 | EW-DKOL-28-G 1"-wd | | |
| 250 | 35 | G 1 1/4" | 56,0 | 34,5 | 68,5 | 51,0 | 20,0 | 50 | 41 | 50 | EW-DKOL-35-G 1 1/4"-wd | | |
| 250 | 42 | G 1 1/2" | 63,0 | 40,0 | 75,0 | 56,0 | 22,0 | 55 | 50 | 60 | EW-DKOL-42-G 1 1/2"-wd | | |

Reihe / Series S

| Druck Pressure | Rohr A.D. Tube O.D. | Gewinde Thread | Ca. Maße Approx. Dimensions | | | | | | | Bestellzeichen Order-Code | | | |
|-------------------|------------------------|-------------------|--------------------------------|------|------|------|------|-----|-----|------------------------------|------------------------|--|--|
| PN | D1 | G | L1 | L2 | L3 | L5 | i | SW1 | SW2 | SW3 | | | |
| 800 | 6 | G 1/4" | 31,0 | 16,0 | 40,0 | 27,0 | 12,0 | 19 | 12 | 17 | EW-DKOS-06-G 1/4"-wd | | |
| 800 | 8 | G 1/4" | 32,0 | 17,0 | 42,5 | 27,5 | 12,0 | 19 | 14 | 19 | EW-DKOS-08-G 1/4"-wd | | |
| 800 | 10 | G 3/8" | 34,0 | 17,5 | 45,0 | 30,0 | 12,0 | 22 | 17 | 22 | EW-DKOS-10-G 3/8"-wd | | |
| 630 | 12 | G 3/8" | 38,0 | 21,5 | 48,0 | 31,0 | 12,0 | 22 | 17 | 24 | EW-DKOS-12-G 3/8"-wd | | |
| 630 | 12 | G 1/2" | 38,0 | 21,5 | 49,0 | 31,0 | 14,0 | 27 | 17 | 24 | EW-DKOS-12-G 1/2"-wd | | |
| 630 | 14 | G 1/2" | 40,0 | 22,0 | 54,0 | 35,0 | 14,0 | 27 | 19 | 27 | EW-DKOS-14-G 1/2"-wd | | |
| 630 | 16 | G 1/2" | 43,0 | 24,5 | 55,0 | 36,5 | 14,0 | 27 | 24 | 30 | EW-DKOS-16-G 1/2"-wd | | |
| 420 | 20 | G 3/4" | 48,0 | 26,5 | 65,0 | 44,5 | 16,0 | 32 | 27 | 36 | EW-DKOS-20-G 3/4"-wd | | |
| 420 | 25 | G 1" | 54,0 | 30,0 | 73,0 | 50,0 | 18,0 | 41 | 36 | 46 | EW-DKOS-25-G 1"-wd | | |
| 420 | 30 | G 1 1/4" | 62,0 | 35,5 | 78,5 | 55,0 | 20,0 | 50 | 41 | 50 | EW-DKOS-30-G 1 1/4"-wd | | |
| 420 | 38 | G 1 1/2" | 72,0 | 41,0 | 89,0 | 63,0 | 22,0 | 55 | 50 | 60 | EW-DKOS-38-G 1 1/2"-wd | | |