



EDELSTAHL / STAINLESS STEEL
VERBINDUNGSTECHNIK
FLUID CONNECTORS

Dichtkegel-Verschraubungen mit 24°-Kegel und O-Ring – FPM

Cone Sealing Couplings with 24°-Cone and O-ring – FPM





DICHTKEGEL-Verschraubungen mit 24°-Kegel und O-Ring - FPM - DIN EN ISO 8434-1

CONE SEALING COUPLINGS WITH 24°-CONE AND O-RING - FPM - DIN EN ISO 8434-1



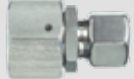

Produktgruppen	Product-Groups	Seite / Page	
Allgemeine Informationen	General information		
Montageanleitung	Assembly Instruction	9.4-9.5	
O-Ringe für Dichtkegel - Verschraubungen	Soft - Seals for Cone - Sealing - Couplings	9.6	
GV - Gerade - Verschraubungen GV - DKO - DKO	GV - Staright - Swivel - Unions GV - DKO - DKO	9.7	
GVR - Gerade - Reduzierungen GVR - DKO - L - DKO - L GVR - DKO - S - DKO - S GVR - DKO - L - DKO - S	GVR - Straight - Swifel - Reducers GVR - DKO - L - DKO - L GVR - DKO - S - DKO - S GVR - DKO - L - DKO - S	9.8 9.9 9.10	
EW - Einstellbare - Winkel - Verschraubungen EW - Standard EW - SC EW - OMD EW - Whitworth - Zylindrisch - Standard EW - Whitworth - Zylindrisch - SC EW - Whitworth - Zylindrisch - OMD EW - Metrisch Feingewinde - Zyl. - Standard EW - Metrisch Feingewinde - Zyl. - SC EW - Metrisch Feingewinde - Zyl. - OMD	EW - Adjustable - Elbows EW - Standard EW - SC EW - OMD EW - BSP - Parallel - Standard EW - BSP - Parallel - SC EW - BSP - Parallel - OMD EW - Metric - Standard EW - Metric - Standard EW - Metric - OMD	9.11 9.12 9.13 9.14 9.15 9.16 9.17 9.18 9.19	
EV - Einstellbare - 45° - Winkel - Verschraubungen EV - L- und S-Reihe - Standard EV - L- und S-Reihe - SC EV - L- und S-Reihe - OMD	EV - Adjustable - 45° - Elbows EV - L- and S-Series - Standard EV - L- and S-Series - SC EV - L- and S-Series - OMD	9.20 9.21 9.22	

Standard = Überwurfmutter blank / Tube nuts are supplied unplated
SC = Überwurfmutter bis Größe 12-S ist gleitbeschichtet / Tube nuts until size 12-L are supplied chemical plated
= Überwurfmutter ab Größe 12-S ist mit versilbertem Gewinde / Tube nuts from size 12-S are supplied with silver plated thread
OMD = Verschraubung ohne Überwurfmutter und Schneidring am Außengewinde / Couplings are supplied without nut and cutting ring at male thread



DICHTKEGEL-Verschraubungen mit 24°-Kegel und O-Ring - FPM - DIN EN ISO 8434-1

CONE SEALING COUPLINGS WITH 24°-CONE AND O-RING - FPM - DIN EN ISO 8434-1

Produktgruppen	Product-Groups	Seite / Page	
ET - Einstellbare - T - Verschraubungen	ET - Adjustable - Branch - TEES		
ET - Standard	ET - Standard	9.23	
ET - SC	ET - SC	9.24	
ET - OMD	ET - OMD	9.25	
ET - Whitworth - Zylindrisch - Standard	ET - BSP - Parallel - Standard	9.26	
ET - Whitworth - Zylindrisch - SC	ET - BSP - Parallel - SC	9.27	
ET - Whitworth - Zylindrisch - OMD	ET - BSP - Parallel - OMD	9.28	
ET - Metrisch Feingewinde - Zylindrisch - Standard	ET - Metric - Standard	9.29	
ET - Metrisch Feingewinde - Zylindrisch - SC	ET - Metric - SC	9.30	
ET - Metrisch Feingewinde - Zylindrisch - OMD	ET - Metric - OMD	9.31	
EL - Einstellbare - L - Verschraubungen	EL - Adjustable - Run - TEES		
EL - Standard	EL - Standard	9.32	
EL - SC	EL - SC	9.33	
EL - OMD	EL - OMD	9.34	
EL - Whitworth - Zylindrisch - Standard	EL - BSP - Parallel - Standard	9.35	
EL - Whitworth - Zylindrisch - SC	EL - BSP - Parallel - SC	9.36	
EL - Whitworth - Zylindrisch - OMD	EL - BSP - Parallel - OMD	9.37	
EL - Metr. Feingewinde - Zylindrisch - Standard	EL - Metric - Standard	9.38	
EL - Metr. Feingewinde - Zylindrisch - SC	EL - Metric - SC	9.39	
EL - Metr. Feingewinde - Zylindrisch - OMD	EL - Metric - OMD	9.40	
RED - Reduzier - Verschraubungen	RED - Reducing - Couplings		
RED - DKOL - Standard	RED - DKOL - Standard	9.41	
RED - DKOL - SC	RED - DKOL - SC	9.42	
RED - DKOL - OMD	RED - DKOL - OMD	9.43	
RED - DKOS - Standard	RED - DKOS - Standard	9.44	
RED - DKOS - SC	RED - DKOS - SC	9.45	
RED - DKOS - OMD	RED - DKOS - OMD	9.46	
EGE - Gerade - Einschraubstutzen	EGE - Swivel - Female- Male - Connectors		
EGE - Metrisch - Zylindrisch	EGE - Metric - Parallel	9.47	
EGE - Whitworth - Zylindrisch	EGE - BSP - Parallel	9.48	
EGE - NPT	EGE - NPT	9.50	

Standard = Überwurfmutter blank / Tube nuts are supplied unplated

SC = Überwurfmutter bis Größe 12-S ist gleitbeschichtet / Tube nuts until size 12-L are supplied chemical plated



= Überwurfmutter ab Größe 12-S ist mit versilbertem Gewinde / Tube nuts from size 12-S are supplied with silver plated thread

OMD = Verschraubung ohne Überwurfmutter und Schneidring am Außengewinde / Couplings are supplied without nut and cutting ring at male thread



DICHTKEGEL-Verschraubungen mit 24°-Kegel und O-Ring - FPM - DIN EN ISO 8434-1

CONE SEALING COUPLINGS WITH 24°-CONE AND O-RING - FPM - DIN EN ISO 8434-1

Produktgruppen	Product-Groups	Seite / Page	
MVE - Einstellbare - Manometer - Verschraubungen MVE - DKOL	MVE - Swivel - Pressure - Gauge - Connectors MVE - DKOL	9.51	
DA - Distanzadapter L- und S-Reihe DA - DKO - Standard	DA - Distance - Adaptors - L- and S-Series DA - DKO - Standard	9.52	
DA - DKO - SC	DA - DKO - SC	9.53	
DA - DKO - OMD	DA - DKO - OMD	9.54	

Standard = Überwurfmutter blank / Tube nuts are supplied unplated

SC = Überwurfmutter bis Größe 12-S ist gleitbeschichtet / Tube nuts until size 12-L are supplied chemical plated

= Überwurfmutter ab Größe 12-S ist mit versilbertem Gewinde / Tube nuts from size 12-S are supplied with silver plated thread

OMD = Verschraubung ohne Überwurfmutter und Schneidring am Außengewinde / Couplings are supplied without nut and cutting ring at male thread

Mit 24°-Kegel und O-Ring - FPM - DIN EN ISO 8434-1

1.

PH Dichtkegel-Verschraubungen müssen im dazugehörigen Verschraubungskörper endmontiert werden.



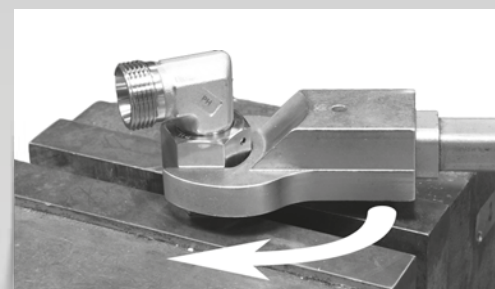
2.

Bei Edelstahl-Verschraubungen müssen die Gewinde geschmiert werden. Es handelt sich hierbei um spezielle Schmierstoffe für Edelstahl-Verschraubungen (siehe Kapitel 12).



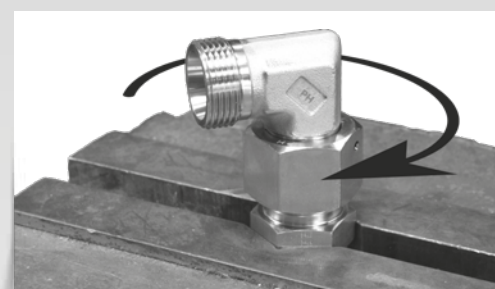
3.

Überwurfmutter von Hand bis zum fühlbaren Anschlag aufschrauben.



4.

Danach mit einer 1/4 Umdrehung festziehen (1 1/2 Schlüsselflächen).





With 24°-Cone and O-ring - FPM - DIN EN ISO 8434-1

1.

PH cone sealing couplings must be pre-assembled in the associated body.



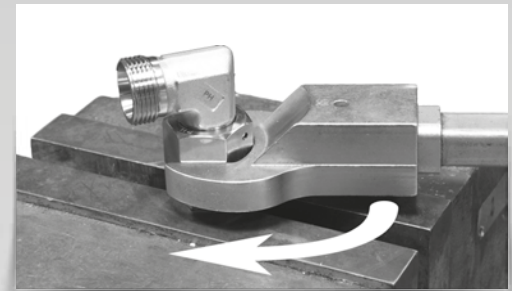
2.

Stainless steel fittings must be lubricated at the thread.
These are special lubricants for stainless steel fittings (see chapter 12).



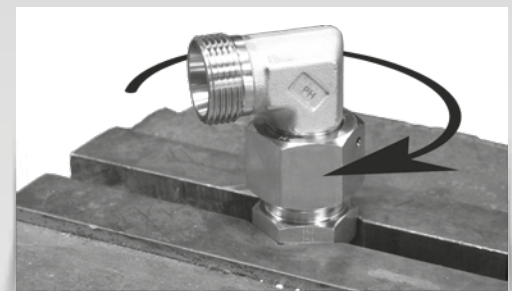
3.

Screw the nut by hand onto the body until stop is felt.



4.

Then tighten it with a 1/4 turn (1 1/2 spanner flat).

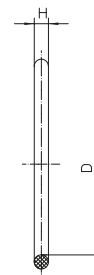


O-RINGE FÜR DICHTKEGEL - VERSCHRAUBUNGEN

SOFT - SEALS FOR CONE - SEALING - COUPLINGS

O-Ringe für Verschraubungen mit Dichtkegel
Material: FPM Shore-Härte ca. 90
Für Verschraubungen Typ: DA / EGE / EL / ET / EV / EW / GVO / MVE / RED
Auf Anfrage: NBR / EPDM

O-rings for taper couplings
Material: FPM
For Couplings typ: DA / EGE / EL / ET / EV / EW / GVO / MVE / RED
On Request: NBR / EPDM

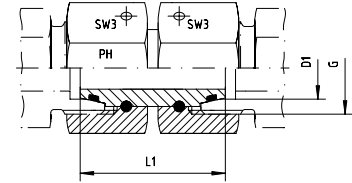


Reihe L Series L	D	H	Bemerkungen Notes
DKOL-06	4,5	1,3	
DKOL-08	6,0	1,5	
DKOL-10	8,0	1,5	
DKOL-12	10,0	1,5	
DKOL-15	12,0	2,0	
DKOL-18	15,0	2,0	
DKOL-22	20,0	2,0	
DKOL-28	25,0	2,0	
DKOL-35	32,0	2,5	
DKOL-42	38,0	2,5	

Reihe S Series S	D	H	Bemerkungen Notes
DKOS-06	4,5	1,3	
DKOS-08	6,0	1,5	
DKOS-10	8,0	1,5	
DKOS-12	10,0	1,5	
DKOS-14	12,0	2,0	
DKOS-16	13,0	2,0	
DKOS-20	16,3	2,4	
DKOS-25	21,3	2,4	
DKOS-30	25,3	2,4	
DKOS-38	33,3	2,4	

Mit Dichtkegel und O-Ring - FPM
 Passend in Bohrungsform W DIN 3861

With Taper and O-ring - FPM
 For Type of Port End W DIN 3861



Reihe / Series L

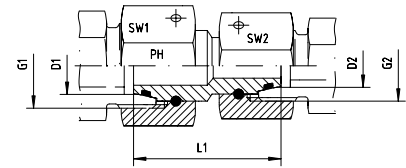
Druck Pressure	Rohr A.D. Tube O.D.	Gewinde Thread	Ca. Maße Approx. Dimensions		Bemerkungen Notes	Bestellzeichen Order-Code
PN	D1	G	L1	SW3		
500	6	M 12 x 1,5	33,0	14		GV-DKOL-06
500	8	M 14 x 1,5	33,7	17		GV-DKOL-08
500	10	M 16 x 1,5	34,5	19		GV-DKOL-10
400	12	M 18 x 1,5	35,0	22		GV-DKOL-12
400	15	M 22 x 1,5	39,0	27		GV-DKOL-15
400	18	M 26 x 1,5	38,0	32		GV-DKOL-18
250	22	M 30 x 2	43,0	36		GV-DKOL-22
250	28	M 36 x 2	46,0	41		GV-DKOL-28
250	35	M 45 x 2	47,0	50		GV-DKOL-35
250	42	M 52 x 2	52,0	60		GV-DKOL-42

Reihe / Series S

Druck Pressure	Rohr A.D. Tube O.D.	Gewinde Thread	Ca. Maße Approx. Dimensions		Bemerkungen Notes	Bestellzeichen Order-Code
PN	D1	G	L1	SW3		
800	6	M 14 x 1,5	33,0	17		GV-DKOS-06
800	8	M 16 x 1,5	36,0	19		GV-DKOS-08
800	10	M 18 x 1,5	36,0	22		GV-DKOS-10
630	12	M 20 x 1,5	38,0	24		GV-DKOS-12
630	14	M 22 x 1,5	38,0	27		GV-DKOS-14
630	16	M 24 x 1,5	39,0	30		GV-DKOS-16
420	20	M 30 x 2	46,5	36		GV-DKOS-20
420	25	M 36 x 2	47,5	46		GV-DKOS-25
420	30	M 42 x 2	52,0	50		GV-DKOS-30
420	38	M 52 x 2	52,5	60		GV-DKOS-38

Beide Seiten mit drehbarer Mutter - DKO
Mit Dichtkegel und O-Ring - FPM
Passend in Bohrungsform W DIN 3861

Both sides with Swivel Nut - DKO
With Taper and O-ring - FPM
For Type of Port End W DIN 3861



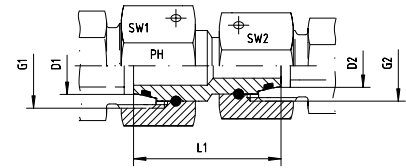
Reihe / Series L

Druck Pressure	Rohr A.D. Tube O.D.		Gewinde Thread		Ca. Maße Approx. Dimensions			Bemerkungen Notes	Bestellzeichen Order-Code
PN	D1	D2	G1	G2	L1	SW1	SW2		
500	8	6	M 14 x 1,5	M 12 x 1,5	31,0	17	14		GVR-DKO-08-L/06-L
500	10	6	M 16 x 1,5	M 12 x 1,5	34,0	19	14		GVR-DKO-10-L/06-L
500	10	8	M 16 x 1,5	M 14 x 1,5	33,0	19	17		GVR-DKO-10-L/08-L
400	12	6	M 18 x 1,5	M 12 x 1,5	34,0	22	14		GVR-DKO-12-L/06-L
400	12	8	M 18 x 1,5	M 14 x 1,5	34,0	22	17		GVR-DKO-12-L/08-L
400	12	10	M 18 x 1,5	M 16 x 1,5	33,0	22	19		GVR-DKO-12-L/10-L
400	15	8	M 22 x 1,5	M 14 x 1,5	37,0	27	17		GVR-DKO-15-L/08-L
400	15	10	M 22 x 1,5	M 16 x 1,5	38,0	27	19		GVR-DKO-15-L/10-L
400	15	12	M 22 x 1,5	M 18 x 1,5	35,0	27	22		GVR-DKO-15-L/12-L
400	18	10	M 26 x 1,5	M 16 x 1,5	36,3	32	19		GVR-DKO-18-L/10-L
400	18	12	M 26 x 1,5	M 18 x 1,5	38,0	32	22		GVR-DKO-18-L/12-L
400	18	15	M 26 x 1,5	M 22 x 1,5	43,0	32	27		GVR-DKO-18-L/15-L
250	22	12	M 30 x 2	M 18 x 1,5	42,0	36	22		GVR-DKO-22-L/12-L
250	22	15	M 30 x 2	M 22 x 1,5	43,5	36	27		GVR-DKO-22-L/15-L
250	22	18	M 30 x 2	M 26 x 1,5	43,0	36	32		GVR-DKO-22-L/18-L
250	28	15	M 36 x 2	M 22 x 1,5		41	27		GVR-DKO-28-L/15-L
250	28	18	M 36 x 2	M 26 x 1,5	46,0	41	32		GVR-DKO-28-L/18-L
250	28	22	M 36 x 2	M 30 x 2		41	36		GVR-DKO-28-L/22-L
250	35	18	M 45 x 2	M 26 x 1,5	44,0	50	32		GVR-DKO-35-L/18-L
250	35	22	M 45 x 2	M 30 x 2		50	36		GVR-DKO-35-L/22-L
250	35	28	M 45 x 2	M 36 x 2	46,5	50	41		GVR-DKO-35-L/28-L
250	42	22	M 52 x 2	M 30 x 2	47,0	60	36		GVR-DKO-42-L/22-L
250	42	28	M 52 x 2	M 36 x 2	47,5	60	41		GVR-DKO-42-L/28-L
250	42	35	M 52 x 2	M 45 x 2	52,0	60	50		GVR-DKO-42-L/35-L



Beide Seiten mit drehbarer Mutter - DKO
 Mit Dichtkegel und O-Ring - FPM
 Passend in Bohrungsform W DIN 3861

Both sides with Swivel Nut - DKO
 With Taper and O-ring - FPM
 For Type of Port End W DIN 3861



Reihe / Series S

Druck Pressure	Rohr A.D. Tube O.D.		Gewinde Thread		Ca. Maße Approx. Dimensions			Bemerkungen Notes	Bestellzeichen Order-Code
	PN	D1	D2	G1	G2	L1	SW1		
800	8	6	M 16 x 1,5	M 14 x 1,5	35,5	19	17		GVR-DKO-08-S/06-S
800	10	6	M 18 x 1,5	M 14 x 1,5	35,5	22	17		GVR-DKO-10-S/06-S
800	10	8	M 18 x 1,5	M 16 x 1,5	37,0	22	19		GVR-DKO-10-S/08-S
630	12	6	M 20 x 1,5	M 14 x 1,5	36,0	24	17		GVR-DKO-12-S/06-S
630	12	8	M 20 x 1,5	M 16 x 1,5	37,5	24	19		GVR-DKO-12-S/08-S
630	12	10	M 20 x 1,5	M 18 x 1,5	37,5	24	22		GVR-DKO-12-S/10-S
630	16	10	M 24 x 1,5	M 18 x 1,5	37,5	30	22		GVR-DKO-16-S/10-S
630	16	12	M 24 x 1,5	M 20 x 1,5	38,0	30	24		GVR-DKO-16-S/12-S
630	16	14	M 24 x 1,5	M 22 x 1,5	47,0	30	27		GVR-DKO-16-S/14-S
420	20	12	M 30 x 2	M 20 x 1,5	43,0	36	24		GVR-DKO-20-S/12-S
420	20	14	M 30 x 2	M 22 x 1,5		36	27		GVR-DKO-20-S/14-S
420	20	16	M 30 x 2	M 24 x 1,5	43,0	36	30		GVR-DKO-20-S/16-S
420	25	16	M 36 x 2	M 24 x 1,5	46,0	46	30		GVR-DKO-25-S/16-S
420	25	20	M 36 x 2	M 30 x 2	46,0	46	36		GVR-DKO-25-S/20-S
420	30	16	M 42 x 2	M 24 x 1,5	46,0	50	30		GVR-DKO-30-S/16-S
420	30	20	M 42 x 2	M 30 x 2	52,0	50	36		GVR-DKO-30-S/20-S
420	30	25	M 42 x 2	M 36 x 2	52,0	50	46		GVR-DKO-30-S/25-S
420	38	20	M 52 x 2	M 30 x 2	52,0	60	36		GVR-DKO-38-S/20-S
420	38	25	M 52 x 2	M 36 x 2	53,0	60	46		GVR-DKO-38-S/25-S
420	38	30	M 52 x 2	M 42 x 2	52,0	60	50		GVR-DKO-38-S/30-S

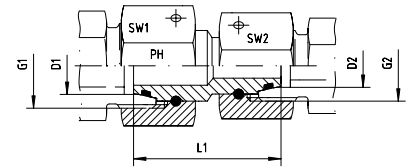
GVR - GERADE - REDUZIERUNGEN

GVR - STRAIGHT - SWIFEL - REDUCERS



Beide Seiten mit drehbarer Mutter - DKO
 Mit Dichtkegel und O-Ring - FPM
 Passend in Bohrungsform W DIN 3861

Both sides with Swivel Nut - DKO
 With Taper and O-ring - FPM
 For Type of Port End W DIN 3861



Reihe / Series L / S

Druck Pressure	Rohr A.D. Tube O.D.		Gewinde Thread		Ca. Maße Approx. Dimensions			Bestellzeichen Order-Code
PN	D1	D2	G1	G2	L1	SW1	SW2	
500	6	6	M 14 x 1,5	M 12 x 1,5	33,0	17	14	GVR-DKO-06-L/06-S
500	8	6	M 14 x 1,5	M 14 x 1,5		17	17	GVR-DKO-08-L/06-S
500	8	8	M 16 x 1,5	M 14 x 1,5	35,0	19	17	GVR-DKO-08-L/08-S
500	10	10	M 18 x 1,5	M 16 x 1,5	35,3	22	19	GVR-DKO-10-L/10-S
400	12	10	M 18 x 1,5	M 18 x 1,5	32,5	22	22	GVR-DKO-12-L/10-S
400	12	12	M 20 x 1,5	M 18 x 1,5	37,0	24	22	GVR-DKO-12-L/12-S
400	15	12	M 22 x 1,5	M 20 x 1,5	38,5	27	24	GVR-DKO-15-L/12-S
400	15	14	M 22 x 1,5	M 22 x 1,5	44,5	27	27	GVR-DKO-15-L/14-S
400	18	16	M 26 x 1,5	M 24 x 1,5	40,0	32	30	GVR-DKO-18-L/16-S
250	22	20	M 30 x 2	M 30 x 2	53,0	36	36	GVR-DKO-22-L/20-S
250	28	25	M 36 x 2	M 36 x 2	46,0	46	41	GVR-DKO-28-L/25-S
250	35	30	M 45 x 2	M 42 x 2	51,0	50	50	GVR-DKO-35-L/30-S
250	42	38	M 52 x 2	M 52 x 2	52,0	60	60	GVR-DKO-42-L/38-S

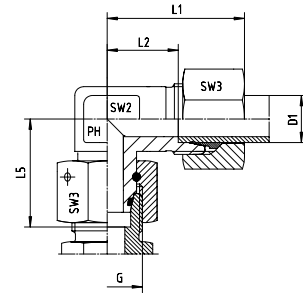
Reihe / Series S / L

Druck Pressure	Rohr A.D. Tube O.D.		Gewinde Thread		Ca. Maße Approx. Dimensions			Bestellzeichen Order-Code
PN	D1	D2	G1	G2	L1	SW1	SW2	
500	10	8	M 18 x 1,5	M 14 x 1,5	33,0	22	17	GVR-DKO-10-S/08-L
500	12	8	M 20 x 1,5	M 14 x 1,5	34,0	24	17	GVR-DKO-12-S/08-L
500	12	10	M 20 x 1,5	M 16 x 1,5	33,0	24	19	GVR-DKO-12-S/10-L
500	16	10	M 24 x 1,5	M 16 x 1,5	35,5	30	19	GVR-DKO-16-S/10-L
400	16	12	M 24 x 1,5	M 18 x 1,5	39,0	30	22	GVR-DKO-16-S/12-L
400	16	15	M 24 x 1,5	M 22 x 1,5	38,5	30	27	GVR-DKO-16-S/15-L
400	20	18	M 30 x 2	M 26 x 1,5	43,0	36	32	GVR-DKO-20-S/18-L
400	25	18	M 36 x 2	M 26 x 1,5	46,0	46	32	GVR-DKO-25-S/18-L
250	25	22	M 36 x 2	M 30 x 2	46,0	46	36	GVR-DKO-25-S/22-L
250	30	28	M 42 x 2	M 36 x 2	49,5	50	41	GVR-DKO-30-S/28-L
250	38	35	M 52 x 2	M 45 x 2	53,0	60	50	GVR-DKO-38-S/35-L



Einstellbare Winkelverschraubungen mit Dichtkegel
und O-Ring FPM
Rohrseitig Schneidringanschluss

With Taper and O-ring - FPM
Cutting Ring Connection at the Tube Connection side



Reihe / Series L

Druck Pressure	Rohr A.D. Tube O.D.	Gewinde Thread	Ca. Maße Approx. Dimensions					Bemerkungen Notes	Bestellzeichen Order-Code
PN	D1	G	L1	L2	L5	SW2	SW3		
500	6	M 12 x 1,5	27,0	12,0	26,0	12	14		EW-DKOL-06
500	8	M 14 x 1,5	29,0	14,0	27,5	12	17		EW-DKOL-08
500	10	M 16 x 1,5	30,0	15,0	29,0	14	19		EW-DKOL-10
400	12	M 18 x 1,5	32,0	17,0	29,5	17	22		EW-DKOL-12
400	15	M 22 x 1,5	36,0	21,0	32,5	19	27		EW-DKOL-15
400	18	M 26 x 1,5	40,0	23,5	35,5	24	32		EW-DKOL-18
250	22	M 30 x 2	44,0	27,5	38,5	27	36		EW-DKOL-22
250	28	M 36 x 2	47,0	30,5	41,5	36	41		EW-DKOL-28
250	35	M 45 x 2	56,0	34,5	51,0	41	50		EW-DKOL-35
250	42	M 52 x 2	63,0	40,0	56,0	50	60		EW-DKOL-42

Reihe / Series S

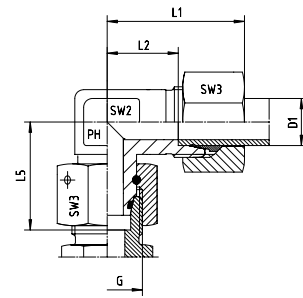
Druck Pressure	Rohr A.D. Tube O.D.	Gewinde Thread	Ca. Maße Approx. Dimensions					Bestellzeichen Order-Code
PN	D1	G	L1	L2	L5	SW2	SW3	
800	6	M 14 x 1,5	31,0	16,0	27,0	12	17	EW-DKOS-06
800	8	M 16 x 1,5	32,0	17,0	27,5	14	19	EW-DKOS-08
800	10	M 18 x 1,5	34,0	17,5	30,0	17	22	EW-DKOS-10
630	12	M 20 x 1,5	38,0	21,5	31,0	17	24	EW-DKOS-12
630	14	M 22 x 1,5	40,0	22,0	35,0	19	27	EW-DKOS-14
630	16	M 24 x 1,5	43,0	24,5	36,5	24	30	EW-DKOS-16
420	20	M 30 x 2	48,0	26,5	44,5	27	36	EW-DKOS-20
420	25	M 36 x 2	54,0	30,0	50,0	36	46	EW-DKOS-25
420	30	M 42 x 2	62,0	35,5	55,0	41	50	EW-DKOS-30
420	38	M 52 x 2	72,0	41,0	63,0	50	60	EW-DKOS-38

EW - EINSTELLBARE - WINKEL - VERSCHRAUBUNGEN

EW - ADJUSTABLE - ELBOWS

Einstellbare Winkelverschraubungen mit Dichtkegel
und O-Ring FPM
Rohrseitig Schneidringanschluss

With Taper and O-ring - FPM
Cutting Ring Connection at the Tube Connection side



Reihe / Series L

Druck Pressure	Rohr A.D. Tube O.D.	Gewinde Thread	Ca. Maße Approx. Dimensions					Bemerkungen Notes	Bestellzeichen Order-Code
PN	D1	G	L1	L2	L5	SW2	SW3		
500	6	M 12 x 1,5	27,0	12,0	26,0	12	14		EW-DKOL-06-SC
500	8	M 14 x 1,5	29,0	14,0	27,5	12	17		EW-DKOL-08-SC
500	10	M 16 x 1,5	30,0	15,0	29,0	14	19		EW-DKOL-10-SC
400	12	M 18 x 1,5	32,0	17,0	29,5	17	22		EW-DKOL-12-SC
400	15	M 22 x 1,5	36,0	21,0	32,5	19	27		EW-DKOL-15-SC
400	18	M 26 x 1,5	40,0	23,5	35,5	24	32		EW-DKOL-18-SC
250	22	M 30 x 2	44,0	27,5	38,5	27	36		EW-DKOL-22-SC
250	28	M 36 x 2	47,0	30,5	41,5	36	41		EW-DKOL-28-SC
250	35	M 45 x 2	56,0	34,5	51,0	41	50		EW-DKOL-35-SC
250	42	M 52 x 2	63,0	40,0	56,0	50	60		EW-DKOL-42-SC

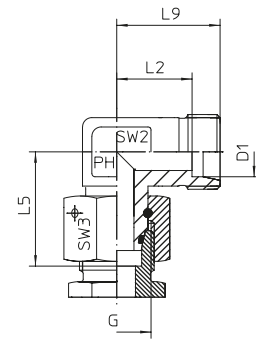
Reihe / Series S

Druck Pressure	Rohr A.D. Tube O.D.	Gewinde Thread	Ca. Maße Approx. Dimensions					Bemerkungen Notes	Bestellzeichen Order-Code
PN	D1	G	L1	L2	L5	SW2	SW3		
800	6	M 14 x 1,5	31,0	16,0	27,0	12	17		EW-DKOS-06-SC
800	8	M 16 x 1,5	32,0	17,0	27,5	14	19		EW-DKOS-08-SC
800	10	M 18 x 1,5	34,0	17,5	30,0	17	22		EW-DKOS-10-SC
630	12	M 20 x 1,5	38,0	21,5	31,0	17	24		EW-DKOS-12-SC
630	14	M 22 x 1,5	40,0	22,0	35,0	19	27		EW-DKOS-14-SC
630	16	M 24 x 1,5	43,0	24,5	36,5	24	30		EW-DKOS-16-SC
420	20	M 30 x 2	48,0	26,5	44,5	27	36		EW-DKOS-20-SC
420	25	M 36 x 2	54,0	30,0	50,0	36	46		EW-DKOS-25-SC
420	30	M 42 x 2	62,0	35,5	55,0	41	50		EW-DKOS-30-SC
420	38	M 52 x 2	72,0	41,0	63,0	50	60		EW-DKOS-38-SC



Einstellbare Winkelverschraubungen mit Dichtkegel und O-Ring FPM
Rohrseitig Schneidringanschluss

With Taper and O-ring - FPM
Cutting Ring Connection at the Tube Connection side



Reihe / Series L

Druck Pressure	Rohr A.D. Tube O.D.	Gewinde Thread	Ca. Maße Approx. Dimensions					Bemerkungen Notes	Bestellzeichen Order-Code
PN	D1	G	L2	L5	L9	SW2	SW3		
500	6	M 12 x 1,5	12,0	26,0	19,0	12,0	14,0		EW-DKOL-06-OMD
500	8	M 14 x 1,5	14,0	27,5	21,0	12,0	17,0		EW-DKOL-08-OMD
500	10	M 16 x 1,5	15,0	29,0	22,0	14,0	19,0		EW-DKOL-10-OMD
400	12	M 18 x 1,5	17,0	29,5	24,0	17,0	22,0		EW-DKOL-12-OMD
400	15	M 22 x 1,5	21,0	32,5	28,0	19,0	27,0		EW-DKOL-15-OMD
400	18	M 26 x 1,5	23,5	35,5	31,0	24,0	32,0		EW-DKOL-18-OMD
250	22	M 30 x 2	27,5	38,5	35,0	27,0	36,0		EW-DKOL-22-OMD
250	28	M 36 x 2	30,5	41,5	38,0	36,0	41,0		EW-DKOL-28-OMD
250	35	M 45 x 2	34,5	51,0	45,0	41,0	50,0		EW-DKOL-35-OMD
250	42	M 52 x 2	40,0	56,0	51,0	50,0	60,0		EW-DKOL-42-OMD

Reihe / Series S

Druck Pressure	Rohr A.D. Tube O.D.	Gewinde Thread	Ca. Maße Approx. Dimensions					Bemerkungen Notes	Bestellzeichen Order-Code
PN	D1	G	L2	L5	L9	SW2	SW3		
800	6	M 14 x 1,5	16,0	27,0	23,0	12,0	17,0		EW-DKOS-06-OMD
800	8	M 16 x 1,5	17,0	27,5	24,0	14,0	19,0		EW-DKOS-08-OMD
800	10	M 18 x 1,5	17,5	30,0	25,0	17,0	22,0		EW-DKOS-10-OMD
630	12	M 20 x 1,5	21,5	31,0	29,0	17,0	24,0		EW-DKOS-12-OMD
630	14	M 22 x 1,5	22,0	35,0	30,0	19,0	27,0		EW-DKOS-14-OMD
630	16	M 24 x 1,5	24,5	36,5	33,0	24,0	30,0		EW-DKOS-16-OMD
420	20	M 30 x 2	26,5	44,5	37,0	27,0	36,0		EW-DKOS-20-OMD
420	25	M 36 x 2	30,0	50,0	42,0	36,0	46,0		EW-DKOS-25-OMD
420	30	M 42 x 2	35,5	55,0	49,0	41,0	50,0		EW-DKOS-30-OMD
420	38	M 52 x 2	41,0	63,0	57,0	50,0	60,0		EW-DKOS-38-OMD

EW - EINSTELLBARE - WINKEL - VERSCHRAUBUNGEN

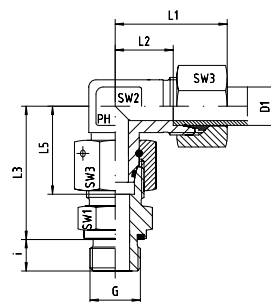
EW - ADJUSTABLE - ELBOWS



EDELSTAHL / STAINLESS STEEL
VERBINDUNGSTECHNIK
FLUID CONNECTORS

Einstellbare Winkel-Verschraubungen mit Dichtkegel und O-Ring FPM
Rohrseitig Schneidringanschluss
Einschraubgewinde:
Whitworth-Rohrgewinde - Zylindrisch
wd = Abdichtung durch Profildichtung - FPM

With Taper and O-ring - FPM
Cutting Ring Connection at the Tube Connection side
Thread: BSP - Parallel
wd = Sealing by an Elastomer Profiled Ring - FPM



Reihe / Series L

Druck Pressure	Rohr A.D. Tube O.D.	Gewinde Thread	Ca. Maße Approx. Dimensions								Bestellzeichen Order-Code
PN	D1	G	L1	L2	L3	L5	i	SW1	SW2	SW3	
500	6	G 1/8"	27,0	12,0	34,5	26,0	8,0	14	12	14	EW-DKOL-06-G 1/8"-wd
500	8	G 1/4"	29,0	14,0	37,5	27,5	12,0	17	12	17	EW-DKOL-08-G 1/4"-wd
500	10	G 1/4"	30,0	15,0	40,0	29,0	12,0	19	14	19	EW-DKOL-10-G 1/4"-wd
400	12	G 1/4"	32,0	17,0	42,0	29,5	12,0	19	17	22	EW-DKOL-12-G 1/4"-wd
400	12	G 3/8"	32,0	17,0	42,0	29,5	12,0	22	17	22	EW-DKOL-12-G 3/8"-wd
400	12	G 1/2"	32,0	17,0	43,0	29,5	14,0	27	17	22	EW-DKOL-12-G 1/2"-wd
400	15	G 1/2"	36,0	21,0	46,0	32,5	14,0	27	19	27	EW-DKOL-15-G 1/2"-wd
400	18	G 1/2"	40,0	23,5	50,0	35,5	14,0	27	24	32	EW-DKOL-18-G 1/2"-wd
250	22	G 3/4"	44,0	27,5	55,0	38,5	16,0	32	27	36	EW-DKOL-22-G 3/4"-wd
250	28	G 1"	47,0	30,5	59,0	41,5	18,0	41	36	41	EW-DKOL-28-G 1"-wd
250	35	G 1 1/4"	56,0	34,5	68,5	51,0	20,0	50	41	50	EW-DKOL-35-G 1 1/4"-wd
250	42	G 1 1/2"	63,0	40,0	75,0	56,0	22,0	55	50	60	EW-DKOL-42-G 1 1/2"-wd

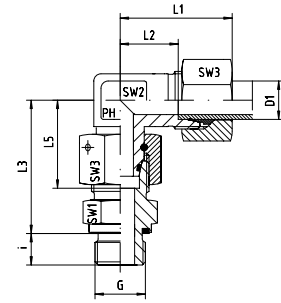
Reihe / Series S

Druck Pressure	Rohr A.D. Tube O.D.	Gewinde Thread	Ca. Maße Approx. Dimensions								Bestellzeichen Order-Code
PN	D1	G	L1	L2	L3	L5	i	SW1	SW2	SW3	
800	6	G 1/4"	31,0	16,0	40,0	27,0	12,0	19	12	17	EW-DKOS-06-G 1/4"-wd
800	8	G 1/4"	32,0	17,0	42,5	27,5	12,0	19	14	19	EW-DKOS-08-G 1/4"-wd
800	10	G 3/8"	34,0	17,5	45,0	30,0	12,0	22	17	22	EW-DKOS-10-G 3/8"-wd
630	12	G 3/8"	38,0	21,5	48,0	31,0	12,0	22	17	24	EW-DKOS-12-G 3/8"-wd
630	12	G 1/2"	38,0	21,5	49,0	31,0	14,0	27	17	24	EW-DKOS-12-G 1/2"-wd
630	14	G 1/2"	40,0	22,0	54,0	35,0	14,0	27	19	27	EW-DKOS-14-G 1/2"-wd
630	16	G 1/2"	43,0	24,5	55,0	36,5	14,0	27	24	30	EW-DKOS-16-G 1/2"-wd
420	20	G 3/4"	48,0	26,5	65,0	44,5	16,0	32	27	36	EW-DKOS-20-G 3/4"-wd
420	25	G 1"	54,0	30,0	73,0	50,0	18,0	41	36	46	EW-DKOS-25-G 1"-wd
420	30	G 1 1/4"	62,0	35,5	78,5	55,0	20,0	50	41	50	EW-DKOS-30-G 1 1/4"-wd
420	38	G 1 1/2"	72,0	41,0	89,0	63,0	22,0	55	50	60	EW-DKOS-38-G 1 1/2"-wd



Einstellbare Winkel-Verschraubungen mit Dichtkegel und O-Ring FPM
Rohrseitig Schneidringanschluss
Einschraubgewinde:
Whitworth-Rohrgewinde - Zylindrisch
wd = Abdichtung durch Profildichtung - FPM

With Taper and O-ring - FPM
Cutting Ring Connection at the Tube Connection side
Thread: BSP - Parallel
wd = Sealing by an Elastomer Profiled Ring - FPM



Reihe / Series L

Druck Pressure	Rohr A.D. Tube O.D.	Gewinde Thread	Ca. Maße Approx. Dimensions								Bestellzeichen Order-Code
PN	D1	G	L1	L2	L3	L5	i	SW1	SW2	SW3	
500	6	G 1/8"	27,0	12,0	34,5	26,0	8,0	14	12	14	EW-DKOL-06-G 1/8"-wd-SC
500	8	G 1/4"	29,0	14,0	37,5	27,5	12,0	17	12	17	EW-DKOL-08-G 1/4"-wd-SC
500	10	G 1/4"	30,0	15,0	40,0	29,0	12,0	19	14	19	EW-DKOL-10-G 1/4"-wd-SC
400	12	G 1/4"	32,0	17,0	42,0	29,5	12,0	19	17	22	EW-DKOL-12-G 1/4"-wd-SC
400	12	G 3/8"	32,0	17,0	42,0	29,5	12,0	22	17	22	EW-DKOL-12-G 3/8"-wd-SC
400	12	G 1/2"	32,0	17,0	43,0	29,5	14,0	27	17	22	EW-DKOL-12-G 1/2"-wd-SC
400	15	G 1/2"	36,0	21,0	46,0	32,5	14,0	27	19	27	EW-DKOL-15-G 1/2"-wd-SC
400	18	G 1/2"	40,0	23,5	50,0	35,5	14,0	27	24	32	EW-DKOL-18-G 1/2"-wd-SC
250	22	G 3/4"	44,0	27,5	55,0	38,5	16,0	32	27	36	EW-DKOL-22-G 3/4"-wd-SC
250	28	G 1"	47,0	30,5	59,0	41,5	18,0	41	36	41	EW-DKOL-28-G 1"-wd-SC
250	35	G 1 1/4"	56,0	34,5	68,5	51,0	20,0	50	41	50	EW-DKOL-35-G 1 1/4"-wd-SC
250	42	G 1 1/2"	63,0	40,0	75,0	56,0	22,0	55	50	60	EW-DKOL-42-G 1 1/2"-wd-SC

Reihe / Series S

Druck Pressure	Rohr A.D. Tube O.D.	Gewinde Thread	Ca. Maße Approx. Dimensions								Bestellzeichen Order-Code
PN	D1	G	L1	L2	L3	L5	i	SW1	SW2	SW3	
800	6	G 1/4"	31,0	16,0	40,0	27,0	12,0	19	12	17	EW-DKOS-06-G 1/4"-wd-SC
800	8	G 1/4"	32,0	17,0	42,5	27,5	12,0	19	14	19	EW-DKOS-08-G 1/4"-wd-SC
800	10	G 3/8"	34,0	17,5	45,0	30,0	12,0	22	17	22	EW-DKOS-10-G 3/8"-wd-SC
630	12	G 3/8"	38,0	21,5	48,0	31,0	12,0	22	17	24	EW-DKOS-12-G 3/8"-wd-SC
630	12	G 1/2"	38,0	21,5	49,0	31,0	14,0	27	17	24	EW-DKOS-12-G 1/2"-wd-SC
630	14	G 1/2"	40,0	22,0	54,0	35,0	14,0	27	19	27	EW-DKOS-14-G 1/2"-wd-SC
630	16	G 1/2"	43,0	24,5	55,0	36,5	14,0	27	24	30	EW-DKOS-16-G 1/2"-wd-SC
420	20	G 3/4"	48,0	26,5	65,0	44,5	16,0	32	27	36	EW-DKOS-20-G 3/4"-wd-SC
420	25	G 1"	54,0	30,0	73,0	50,0	18,0	41	36	46	EW-DKOS-25-G 1"-wd-SC
420	30	G 1 1/4"	62,0	35,5	78,5	55,0	20,0	50	41	50	EW-DKOS-30-G 1 1/4"-wd-SC
420	38	G 1 1/2"	72,0	41,0	89,0	63,0	22,0	55	50	60	EW-DKOS-38-G 1 1/2"-wd-SC

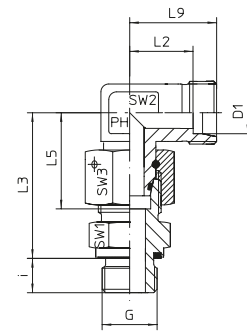
EW - EINSTELLBARE - WINKEL - VERSCHRAUBUNGEN

EW - ADJUSTABLE - ELBOWS



EDELSTAHL / STAINLESS STEEL
VERBINDUNGSTECHNIK
FLUID CONNECTORS

Einstellbare Winkel-Verschraubungen mit Dichtkegel und O-Ring FPM
Rohrseitig Schneidringanschluss
Einschraubgewinde:
Whitworth-Rohrgewinde - Zylindrisch
wd = Abdichtung durch Profildichtung - FPM



With Taper and O-ring - FPM
Cutting Ring Connection at the Tube Connection side
Thread: BSP - Parallel
wd = Sealing by an Elastomer Profiled Ring - FPM

Reihe / Series L

Druck Pressure	Rohr A.D. Tube O.D.	Gewinde Thread	Ca. Maße Approx. Dimensions								Bestellzeichen Order-Code
			L2	L3	L5	L9	i	SW1	SW2	SW3	
PN	D1	G	L2	L3	L5	L9	i	SW1	SW2	SW3	
500	6	G 1/8"	12,0	34,5	26,0	19,0	8,0	14	12	14	EW-DKOL-06-G 1/8"-wd-OMD
500	8	G 1/4"	14,0	37,5	27,5	21,0	12,0	17	12	17	EW-DKOL-08-G 1/4"-wd-OMD
500	10	G 1/4"	15,0	40,0	29,0	22,0	12,0	19	14	19	EW-DKOL-10-G 1/4"-wd-OMD
400	12	G 1/2"	17,0	42,0	29,5	24,0	12,0	19	17	22	EW-DKOL-12-G 1/2"-wd-OMD
400	12	G 1/4"	17,0	42,0	29,5	24,0	12,0	22	17	22	EW-DKOL-12-G 1/4"-wd-OMD
400	12	G 3/8"	17,0	43,0	29,5	24,0	14,0	27	17	22	EW-DKOL-12-G 3/8"-wd-OMD
400	15	G 1/2"	21,0	46,0	32,5	28,0	14,0	27	19	27	EW-DKOL-15-G 1/2"-wd-OMD
400	18	G 1/2"	23,5	50,0	35,5	31,0	14,0	27	24	32	EW-DKOL-18-G 1/2"-wd-OMD
250	22	G 3/4"	27,5	55,0	38,5	35,0	16,0	32	27	36	EW-DKOL-22-G 3/4"-wd-OMD
250	28	G 1"	30,5	59,0	41,5	38,0	18,0	41	36	41	EW-DKOL-28-G 1"-wd-OMD
250	35	G 1 1/4"	34,5	68,5	51,0	45,0	20,0	50	41	50	EW-DKOL-35-G 1 1/4"-wd-OMD
250	42	G 1 1/2"	40,0	75,0	56,0	51,0	22,0	55	50	60	EW-DKOL-42-G 1 1/2"-wd-OMD

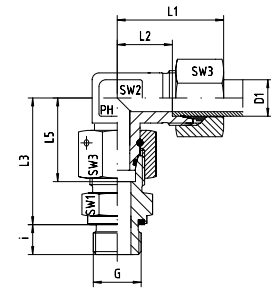
Reihe / Series S

Druck Pressure	Rohr A.D. Tube O.D.	Gewinde Thread	Ca. Maße Approx. Dimensions								Bestellzeichen Order-Code
			L2	L3	L5	L9	i	SW1	SW2	SW3	
PN	D1	G	L2	L3	L5	L9	i	SW1	SW2	SW3	
800	6	G 1/4"	16,0	40,0	27,0	23,0	12,0	19	12	17	EW-DKOS-06-G 1/4"-wd-OMD
800	8	G 1/4"	17,0	42,5	27,5	24,0	12,0	19	14	19	EW-DKOS-08-G 1/4"-wd-OMD
800	10	G 3/8"	17,5	45,0	30,0	25,0	12,0	22	17	22	EW-DKOS-10-G 3/8"-wd-OMD
630	12	G 1/2"	21,5	48,0	31,0	29,0	12,0	22	17	24	EW-DKOS-12-G 1/2"-wd-OMD
630	12	G 3/8"	21,5	49,0	31,0	29,0	14,0	27	17	24	EW-DKOS-12-G 3/8"-wd-OMD
630	14	G 1/2"	22,0	54,0	35,0	30,0	14,0	27	19	27	EW-DKOS-14-G 1/2"-wd-OMD
630	16	G 1/2"	24,5	55,0	36,5	33,0	14,0	27	24	30	EW-DKOS-16-G 1/2"-wd-OMD
420	20	G 3/4"	26,5	65,0	44,5	37,0	16,0	32	27	36	EW-DKOS-20-G 3/4"-wd-OMD
420	25	G 1"	30,0	73,0	50,0	42,0	18,0	41	36	46	EW-DKOS-25-G 1"-wd-OMD
420	30	G 1 1/4"	35,5	78,5	55,0	49,0	20,0	50	41	50	EW-DKOS-30-G 1 1/4"-wd-OMD
420	38	G 1 1/2"	41,0	89,0	63,0	57,0	22,0	55	50	60	EW-DKOS-38-G 1 1/2"-wd-OMD



Einstellbare Winkel-Verschraubungen mit Dichtkegel und O-Ring FPM
Rohrseitig Schneidringanschluss
Einschraubgewinde:
Metrisches Feingewinde - Zylindrisch
wd = Abdichtung durch Profildichtung - FPM

With Taper and O-ring - FPM
Cutting Ring Connection at the Tube Connection side
Thread: Metric - Parallel
wd = Sealing by an Elastomer Profiled Ring - FPM



Reihe / Series L

Druck Pressure	Rohr A.D. Tube O.D.	Gewinde Thread	Ca. Maße Approx. Dimensions								Bestellzeichen Order-Code
PN	D1	G	L1	L2	L3	L5	i	SW1	SW2	SW3	
500	6	M 10 x 1	27,0	12,0	34,5	26,0	8,0	14	12	14	EW-DKOL-06-M 10x1-wd
500	8	M 12 x 1,5	29,0	14,0	37,5	27,5	12,0	17	12	17	EW-DKOL-08-M 12x1,5-wd
500	10	M 14 x 1,5	30,0	15,0	40,0	29,0	12,0	19	14	19	EW-DKOL-10-M 14x1,5-wd
400	12	M 16 x 1,5	32,0	17,0	42,0	29,5	12,0	22	17	22	EW-DKOL-12-M 16x1,5-wd
400	15	M 18 x 1,5	36,0	21,0	46,0	32,5	12,0	24	19	27	EW-DKOL-15-M 18x1,5-wd
400	18	M 22 x 1,5	40,0	23,5	50,0	35,5	14,0	27	24	32	EW-DKOL-18-M 22x1,5-wd
250	22	M 26 x 1,5	44,0	27,5	55,0	38,5	16,0	32	27	36	EW-DKOL-22-M 26x1,5-wd
250	28	M 33 x 2	47,0	30,5	59,0	41,5	18,0	41	36	41	EW-DKOL-28-M 33x2-wd
250	35	M 42 x 2	56,0	34,5	68,5	51,0	20,0	50	41	50	EW-DKOL-35-M 42x2-wd
250	42	M 48 x 2	63,0	40,0	75,0	56,0	22,0	55	50	60	EW-DKOL-42-M 48x2-wd

Reihe / Series S

Druck Pressure	Rohr A.D. Tube O.D.	Gewinde Thread	Ca. Maße Approx. Dimensions								Bestellzeichen Order-Code
PN	D1	G	L1	L2	L3	L5	i	SW1	SW2	SW3	
800	6	M 12 x 1,5	31,0	16,0	40,0	27,0	12,0	17	12	17	EW-DKOS-06-M 12x1,5-wd
800	8	M 14 x 1,5	32,0	17,0	42,5	27,5	12,0	19	14	19	EW-DKOS-08-M 14x1,5-wd
800	10	M 16 x 1,5	34,0	17,5	45,0	30,0	12,0	22	17	22	EW-DKOS-10-M 16x1,5-wd
630	12	M 18 x 1,5	38,0	21,5	48,0	31,0	12,0	24	17	24	EW-DKOS-12-M 18x1,5-wd
630	14	M 20 x 1,5	40,0	22,0	54,0	35,0	14,0	27	19	27	EW-DKOS-14-M 20x1,5-wd
630	16	M 22 x 1,5	43,0	24,5	55,0	36,5	14,0	27	24	30	EW-DKOS-16-M 22x1,5-wd
420	20	M 27 x 2	48,0	26,5	65,0	44,5	16,0	32	27	36	EW-DKOS-20-M 27x2-wd
420	25	M 33 x 2	54,0	30,0	73,0	50,0	18,0	41	36	46	EW-DKOS-25-M 33x2-wd
420	30	M 42 x 2	62,0	35,5	78,5	55,0	20,0	50	41	50	EW-DKOS-30-M 42x2-wd
420	38	M 48 x 2	72,0	41,0	89,0	63,0	22,0	55	50	60	EW-DKOS-38-M 48x2-wd

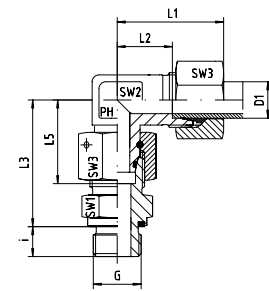
EW - EINSTELLBARE - WINKEL - VERSCHRAUBUNGEN

EW - ADJUSTABLE - ELBOWS



EDELSTAHL / STAINLESS STEEL
VERBINDUNGSTECHNIK
FLUID CONNECTORS

Einstellbare Winkel-Verschraubungen mit Dichtkegel und O-Ring FPM
Rohrseitig Schneidringanschluss
Einschraubgewinde:
Metrisches Feingewinde - Zylindrisch
wd = Abdichtung durch Profildichtung - FPM



With Taper and O-ring - FPM
Cutting Ring Connection at the Tube Connection side
Thread: Metric - Parallel
wd = Sealing by an Elastomer Profiled Ring - FPM

Reihe / Series L

Druck Pressure	Rohr A.D. Tube O.D.	Gewinde Thread	Ca. Maße Approx. Dimensions								Bestellzeichen Order-Code
PN	D1	G	L1	L2	L3	L5	i	SW1	SW2	SW3	
500	6	M 10 x 1	27,0	12,0	34,5	26,0	8,0	14	12	14	EW-DKOL-06-M 10x1-wd-SC
500	8	M 12 x 1,5	29,0	14,0	37,5	27,5	12,0	17	12	17	EW-DKOL-08-M 12x1,5-wd-SC
500	10	M 14 x 1,5	30,0	15,0	40,0	29,0	12,0	19	14	19	EW-DKOL-10-M 14x1,5-wd-SC
400	12	M 16 x 1,5	32,0	17,0	42,0	29,5	12,0	22	17	22	EW-DKOL-12-M 16x1,5-wd-SC
400	15	M 18 x 1,5	36,0	21,0	46,0	32,5	12,0	24	19	27	EW-DKOL-15-M 18x1,5-wd-SC
400	18	M 22 x 1,5	40,0	23,5	50,0	35,5	14,0	27	24	32	EW-DKOL-18-M 22x1,5-wd-SC
250	22	M 26 x 1,5	44,0	27,5	55,0	38,5	16,0	32	27	36	EW-DKOL-22-M 26x1,5-wd-SC
250	28	M 33 x 2	47,0	30,5	59,0	41,5	18,0	41	36	41	EW-DKOL-28-M 33x2-wd-SC
250	35	M 42 x 2	56,0	34,5	68,5	51,0	20,0	50	41	50	EW-DKOL-35-M 42x2-wd-SC
250	42	M 48 x 2	63,0	40,0	75,0	56,0	22,0	55	50	60	EW-DKOL-42-M 48x2-wd-SC

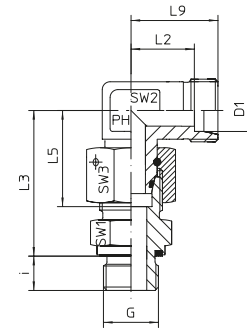
Reihe / Series S

Druck Pressure	Rohr A.D. Tube O.D.	Gewinde Thread	Ca. Maße Approx. Dimensions								Bestellzeichen Order-Code
PN	D1	G	L1	L2	L3	L5	i	SW1	SW2	SW3	
800	6	M 12 x 1,5	31,0	16,0	40,0	27,0	12,0	17	12	17	EW-DKOS-06-M 12x1,5-wd-SC
800	8	M 14 x 1,5	32,0	17,0	42,5	27,5	12,0	19	14	19	EW-DKOS-08-M 14x1,5-wd-SC
800	10	M 16 x 1,5	34,0	17,5	45,0	30,0	12,0	22	17	22	EW-DKOS-10-M 16x1,5-wd-SC
630	12	M 18 x 1,5	38,0	21,5	48,0	31,0	12,0	24	17	24	EW-DKOS-12-M 18x1,5-wd-SC
630	14	M 20 x 1,5	40,0	22,0	54,0	35,0	14,0	27	19	27	EW-DKOS-14-M 20x1,5-wd-SC
630	16	M 22 x 1,5	43,0	24,5	55,0	36,5	14,0	27	24	30	EW-DKOS-16-M 22x1,5-wd-SC
420	20	M 27 x 2	48,0	26,5	65,0	44,5	16,0	32	27	36	EW-DKOS-20-M 27x2-wd-SC
420	25	M 33 x 2	54,0	30,0	73,0	50,0	18,0	41	36	46	EW-DKOS-25-M 33x2-wd-SC
420	30	M 42 x 2	62,0	35,5	78,5	55,0	20,0	50	41	50	EW-DKOS-30-M 42x2-wd-SC
420	38	M 48 x 2	72,0	41,0	89,0	63,0	22,0	55	50	60	EW-DKOS-38-M 48x2-wd-SC



Einstellbare Winkel-Verschraubungen mit Dichtkegel und O-Ring FPM
Rohrseitig Schneidringanschluss
Einschraubgewinde:
Metrisches Feingewinde - Zylindrisch
wd = Abdichtung durch Profildichtung - FPM

With Taper and O-ring - FPM
Cutting Ring Connection at the Tube Connection side
Thread: Metric - Parallel
wd = Sealing by an Elastomer Profiled Ring - FPM



Reihe / Series L

Druck Pressure	Rohr A.D. Tube O.D.	Gewinde Thread	Ca. Maße Approx. Dimensions								Bestellzeichen Order-Code
			L2	L3	L5	L9	i	SW1	SW2	SW3	
PN	D1	G	L2	L3	L5	L9	i	SW1	SW2	SW3	
500	6	M 10 x 1	12,0	34,5	26,0	19,0	8,0	14	12	14	EW-DKOL-06-M 10x1-wd-OMD
500	8	M 12 x 1,5	14,0	37,5	27,5	21,0	12,0	17	12	17	EW-DKOL-08-M 12x1,5-wd-OMD
500	10	M 14 x 1,5	15,0	40,0	29,0	22,0	12,0	19	14	19	EW-DKOL-10-M 14x1,5-wd-OMD
400	12	M 16 x 1,5	17,0	42,0	29,5	24,0	12,0	22	17	22	EW-DKOL-12-M 16x1,5-wd-OMD
400	15	M 18 x 1,5	21,0	46,0	32,5	28,0	12,0	24	19	27	EW-DKOL-15-M 18x1,5-wd-OMD
400	18	M 22 x 1,5	23,5	50,0	35,5	31,0	14,0	27	24	32	EW-DKOL-18-M 22x1,5-wd-OMD
250	22	M 26 x 1,5	27,5	55,0	38,5	35,0	16,0	32	27	36	EW-DKOL-22-M 26x1,5-wd-OMD
250	28	M 33 x 2	30,5	59,0	41,5	38,0	18,0	41	36	41	EW-DKOL-28-M 33x2-wd-OMD
250	35	M 42 x 2	34,5	68,5	51,0	45,0	20,0	50	41	50	EW-DKOL-35-M 42x2-wd-OMD
250	42	M 48 x 2	40,0	75,0	56,0	51,0	22,0	55	50	60	EW-DKOL-42-M 48x2-wd-OMD

Reihe / Series S

Druck Pressure	Rohr A.D. Tube O.D.	Gewinde Thread	Ca. Maße Approx. Dimensions								Bestellzeichen Order-Code
			L2	L3	L5	L9	i	SW1	SW2	SW3	
PN	D1	G	L2	L3	L5	L9	i	SW1	SW2	SW3	
800	6	M 12 x 1,5	16,0	40,0	27,0	23,0	12,0	17	12	17	EW-DKOS-06-M 12x1,5-wd-OMD
800	8	M 14 x 1,5	17,0	42,5	27,5	24,0	12,0	19	14	19	EW-DKOS-08-M 14x1,5-wd-OMD
800	10	M 16 x 1,5	17,5	45,0	30,0	25,0	12,0	22	17	22	EW-DKOS-10-M 16x1,5-wd-OMD
630	12	M 18 x 1,5	21,5	48,0	31,0	29,0	12,0	24	17	24	EW-DKOS-12-M 18x1,5-wd-OMD
630	14	M 20 x 1,5	22,0	54,0	35,0	30,0	14,0	27	19	27	EW-DKOS-14-M 20x1,5-wd-OMD
630	16	M 22 x 1,5	24,5	55,0	36,5	33,0	14,0	27	24	30	EW-DKOS-16-M 22x1,5-wd-OMD
420	20	M 27 x 2	26,5	65,0	44,5	37,0	16,0	32	27	36	EW-DKOS-20-M 27x2-wd-OMD
420	25	M 33 x 2	30,0	73,0	50,0	42,0	18,0	41	36	46	EW-DKOS-25-M 33x2-wd-OMD
420	30	M 42 x 2	35,5	78,5	55,0	49,0	20,0	50	41	50	EW-DKOS-30-M 42x2-wd-OMD
420	38	M 48 x 2	41,0	89,0	63,0	57,0	22,0	55	50	60	EW-DKOS-38-M 48x2-wd-OMD

EV - EINSTELLBARE - 45° - WINKEL - VERSCHRAUBUNGEN

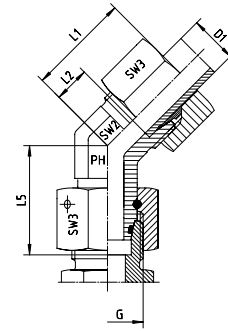
EV - ADJUSTABLE - 45° - ELBOWS



EDELSTAHL / STAINLESS STEEL
VERBINDUNGSTECHNIK
FLUID CONNECTORS

Einstellbare Winkelverschraubungen mit Dichtkegel
und O-Ring FPM
Rohrseitig Schneidringanschluss

With Taper and O-ring - FPM
Cutting Ring Connection at the Tube Connection side



Reihe / Series L

Druck Pressure	Rohr A.D. Tube O.D.	Gewinde Thread	Ca. Maße Approx. Dimensions					Bemerkungen Notes	Bestellzeichen Order-Code
PN	D1	G	L1	L2	L5	SW2	SW3		
500	6	M 12 x 1,5	24,0	9,0	26,0	14	14		EV-DKOL-06
500	8	M 14 x 1,5	27,0	12,0	27,5	14	17		EV-DKOL-08
500	10	M 16 x 1,5	27,0	12,0	29,0	19	19		EV-DKOL-10
400	12	M 18 x 1,5	29,0	14,0	29,5	19	22		EV-DKOL-12
400	15	M 22 x 1,5	32,0	17,0	32,5	22	27		EV-DKOL-15
400	18	M 26 x 1,5	33,0	16,5	35,5	27	32		EV-DKOL-18
250	22	M 30 x 2	35,0	18,5	38,5	30	36		EV-DKOL-22
250	28	M 36 x 2	40,0	23,0	41,5	36	41		EV-DKOL-28
250	35	M 45 x 2	48,0	26,5	51,0	50	50		EV-DKOL-35
250	42	M 52 x 2	49,0	26,0	56,0	50	60		EV-DKOL-42

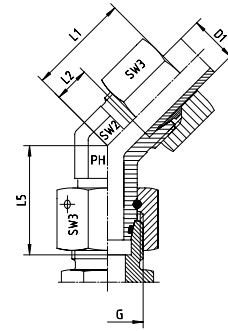
Reihe / Series S

Druck Pressure	Rohr A.D. Tube O.D.	Gewinde Thread	Ca. Maße Approx. Dimensions					Bemerkungen Notes	Bestellzeichen Order-Code
PN	D1	G	L1	L2	L5	SW2	SW3		
800	6	M 14 x 1,5	24,0	9,0	27,0	14	17		EV-DKOS-06
800	8	M 16 x 1,5	27,0	12,0	27,5	19	19		EV-DKOS-08
800	10	M 18 x 1,5	30,0	13,5	30,0	19	22		EV-DKOS-10
630	12	M 20 x 1,5	33,0	16,5	31,0	22	24		EV-DKOS-12
630	16	M 24 x 1,5	34,0	15,5	36,5	27	30		EV-DKOS-16
420	20	M 30 x 2	38,0	16,0	44,5	30	36		EV-DKOS-20
420	25	M 36 x 2	43,0	18,5	50,0	36	46		EV-DKOS-25
420	30	M 42 x 2	50,0	23,5	55,0	50	50		EV-DKOS-30
420	38	M 52 x 2	52,0	21,0	63,0	50	60		EV-DKOS-38



Einstellbare Winkelverschraubungen mit Dichtkegel
und O-Ring FPM
Rohrseitig Schneidringanschluss

With Taper and O-Ring - FPM
Cutting Ring Connection at the Tube Connection side



Reihe / Series L

Druck Pressure	Rohr A.D. Tube O.D.	Gewinde Thread	Ca. Maße Approx. Dimensions					Bemerkungen Notes	Bestellzeichen Order-Code
PN	D1	G	L1	L2	L5	SW2	SW3		
500	6	M 12 x 1,5	24,0	9,0	26,0	14	14		EV-DKOL-06-SC
500	8	M 14 x 1,5	27,0	12,0	27,5	14	17		EV-DKOL-08-SC
500	10	M 16 x 1,5	27,0	12,0	29,0	19	19		EV-DKOL-10-SC
400	12	M 18 x 1,5	29,0	14,0	29,5	19	22		EV-DKOL-12-SC
400	15	M 22 x 1,5	32,0	17,0	32,5	22	27		EV-DKOL-15-SC
400	18	M 26 x 1,5	33,0	16,5	35,5	27	32		EV-DKOL-18-SC
250	22	M 30 x 2	35,0	18,5	38,5	30	36		EV-DKOL-22-SC
250	28	M 36 x 2	40,0	23,0	41,5	36	41		EV-DKOL-28-SC
250	35	M 45 x 2	48,0	26,5	51,0	50	50		EV-DKOL-35-SC
250	42	M 52 x 2	49,0	26,0	56,0	50	60		EV-DKOL-42-SC

Reihe / Series S

Druck Pressure	Rohr A.D. Tube O.D.	Gewinde Thread	Ca. Maße Approx. Dimensions					Bemerkungen Notes	Bestellzeichen Order-Code
PN	D1	G	L1	L2	L5	SW2	SW3		
800	6	M 14 x 1,5	24,0	9,0	27,0	14	17		EV-DKOS-06-SC
800	8	M 16 x 1,5	27,0	12,0	27,5	19	19		EV-DKOS-08-SC
800	10	M 18 x 1,5	30,0	13,5	30,0	19	22		EV-DKOS-10-SC
630	12	M 20 x 1,5	33,0	16,5	31,0	22	24		EV-DKOS-12-SC
630	16	M 24 x 1,5	34,0	15,5	36,5	27	30		EV-DKOS-16-SC
420	20	M 30 x 2	38,0	16,0	44,5	30	36		EV-DKOS-20-SC
420	25	M 36 x 2	43,0	18,5	50,0	36	46		EV-DKOS-25-SC
420	30	M 42 x 2	50,0	23,5	55,0	50	50		EV-DKOS-30-SC
420	38	M 52 x 2	52,0	21,0	63,0	50	60		EV-DKOS-38-SC

EV - EINSTELLBARE - 45° - WINKEL - VERSCHRAUBUNGEN

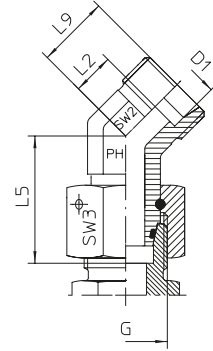
EV - ADJUSTABLE - 45° - ELBOWS



EDELSTAHL / STAINLESS STEEL
VERBINDUNGSTECHNIK
FLUID CONNECTORS

Einstellbare Winkelverschraubungen mit Dichtkegel
und O-Ring FPM
Rohrseitig Schneidringanschluss

With Taper and O-ring - FPM
Cutting Ring Connection at the Tube Connection side



Reihe / Series L

Druck Pressure	Rohr A.D. Tube O.D.	Gewinde Thread	Ca. Maße Approx. Dimensions					Bemerkungen Notes	Bestellzeichen Order-Code
PN	D1	G	L2	L5	L9	SW2	SW3		
500	6	M 12 x 1,5	9,0	26,0	16,0	14,0	14,0		EV-DKOL-06-OMD
500	8	M 14 x 1,5	12,0	27,5	19,0	14,0	17,0		EV-DKOL-08-OMD
500	10	M 16 x 1,5	12,0	29,0	19,0	19,0	19,0		EV-DKOL-10-OMD
400	12	M 18 x 1,5	14,0	29,5	21,0	19,0	22,0		EV-DKOL-12-OMD
400	15	M 22 x 1,5	17,0	32,5	24,0	22,0	27,0		EV-DKOL-15-OMD
400	18	M 26 x 1,5	16,5	35,5	24,0	27,0	32,0		EV-DKOL-18-OMD
250	22	M 30 x 2	18,5	38,5	26,0	30,0	36,0		EV-DKOL-22-OMD
250	28	M 36 x 2	23,0	41,5	30,5	36,0	41,0		EV-DKOL-28-OMD
250	35	M 45 x 2	26,5	51,0	37,0	50,0	50,0		EV-DKOL-35-OMD
250	42	M 52 x 2	26,0	56,0	37,0	50,0	60,0		EV-DKOL-42-OMD

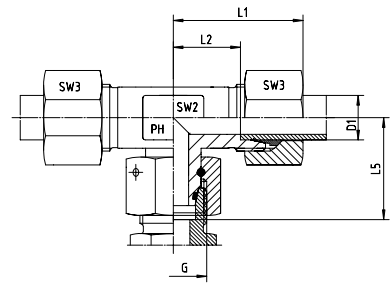
Reihe / Series S

Druck Pressure	Rohr A.D. Tube O.D.	Gewinde Thread	Ca. Maße Approx. Dimensions					Bemerkungen Notes	Bestellzeichen Order-Code
PN	D1	G	L2	L5	L9	SW2	SW3		
800	6	M 14 x 1,5	9,0	27,0	16,0	14,0	17,0		EV-DKOS-06-OMD
800	8	M 16 x 1,5	12,0	27,5	19,0	19,0	19,0		EV-DKOS-08-OMD
800	10	M 18 x 1,5	13,5	30,0	21,0	19,0	22,0		EV-DKOS-10-OMD
630	12	M 20 x 1,5	16,5	31,0	24,0	22,0	24,0		EV-DKOS-12-OMD
630	16	M 24 x 1,5	15,5	36,5	24,0	27,0	30,0		EV-DKOS-16-OMD
420	20	M 30 x 2	16,0	44,5	26,5	30,0	36,0		EV-DKOS-20-OMD
420	25	M 36 x 2	18,5	50,0	30,5	36,0	46,0		EV-DKOS-25-OMD
420	30	M 42 x 2	23,5	55,0	37,0	50,0	50,0		EV-DKOS-30-OMD
420	38	M 52 x 2	21,0	63,0	37,0	50,0	60,0		EV-DKOS-38-OMD



Einstellbare T-Verschraubungen mit Dichtkegel
und O-Ring FPM
Rohrseitig Schneidringanschluss

With Taper and O-ring - FPM
Cutting Ring Connection at the Tube Connection side



Reihe / Series L

Druck Pressure	Rohr A.D. Tube O.D.	Gewinde Thread	Ca. Maße Approx. Dimensions					Bemerkungen Notes	Bestellzeichen Order-Code
PN	D1	G	L1	L2	L5	SW2	SW3		
500	6	M 12 x 1,5	27,0	12,0	26,0	12	14		ET-DKOL-06
500	8	M 14 x 1,5	29,0	14,0	27,5	12	17		ET-DKOL-08
500	10	M 16 x 1,5	30,0	15,0	29,0	14	19		ET-DKOL-10
400	12	M 18 x 1,5	32,0	17,0	29,5	17	22		ET-DKOL-12
400	15	M 22 x 1,5	36,0	21,0	32,5	19	27		ET-DKOL-15
400	18	M 26 x 1,5	40,0	23,5	35,5	24	32		ET-DKOL-18
250	22	M 30 x 2	44,0	27,5	38,5	27	36		ET-DKOL-22
250	28	M 36 x 2	47,0	30,5	41,5	36	41		ET-DKOL-28
250	35	M 45 x 2	56,0	34,5	51,0	41	50		ET-DKOL-35
250	42	M 52 x 2	63,0	40,0	56,0	50	60		ET-DKOL-42

Reihe / Series S

Druck Pressure	Rohr A.D. Tube O.D.	Gewinde Thread	Ca. Maße Approx. Dimensions					Bemerkungen Notes	Bestellzeichen Order-Code
PN	D1	G	L1	L2	L5	SW2	SW3		
800	6	M 14 x 1,5	31,0	16,0	27,0	12	17		ET-DKOS-06
800	8	M 16 x 1,5	32,0	17,0	27,5	14	19		ET-DKOS-08
800	10	M 18 x 1,5	34,0	17,5	30,0	17	22		ET-DKOS-10
630	12	M 20 x 1,5	38,0	21,5	31,0	17	24		ET-DKOS-12
630	14	M 22 x 1,5	40,0	22,0	35,0	19	27		ET-DKOS-14
630	16	M 24 x 1,5	43,0	24,5	36,5	24	30		ET-DKOS-16
420	20	M 30 x 2	48,0	26,5	44,5	27	36		ET-DKOS-20
420	25	M 36 x 2	54,0	30,0	50,0	36	46		ET-DKOS-25
420	30	M 42 x 2	62,0	35,5	55,0	41	50		ET-DKOS-30
420	38	M 52 x 2	72,0	41,0	63,0	50	60		ET-DKOS-38

ET - EINSTELLBARE - T- VERSCHRAUBUNGEN

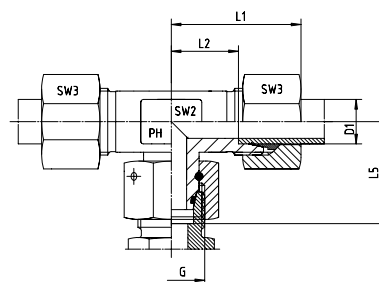
ET - ADJUSTABLE - BRANCH - TEES



EDELSTAHL / STAINLESS STEEL
VERBINDUNGSTECHNIK
FLUID CONNECTORS

Einstellbare T-Verschraubungen mit Dichtkegel
und O-Ring FPM
Rohrseitig Schneidringanschluss

With Taper and O-ring - FPM
Cutting Ring Connection at the Tube Connection side



Reihe / Series L

Druck Pressure	Rohr A.D. Tube O.D.	Gewinde Thread	Ca. Maße Approx. Dimensions					Bemerkungen Notes	Bestellzeichen Order-Code
PN	D1	G	L1	L2	L5	SW2	SW3		
500	6	M 12 x 1,5	27,0	12,0	26,0	12	14		ET-DKOL-06-SC
500	8	M 14 x 1,5	29,0	14,0	27,5	12	17		ET-DKOL-08-SC
500	10	M 16 x 1,5	30,0	15,0	29,0	14	19		ET-DKOL-10-SC
400	12	M 18 x 1,5	32,0	17,0	29,5	17	22		ET-DKOL-12-SC
400	15	M 22 x 1,5	36,0	21,0	32,5	19	27		ET-DKOL-15-SC
400	18	M 26 x 1,5	40,0	23,5	35,5	24	32		ET-DKOL-18-SC
250	22	M 30 x 2	44,0	27,5	38,5	27	36		ET-DKOL-22-SC
250	28	M 36 x 2	47,0	30,5	41,5	36	41		ET-DKOL-28-SC
250	35	M 45 x 2	56,0	34,5	51,0	41	50		ET-DKOL-35-SC
250	42	M 52 x 2	63,0	40,0	56,0	50	60		ET-DKOL-42-SC

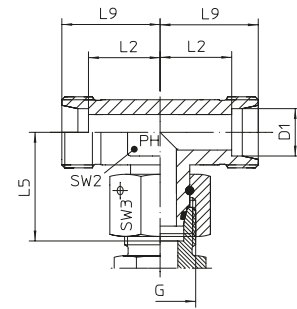
Reihe / Series S

Druck Pressure	Rohr A.D. Tube O.D.	Gewinde Thread	Ca. Maße Approx. Dimensions					Bemerkungen Notes	Bestellzeichen Order-Code
PN	D1	G	L1	L2	L5	SW2	SW3		
800	6	M 14 x 1,5	31,0	16,0	27,0	12	17		ET-DKOS-06-SC
800	8	M 16 x 1,5	32,0	17,0	27,5	14	19		ET-DKOS-08-SC
800	10	M 18 x 1,5	34,0	17,5	30,0	17	22		ET-DKOS-10-SC
630	12	M 20 x 1,5	38,0	21,5	31,0	17	24		ET-DKOS-12-SC
630	14	M 22 x 1,5	40,0	22,0	35,0	19	27		ET-DKOS-14-SC
630	16	M 24 x 1,5	43,0	24,5	36,5	24	30		ET-DKOS-16-SC
420	20	M 30 x 2	48,0	26,5	44,5	27	36		ET-DKOS-20-SC
420	25	M 36 x 2	54,0	30,0	50,0	36	46		ET-DKOS-25-SC
420	30	M 42 x 2	62,0	35,5	55,0	41	50		ET-DKOS-30-SC
420	38	M 52 x 2	72,0	41,0	63,0	50	60		ET-DKOS-38-SC



Einstellbare T-Verschraubungen mit Dichtkegel
und O-Ring FPM
Rohrseitig Schneidringanschluss

With Taper and O-ring - FPM
Cutting Ring Connection at the Tube Connection side



Reihe / Series L

Druck Pressure	Rohr A.D. Tube O.D.	Gewinde Thread	Ca. Maße Approx. Dimensions					Bemerkungen Notes	Bestellzeichen Order-Code
PN	D1	G	L2	L5	L9	SW2	SW3		
500	6	M 12 x 1,5	12,0	26,0	19,0	12	14		ET-DKOL-06-OMD
500	8	M 14 x 1,5	14,0	27,5	21,0	12	17		ET-DKOL-08-OMD
500	10	M 16 x 1,5	15,0	29,0	22,0	14	19		ET-DKOL-10-OMD
400	12	M 18 x 1,5	17,0	29,5	24,0	17	22		ET-DKOL-12-OMD
400	15	M 22 x 1,5	21,0	32,5	28,0	19	27		ET-DKOL-15-OMD
400	18	M 26 x 1,5	23,5	35,5	31,0	24	32		ET-DKOL-18-OMD
250	22	M 30 x 2	27,5	38,5	35,0	27	36		ET-DKOL-22-OMD
250	28	M 36 x 2	30,5	41,5	38,0	36	41		ET-DKOL-28-OMD
250	35	M 45 x 2	34,5	51,0	45,0	41	50		ET-DKOL-35-OMD
250	42	M 52 x 2	40,0	56,0	51,0	50	60		ET-DKOL-42-OMD

Reihe / Series S

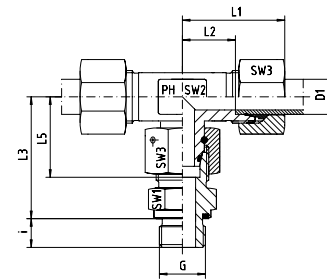
Druck Pressure	Rohr A.D. Tube O.D.	Gewinde Thread	Ca. Maße Approx. Dimensions					Bemerkungen Notes	Bestellzeichen Order-Code
PN	D1	G	L2	L5	L9	SW2	SW3		
800	6	M 14 x 1,5	16,0	27,0	23,0	12	17		ET-DKOS-06-OMD
800	8	M 16 x 1,5	17,0	27,5	24,0	14	19		ET-DKOS-08-OMD
800	10	M 18 x 1,5	17,5	30,0	25,0	17	22		ET-DKOS-10-OMD
630	12	M 20 x 1,5	21,5	31,0	29,0	17	24		ET-DKOS-12-OMD
630	14	M 22 x 1,5	22,0	35,0	30,0	19	27		ET-DKOS-14-OMD
630	16	M 24 x 1,5	24,5	36,5	33,0	24	30		ET-DKOS-16-OMD
420	20	M 30 x 2	26,5	44,5	37,0	27	36		ET-DKOS-20-OMD
420	25	M 36 x 2	30,0	50,0	42,0	36	46		ET-DKOS-25-OMD
420	30	M 42 x 2	35,5	55,0	49,0	41	50		ET-DKOS-30-OMD
420	38	M 52 x 2	41,0	63,0	57,0	50	60		ET-DKOS-38-OMD

ET - EINSTELLBARE - T- VERSCHRAUBUNGEN

ET - ADJUSTABLE - BRANCH - TEES

Einstellbare T-Verschraubungen mit Dichtkegel und O-Ring FPM
Rohrseitig Schneidringanschluss
Einschraubgewinde:
Whitworth-Rohrgewinde - Zylindrisch
wd = Abdichtung durch Profildichtung - FPM

With Taper and O-ring - FPM
Cutting Ring Connection at the Tube Connection side
Thread: BSP - Parallel
wd = Sealing by an Elastomer Profiled Ring - FPM



Reihe / Series L

Druck Pressure	Rohr A.D. Tube O.D.	Gewinde Thread	Ca. Maße Approx. Dimensions								Bestellzeichen Order-Code
PN	D1	G	L1	L2	L3	L5	i	SW1	SW2	SW3	
500	6	G 1/8"	27,0	12,0	34,5	26,0	8,0	14	12	14	ET-DKOL-06-G 1/8"-wd
500	8	G 1/4"	29,0	14,0	37,5	27,5	12,0	17	12	17	ET-DKOL-08-G 1/4"-wd
500	10	G 1/4"	30,0	15,0	40,0	29,0	12,0	19	14	19	ET-DKOL-10-G 1/4"-wd
400	12	G 3/8"	32,0	17,0	42,0	29,5	12,0	22	17	22	ET-DKOL-12-G 3/8"-wd
400	15	G 1/2"	36,0	21,0	46,5	32,5	14,0	27	19	27	ET-DKOL-15-G 1/2"-wd
400	18	G 1/2"	40,0	23,5	50,0	35,5	14,0	27	24	32	ET-DKOL-18-G 1/2"-wd
250	22	G 3/4"	44,0	27,5	65,0	38,5	16,0	32	27	36	ET-DKOL-22-G 3/4"-wd
250	28	G 1"	47,0	30,5	59,0	41,5	18,0	41	36	41	ET-DKOL-28-G 1"-wd
250	35	G 1 1/4"	56,0	34,5	68,5	51,0	20,0	50	41	50	ET-DKOL-35-G 1 1/4"-wd
250	42	G 1 1/2"	63,0	40,0	75,0	56,0	22,0	55	50	60	ET-DKOL-42-G 1 1/2"-wd

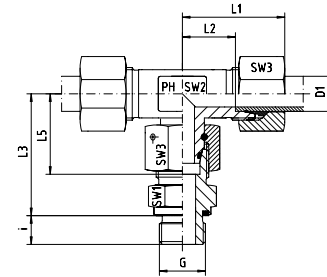
Reihe / Series S

Druck Pressure	Rohr A.D. Tube O.D.	Gewinde Thread	Ca. Maße Approx. Dimensions								Bestellzeichen Order-Code
PN	D1	G	L1	L2	L3	L5	i	SW1	SW2	SW3	
800	6	G 1/4"	31,0	16,0	40,0	27,0	12,0	19	12	17	ET-DKOS-06-G 1/4"-wd
800	8	G 1/4"	32,0	17,0	42,5	27,5	12,0	19	14	19	ET-DKOS-08-G 1/4"-wd
800	10	G 3/8"	34,0	17,5	45,0	30,0	12,0	22	17	22	ET-DKOS-10-G 3/8"-wd
630	12	G 3/8"	38,0	21,5	48,0	31,0	12,0	22	17	24	ET-DKOS-12-G 3/8"-wd
630	14	G 1/2"	40,0	22,0	54,0	35,0	14,0	27	19	27	ET-DKOS-14-G 1/2"-wd
630	16	G 1/2"	43,0	24,5	55,0	36,5	14,0	27	24	30	ET-DKOS-16-G 1/2"-wd
420	20	G 3/4"	48,0	26,5	65,0	44,5	16,0	32	27	36	ET-DKOS-20-G 3/4"-wd
420	25	G 1"	54,0	30,0	73,0	50,0	18,0	41	36	46	ET-DKOS-25-G 1"-wd
420	30	G 1 1/4"	62,0	35,5	78,5	55,0	20,0	50	41	50	ET-DKOS-30-G 1 1/4"-wd
420	38	G 1 1/2"	72,0	41,0	89,0	63,0	22,0	55	50	60	ET-DKOS-38-G 1 1/2"-wd



Einstellbare T-Verschraubungen mit Dichtkegel und O-Ring FPM
Rohrseitig Schneidringanschluss
Einschraubgewinde:
Whitworth-Rohrgewinde - Zylindrisch
wd = Abdichtung durch Profildichtung - FPM

With Taper and O-ring - FPM
Cutting Ring Connection at the Tube Connection side
Thread: BSP - Parallel
wd = Sealing by an Elastomer Profiled Ring - FPM



Reihe / Series L

Druck Pressure	Rohr A.D. Tube O.D.	Gewinde Thread	Ca. Maße Approx. Dimensions								Bestellzeichen Order-Code
PN	D1	G	L1	L2	L3	L5	i	SW1	SW2	SW3	
500	6	G 1/8"	27,0	12,0	34,5	26,0	8,0	14	12	14	ET-DKOL-06-G 1/8"-wd-SC
500	8	G 1/4"	29,0	14,0	37,5	27,5	12,0	17	12	17	ET-DKOL-08-G 1/4"-wd-SC
500	10	G 1/4"	30,0	15,0	40,0	29,0	12,0	19	14	19	ET-DKOL-10-G 1/4"-wd-SC
400	12	G 3/8"	32,0	17,0	42,0	29,5	12,0	22	17	22	ET-DKOL-12-G 3/8"-wd-SC
400	15	G 1/2"	36,0	21,0	46,5	32,5	14,0	27	19	27	ET-DKOL-15-G 1/2"-wd-SC
400	18	G 1/2"	40,0	23,5	50,0	35,5	14,0	27	24	32	ET-DKOL-18-G 1/2"-wd-SC
250	22	G 3/4"	44,0	27,5	65,0	38,5	16,0	32	27	36	ET-DKOL-22-G 3/4"-wd-SC
250	28	G 1"	47,0	30,5	59,0	41,5	18,0	41	36	41	ET-DKOL-28-G 1"-wd-SC
250	35	G 1 1/4"	56,0	34,5	68,5	51,0	20,0	50	41	50	ET-DKOL-35-G 1 1/4"-wd-SC
250	42	G 1 1/2"	63,0	40,0	75,0	56,0	22,0	55	50	60	ET-DKOL-42-G 1 1/2"-wd-SC

Reihe / Series S

Druck Pressure	Rohr A.D. Tube O.D.	Gewinde Thread	Ca. Maße Approx. Dimensions								Bestellzeichen Order-Code
PN	D1	G	L1	L2	L3	L5	i	SW1	SW2	SW3	
800	6	G 1/4"	31,0	16,0	40,0	27,0	12,0	19	12	17	ET-DKOS-06-G 1/4"-wd-SC
800	8	G 1/4"	32,0	17,0	42,5	27,5	12,0	19	14	19	ET-DKOS-08-G 1/4"-wd-SC
800	10	G 3/8"	34,0	17,5	45,0	30,0	12,0	22	17	22	ET-DKOS-10-G 3/8"-wd-SC
630	12	G 3/8"	38,0	21,5	48,0	31,0	12,0	22	17	24	ET-DKOS-12-G 3/8"-wd-SC
630	14	G 1/2"	40,0	22,0	54,0	35,0	14,0	27	19	27	ET-DKOS-14-G 1/2"-wd-SC
630	16	G 1/2"	43,0	24,5	55,0	36,5	14,0	27	24	30	ET-DKOS-16-G 1/2"-wd-SC
420	20	G 3/4"	48,0	26,5	65,0	44,5	16,0	32	27	36	ET-DKOS-20-G 3/4"-wd-SC
420	25	G 1"	54,0	30,0	73,0	50,0	18,0	41	36	46	ET-DKOS-25-G 1"-wd-SC
420	30	G 1 1/4"	62,0	35,5	78,5	55,0	20,0	50	41	50	ET-DKOS-30-G 1 1/4"-wd-SC
420	38	G 1 1/2"	72,0	41,0	89,0	63,0	22,0	55	50	60	ET-DKOS-38-G 1 1/2"-wd-SC

ET - EINSTELLBARE - T-VERSCHRAUBUNGEN

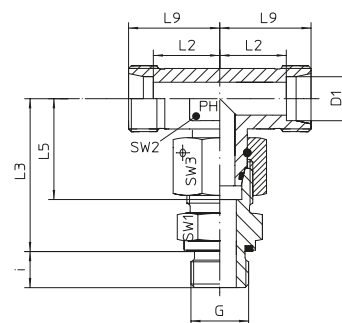
ET - ADJUSTABLE - BRANCH - TEES



EDELSTAHL / STAINLESS STEEL
VERBINDUNGSTECHNIK
FLUID CONNECTORS

Einstellbare T-Verschraubungen mit Dichtkegel und O-Ring FPM
Rohrseitig Schneidringanschluss
Einschraubgewinde:
Whitworth-Rohrgewinde - Zylindrisch
wd = Abdichtung durch Profildichtung - FPM

With Taper and O-ring - FPM
Cutting Ring Connection at the Tube Connection side
Thread: BSP - Parallel
wd = Sealing by an Elastomer Profiled Ring - FPM



Reihe / Series L

Druck Pressure	Rohr A.D. Tube O.D.	Gewinde Thread	Ca. Maße Approx. Dimensions								Bestellzeichen Order-Code
			L2	L3	L5	L9	i	SW1	SW2	SW3	
PN	D1	G	L2	L3	L5	L9	i	SW1	SW2	SW3	
500	6	G 1/8"	12,0	34,5	26,0	19,0	8,0	14	12	14	ET-DKOL-06-G 1/8"-wd-OMD
500	8	G 1/4"	14,0	37,5	27,5	21,0	12,0	17	12	17	ET-DKOL-08-G 1/4"-wd-OMD
500	10	G 1/4"	15,0	40,0	29,0	22,0	12,0	19	14	19	ET-DKOL-10-G 1/4"-wd-OMD
400	12	G 3/8"	17,0	42,0	29,5	24,0	12,0	22	17	22	ET-DKOL-12-G 3/8"-wd-OMD
400	15	G 1/2"	21,0	46,5	32,5	28,0	14,0	27	19	27	ET-DKOL-15-G 1/2"-wd-OMD
400	18	G 1/2"	23,5	50,0	35,5	31,0	14,0	27	24	32	ET-DKOL-18-G 1/2"-wd-OMD
250	22	G 3/4"	27,5	65,0	38,5	35,0	16,0	32	27	36	ET-DKOL-22-G 3/4"-wd-OMD
250	28	G 1"	30,5	59,0	41,5	38,0	18,0	41	36	41	ET-DKOL-28-G 1"-wd-OMD
250	35	G 1 1/4"	34,5	68,5	51,0	45,0	20,0	50	41	50	ET-DKOL-35-G 1 1/4"-wd-OMD
250	42	G 1 1/2"	40,0	75,0	56,0	51,0	22,0	55	50	60	ET-DKOL-42-G 1 1/2"-wd-OMD

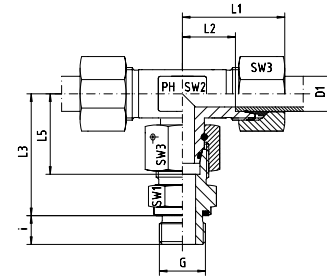
Reihe / Series S

Druck Pressure	Rohr A.D. Tube O.D.	Gewinde Thread	Ca. Maße Approx. Dimensions								Bestellzeichen Order-Code
			L2	L3	L5	L9	i	SW1	SW2	SW3	
PN	D1	G	L2	L3	L5	L9	i	SW1	SW2	SW3	
800	6	G 1/4"	16,0	40,0	27,0	23,0	12,0	19	12	17	ET-DKOS-06-G 1/4"-wd-OMD
800	8	G 1/4"	17,0	42,5	27,5	24,0	12,0	19	14	19	ET-DKOS-08-G 1/4"-wd-OMD
800	10	G 3/8"	17,5	45,0	30,0	25,0	12,0	22	17	22	ET-DKOS-10-G 3/8"-wd-OMD
630	12	G 3/8"	21,5	48,0	31,0	29,0	12,0	22	17	24	ET-DKOS-12-G 3/8"-wd-OMD
630	14	G 1/2"	22,0	54,0	35,0	30,0	14,0	27	19	27	ET-DKOS-14-G 1/2"-wd-OMD
630	16	G 1/2"	24,5	55,0	36,5	33,0	14,0	27	24	30	ET-DKOS-16-G 1/2"-wd-OMD
420	20	G 3/4"	26,5	65,0	44,5	37,0	16,0	32	27	36	ET-DKOS-20-G 3/4"-wd-OMD
420	25	G 1"	30,0	73,0	50,0	42,0	18,0	41	36	46	ET-DKOS-25-G 1"-wd-OMD
420	30	G 1 1/4"	35,5	78,5	55,0	49,0	20,0	50	41	50	ET-DKOS-30-G 1 1/4"-wd-OMD
420	38	G 1 1/2"	41,0	89,0	63,0	57,0	22,0	55	50	60	ET-DKOS-38-G 1 1/2"-wd-OMD



Einstellbare T-Verschraubungen mit Dichtkegel
und O-Ring FPM
Rohrseitig Schneidringanschluss
Einschraubgewinde:
Metrisches Feingewinde - Zylindrisch
wd = Abdichtung durch Profildichtung - FPM

With Taper and O-ring - FPM
Cutting Ring Connection at the Tube Connection side
Thread: Metric - Parallel
wd = Sealing by an Elastomer Profiled Ring - FPM



Reihe / Series L

Druck Pressure	Rohr A.D. Tube O.D.	Gewinde Thread	Ca. Maße Approx. Dimensions								Bestellzeichen Order-Code
PN	D1	G	L1	L2	L3	L5	i	SW1	SW2	SW3	
500	6	M 10 x 1	27,0	12,0	34,5	26,0	8,0	14	12	14	ET-DKOL-06-M 10x1-wd
500	8	M 12 x 1,5	29,0	14,0	37,5	27,5	12,0	17	12	17	ET-DKOL-08-M 12x1,5-wd
500	10	M 14 x 1,5	30,0	15,0	40,0	29,0	12,0	19	14	19	ET-DKOL-10-M 14x1,5-wd
400	12	M 16 x 1,5	32,0	17,0	42,0	29,5	12,0	22	17	22	ET-DKOL-12-M 16x1,5-wd
400	15	M 18 x 1,5	36,0	21,0	46,0	32,5	12,0	24	19	27	ET-DKOL-15-M 18x1,5-wd
400	18	M 22 x 1,5	40,0	23,5	50,0	35,5	14,0	27	24	32	ET-DKOL-18-M 22x1,5-wd
250	22	M 26 x 1,5	44,0	27,5	55,0	38,5	16,0	32	27	36	ET-DKOL-22-M 26x1,5-wd
250	28	M 33 x 2	47,0	30,5	59,0	41,5	18,0	41	36	41	ET-DKOL-28-M 33x2-wd
250	35	M 42 x 2	56,0	34,5	68,5	51,0	20,0	50	41	50	ET-DKOL-35-M 42x2-wd
250	42	M 48 x 2	63,0	40,0	75,0	56,0	22,0	55	50	60	ET-DKOL-42-M 48x2-wd

Reihe / Series S

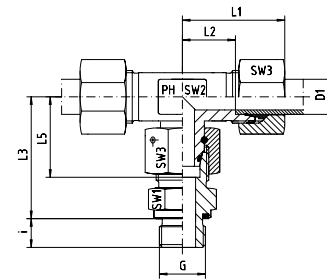
Druck Pressure	Rohr A.D. Tube O.D.	Gewinde Thread	Ca. Maße Approx. Dimensions								Bestellzeichen Order-Code
PN	D1	G	L1	L2	L3	L5	i	SW1	SW2	SW3	
800	6	M 12 x 1,5	31,0	16,0	40,0	27,0	12,0	17	12	17	ET-DKOS-06-M 12x1,5-wd
800	8	M 14 x 1,5	32,0	17,0	42,5	27,5	12,0	19	14	19	ET-DKOS-08-M 14x1,5-wd
800	10	M 16 x 1,5	34,0	17,5	45,0	30,0	12,0	22	17	22	ET-DKOS-10-M 16x1,5-wd
630	12	M 18 x 1,5	38,0	21,5	48,0	31,0	12,0	24	17	24	ET-DKOS-12-M 18x1,5-wd
630	14	M 20 x 1,5	40,0	22,0	54,0	35,0	14,0	27	19	27	ET-DKOS-14-M 20x1,5-wd
630	16	M 22 x 1,5	43,0	24,5	55,0	36,5	14,0	27	24	30	ET-DKOS-16-M 22x1,5-wd
420	20	M 27 x 2	48,0	26,5	65,0	44,5	16,0	32	27	36	ET-DKOS-20-M 27x2-wd
420	25	M 33 x 2	54,0	30,0	73,0	50,0	18,0	41	36	46	ET-DKOS-25-M 33x2-wd
420	30	M 42 x 2	62,0	35,5	78,5	55,0	20,0	50	41	50	ET-DKOS-30-M 42x2-wd
420	38	M 48 x 2	72,0	41,0	89,0	63,0	22,0	55	50	60	ET-DKOS-38-M 48x2-wd

ET - EINSTELLBARE - T- VERSCHRAUBUNGEN

ET - ADJUSTABLE - BRANCH - TEES

Einstellbare T-Verschraubungen mit Dichtkegel und O-Ring FPM
Rohrseitig Schneidringanschluss
Einschraubgewinde:
Metrisches Feingewinde - Zylindrisch
wd = Abdichtung durch Profildichtung - FPM

With Taper and O-ring - FPM
Cutting Ring Connection at the Tube Connection side
Thread: Metric - Parallel
wd = Sealing by an Elastomer Profiled Ring - FPM



Reihe / Series L

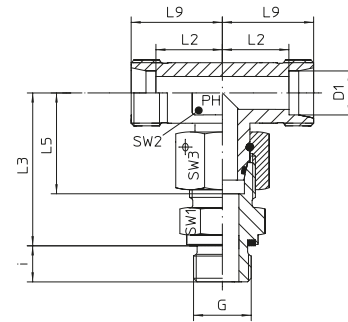
Druck Pressure	Rohr A.D. Tube O.D.	Gewinde Thread	Ca. Maße Approx. Dimensions								Bestellzeichen Order-Code
PN	D1	G	L1	L2	L3	L5	i	SW1	SW2	SW3	
500	6	M 10 x 1	27,0	12,0	34,5	26,0	8,0	14	12	14	ET-DKOL-06-M 10x1-wd-SC
500	8	M 12 x 1,5	29,0	14,0	37,5	27,5	12,0	17	12	17	ET-DKOL-08-M 12x1,5-wd-SC
500	10	M 14 x 1,5	30,0	15,0	40,0	29,0	12,0	19	14	19	ET-DKOL-10-M 14x1,5-wd-SC
400	12	M 16 x 1,5	32,0	17,0	42,0	29,5	12,0	22	17	22	ET-DKOL-12-M 16x1,5-wd-SC
400	15	M 18 x 1,5	36,0	21,0	46,0	32,5	12,0	24	19	27	ET-DKOL-15-M 18x1,5-wd-SC
400	18	M 22 x 1,5	40,0	23,5	50,0	35,5	14,0	27	24	32	ET-DKOL-18-M 22x1,5-wd-SC
250	22	M 26 x 1,5	44,0	27,5	55,0	38,5	16,0	32	27	36	ET-DKOL-22-M 26x1,5-wd-SC
250	28	M 33 x 2	47,0	30,5	59,0	41,5	18,0	41	36	41	ET-DKOL-28-M 33x2-wd-SC
250	35	M 42 x 2	56,0	34,5	68,5	51,0	20,0	50	41	50	ET-DKOL-35-M 42x2-wd-SC
250	42	M 48 x 2	63,0	40,0	75,0	56,0	22,0	55	50	60	ET-DKOL-42-M 48x2-wd-SC

Reihe / Series S

Druck Pressure	Rohr A.D. Tube O.D.	Gewinde Thread	Ca. Maße Approx. Dimensions								Bestellzeichen Order-Code
PN	D1	G	L1	L2	L3	L5	i	SW1	SW2	SW3	
800	6	M 12 x 1,5	31,0	16,0	40,0	27,0	12,0	17	12	17	ET-DKOS-06-M 12x1,5-wd-SC
800	8	M 14 x 1,5	32,0	17,0	42,5	27,5	12,0	19	14	19	ET-DKOS-08-M 14x1,5-wd-SC
800	10	M 16 x 1,5	34,0	17,5	45,0	30,0	12,0	22	17	22	ET-DKOS-10-M 16x1,5-wd-SC
630	12	M 18 x 1,5	38,0	21,5	48,0	31,0	12,0	24	17	24	ET-DKOS-12-M 18x1,5-wd-SC
630	14	M 20 x 1,5	40,0	22,0	54,0	35,0	14,0	27	19	27	ET-DKOS-14-M 20x1,5-wd-SC
630	16	M 22 x 1,5	43,0	24,5	55,0	36,5	14,0	27	24	30	ET-DKOS-16-M 22x1,5-wd-SC
420	20	M 27 x 2	48,0	26,5	65,0	44,5	16,0	32	27	36	ET-DKOS-20-M 27x2-wd-SC
420	25	M 33 x 2	54,0	30,0	73,0	50,0	18,0	41	36	46	ET-DKOS-25-M 33x2-wd-SC
420	30	M 42 x 2	62,0	35,5	78,5	55,0	20,0	50	41	50	ET-DKOS-30-M 42x2-wd-SC
420	38	M 48 x 2	72,0	41,0	89,0	63,0	22,0	55	50	60	ET-DKOS-38-M 48x2-wd-SC



Einstellbare T-Verschraubungen mit Dichtkegel
und O-Ring FPM
Rohrseitig Schneidringanschluss
Einschraubgewinde:
Metrisches Feingewinde - Zylindrisch
wd = Abdichtung durch Profildichtung - FPM



With Taper and O-ring - FPM
Cutting Ring Connection at the Tube Connection side
Thread: Metric - Parallel
wd = Sealing by an Elastomer Profiled Ring - FPM

Reihe / Series L

Druck Pressure	Rohr A.D. Tube O.D.	Gewinde Thread									Bestellzeichen Order-Code
PN	D1	G	L2	L3	L5	L9	i	SW1	SW2	SW3	
500	6	M 10 x 1	12,0	34,5	26,0	19,0	8,0	14	12	14	ET-DKOL-06-M 10x1-wd-OMD
500	8	M 12 x 1,5	14,0	37,5	27,5	21,0	12,0	17	12	17	ET-DKOL-08-M 12x1,5-wd-OMD
500	10	M 14 x 1,5	15,0	40,0	29,0	22,0	12,0	19	14	19	ET-DKOL-10-M 14x1,5-wd-OMD
400	12	M 16 x 1,5	17,0	42,0	29,5	24,0	12,0	22	17	22	ET-DKOL-12-M 16x1,5-wd-OMD
400	15	M 18 x 1,5	21,0	46,0	32,5	28,0	12,0	24	19	27	ET-DKOL-15-M 18x1,5-wd-OMD
400	18	M 22 x 1,5	23,5	50,0	35,5	31,0	14,0	27	24	32	ET-DKOL-18-M 22x1,5-wd-OMD
250	22	M 26 x 1,5	27,5	55,0	38,5	35,0	16,0	32	27	36	ET-DKOL-22-M 26x1,5-wd-OMD
250	28	M 33 x 2	30,5	59,0	41,5	38,0	18,0	41	36	41	ET-DKOL-28-M 33x2-wd-OMD
250	35	M 42 x 2	34,5	68,5	51,0	45,0	20,0	50	41	50	ET-DKOL-35-M 42x2-wd-OMD
250	42	M 48 x 2	40,0	75,0	56,0	51,0	22,0	55	50	60	ET-DKOL-42-M 48x2-wd-OMD

Reihe / Series S

Druck Pressure	Rohr A.D. Tube O.D.	Gewinde Thread	Ca. Maße Approx. Dimensions								Bestellzeichen Order-Code
PN	D1	G	L2	L3	L5	L9	i	SW1	SW2	SW3	
800	6	M 12 x 1,5	16,0	40,0	27,0	23,0	12,0	17	12	17	ET-DKOS-06-M 12x1,5-wd-OMD
800	8	M 14 x 1,5	17,0	42,5	27,5	24,0	12,0	19	14	19	ET-DKOS-08-M 14x1,5-wd-OMD
800	10	M 16 x 1,5	17,5	45,0	30,0	25,0	12,0	22	17	22	ET-DKOS-10-M 16x1,5-wd-OMD
630	12	M 18 x 1,5	21,5	48,0	31,0	29,0	12,0	24	17	24	ET-DKOS-12-M 18x1,5-wd-OMD
630	14	M 20 x 1,5	22,0	54,0	35,0	30,0	14,0	27	19	27	ET-DKOS-14-M 20x1,5-wd-OMD
630	16	M 22 x 1,5	24,5	55,0	36,5	33,0	14,0	27	24	30	ET-DKOS-16-M 22x1,5-wd-OMD
420	20	M 27 x 2	26,5	65,0	44,5	37,0	16,0	32	27	36	ET-DKOS-20-M 27x2-wd-OMD
420	25	M 33 x 2	30,0	73,0	50,0	42,0	18,0	41	36	46	ET-DKOS-25-M 33x2-wd-OMD
420	30	M 42 x 2	35,5	78,5	55,0	49,0	20,0	50	41	50	ET-DKOS-30-M 42x2-wd-OMD
420	38	M 48 x 2	41,0	89,0	63,0	57,0	22,0	55	50	60	ET-DKOS-38-M 48x2-wd-OMD

EL - EINSTELLBARE - L- VERSCHRAUBUNGEN

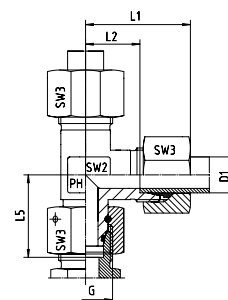
EL - ADJUSTABLE - RUN - TEES



EDELSTAHL / STAINLESS STEEL
VERBINDUNGSTECHNIK
FLUID CONNECTORS

Einstellbare L-Verschraubungen mit Dichtkegel
und O-Ring FPM
Rohrseitig Schneidringanschluss

With Taper and O-Ring - FPM
Cutting Ring Connection at the Tube Connection side



Reihe / Series L

Druck Pressure	Rohr A.D. Tube O.D.	Gewinde Thread	Ca. Maße Approx. Dimensions					Bemerkungen Notes	Bestellzeichen Order-Code
PN	D1	G	L1	L2	L5	SW2	SW3		
500	6	M 12 x 1,5	27,0	12,0	26,0	12	14		EL-DKOL-06
500	8	M 14 x 1,5	29,0	14,0	27,5	12	17		EL-DKOL-08
500	10	M 16 x 1,5	30,0	15,0	29,0	14	19		EL-DKOL-10
400	12	M 18 x 1,5	32,0	17,0	29,5	17	22		EL-DKOL-12
400	15	M 22 x 1,5	36,0	21,0	32,5	19	27		EL-DKOL-15
400	18	M 26 x 1,5	40,0	23,5	35,5	24	32		EL-DKOL-18
250	22	M 30 x 2	44,0	27,5	38,5	27	36		EL-DKOL-22
250	28	M 36 x 2	47,0	30,5	41,5	36	41		EL-DKOL-28
250	35	M 45 x 2	56,0	34,5	51,0	41	50		EL-DKOL-35
250	42	M 52 x 2	63,0	40,0	56,0	50	60		EL-DKOL-42

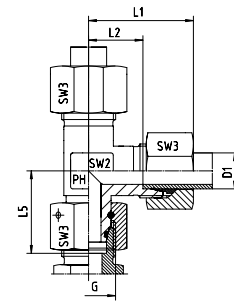
Reihe / Series S

Druck Pressure	Rohr A.D. Tube O.D.	Gewinde Thread	Ca. Maße Approx. Dimensions					Bemerkungen Notes	Bestellzeichen Order-Code
PN	D1	G	L1	L2	L5	SW2	SW3		
800	6	M 14 x 1,5	31,0	16,0	27,0	12	17		EL-DKOS-06
800	8	M 16 x 1,5	32,0	17,0	27,5	14	19		EL-DKOS-08
800	10	M 18 x 1,5	34,0	17,5	30,0	17	22		EL-DKOS-10
630	12	M 20 x 1,5	38,0	21,5	31,0	17	24		EL-DKOS-12
630	14	M 22 x 1,5	40,0	22,0	35,0	19	27		EL-DKOS-14
630	16	M 24 x 1,5	43,0	24,5	36,5	24	30		EL-DKOS-16
420	20	M 30 x 2	48,0	26,5	44,5	27	36		EL-DKOS-20
420	25	M 36 x 2	54,0	30,0	50,0	36	46		EL-DKOS-25
420	30	M 42 x 2	62,0	35,5	55,0	41	50		EL-DKOS-30
420	38	M 52 x 2	72,0	41,0	63,0	50	60		EL-DKOS-38



Einstellbare L-Verschraubungen mit Dichtkegel
und O-Ring FPM
Rohrseitig Schneidringanschluss

With Taper and O-Ring - FPM
Cutting Ring Connection at the Tube Connection side



Reihe / Series L

Druck Pressure	Rohr A.D. Tube O.D.	Gewinde Thread	Ca. Maße Approx. Dimensions					Bemerkungen Notes	Bestellzeichen Order-Code
PN	D1	G	L1	L2	L5	SW2	SW3		
500	6	M 12 x 1,5	27,0	12,0	26,0	12	14		EL-DKOL-06-SC
500	8	M 14 x 1,5	29,0	14,0	27,5	12	17		EL-DKOL-08-SC
500	10	M 16 x 1,5	30,0	15,0	29,0	14	19		EL-DKOL-10-SC
400	12	M 18 x 1,5	32,0	17,0	29,5	17	22		EL-DKOL-12-SC
400	15	M 22 x 1,5	36,0	21,0	32,5	19	27		EL-DKOL-15-SC
400	18	M 26 x 1,5	40,0	23,5	35,5	24	32		EL-DKOL-18-SC
250	22	M 30 x 2	44,0	27,5	38,5	27	36		EL-DKOL-22-SC
250	28	M 36 x 2	47,0	30,5	41,5	36	41		EL-DKOL-28-SC
250	35	M 45 x 2	56,0	34,5	51,0	41	50		EL-DKOL-35-SC
250	42	M 52 x 2	63,0	40,0	56,0	50	60		EL-DKOL-42-SC

Reihe / Series S

Druck Pressure	Rohr A.D. Tube O.D.	Gewinde Thread	Ca. Maße Approx. Dimensions					Bemerkungen Notes	Bestellzeichen Order-Code
PN	D1	G	L1	L2	L5	SW2	SW3		
800	6	M 14 x 1,5	31,0	16,0	27,0	12	17		EL-DKOS-06-SC
800	8	M 16 x 1,5	32,0	17,0	27,5	14	19		EL-DKOS-08-SC
800	10	M 18 x 1,5	34,0	17,5	30,0	17	22		EL-DKOS-10-SC
630	12	M 20 x 1,5	38,0	21,5	31,0	17	24		EL-DKOS-12-SC
630	14	M 22 x 1,5	40,0	22,0	35,0	19	27		EL-DKOS-14-SC
630	16	M 24 x 1,5	43,0	24,5	36,5	24	30		EL-DKOS-16-SC
420	20	M 30 x 2	48,0	26,5	44,5	27	36		EL-DKOS-20-SC
420	25	M 36 x 2	54,0	30,0	50,0	36	46		EL-DKOS-25-SC
420	30	M 42 x 2	62,0	35,5	55,0	41	50		EL-DKOS-30-SC
420	38	M 52 x 2	72,0	41,0	63,0	50	60		EL-DKOS-38-SC

EL - EINSTELLBARE - L- VERSCHRAUBUNGEN

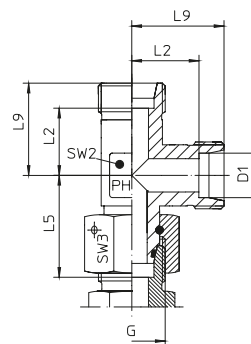
EL - ADJUSTABLE - RUN - TEES



EDELSTAHL / STAINLESS STEEL
VERBINDUNGSTECHNIK
FLUID CONNECTORS

Einstellbare L-Verschraubungen mit Dichtkegel
und O-Ring FPM
Rohrseitig Schneidringanschluss

With Taper and O-Ring - FPM
Cutting Ring Connection at the Tube Connection side



Reihe / Series L

Druck Pressure	Rohr A.D. Tube O.D.	Gewinde Thread	Ca. Maße Approx. Dimensions					Bemerkungen Notes	Bestellzeichen Order-Code
PN	D1	G	L2	L5	L9	SW2	SW3		
500	6	M 12 x 1,5	12,0	26,0	19,0	12	14		EL-DKOL-06-OMD
500	8	M 14 x 1,5	14,0	27,5	21,0	12	17		EL-DKOL-08-OMD
500	10	M 16 x 1,5	15,0	29,0	22,0	14	19		EL-DKOL-10-OMD
400	12	M 18 x 1,5	17,0	29,5	24,0	17	22		EL-DKOL-12-OMD
400	15	M 22 x 1,5	21,0	32,5	28,0	19	27		EL-DKOL-15-OMD
400	18	M 26 x 1,5	23,5	35,5	31,0	24	32		EL-DKOL-18-OMD
250	22	M 30 x 2	27,5	38,5	35,0	27	36		EL-DKOL-22-OMD
250	28	M 36 x 2	30,5	41,5	38,0	36	41		EL-DKOL-28-OMD
250	35	M 45 x 2	34,5	51,0	45,0	41	50		EL-DKOL-35-OMD
250	42	M 52 x 2	40,0	56,0	51,0	50	60		EL-DKOL-42-OMD

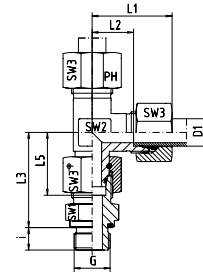
Reihe / Series S

Druck Pressure	Rohr A.D. Tube O.D.	Gewinde Thread	Ca. Maße Approx. Dimensions					Bemerkungen Notes	Bestellzeichen Order-Code
PN	D1	G	L2	L5	L9	SW2	SW3		
800	6	M 14 x 1,5	16,0	27,0	23,0	12	17		EL-DKOS-06-OMD
800	8	M 16 x 1,5	17,0	27,5	24,0	14	19		EL-DKOS-08-OMD
800	10	M 18 x 1,5	17,5	30,0	25,0	17	22		EL-DKOS-10-OMD
630	12	M 20 x 1,5	21,5	31,0	29,0	17	24		EL-DKOS-12-OMD
630	14	M 22 x 1,5	22,0	35,0	30,0	19	27		EL-DKOS-14-OMD
630	16	M 24 x 1,5	24,5	36,5	33,0	24	30		EL-DKOS-16-OMD
420	20	M 30 x 2	26,5	44,5	37,0	27	36		EL-DKOS-20-OMD
420	25	M 36 x 2	30,0	50,0	42,0	36	46		EL-DKOS-25-OMD
420	30	M 42 x 2	35,5	55,0	49,0	41	50		EL-DKOS-30-OMD
420	38	M 52 x 2	41,0	63,0	57,0	50	60		EL-DKOS-38-OMD



Einstellbare L-Verschraubungen mit Dichtkegel
und O-Ring FPM
Rohrseitig Schneidringanschluss
Einschraubgewinde:
Whitworth-Rohrgewinde - Zylindrisch
wd = Abdichtung durch Profildichtung - FPM

With Taper and O-Ring - FPM
Cutting Ring Connection at the Tube Connection side
Thread: BSP - Parallel
wd = Sealing by an Elastomer Profiled Ring - FPM



Reihe / Series L

Druck Pressure	Rohr A.D. Tube O.D.	Gewinde Thread	Ca. Maße Approx. Dimensions								Bestellzeichen Order-Code
			L1	L2	L3	L5	i	SW1	SW2	SW3	
PN	D1	G	L1	L2	L3	L5	i	SW1	SW2	SW3	
500	6	G 1/8"	27,0	12,0	34,5	26,0	8,0	14	12	14	EL-DKOL-06-G 1/8"-wd
500	8	G 1/4"	29,0	14,0	37,5	27,5	12,0	19	12	17	EL-DKOL-08-G 1/4"-wd
500	10	G 1/4"	30,0	15,0	40,0	29,0	12,0	19	14	19	EL-DKOL-10-G 1/4"-wd
400	12	G 3/8"	32,0	17,0	42,0	29,5	12,0	22	17	22	EL-DKOL-12-G 3/8"-wd
400	15	G 1/2"	36,0	21,0	46,5	32,5	14,0	27	19	27	EL-DKOL-15-G 1/2"-wd
400	18	G 1/2"	40,0	23,5	50,0	35,5	14,0	27	24	32	EL-DKOL-18-G 1/2"-wd
250	22	G 3/4"	44,0	27,5	55,0	38,5	16,0	32	27	36	EL-DKOL-22-G 3/4"-wd
250	28	G 1"	47,0	30,5	59,0	41,5	18,0	41	36	41	EL-DKOL-28-G 1"-wd
250	35	G 1 1/4"	56,0	34,5	68,5	51,0	20,0	50	41	50	EL-DKOL-35-G 1 1/4"-wd
250	42	G 1 1/2"	63,0	40,0	75,0	56,0	22,0	55	50	60	EL-DKOL-42-G 1 1/2"-wd

Reihe / Series S

Druck Pressure	Rohr A.D. Tube O.D.	Gewinde Thread	Ca. Maße Approx. Dimensions								Bestellzeichen Order-Code
			L1	L2	L3	L5	i	SW1	SW2	SW3	
PN	D1	G	L1	L2	L3	L5	i	SW1	SW2	SW3	
800	6	G 1/4"	31,0	16,0	40,0	27,0	12,0	19	12	17	EL-DKOS-06-G 1/4"-wd
800	8	G 1/4"	32,0	17,0	42,5	27,5	12,0	19	14	19	EL-DKOS-08-G 1/4"-wd
800	10	G 3/8"	34,0	17,5	45,0	30,0	12,0	22	17	22	EL-DKOS-10-G 3/8"-wd
630	12	G 3/8"	38,0	21,5	48,0	31,0	12,0	22	17	24	EL-DKOS-12-G 3/8"-wd
630	14	G 1/2"	40,0	22,0	54,0	35,0	14,0	27	19	27	EL-DKOS-14-G 1/2"-wd
630	16	G 1/2"	43,0	24,5	55,0	36,5	14,0	27	24	30	EL-DKOS-16-G 1/2"-wd
420	20	G 3/4"	48,0	26,5	65,0	44,5	16,0	32	27	36	EL-DKOS-20-G 3/4"-wd
420	25	G 1"	54,0	30,0	73,0	50,0	18,0	41	36	46	EL-DKOS-25-G 1"-wd
420	30	G 1 1/4"	62,0	35,5	78,5	55,0	20,0	50	41	50	EL-DKOS-30-G 1 1/4"-wd
420	38	G 1 1/2"	72,0	41,0	89,0	63,0	22,0	55	50	60	EL-DKOS-38-G 1 1/2"-wd

EL - EINSTELLBARE - L- VERSCHRAUBUNGEN

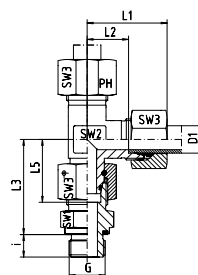
EL - ADJUSTABLE - RUN - TEES



EDELSTAHL / STAINLESS STEEL
VERBINDUNGSTECHNIK
FLUID CONNECTORS

Einstellbare L-Verschraubungen mit Dichtkegel
und O-Ring FPM
Rohrseitig Schneidringanschluss
Einschraubgewinde:
Whitworth-Rohrgewinde - Zylindrisch
wd = Abdichtung durch Profildichtung - FPM

With Taper and O-Ring - FPM
Cutting Ring Connection at the Tube Connection side
Thread: BSP - Parallel
wd = Sealing by an Elastomer Profiled Ring - FPM



Reihe / Series L

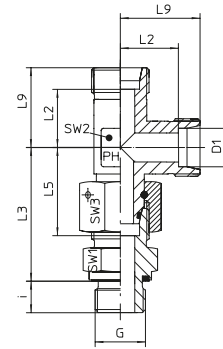
Druck Pressure	Rohr A.D. Tube O.D.	Gewinde Thread	Ca. Maße Approx. Dimensions								Bestellzeichen Order-Code
			L1	L2	L3	L5	i	SW1	SW2	SW3	
PN	D1	G	L1	L2	L3	L5	i	SW1	SW2	SW3	
500	6	G 1/8"	27,0	12,0	34,5	26,0	8,0	14	12	14	EL-DKOL-06-G 1/8"-wd-SC
500	8	G 1/4"	29,0	14,0	37,5	27,5	12,0	19	12	17	EL-DKOL-08-G 1/4"-wd-SC
500	10	G 1/4"	30,0	15,0	40,0	29,0	12,0	19	14	19	EL-DKOL-10-G 1/4"-wd-SC
400	12	G 3/8"	32,0	17,0	42,0	29,5	12,0	22	17	22	EL-DKOL-12-G 3/8"-wd-SC
400	15	G 1/2"	36,0	21,0	46,5	32,5	14,0	27	19	27	EL-DKOL-15-G 1/2"-wd-SC
400	18	G 1/2"	40,0	23,5	50,0	35,5	14,0	27	24	32	EL-DKOL-18-G 1/2"-wd-SC
250	22	G 3/4"	44,0	27,5	55,0	38,5	16,0	32	27	36	EL-DKOL-22-G 3/4"-wd-SC
250	28	G 1"	47,0	30,5	59,0	41,5	18,0	41	36	41	EL-DKOL-28-G 1"-wd-SC
250	35	G 1 1/4"	56,0	34,5	68,5	51,0	20,0	50	41	50	EL-DKOL-35-G 1 1/4"-wd-SC
250	42	G 1 1/2"	63,0	40,0	75,0	56,0	22,0	55	50	60	EL-DKOL-42-G 1 1/2"-wd-SC

Reihe / Series S

Druck Pressure	Rohr A.D. Tube O.D.	Gewinde Thread	Ca. Maße Approx. Dimensions								Bestellzeichen Order-Code
			L1	L2	L3	L5	i	SW1	SW2	SW3	
PN	D1	G	L1	L2	L3	L5	i	SW1	SW2	SW3	
800	6	G 1/4"	31,0	16,0	40,0	27,0	12,0	19	12	17	EL-DKOS-06-G 1/4"-wd-SC
800	8	G 1/4"	32,0	17,0	42,5	27,5	12,0	19	14	19	EL-DKOS-08-G 1/4"-wd-SC
800	10	G 3/8"	34,0	17,5	45,0	30,0	12,0	22	17	22	EL-DKOS-10-G 3/8"-wd-SC
630	12	G 3/8"	38,0	21,5	48,0	31,0	12,0	22	17	24	EL-DKOS-12-G 3/8"-wd-SC
630	14	G 1/2"	40,0	22,0	54,0	35,0	14,0	27	19	27	EL-DKOS-14-G 1/2"-wd-SC
630	16	G 1/2"	43,0	24,5	55,0	36,5	14,0	27	24	30	EL-DKOS-16-G 1/2"-wd-SC
420	20	G 3/4"	48,0	26,5	65,0	44,5	16,0	32	27	36	EL-DKOS-20-G 3/4"-wd-SC
420	25	G 1"	54,0	30,0	73,0	50,0	18,0	41	36	46	EL-DKOS-25-G 1"-wd-SC
420	30	G 1 1/4"	62,0	35,5	78,5	55,0	20,0	50	41	50	EL-DKOS-30-G 1 1/4"-wd-SC
420	38	G 1 1/2"	72,0	41,0	89,0	63,0	22,0	55	50	60	EL-DKOS-38-G 1 1/2"-wd-SC

Einstellbare L-Verschraubungen mit Dichtkegel und O-Ring FPM
Rohrseitig Schneidringanschluss
Einschraubgewinde:
Whitworth-Rohrgewinde - Zylindrisch
wd = Abdichtung durch Profildichtung - FPM

With Taper and O-Ring - FPM
Cutting Ring Connection at the Tube Connection side
Thread: BSP - Parallel
wd = Sealing by an Elastomer Profiled Ring - FPM



Reihe / Series L

Druck Pressure	Rohr A.D. Tube O.D.	Gewinde Thread	Ca. Maße Approx. Dimensions								Bestellzeichen Order-Code
			L2	L3	L5	L9	i	SW1	SW2	SW3	
PN	D1	G	L2	L3	L5	L9	i	SW1	SW2	SW3	
500	6	G 1/8"	12,0	34,5	26,0	19,0	8,0	14	12	14	EL-DKOL-06-G 1/8"-wd-OMD
500	8	G 1/4"	14,0	37,5	27,5	21,0	12,0	19	12	17	EL-DKOL-08-G 1/4"-wd-OMD
500	10	G 1/4"	15,0	40,0	29,0	22,0	12,0	19	14	19	EL-DKOL-10-G 1/4"-wd-OMD
400	12	G 3/8"	17,0	42,0	29,5	24,0	12,0	22	17	22	EL-DKOL-12-G 3/8"-wd-OMD
400	15	G 1/2"	21,0	46,5	32,5	28,0	14,0	27	19	27	EL-DKOL-15-G 1/2"-wd-OMD
400	18	G 1/2"	23,5	50,0	35,5	31,0	14,0	27	24	32	EL-DKOL-18-G 1/2"-wd-OMD
250	22	G 3/4"	27,5	55,0	38,5	35,0	16,0	32	27	36	EL-DKOL-22-G 3/4"-wd-OMD
250	28	G 1"	30,5	59,0	41,5	38,0	18,0	41	36	41	EL-DKOL-28-G 1"-wd-OMD
250	35	G 1 1/4"	34,5	68,5	51,0	45,0	20,0	50	41	50	EL-DKOL-35-G 1 1/4"-wd-OMD
250	42	G 1 1/2"	40,0	75,0	56,0	51,0	22,0	55	50	60	EL-DKOL-42-G 1 1/2"-wd-OMD

Reihe / Series S

Druck Pressure	Rohr A.D. Tube O.D.	Gewinde Thread	Ca. Maße Approx. Dimensions								Bestellzeichen Order-Code
			L2	L3	L5	L9	i	SW1	SW2	SW3	
PN	D1	G	L2	L3	L5	L9	i	SW1	SW2	SW3	
800	6	G 1/4"	16,0	40,0	27,0	23,0	12,0	19	12	17	EL-DKOS-06-G 1/4"-wd-OMD
800	8	G 1/4"	17,0	42,5	27,5	24,0	12,0	19	14	19	EL-DKOS-08-G 1/4"-wd-OMD
800	10	G 3/8"	17,5	45,0	30,0	25,0	12,0	22	17	22	EL-DKOS-10-G 3/8"-wd-OMD
630	12	G 3/8"	21,5	48,0	31,0	29,0	12,0	22	17	24	EL-DKOS-12-G 3/8"-wd-OMD
630	14	G 1/2"	22,0	54,0	35,0	30,0	14,0	27	19	27	EL-DKOS-14-G 1/2"-wd-OMD
630	16	G 1/2"	24,5	55,0	36,5	33,0	14,0	27	24	30	EL-DKOS-16-G 1/2"-wd-OMD
420	20	G 3/4"	26,5	65,0	44,5	37,0	16,0	32	27	36	EL-DKOS-20-G 3/4"-wd-OMD
420	25	G 1"	30,0	73,0	50,0	42,0	18,0	41	36	46	EL-DKOS-25-G 1"-wd-OMD
420	30	G 1 1/4"	35,5	78,5	55,0	49,0	20,0	50	41	50	EL-DKOS-30-G 1 1/4"-wd-OMD
420	38	G 1 1/2"	41,0	89,0	63,0	57,0	22,0	55	50	60	EL-DKOS-38-G 1 1/2"-wd-OMD

EL - EINSTELLBARE - L- VERSCHRAUBUNGEN

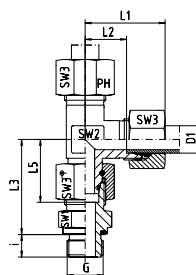
EL - ADJUSTABLE - RUN - TEES



EDELSTAHL / STAINLESS STEEL
VERBINDUNGSTECHNIK
FLUID CONNECTORS

Einstellbare L-Verschraubungen mit Dichtkegel
und O-Ring FPM
Rohrseitig Schneidringanschluss
Einschraubgewinde:
Metrisches Feingewinde - Zylindrisch
wd = Abdichtung durch Profildichtung - FPM

With Taper and O-Ring - FPM
Cutting Ring Connection at the Tube Connection side
Thread: Metric - Parallel
wd = Sealing by an Elastomer Profiled Ring - FPM



Reihe / Series L

Druck Pressure	Rohr A.D. Tube O.D.	Gewinde Thread	Ca. Maße Approx. Dimensions								Bestellzeichen Order-Code
PN	D1	G	L1	L2	L3	L5	i	SW1	SW2	SW3	
500	6	M 10 x 1	27,0	12,0	34,5	26,0	8,0	14	12	14	EL-DKOL-06-M 10x1-wd
500	8	M 12 x 1,5	29,0	14,0	37,5	27,5	12,0	17	12	17	EL-DKOL-08-M 12x1,5-wd
500	10	M 14 x 1,5	30,0	15,0	40,0	29,0	12,0	19	14	19	EL-DKOL-10-M 14x1,5-wd
400	12	M 16 x 1,5	32,0	17,0	42,0	29,5	12,0	22	17	22	EL-DKOL-12-M 16x1,5-wd
400	15	M 18 x 1,5	36,0	21,0	46,0	32,5	12,0	24	19	27	EL-DKOL-15-M 18x1,5-wd
400	18	M 22 x 1,5	40,0	23,5	50,0	35,5	14,0	27	24	32	EL-DKOL-18-M 22x1,5-wd
250	22	M 26 x 1,5	44,0	27,5	55,0	38,5	16,0	32	27	36	EL-DKOL-22-M 26x1,5-wd
250	28	M 33 x 2	47,0	30,5	59,0	41,5	18,0	41	36	41	EL-DKOL-28-M 33x3-wd
250	35	M 42 x 2	56,0	34,5	68,5	51,0	20,0	50	41	50	EL-DKOL-35-M 42x2-wd
250	42	M 48 x 2	63,0	40,0	75,0	56,0	22,0	55	50	60	EL-DKOL-42-M 48x2-wd

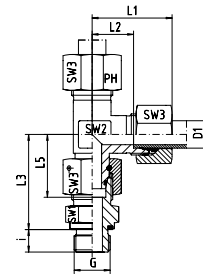
Reihe / Series S

Druck Pressure	Rohr A.D. Tube O.D.	Gewinde Thread	Ca. Maße Approx. Dimensions								Bestellzeichen Order-Code
PN	D1	G	L1	L2	L3	L5	i	SW1	SW2	SW3	
800	6	M 12 x 1,5	31,0	16,0	40,0	27,0	12,0	17	12	17	EL-DKOS-06-M 12x1,5-wd
800	8	M 14 x 1,5	32,0	17,0	42,5	27,5	12,0	19	14	19	EL-DKOS-08-M 14x1,5-wd
800	10	M 16 x 1,5	34,0	17,5	45,0	30,0	12,0	22	17	22	EL-DKOS-10-M 16x1,5-wd
630	12	M 18 x 1,5	38,0	21,5	48,0	31,0	12,0	24	17	24	EL-DKOS-12-M 18x1,5-wd
630	14	M 20 x 1,5	40,0	22,0	54,0	35,0	14,0	27	19	27	EL-DKOS-14-M 20x1,5-wd
630	16	M 22 x 1,5	43,0	24,5	55,0	36,5	14,0	27	24	30	EL-DKOS-16-M 22x1,5-wd
420	20	M 27 x 2	48,0	26,5	65,0	44,5	16,0	32	27	36	EL-DKOS-20-M 27x2-wd
420	25	M 33 x 2	54,0	30,0	73,0	50,0	18,0	41	36	46	EL-DKOS-25-M 33x2-wd
420	30	M 42 x 2	62,0	35,5	78,5	55,0	20,0	50	41	50	EL-DKOS-30-M 42x2-wd
420	38	M 48 x 2	72,0	41,0	89,0	63,0	22,0	55	50	60	EL-DKOS-38-M 48x2-wd



Einstellbare L-Verschraubungen mit Dichtkegel
und O-Ring FPM
Rohrseitig Schneidringanschluss
Einschraubgewinde:
Metrisches Feingewinde - Zylindrisch
wd = Abdichtung durch Profildichtung - FPM

With Taper and O-Ring - FPM
Cutting Ring Connection at the Tube Connection side
Thread: Metric - Parallel
wd = Sealing by an Elastomer Profiled Ring - FPM



Reihe / Series L

Druck Pressure	Rohr A.D. Tube O.D.	Gewinde Thread	Ca. Maße Approx. Dimensions								Bestellzeichen Order-Code
PN	D1	G	L1	L2	L3	L5	i	SW1	SW2	SW3	
500	6	M 10 x 1	27,0	12,0	34,5	26,0	8,0	14	12	14	EL-DKOL-06-M 10x1-wd-SC
500	8	M 12 x 1,5	29,0	14,0	37,5	27,5	12,0	17	12	17	EL-DKOL-08-M 12x1,5-wd-SC
500	10	M 14 x 1,5	30,0	15,0	40,0	29,0	12,0	19	14	19	EL-DKOL-10-M 14x1,5-wd-SC
400	12	M 16 x 1,5	32,0	17,0	42,0	29,5	12,0	22	17	22	EL-DKOL-12-M 16x1,5-wd-SC
400	15	M 18 x 1,5	36,0	21,0	46,0	32,5	12,0	24	19	27	EL-DKOL-15-M 18x1,5-wd-SC
400	18	M 22 x 1,5	40,0	23,5	50,0	35,5	14,0	27	24	32	EL-DKOL-18-M 22x1,5-wd-SC
250	22	M 26 x 1,5	44,0	27,5	55,0	38,5	16,0	32	27	36	EL-DKOL-22-M 26x1,5-wd-SC
250	28	M 33 x 2	47,0	30,5	59,0	41,5	18,0	41	36	41	EL-DKOL-28-M 33x3-wd-SC
250	35	M 42 x 2	56,0	34,5	68,5	51,0	20,0	50	41	50	EL-DKOL-35-M 42x2-wd-SC
250	42	M 48 x 2	63,0	40,0	75,0	56,0	22,0	55	50	60	EL-DKOL-42-M 48x2-wd-SC

Reihe / Series S

Druck Pressure	Rohr A.D. Tube O.D.	Gewinde Thread	Ca. Maße Approx. Dimensions								Bestellzeichen Order-Code
PN	D1	G	L1	L2	L3	L5	i	SW1	SW2	SW3	
800	6	M 12 x 1,5	31,0	16,0	40,0	27,0	12,0	17	12	17	EL-DKOS-06-M 12x1,5-wd-SC
800	8	M 14 x 1,5	32,0	17,0	42,5	27,5	12,0	19	14	19	EL-DKOS-08-M 14x1,5-wd-SC
800	10	M 16 x 1,5	34,0	17,5	45,0	30,0	12,0	22	17	22	EL-DKOS-10-M 16x1,5-wd-SC
630	12	M 18 x 1,5	38,0	21,5	48,0	31,0	12,0	24	17	24	EL-DKOS-12-M 18x1,5-wd-SC
630	14	M 20 x 1,5	40,0	22,0	54,0	35,0	14,0	27	19	27	EL-DKOS-14-M 20x1,5-wd-SC
630	16	M 22 x 1,5	43,0	24,5	55,0	36,5	14,0	27	24	30	EL-DKOS-16-M 22x1,5-wd-SC
420	20	M 27 x 2	48,0	26,5	65,0	44,5	16,0	32	27	36	EL-DKOS-20-M 27x2-wd-SC
420	25	M 33 x 2	54,0	30,0	73,0	50,0	18,0	41	36	46	EL-DKOS-25-M 33x2-wd-SC
420	30	M 42 x 2	62,0	35,5	78,5	55,0	20,0	50	41	50	EL-DKOS-30-M 42x2-wd-SC
420	38	M 48 x 2	72,0	41,0	89,0	63,0	22,0	55	50	60	EL-DKOS-38-M 48x2-wd-SC

EL - EINSTELLBARE - L- VERSCHRAUBUNGEN

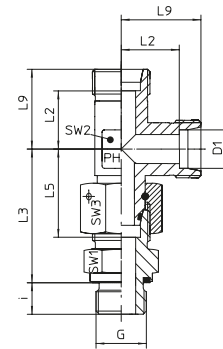
EL - ADJUSTABLE - RUN - TEES



EDELSTAHL / STAINLESS STEEL
VERBINDUNGSTECHNIK
FLUID CONNECTORS

Einstellbare L-Verschraubungen mit Dichtkegel und O-Ring FPM
Rohrseitig Schneidringanschluss
Einschraubgewinde:
Metrisches Feingewinde - Zylindrisch
wd = Abdichtung durch Profildichtung - FPM

With Taper and O-Ring - FPM
Cutting Ring Connection at the Tube Connection side
Thread: Metric - Parallel
wd = Sealing by an Elastomer Profiled Ring - FPM



Reihe / Series L

Druck Pressure	Rohr A.D. Tube O.D.	Gewinde Thread	Ca. Maße Approx. Dimensions								Bestellzeichen Order-Code
			L2	L3	L5	L9	i	SW1	SW2	SW3	
PN	D1	G	L2	L3	L5	L9	i	SW1	SW2	SW3	
500	6	M 10 x 1	12,0	34,5	26,0	19,0	8,0	14	12	14	EL-DKOL-06-M 10x1-wd-OMD
500	8	M 12 x 1,5	14,0	37,5	27,5	21,0	12,0	17	12	17	EL-DKOL-08-M 12x1,5-wd-OMD
500	10	M 14 x 1,5	15,0	40,0	29,0	22,0	12,0	19	14	19	EL-DKOL-10-M 14x1,5-wd-OMD
400	12	M 16 x 1,5	17,0	42,0	29,5	24,0	12,0	22	17	22	EL-DKOL-12-M 16x1,5-wd-OMD
400	15	M 18 x 1,5	21,0	46,0	32,5	28,0	12,0	24	19	27	EL-DKOL-15-M 18x1,5-wd-OMD
400	18	M 22 x 1,5	23,5	50,0	35,5	31,0	14,0	27	24	32	EL-DKOL-18-M 22x1,5-wd-OMD
250	22	M 26 x 1,5	27,5	55,0	38,5	35,0	16,0	32	27	36	EL-DKOL-22-M 26x1,5-wd-OMD
250	28	M 33 x 2	30,5	59,0	41,5	38,0	18,0	41	36	41	EL-DKOL-28-M 33x2-wd-OMD
250	35	M 42 x 2	34,5	68,5	51,0	45,0	20,0	50	41	50	EL-DKOL-35-M 42x2-wd-OMD
250	42	M 48 x 2	40,0	75,0	56,0	51,0	22,0	55	50	60	EL-DKOL-42-M 48x2-wd-OMD

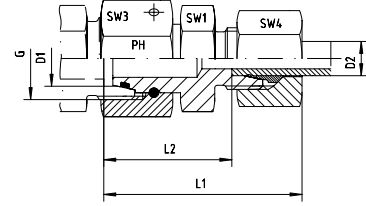
Reihe / Series S

Druck Pressure	Rohr A.D. Tube O.D.	Gewinde Thread	Ca. Maße Approx. Dimensions								Bestellzeichen Order-Code
			L2	L3	L5	L9	i	SW1	SW2	SW3	
PN	D1	G	L2	L3	L5	L9	i	SW1	SW2	SW3	
800	6	M 12 x 1,5	16,0	40,0	27,0	23,0	12,0	17	12	17	EL-DKOS-06-M 12x1,5-wd-OMD
800	8	M 14 x 1,5	17,0	42,5	27,5	24,0	12,0	19	14	19	EL-DKOS-08-M 14x1,5-wd-OMD
800	10	M 16 x 1,5	17,5	45,0	30,0	25,0	12,0	22	17	22	EL-DKOS-10-M 16x1,5-wd-OMD
630	12	M 18 x 1,5	21,5	48,0	31,0	29,0	12,0	24	17	24	EL-DKOS-12-M 18x1,5-wd-OMD
630	14	M 20 x 1,5	22,0	54,0	35,0	30,0	14,0	27	19	27	EL-DKOS-14-M 20x1,5-wd-OMD
630	16	M 22 x 1,5	24,5	55,0	36,5	33,0	14,0	27	24	30	EL-DKOS-16-M 22x1,5-wd-OMD
420	20	M 27 x 2	26,5	65,0	44,5	37,0	16,0	32	27	36	EL-DKOS-20-M 27x2-wd-OMD
420	25	M 33 x 2	30,0	73,0	50,0	42,0	18,0	41	36	46	EL-DKOS-25-M 33x2-wd-OMD
420	30	M 42 x 2	35,5	78,5	55,0	49,0	20,0	50	41	50	EL-DKOS-30-M 42x2-wd-OMD
420	38	M 48 x 2	41,0	89,0	63,0	57,0	22,0	55	50	60	EL-DKOS-38-M 48x2-wd-OMD



Mit Dichtkegel und O-Ring (DKO) - FPM
Passend in Bohrungsform W DIN 3861
Andere Abmessungen auf Anfrage!

With Taper and O-ring - FPM
For Type of Port End W DIN 3861
Other dimensions on request!



Reihe / Series L

Druck Pressure	Rohr A.D. Tube O.D.		Gewinde Thread	Ca. Maße Approx. Dimensions			Bemerkungen Notes			Bestellzeichen Order-Code
PN	D1	D2	G	L1	L2	SW1	SW3	SW4		
500	8	6	M 14 x 1,5	38,0	23,5	12	17	14		RED-DKOL-08/06
500	10	6	M 16 x 1,5	40,0	25,0	14	19	14		RED-DKOL-10/06
500	10	8	M 16 x 1,5	40,0	25,0	14	19	17		RED-DKOL-10/08
400	12	6	M 18 x 1,5	40,0	25,0	17	22	14		RED-DKOL-12/06
400	12	8	M 18 x 1,5	40,0	25,0	17	22	17		RED-DKOL-12/08
400	12	10	M 18 x 1,5	41,0	26,0	17	22	19		RED-DKOL-12/10
400	15	6	M 22 x 1,5	43,0	28,5	19	27	14		RED-DKOL-15/06
400	15	8	M 22 x 1,5	43,0	28,5	19	27	17		RED-DKOL-15/08
400	15	10	M 22 x 1,5	44,0	29,5	19	27	19		RED-DKOL-15/10
400	15	12	M 22 x 1,5	44,0	29,5	19	27	22		RED-DKOL-15/12
400	18	6	M 26 x 1,5	43,0	28,0	24	32	14		RED-DKOL-18/06
400	18	8	M 26 x 1,5	43,0	28,0	24	32	17		RED-DKOL-18/08
400	18	10	M 26 x 1,5	44,0	29,0	24	32	19		RED-DKOL-18/10
400	18	12	M 26 x 1,5	44,0	29,0	24	32	22		RED-DKOL-18/12
400	18	15	M 26 x 1,5	45,0	30,0	24	32	27		RED-DKOL-18/15
250	22	6	M 30 x 2	47,0	32,0	27	36	14		RED-DKOL-22/06
250	22	8	M 30 x 2	47,0	32,0	27	36	17		RED-DKOL-22/08
250	22	10	M 30 x 2	48,0	33,0	27	36	19		RED-DKOL-22/10
250	22	12	M 30 x 2	48,0	33,0	27	36	22		RED-DKOL-22/12
250	22	15	M 30 x 2	49,0	34,0	27	36	27		RED-DKOL-22/15
250	22	18	M 30 x 2	50,0	33,5	27	36	32		RED-DKOL-22/18
250	28	6	M 36 x 2	49,0	34,0	32	41	14		RED-DKOL-28/06
250	28	8	M 36 x 2	49,0	34,0	32	41	17		RED-DKOL-28/08
250	28	10	M 36 x 2	50,0	35,0	32	41	19		RED-DKOL-28/10
250	28	12	M 36 x 2	50,0	35,0	32	41	22		RED-DKOL-28/12
250	28	15	M 36 x 2	51,0	36,0	32	41	27		RED-DKOL-28/15
250	28	18	M 36 x 2	52,0	35,5	32	41	32		RED-DKOL-28/18
250	28	22	M 36 x 2	54,0	37,5	32	41	36		RED-DKOL-28/22
250	35	6	M 45 x 2	52,0	37,0	41	50	14		RED-DKOL-35/06
250	35	8	M 45 x 2	52,0	37,0	41	50	17		RED-DKOL-35/08
250	35	10	M 45 x 2	53,0	38,0	41	50	19		RED-DKOL-35/10
250	35	12	M 45 x 2	53,0	38,0	41	50	22		RED-DKOL-35/12
250	35	15	M 45 x 2	54,0	39,0	41	50	27		RED-DKOL-35/15
250	35	18	M 45 x 2	55,0	38,5	41	50	32		RED-DKOL-35/18
250	35	22	M 45 x 2	57,0	40,5	41	50	36		RED-DKOL-35/22
250	35	28	M 45 x 2	57,0	40,5	41	50	41		RED-DKOL-35/28
250	42	6	M 52 x 2	55,0	40,5	50	60	14		RED-DKOL-42/06
250	42	8	M 52 x 2	55,0	40,5	50	60	17		RED-DKOL-42/08
250	42	10	M 52 x 2	56,0	41,5	50	60	19		RED-DKOL-42/10
250	42	12	M 52 x 2	56,0	41,5	50	60	22		RED-DKOL-42/12
250	42	15	M 52 x 2	58,0	42,5	50	60	27		RED-DKOL-42/15
250	42	18	M 52 x 2	58,0	42,0	50	60	32		RED-DKOL-42/18
250	42	22	M 52 x 2	60,0	44,0	50	60	36		RED-DKOL-42/22
250	42	28	M 52 x 2	61,0	44,0	50	60	41		RED-DKOL-42/28
250	42	35	M 52 x 2	65,0	43,0	50	60	50		RED-DKOL-42/35

RED - REDUZIER - VERSCHRAUBUNGEN

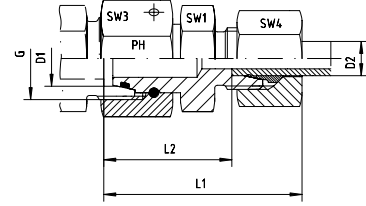
RED - REDUCING - COUPLINGS



EDELSTAHL / STAINLESS STEEL
VERBINDUNGSTECHNIK
FLUID CONNECTORS

Mit Dichtkegel und O-Ring (DKO) - FPM
Passend in Bohrungsform W DIN 3861
Andere Abmessungen auf Anfrage!

With Taper and O-ring - FPM
For Type of Port End W DIN 3861
Other dimensions on request!



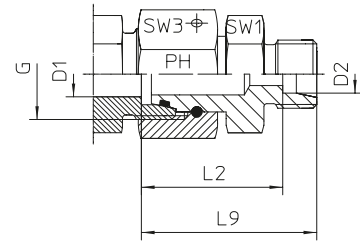
Reihe / Series L

Druck Pressure	Rohr A.D. Tube O.D.		Gewinde Thread	Ca. Maße Approx. Dimensions			Bemerkungen Notes			Bestellzeichen Order-Code
PN	D1	D2	G	L1	L2	SW1	SW3	SW4		
500	8	6	M 14 x 1,5	38,0	23,5	12	17	14		RED-DKOL-08/06-SC
500	10	6	M 16 x 1,5	40,0	25,0	14	19	14		RED-DKOL-10/06-SC
500	10	8	M 16 x 1,5	40,0	25,0	14	19	17		RED-DKOL-10/08-SC
400	12	6	M 18 x 1,5	40,0	25,0	17	22	14		RED-DKOL-12/06-SC
400	12	8	M 18 x 1,5	40,0	25,0	17	22	17		RED-DKOL-12/08-SC
400	12	10	M 18 x 1,5	41,0	26,0	17	22	19		RED-DKOL-12/10-SC
400	15	6	M 22 x 1,5	43,0	28,5	19	27	14		RED-DKOL-15/06-SC
400	15	8	M 22 x 1,5	43,0	28,5	19	27	17		RED-DKOL-15/08-SC
400	15	10	M 22 x 1,5	44,0	29,5	19	27	19		RED-DKOL-15/10-SC
400	15	12	M 22 x 1,5	44,0	29,5	19	27	22		RED-DKOL-15/12-SC
400	18	6	M 26 x 1,5	43,0	28,0	24	32	14		RED-DKOL-18/06-SC
400	18	8	M 26 x 1,5	43,0	28,0	24	32	17		RED-DKOL-18/08-SC
400	18	10	M 26 x 1,5	44,0	29,0	24	32	19		RED-DKOL-18/10-SC
400	18	12	M 26 x 1,5	44,0	29,0	24	32	22		RED-DKOL-18/12-SC
400	18	15	M 26 x 1,5	45,0	30,0	24	32	27		RED-DKOL-18/15-SC
250	22	6	M 30 x 2	47,0	32,0	27	36	14		RED-DKOL-22/06-SC
250	22	8	M 30 x 2	47,0	32,0	27	36	17		RED-DKOL-22/08-SC
250	22	10	M 30 x 2	48,0	33,0	27	36	19		RED-DKOL-22/10-SC
250	22	12	M 30 x 2	48,0	33,0	27	36	22		RED-DKOL-22/12-SC
250	22	15	M 30 x 2	49,0	34,0	27	36	27		RED-DKOL-22/15-SC
250	22	18	M 30 x 2	50,0	33,5	27	36	32		RED-DKOL-22/18-SC
250	28	6	M 36 x 2	49,0	34,0	32	41	14		RED-DKOL-28/06-SC
250	28	8	M 36 x 2	49,0	34,0	32	41	17		RED-DKOL-28/08-SC
250	28	10	M 36 x 2	50,0	35,0	32	41	19		RED-DKOL-28/10-SC
250	28	12	M 36 x 2	50,0	35,0	32	41	22		RED-DKOL-28/12-SC
250	28	15	M 36 x 2	51,0	36,0	32	41	27		RED-DKOL-28/15-SC
250	28	18	M 36 x 2	52,0	35,5	32	41	32		RED-DKOL-28/18-SC
250	28	22	M 36 x 2	54,0	37,5	32	41	36		RED-DKOL-28/22-SC
250	35	6	M 45 x 2	52,0	37,0	41	50	14		RED-DKOL-35/06-SC
250	35	8	M 45 x 2	52,0	37,0	41	50	17		RED-DKOL-35/08-SC
250	35	10	M 45 x 2	53,0	38,0	41	50	19		RED-DKOL-35/10-SC
250	35	12	M 45 x 2	53,0	38,0	41	50	22		RED-DKOL-35/12-SC
250	35	15	M 45 x 2	54,0	39,0	41	50	27		RED-DKOL-35/15-SC
250	35	18	M 45 x 2	55,0	38,5	41	50	32		RED-DKOL-35/18-SC
250	35	22	M 45 x 2	57,0	40,5	41	50	36		RED-DKOL-35/22-SC
250	35	28	M 45 x 2	57,0	40,5	41	50	41		RED-DKOL-35/28-SC
250	42	6	M 52 x 2	55,0	40,5	50	60	14		RED-DKOL-42/06-SC
250	42	8	M 52 x 2	55,0	40,5	50	60	17		RED-DKOL-42/08-SC
250	42	10	M 52 x 2	56,0	41,5	50	60	19		RED-DKOL-42/10-SC
250	42	12	M 52 x 2	56,0	41,5	50	60	22		RED-DKOL-42/12-SC
250	42	15	M 52 x 2	58,0	42,5	50	60	27		RED-DKOL-42/15-SC
250	42	18	M 52 x 2	58,0	42,0	50	60	32		RED-DKOL-42/18-SC
250	42	22	M 52 x 2	60,0	44,0	50	60	36		RED-DKOL-42/22-SC
250	42	28	M 52 x 2	61,0	44,0	50	60	41		RED-DKOL-42/28-SC
250	42	35	M 52 x 2	65,0	43,0	50	60	50		RED-DKOL-42/35-SC



Mit Dichtkegel und O-Ring (DKO) - FPM
Passend in Bohrungsform W DIN 3861
Andere Abmessungen auf Anfrage!

With Taper and O-ring - FPM
For Type of Port End W DIN 3861
Other dimensions on request!



Reihe / Series L

Druck Pressure	Rohr A.D. Tube O.D.		Gewinde Thread	Ca. Maße Approx. Dimensions				Bemerkungen Notes	Bestellzeichen Order-Code
PN	D1	D2	G	L2	L9	SW1	SW3		
500	8	6	M 14 x 1,5	23,5	30,5	12,0	17,0		RED-DKOL-08/06-OMD
500	10	6	M 16 x 1,5	25,0	32,0	14,0	19,0		RED-DKOL-10/06-OMD
500	10	8	M 16 x 1,5	25,0	32,0	14,0	19,0		RED-DKOL-10/08-OMD
400	12	6	M 18 x 1,5	25,0	32,0	17,0	22,0		RED-DKOL-12/06-OMD
400	12	8	M 18 x 1,5	25,0	32,0	17,0	22,0		RED-DKOL-12/08-OMD
400	12	10	M 18 x 1,5	26,0	33,0	17,0	22,0		RED-DKOL-12/10-OMD
400	15	6	M 22 x 1,5	28,5	35,5	19,0	27,0		RED-DKOL-15/06-OMD
400	15	8	M 22 x 1,5	28,5	35,5	19,0	27,0		RED-DKOL-15/08-OMD
400	15	10	M 22 x 1,5	29,5	36,5	19,0	27,0		RED-DKOL-15/10-OMD
400	15	12	M 22 x 1,5	29,5	36,5	19,0	27,0		RED-DKOL-15/12-OMD
400	18	6	M 26 x 1,5	28,0	35,0	24,0	32,0		RED-DKOL-18/06-OMD
400	18	8	M 26 x 1,5	28,0	35,0	24,0	32,0		RED-DKOL-18/08-OMD
400	18	10	M 26 x 1,5	29,0	35,0	24,0	32,0		RED-DKOL-18/10-OMD
400	18	12	M 26 x 1,5	29,0	35,0	24,0	32,0		RED-DKOL-18/12-OMD
400	18	15	M 26 x 1,5	30,0	37,0	24,0	32,0		RED-DKOL-18/15-OMD
250	22	6	M 30 x 2	32,0	39,0	27,0	36,0		RED-DKOL-22/06-OMD
250	22	8	M 30 x 2	32,0	39,0	27,0	36,0		RED-DKOL-22/08-OMD
250	22	10	M 30 x 2	33,0	40,0	27,0	36,0		RED-DKOL-22/10-OMD
250	22	12	M 30 x 2	33,0	40,0	27,0	36,0		RED-DKOL-22/12-OMD
250	22	15	M 30 x 2	34,0	41,0	27,0	36,0		RED-DKOL-22/15-OMD
250	22	18	M 30 x 2	33,5	41,0	27,0	36,0		RED-DKOL-22/18-OMD
250	28	6	M 36 x 2	34,0	41,0	32,0	41,0		RED-DKOL-28/06-OMD
250	28	8	M 36 x 2	34,0	41,0	32,0	41,0		RED-DKOL-28/08-OMD
250	28	10	M 36 x 2	35,0	42,0	32,0	41,0		RED-DKOL-28/10-OMD
250	28	12	M 36 x 2	35,0	42,0	32,0	41,0		RED-DKOL-28/12-OMD
250	28	15	M 36 x 2	36,0	43,0	32,0	41,0		RED-DKOL-28/15-OMD
250	28	18	M 36 x 2	35,5	43,0	32,0	41,0		RED-DKOL-28/18-OMD
250	28	22	M 36 x 2	37,5	45,0	32,0	41,0		RED-DKOL-28/22-OMD
250	35	6	M 45 x 2	37,0	44,0	41,0	50,0		RED-DKOL-35/06-OMD
250	35	8	M 45 x 2	37,0	44,0	41,0	50,0		RED-DKOL-35/08-OMD
250	35	10	M 45 x 2	38,0	45,0	41,0	50,0		RED-DKOL-35/10-OMD
250	35	12	M 45 x 2	38,0	45,0	41,0	50,0		RED-DKOL-35/12-OMD
250	35	15	M 45 x 2	39,0	46,0	41,0	50,0		RED-DKOL-35/15-OMD
250	35	18	M 45 x 2	38,5	46,0	41,0	50,0		RED-DKOL-35/18-OMD
250	35	22	M 45 x 2	40,5	48,0	41,0	50,0		RED-DKOL-35/22-OMD
250	35	28	M 45 x 2	40,5	48,0	41,0	50,0		RED-DKOL-35/28-OMD
250	42	6	M 52 x 2	40,5	47,5	50,0	60,0		RED-DKOL-42/06-OMD
250	42	8	M 52 x 2	40,5	47,5	50,0	60,0		RED-DKOL-42/08-OMD
250	42	10	M 52 x 2	41,5	48,5	50,0	60,0		RED-DKOL-42/10-OMD
250	42	12	M 52 x 2	41,5	48,5	50,0	60,0		RED-DKOL-42/12-OMD
250	42	15	M 52 x 2	42,5	49,5	50,0	60,0		RED-DKOL-42/15-OMD
250	42	18	M 52 x 2	42,0	49,5	50,0	60,0		RED-DKOL-42/18-OMD
250	42	22	M 52 x 2	44,0	51,5	50,0	60,0		RED-DKOL-42/22-OMD
250	42	28	M 52 x 2	44,0	51,5	50,0	60,0		RED-DKOL-42/28-OMD
250	42	35	M 52 x 2	43,0	53,5	50,0	60,0		RED-DKOL-42/35-OMD

RED - REDUZIER - VERSCHRAUBUNGEN

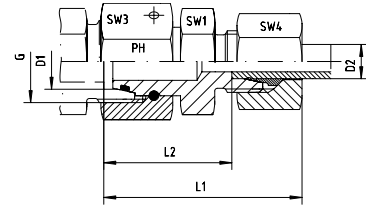
RED - REDUCING - COUPLINGS



EDELSTAHL / STAINLESS STEEL
VERBINDUNGSTECHNIK
FLUID CONNECTORS

Mit Dichtkegel und O-Ring (DKO) - FPM
Passend in Bohrungsform W DIN 3861
Andere Abmessungen auf Anfrage!

With Taper and O-ring - FPM
For Type of Port End W DIN 3861
Other dimensions on request!



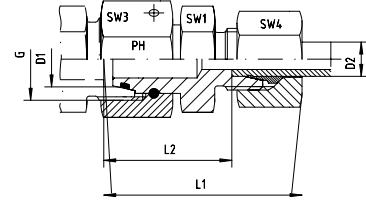
Reihe / Series S

Druck Pressure	Rohr A.D. Tube O.D.		Gewinde Thread	Ca. Maße Approx. Dimensions			Bemerkungen Notes			Bestellzeichen Order-Code
PN	D1	D2	G	L1	L2	SW1	SW3	SW4		
800	8	6	M 16 x 1,5	42,0	27,0	14	19	17		RED-DKOS-08/06
800	10	6	M 18 x 1,5	42,0	27,5	17	22	17		RED-DKOS-10/06
800	10	8	M 18 x 1,5	42,0	27,5	17	22	19		RED-DKOS-10/08
630	12	6	M 20 x 1,5	44,0	29,0	17	24	17		RED-DKOS-12/06
630	12	8	M 20 x 1,5	44,0	29,0	17	24	19		RED-DKOS-12/08
630	12	10	M 20 x 1,5	46,0	29,5	19	24	22		RED-DKOS-12/10
630	14	6	M 22 x 1,5	46,0	31,5	19	27	17		RED-DKOS-14/06
630	14	8	M 22 x 1,5	46,0	31,5	19	27	19		RED-DKOS-14/08
630	14	10	M 22 x 1,5	47,0	31,0	19	27	22		RED-DKOS-14/10
630	14	12	M 22 x 1,5	47,0	31,0	22	27	24		RED-DKOS-14/12
630	16	6	M 24 x 1,5	47,0	32,0	22	30	17		RED-DKOS-16/06
630	16	8	M 24 x 1,5	47,0	32,0	22	30	19		RED-DKOS-16/08
630	16	10	M 24 x 1,5	48,0	31,5	22	30	22		RED-DKOS-16/10
630	16	12	M 24 x 1,5	48,0	31,5	22	30	24		RED-DKOS-16/12
630	16	14	M 24 x 1,5	51,0	33,0	22	30	27		RED-DKOS-16/14
420	20	6	M 30 x 2	51,0	36,0	27	36	17		RED-DKOS-20/06
420	20	8	M 30 x 2	51,0	36,0	27	36	19		RED-DKOS-20/08
420	20	10	M 30 x 2	52,0	35,5	27	36	22		RED-DKOS-20/10
420	20	12	M 30 x 2	52,0	35,5	27	36	24		RED-DKOS-20/12
420	20	14	M 30 x 2	55,0	37,0	27	36	27		RED-DKOS-20/14
420	20	16	M 30 x 2	55,0	36,5	27	36	30		RED-DKOS-20/16
420	25	6	M 36 x 2	53,0	38,5	32	41	17		RED-DKOS-25/06
420	25	8	M 36 x 2	53,0	38,5	32	41	19		RED-DKOS-25/08
420	25	10	M 36 x 2	54,0	38,0	32	41	22		RED-DKOS-25/10
420	25	12	M 36 x 2	54,0	38,0	32	41	24		RED-DKOS-25/12
420	25	14	M 36 x 2	57,0	39,5	32	41	27		RED-DKOS-25/14
420	25	16	M 36 x 2	57,0	39,0	32	41	30		RED-DKOS-25/16
420	25	20	M 36 x 2	61,0	39,0	32	41	36		RED-DKOS-25/20
420	30	6	M 42 x 2	59,0	44,0	41	50	17		RED-DKOS-30/06
420	30	8	M 42 x 2	59,0	44,0	41	50	19		RED-DKOS-30/08
420	30	10	M 42 x 2	60,0	43,5	41	50	22		RED-DKOS-30/10
420	30	12	M 42 x 2	60,0	43,5	41	50	24		RED-DKOS-30/12
420	30	14	M 42 x 2	63,0	45,0	41	50	27		RED-DKOS-30/14
420	30	16	M 42 x 2	63,0	44,5	41	50	30		RED-DKOS-30/16
420	30	20	M 42 x 2	66,0	44,5	41	50	36		RED-DKOS-30/20
420	30	25	M 42 x 2	69,0	45,0	41	50	46		RED-DKOS-30/25
420	38	6	M 52 x 2	63,0	47,0	50	60	17		RED-DKOS-38/06
420	38	8	M 52 x 2	63,0	47,0	50	60	19		RED-DKOS-38/08
420	38	10	M 52 x 2	63,0	47,0	50	60	22		RED-DKOS-38/10
420	38	12	M 52 x 2	63,0	47,0	50	60	24		RED-DKOS-38/12
420	38	14	M 52 x 2	66,0	48,5	50	60	27		RED-DKOS-38/14
420	38	16	M 52 x 2	66,0	48,0	50	60	30		RED-DKOS-38/16
420	38	20	M 52 x 2	70,0	48,0	50	60	36		RED-DKOS-38/20
420	38	25	M 52 x 2	73,0	48,5	50	60	46		RED-DKOS-38/25
420	38	30	M 52 x 2	76,0	49,0	50	60	50		RED-DKOS-38/30



Mit Dichtkegel und O-Ring (DKO) - FPM
Passend in Bohrungsform W DIN 3861
Andere Abmessungen auf Anfrage!

With Taper and O-ring - FPM
For Type of Port End W DIN 3861
Other dimensions on request!



Reihe / Series S

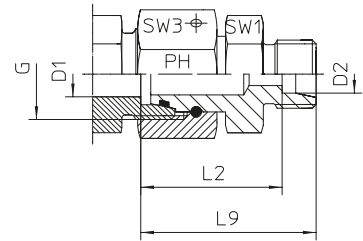
Druck Pressure	Rohr A.D. Tube O.D.		Gewinde Thread	Ca. Maße Approx. Dimensions			Bemerkungen Notes			Bestellzeichen Order-Code
PN	D1	D2	G	L1	L2	SW1	SW3	SW4		
800	8	6	M 16 x 1,5	42,0	27,0	14	19	17		RED-DKOS-08/06-SC
800	10	6	M 18 x 1,5	42,0	27,5	17	22	17		RED-DKOS-10/06-SC
800	10	8	M 18 x 1,5	42,0	27,5	17	22	19		RED-DKOS-10/08-SC
630	12	6	M 20 x 1,5	44,0	29,0	17	24	17		RED-DKOS-12/06-SC
630	12	8	M 20 x 1,5	44,0	29,0	17	24	19		RED-DKOS-12/08-SC
630	12	10	M 20 x 1,5	46,0	29,5	19	24	22		RED-DKOS-12/10-SC
630	14	6	M 22 x 1,5	46,0	31,5	19	27	17		RED-DKOS-14/06-SC
630	14	8	M 22 x 1,5	46,0	31,5	19	27	19		RED-DKOS-14/08-SC
630	14	10	M 22 x 1,5	47,0	31,0	19	27	22		RED-DKOS-14/10-SC
630	14	12	M 22 x 1,5	47,0	31,0	22	27	24		RED-DKOS-14/12-SC
630	16	6	M 24 x 1,5	47,0	32,0	22	30	17		RED-DKOS-16/06-SC
630	16	8	M 24 x 1,5	47,0	32,0	22	30	19		RED-DKOS-16/08-SC
630	16	10	M 24 x 1,5	48,0	31,5	22	30	22		RED-DKOS-16/10-SC
630	16	12	M 24 x 1,5	48,0	31,5	22	30	24		RED-DKOS-16/12-SC
630	16	14	M 24 x 1,5	51,0	33,0	22	30	27		RED-DKOS-16/14-SC
420	20	6	M 30 x 2	51,0	36,0	27	36	17		RED-DKOS-20/06-SC
420	20	8	M 30 x 2	51,0	36,0	27	36	19		RED-DKOS-20/08-SC
420	20	10	M 30 x 2	52,0	35,5	27	36	22		RED-DKOS-20/10-SC
420	20	12	M 30 x 2	52,0	35,5	27	36	24		RED-DKOS-20/12-SC
420	20	14	M 30 x 2	55,0	37,0	27	36	27		RED-DKOS-20/14-SC
420	20	16	M 30 x 2	55,0	36,5	27	36	30		RED-DKOS-20/16-SC
420	25	6	M 36 x 2	53,0	38,5	32	41	17		RED-DKOS-25/06-SC
420	25	8	M 36 x 2	53,0	38,5	32	41	19		RED-DKOS-25/08-SC
420	25	10	M 36 x 2	54,0	38,0	32	41	22		RED-DKOS-25/10-SC
420	25	12	M 36 x 2	54,0	38,0	32	41	24		RED-DKOS-25/12-SC
420	25	14	M 36 x 2	57,0	39,5	32	41	27		RED-DKOS-25/14-SC
420	25	16	M 36 x 2	57,0	39,0	32	41	30		RED-DKOS-25/16-SC
420	25	20	M 36 x 2	61,0	39,0	32	41	36		RED-DKOS-25/20-SC
420	30	6	M 42 x 2	59,0	44,0	41	50	17		RED-DKOS-30/06-SC
420	30	8	M 42 x 2	59,0	44,0	41	50	19		RED-DKOS-30/08-SC
420	30	10	M 42 x 2	60,0	43,5	41	50	22		RED-DKOS-30/10-SC
420	30	12	M 42 x 2	60,0	43,5	41	50	24		RED-DKOS-30/12-SC
420	30	14	M 42 x 2	63,0	45,0	41	50	27		RED-DKOS-30/14-SC
420	30	16	M 42 x 2	63,0	44,5	41	50	30		RED-DKOS-30/16-SC
420	30	20	M 42 x 2	66,0	44,5	41	50	36		RED-DKOS-30/20-SC
420	30	25	M 42 x 2	69,0	45,0	41	50	46		RED-DKOS-30/25-SC
420	38	6	M 52 x 2	63,0	47,0	50	60	17		RED-DKOS-38/06-SC
420	38	8	M 52 x 2	63,0	47,0	50	60	19		RED-DKOS-38/08-SC
420	38	10	M 52 x 2	63,0	47,0	50	60	22		RED-DKOS-38/10-SC
420	38	12	M 52 x 2	63,0	47,0	50	60	24		RED-DKOS-38/12-SC
420	38	14	M 52 x 2	66,0	48,5	50	60	27		RED-DKOS-38/14-SC
420	38	16	M 52 x 2	66,0	48,0	50	60	30		RED-DKOS-38/16-SC
420	38	20	M 52 x 2	70,0	48,0	50	60	36		RED-DKOS-38/20-SC
420	38	25	M 52 x 2	73,0	48,5	50	60	46		RED-DKOS-38/25-SC
420	38	30	M 52 x 2	76,0	49,0	50	60	50		RED-DKOS-38/30-SC

RED - REDUZIER - VERSCHRAUBUNGEN

RED - REDUCING - COUPLINGS

Mit Dichtkegel und O-Ring (DKO) - FPM
Passend in Bohrungsform W DIN 3861
Andere Abmessungen auf Anfrage!

With Taper and O-ring - FPM
For Type of Port End W DIN 3861
Other dimensions on request!



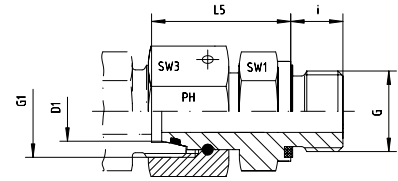
Reihe / Series S

Druck Pressure	Rohr A.D. Tube O.D.	Gewinde Thread	Ca. Maße Approx. Dimensions				Bemerkungen Notes	Bestellzeichen Order-Code
PN	D1	D2	G	L2	L9	SW1	SW2	
800	8	6	M 16 x 1,5	27,0	34,0	14,0	19,0	RED-DKOS-08/06-OMD
800	10	6	M 18 x 1,5	27,5	34,5	17,0	22,0	RED-DKOS-10/06-OMD
800	10	8	M 18 x 1,5	27,5	34,5	17,0	22,0	RED-DKOS-10/08-OMD
630	12	6	M 20 x 1,5	29,0	37,0	17,0	24,0	RED-DKOS-12/06-OMD
630	12	8	M 20 x 1,5	29,0	37,0	17,0	24,0	RED-DKOS-12/08-OMD
630	12	10	M 20 x 1,5	29,5	37,0	19,0	24,0	RED-DKOS-12/10-OMD
630	14	6	M 22 x 1,5	31,5	38,5	19,0	27,0	RED-DKOS-14/06-OMD
630	14	8	M 22 x 1,5	31,5	38,5	19,0	27,0	RED-DKOS-14/08-OMD
630	14	10	M 22 x 1,5	31,0	38,5	19,0	27,0	RED-DKOS-14/10-OMD
630	14	12	M 22 x 1,5	31,0	38,5	22,0	27,0	RED-DKOS-14/12-OMD
630	16	6	M 24 x 1,5	32,0	39,0	22,0	30,0	RED-DKOS-16/06-OMD
630	16	8	M 24 x 1,5	32,0	39,0	22,0	30,0	RED-DKOS-16/08-OMD
630	16	10	M 24 x 1,5	31,5	39,0	22,0	30,0	RED-DKOS-16/10-OMD
630	16	12	M 24 x 1,5	31,5	39,0	22,0	30,0	RED-DKOS-16/12-OMD
630	16	14	M 24 x 1,5	33,0	41,0	22,0	30,0	RED-DKOS-16/14-OMD
420	20	6	M 30 x 2	36,0	43,0	27,0	36,0	RED-DKOS-20/06-OMD
420	20	8	M 30 x 2	36,0	43,0	27,0	36,0	RED-DKOS-20/08-OMD
420	20	10	M 30 x 2	35,5	43,0	27,0	36,0	RED-DKOS-20/10-OMD
420	20	12	M 30 x 2	35,5	43,0	27,0	36,0	RED-DKOS-20/12-OMD
420	20	14	M 30 x 2	37,0	45,0	27,0	36,0	RED-DKOS-20/14-OMD
420	20	16	M 30 x 2	36,5	45,0	27,0	36,0	RED-DKOS-20/16-OMD
420	25	6	M 36 x 2	38,5	45,5	32,0	41,0	RED-DKOS-25/06-OMD
420	25	8	M 36 x 2	38,5	45,5	32,0	41,0	RED-DKOS-25/08-OMD
420	25	10	M 36 x 2	38,0	45,5	32,0	41,0	RED-DKOS-25/10-OMD
420	25	12	M 36 x 2	38,0	45,5	32,0	41,0	RED-DKOS-25/12-OMD
420	25	14	M 36 x 2	39,5	47,5	32,0	41,0	RED-DKOS-25/14-OMD
420	25	16	M 36 x 2	39,0	47,5	32,0	41,0	RED-DKOS-25/16-OMD
420	25	20	M 36 x 2	39,0	49,5	32,0	41,0	RED-DKOS-25/20-OMD
420	30	6	M 42 x 2	44,0	51,0	41,0	50,0	RED-DKOS-30/06-OMD
420	30	8	M 42 x 2	44,0	51,0	41,0	50,0	RED-DKOS-30/08-OMD
420	30	10	M 42 x 2	43,5	51,0	41,0	50,0	RED-DKOS-30/10-OMD
420	30	12	M 42 x 2	43,5	51,0	41,0	50,0	RED-DKOS-30/12-OMD
420	30	14	M 42 x 2	45,0	53,0	41,0	50,0	RED-DKOS-30/14-OMD
420	30	16	M 42 x 2	44,5	53,0	41,0	50,0	RED-DKOS-30/16-OMD
420	30	20	M 42 x 2	44,5	55,0	41,0	50,0	RED-DKOS-30/20-OMD
420	30	25	M 42 x 2	45,0	57,0	41,0	50,0	RED-DKOS-30/25-OMD
420	38	6	M 52 x 2	47,5	54,6	50,0	60,0	RED-DKOS-38/06-OMD
420	38	8	M 52 x 2	47,5	54,6	50,0	60,0	RED-DKOS-38/08-OMD
420	38	10	M 52 x 2	47,0	54,6	50,0	60,0	RED-DKOS-38/10-OMD
420	38	12	M 52 x 2	47,0	54,6	50,0	60,0	RED-DKOS-38/12-OMD
420	38	14	M 52 x 2	48,5	56,5	50,0	60,0	RED-DKOS-38/14-OMD
420	38	16	M 52 x 2	48,0	56,5	50,0	60,0	RED-DKOS-38/16-OMD
420	38	20	M 52 x 2	48,0	58,5	50,0	60,0	RED-DKOS-38/20-OMD
420	38	25	M 52 x 2	48,5	60,5	50,0	60,0	RED-DKOS-38/25-OMD
420	38	30	M 52 x 2	49,0	62,5	50,0	60,0	RED-DKOS-38/30-OMD



Mit Dichtkegel und O-Ring - FPM
Passend in Bohrungsform W DIN 3861
Einschraubgewinde:
Metrisches Feingewinde - Zylindrisch
wd = Abdichtung durch Profildichtung - FPM

With Taper and O-ring - FPM
For Type of Port End W DIN 3861
Thread: Metric - Parallel
wd = Sealing by an Elastomer Profiled Ring - FPM



Reihe / Series L

Druck Pressure	Rohr A.D. Tube O.D.	Gewinde Thread		Ca. Maße Approx. Dimensions				Bemerkungen Notes	Bestellzeichen Order-Code
PN	D1	G	G1	L5	i	SW1	SW3		
500	6	M 10 x 1	M 12 x 1,5	24,5	8,0	14	14		EGE-DKOL-06-M 10x1-wd
500	8	M 12 x 1,5	M 14 x 1,5	26,5	12,0	17	17		EGE-DKOL-08-M 12x1,5-wd
500	10	M 14 x 1,5	M 16 x 1,5	27,5	12,0	19	19		EGE-DKOL-10-M 14x1,5-wd
400	12	M 16 x 1,5	M 18 x 1,5	30,5	12,0	22	22		EGE-DKOL-12-M 16x1,5-wd
400	15	M 18 x 1,5	M 22 x 1,5	31,5	12,0	24	27		EGE-DKOL-15-M 18x1,5-wd
400	18	M 22 x 1,5	M 26 x 1,5	31,5	14,0	27	32		EGE-DKOL-18-M 22x1,5-wd
250	22	M 26 x 1,5	M 30 x 2	32,5	16,0	32	36		EGE-DKOL-22-M 26x1,5-wd
250	28	M 33 x 2	M 36 x 2	35,0	18,0	41	41		EGE-DKOL-28-M 33x2-wd
250	35	M 42 x 2	M 45 x 2	42,5	20,0	50	50		EGE-DKOL-35-M 42x2-wd
250	42	M 48 x 2	M 52 x 2	46,5	22,0	55	60		EGE-DKOL-42-M 48x2-wd

Reihe / Series S

Druck Pressure	Rohr A.D. Tube O.D.	Gewinde Thread		Ca. Maße Approx. Dimensions				Bemerkungen Notes	Bestellzeichen Order-Code
PN	D1	G	G1	L5	i	SW1	SW3		
800	6	M 12 x 1,5	M 14 x 1,5	27,0	12,0	17	17		EGE-DKOS-06-M 12x1,5-wd
800	8	M 14 x 1,5	M 16 x 1,5	29,5	12,0	19	19		EGE-DKOS-08-M 14x1,5-wd
800	10	M 16 x 1,5	M 18 x 1,5	32,0	12,0	22	22		EGE-DKOS-10-M 16x1,5-wd
630	12	M 18 x 1,5	M 20 x 1,5	34,0	12,0	24	24		EGE-DKOS-12-M 18x1,5-wd
630	14	M 20 x 1,5	M 22 x 1,5	36,5	14,0	27	27		EGE-DKOS-14-M 20x1,5-wd
630	16	M 22 x 1,5	M 24 x 1,5	37,0	14,0	27	30		EGE-DKOS-16-M 22x1,5-wd
420	20	M 27 x 2	M 30 x 2	43,0	16,0	32	36		EGE-DKOS-20-M 27x2-wd
420	25	M 33 x 2	M 36 x 2	48,0	18,0	41	46		EGE-DKOS-25-M 33x2-wd
420	30	M 42 x 2	M 42 x 2	51,0	20,0	50	50		EGE-DKOS-30-M 42x2-wd
420	38	M 48 x 2	M 52 x 2	60,0	22,0	55	60		EGE-DKOS-38-M 48x2-wd

EGE - GERADE - EINSCHRAUBSTUTZEN

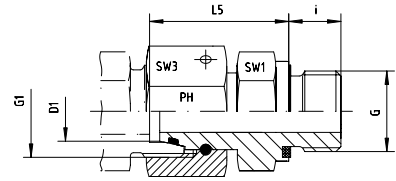
EGE - SWIVEL FEMALE - MALE - CONNECTORS



EDELSTAHL / STAINLESS STEEL
VERBINDUNGSTECHNIK
FLUID CONNECTORS

Mit Dichtkegel und O-Ring - FPM
Passend in Bohrungsform W DIN 3861
Einschraubgewinde:
Whitworth-Rohrgewinde - Zylindrisch
wd = Abdichtung durch Profildichtung - FPM

With Taper and O-ring - FPM
For Type of Port End W DIN 3861
Thread: BSP - Parallel
wd = Sealing by an Elastomer Profiled Ring - FPM



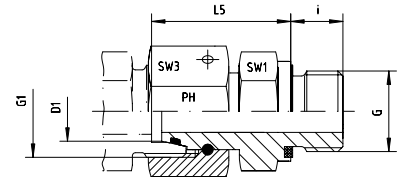
Reihe / Series L

Druck Pressure	Rohr A.D. Tube O.D.	Gewinde Thread	Ca. Maße Approx. Dimensions				Bemerkungen Notes	Bestellzeichen Order-Code
PN	D1	G	G1	L5	i	SW1	SW3	
500	6	G 1/8"	M 12 x 1,5	24,5	8,0	14	14	EGE-DKOL-06-G 1/8"-wd
500	6	G 1/4"	M 12 x 1,5	27,0	12,0	19	14	EGE-DKOL-06-G 1/4"-wd
400	6	G 3/8"	M 12 x 1,5	28,0	12,0	22	14	EGE-DKOL-06-G 3/8"-wd
500	8	G 1/8"	M 14 x 1,5	25,5	8,0	14	17	EGE-DKOL-08-G 1/8"-wd
500	8	G 1/4"	M 14 x 1,5	29,5	12,0	19	17	EGE-DKOL-08-G 1/4"-wd
400	8	G 3/8"	M 14 x 1,5	29,5	12,0	22	17	EGE-DKOL-08-G 3/8"-wd
400	8	G 1/2"	M 14 x 1,5	29,0	14,0	27	17	EGE-DKOL-08-G 1/2"-wd
500	10	G 1/8"	M 16 x 1,5	25,5	8,0	14	19	EGE-DKOL-10-G 1/8"-wd
500	10	G 1/4"	M 16 x 1,5	27,5	12,0	19	19	EGE-DKOL-10-G 1/4"-wd
400	10	G 1/2"	M 16 x 1,5	30,0	14,0	27	19	EGE-DKOL-10-G 1/2"-wd
400	10	G 3/8"	M 16 x 1,5	30,0	12,0	22	19	EGE-DKOL-10-G 3/8"-wd
400	12	G 1/8"	M 18 x 1,5	26,0	8,0	17	22	EGE-DKOL-12-G 1/8"-wd
400	12	G 1/4"	M 18 x 1,5	28,0	12,0	19	22	EGE-DKOL-12-G 1/4"-wd
400	12	G 3/8"	M 18 x 1,5	32,0	12,0	22	22	EGE-DKOL-12-G 3/8"-wd
400	12	G 1/2"	M 18 x 1,5	34,5	14,0	27	22	EGE-DKOL-12-G 1/2"-wd
400	15	G 3/8"	M 22 x 1,5	35,0	12,0	24	27	EGE-DKOL-15-G 3/8"-wd
400	15	G 1/2"	M 22 x 1,5	35,0	14,0	27	27	EGE-DKOL-15-G 1/2"-wd
250	15	G 3/4"	M 22 x 1,5	48,0	16,0	32	27	EGE-DKOL-15-G 3/4"-wd
400	18	G 3/8"	M 26 x 1,5	34,0	12,0	24	32	EGE-DKOL-18-G 3/8"-wd
400	18	G 1/2"	M 26 x 1,5	31,5	14,0	27	32	EGE-DKOL-18-G 1/2"-wd
315	18	G 3/4"	M 26 x 1,5	33,0	16,0	32	32	EGE-DKOL-18-G 3/4"-wd
250	22	G 1/2"	M 30 x 2	32,0	14,0	27	36	EGE-DKOL-22-G 1/2"-wd
250	22	G 3/4"	M 30 x 2	32,5	16,0	32	36	EGE-DKOL-22-G 3/4"-wd
250	22	G 1"	M 30 x 2	33,0	18,0	41	36	EGE-DKOL-22-G 1"-wd
250	28	G 3/4"	M 36 x 2	35,0	16,0	32	41	EGE-DKOL-28-G 3/4"-wd
250	28	G 1"	M 36 x 2	35,0	18,0	41	41	EGE-DKOL-28-G 1"-wd
250	35	G 1 1/4"	M 45 x 2	42,5	20,0	50	50	EGE-DKOL-35-G 1 1/4"-wd
250	42	G 1 1/4"	M 52 x 2	40,5	20,0	50	60	EGE-DKOL-42-G 1 1/4"-wd
250	42	G 1 1/2"	M 52 x 2	46,5	22,0	55	60	EGE-DKOL-42-G 1 1/2"-wd



Mit Dichtkegel und O-Ring - FPM
 Passend in Bohrungsform W DIN 3861
 Einschraubgewinde:
 Whitworth-Rohrgewinde - Zylindrisch
 wd = Abdichtung durch Profildichtung - FPM

With Taper and O-ring - FPM
 For Type of Port End W DIN 3861
 Thread: BSP - Parallel
 wd = Sealing by an Elastomer Profiled Ring - FPM



Reihe / Series S

Druck Pressure	Rohr A.D. Tube O.D.	Gewinde Thread	Ca. Maße Approx. Dimensions				Bemerkungen Notes	Bestellzeichen Order-Code
PN	D1	G	G1	L5	i	SW1	SW3	
800	6	G 1/4"	M 14 x 1,5	27,0	12,0	19	17	EGE-DKOS-06-G 1/4"-wd
800	8	G 1/4"	M 16 x 1,5	29,5	12,0	19	19	EGE-DKOS-08-G 1/4"-wd
800	8	G 3/8"	M 16 x 1,5	29,5	12,0	22	19	EGE-DKOS-08-G 3/8"-wd
800	10	G 3/8"	M 18 x 1,5	32,0	12,0	22	22	EGE-DKOS-10-G 3/8"-wd
800	10	G 1/4"	M 18 x 1,5	27,5	12,0	19	22	EGE-DKOS-10-G 1/4"-wd
630	10	G 1/2"	M 18 x 1,5	32,0	14,0	27	22	EGE-DKOS-10-G 1/2"-wd
630	12	G 1/4"	M 20 x 1,5	42,0	12,0	19	24	EGE-DKOS-12-G 1/4"-wd
630	12	G 3/8"	M 20 x 1,5	34,0	12,0	22	24	EGE-DKOS-12-G 3/8"-wd
630	12	G 1/2"	M 20 x 1,5	34,5	14,0	27	24	EGE-DKOS-12-G 1/2"-wd
630	14	G 1/2"	M 22 x 1,5	36,5	14,0	27	27	EGE-DKOS-14-G 1/2"-wd
630	16	G 3/8"	M 24 x 1,5	37,0	12,0	24	30	EGE-DKOS-16-G 3/8"-wd
630	16	G 1/2"	M 24 x 1,5	37,0	14,0	27	30	EGE-DKOS-16-G 1/2"-wd
420	16	G 3/4"	M 24 x 1,5	39,0	16,0	32	30	EGE-DKOS-16-G 3/4"-wd
420	20	G 1/2"	M 30 x 2	38,0	14,0	27	36	EGE-DKOS-20-G 1/2"-wd
420	20	G 3/4"	M 30 x 2	43,0	16,0	32	36	EGE-DKOS-20-G 3/4"-wd
420	20	G 1"	M 30 x 2	55,0	18,0	41	36	EGE-DKOS-20-G 1"-wd
420	25	G 3/4"	M 36 x 2	58,0	16,0	32	46	EGE-DKOS-25-G 3/4"-wd
420	25	G 1"	M 36 x 2	48,0	18,0	41	46	EGE-DKOS-25-G 1"-wd
420	30	G 1"	M 42 x 2	46,0	18,0	41	50	EGE-DKOS-30-G 1"-wd
420	30	G 1 1/4"	M 42 x 2	51,0	20,0	50	50	EGE-DKOS-30-G 1 1/4"-wd
420	38	G 1 1/2"	M 52 x 2	60,0	22,0	55	60	EGE-DKOS-38-G 1 1/2"-wd

EGE - GERADE - EINSCHRAUBSTUTZEN

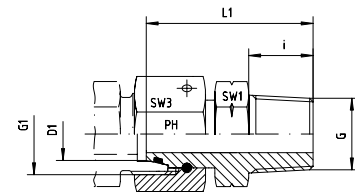
EGE - SWIVEL FEMALE - MALE - CONNECTORS



EDELSTAHL / STAINLESS STEEL
VERBINDUNGSTECHNIK
FLUID CONNECTORS

Mit Dichtkegel und O-Ring - FPM
Passend in Bohrungsform W DIN 3861
Einschraubgewinde: NPT

With Taper and O-ring - FPM
For Type of Port End W DIN 3861
Thread: NPT



Reihe / Series L

Druck Pressure	Rohr A.D. Tube O.D.	Gewinde Thread	Ca. Maße Approx. Dimensions				Bemerkungen Notes	Bestellzeichen Order-Code
PN	D1	G	G1	L1	i	SW1	SW3	
500	6	1/8" NPT	M 12 x 1,5	32,0	10,0	12	14	EGE-DKOL-06-NPT-1/8"
500	6	1/4" NPT	M 12 x 1,5	38,0	15,0	14	14	EGE-DKOL-06-NPT-1/4"
500	8	1/4" NPT	M 14 x 1,5	42,5	15,0	14	17	EGE-DKOL-08-NPT-1/4"
500	10	1/4" NPT	M 16 x 1,5	42,5	15,0	14	19	EGE-DKOL-10-NPT-1/4"
400	10	3/8" NPT	M 16 x 1,5	43,0	15,3	19	19	EGE-DKOL-10-NPT-3/8"
400	12	1/4" NPT	M 18 x 1,5	40,0	15,0	17	22	EGE-DKOL-12-NPT-1/4"
400	12	3/8" NPT	M 18 x 1,5	40,0	15,3	19	22	EGE-DKOL-12-NPT-3/8"
400	12	1/2" NPT	M 18 x 1,5	47,0	20,0	22	22	EGE-DKOL-12-NPT-1/2"
400	15	1/2" NPT	M 22 x 1,5	49,0	20,0	22	27	EGE-DKOL-15-NPT-1/2"
400	18	1/2" NPT	M 26 x 1,5	49,0	20,0	24	32	EGE-DKOL-18-NPT-1/2"
250	22	1/2" NPT	M 30 x 2	49,0	20,0	27	36	EGE-DKOL-22-NPT-1/2"
250	22	3/4" NPT	M 30 x 2	50,0	20,0	27	36	EGE-DKOL-22-NPT-3/4"
250	28	1" NPT	M 36 x 2	61,0	25,0	36	41	EGE-DKOL-28-NPT-1"
250	35	1 1/4" NPT	M 45 x 2	60,5	25,5	46	50	EGE-DKOL-35-NPT-1 1/4"
250	42	1 1/2" NPT	M 52 x 2	63,0	26,0	50	60	EGE-DKOL-42-NPT-1 1/2"

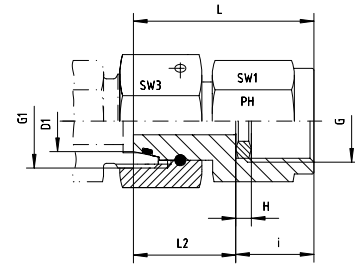
Reihe / Series S

Druck Pressure	Rohr A.D. Tube O.D.	Gewinde Thread	Ca. Maße Approx. Dimensions				Bemerkungen Notes	Bestellzeichen Order-Code
PN	D1	G	G1	L1	i	SW1	SW3	
800	6	1/4" NPT	M 14 x 1,5	38,0	15,0	14	17	EGE-DKOS-06-NPT-1/4"
800	8	1/4" NPT	M 16 x 1,5	39,0	15,0	14	19	EGE-DKOS-08-NPT-1/4"
800	10	3/8" NPT	M 18 x 1,5	40,0	15,3	19	22	EGE-DKOS-10-NPT-3/8"
630	12	1/4" NPT	M 20 x 1,5	41,5	15,0	17	24	EGE-DKOS-12-NPT-1/4"
630	12	3/8" NPT	M 20 x 1,5	41,5	15,3	19	24	EGE-DKOS-12-NPT-3/8"
630	12	1/2" NPT	M 20 x 1,5	48,0	20,0	22	24	EGE-DKOS-12-NPT-1/2"
630	14	1/2" NPT	M 22 x 1,5	48,0	20,0	22	27	EGE-DKOS-14-NPT-1/2"
630	16	3/8" NPT	M 24 x 1,5	45,0	15,3	22	30	EGE-DKOS-16-NPT-3/8"
630	16	1/2" NPT	M 24 x 1,5	49,0	20,0	22	30	EGE-DKOS-16-NPT-1/2"
420	16	3/4" NPT	M 24 x 1,5	49,0	20,0	27	30	EGE-DKOS-16-NPT-3/4"
420	20	3/4" NPT	M 30 x 2	52,0	20,0	27	36	EGE-DKOS-20-NPT-3/4"
420	25	1" NPT	M 36 x 2	66,0	25,0	36	46	EGE-DKOS-25-NPT-1"
420	30	1 1/4" NPT	M 42 x 2	65,5	25,5	46	50	EGE-DKOS-30-NPT-1 1/4"
420	38	1 1/2" NPT	M 52 x 2	66,0	26,0	50	60	EGE-DKOS-38-NPT-1 1/2"



Einstellbare Manometer-Verschraubung
mit Dichtkegel und O-Ring - FPM
Passend in Bohrungsform W DIN 3861

For Pressure Gauge Connection
with Taper and O-ring - FPM
For Type of Port End W DIN 3861



Reihe / Series L

Druck Pressure	Rohr A.D. Tube O.D.	Gewinde Thread	Ca. Maße Approx. Dimensions						Bemerkungen Notes	Bestellzeichen Order-Code
PN	D1	G	G1	L	i	H	SW1	SW3		
315	6	1/4"	M 12 x 1,5	35,5	14,5	4,5	19	14	MVE-DKOL-06-G 1/4"	
315	6	1/2"	M 12 x 1,5	43,0	20,0	5,0	27	14	MVE-DKOL-06-G 1/2"	
315	8	1/4"	M 14 x 1,5	35,5	14,5	4,5	19	17	MVE-DKOL-08-G 1/4"	
315	8	1/2"	M 14 x 1,5	43,7	20,0	5,0	27	17	MVE-DKOL-08-G 1/2"	
315	10	1/4"	M 16 x 1,5	36,0	14,5	4,5	19	19	MVE-DKOL-10-G 1/4"	
315	10	1/2"	M 16 x 1,5	43,7	20,0	5,0	27	19	MVE-DKOL-10-G 1/2"	
315	12	1/4"	M 18 x 1,5	36,0	14,5	4,5	19	22	MVE-DKOL-12-G 1/4"	
315	12	1/2"	M 18 x 1,5	44,0	20,0	5,0	27	22	MVE-DKOL-12-G 1/2"	

Reihe / Series S

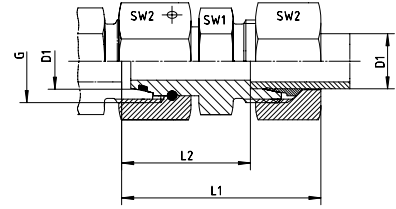
Druck Pressure	Rohr A.D. Tube O.D.	Gewinde Thread	Ca. Maße Approx. Dimensions						Bemerkungen Notes	Bestellzeichen Order-Code
PN	D1	G	G1	L	i	H	SW1	SW3		
630	6	1/4"	M 14 x 1,5	36,0	14,5	4,5	19	17	MVE-DKOS-06-G 1/4"	
630	6	1/2"	M 14 x 1,5	43,0	20,0	5,0	27	17	MVE-DKOS-06-G 1/2"	
630	8	1/4"	M 16 x 1,5	37,5	14,5	4,5	19	19	MVE-DKOS-08-G 1/4"	
630	8	1/2"	M 16 x 1,5	43,0	20,0	5,0	27	19	MVE-DKOS-08-G 1/2"	
630	10	1/4"	M 18 x 1,5	37,5	14,5	4,5	19	22	MVE-DKOS-10-G 1/4"	
630	10	1/2"	M 18 x 1,5	43,5	20,0	5,0	27	22	MVE-DKOS-10-G 1/2"	
630	12	1/4"	M 20 x 1,5	39,0	14,5	4,5	19	24	MVE-DKOS-12-G 1/4"	
630	12	1/2"	M 20 x 1,5	45,0	20,0	5,0	27	24	MVE-DKOS-12-G 1/2"	

DA - DISTANZADAPTER

DA - DISTANCE - ADAPTORS

Mit Dichtkegel und O-Ring (DKO) - FPM
Passend in Bohrungsform W DIN 3861

With Taper and O-ring - FPM
For Type of Port End W DIN 3861



Reihe / Series L

Druck Pressure	Rohr A.D. Tube O.D.	Gewinde Thread	Ca. Maße Approx. Dimensions				Bemerkungen Notes	Bestellzeichen Order-Code
PN	D1	G	L1	L2	SW1	SW2		
500	6	M 12 x 1,5	51,0	36,0	12	14	DA-DKOL-06	
500	8	M 14 x 1,5	51,0	36,0	14	17	DA-DKOL-08	
500	10	M 16 x 1,5	51,0	36,0	17	19	DA-DKOL-10	
400	12	M 18 x 1,5	51,0	36,0	19	22	DA-DKOL-12	
400	15	M 22 x 1,5	51,0	36,0	24	27	DA-DKOL-15	
400	18	M 26 x 1,5	52,0	36,0	27	32	DA-DKOL-18	
250	22	M 30 x 2	56,0	40,0	32	36	DA-DKOL-22	
250	28	M 36 x 2	57,0	40,0	41	41	DA-DKOL-28	
250	35	M 45 x 2	72,0	50,0	46	50	DA-DKOL-35	
250	42	M 52 x 2	83,0	60,0	55	60	DA-DKOL-42	

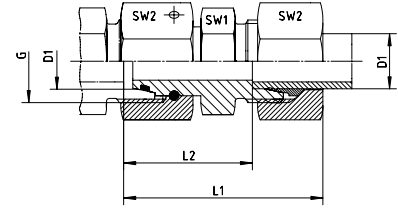
Reihe / Series S

Druck Pressure	Rohr A.D. Tube O.D.	Gewinde Thread	Ca. Maße Approx. Dimensions				Bemerkungen Notes	Bestellzeichen Order-Code
PN	D1	G	L1	L2	SW1	SW2		
800	6	M 14 x 1,5	51,0	36,0	14	17	DA-DKOS-06	
800	8	M 16 x 1,5	51,0	36,0	17	19	DA-DKOS-08	
800	10	M 18 x 1,5	52,0	36,0	19	22	DA-DKOS-10	
630	12	M 20 x 1,5	52,0	36,0	22	24	DA-DKOS-12	
630	14	M 22 x 1,5	58,0	40,0	24	27	DA-DKOS-14	
630	16	M 24 x 1,5	58,0	40,0	27	30	DA-DKOS-16	
420	20	M 30 x 2	68,0	46,0	32	36	DA-DKOS-20	
420	25	M 36 x 2	74,0	50,0	41	46	DA-DKOS-25	
420	30	M 42 x 2	83,0	56,0	46	50	DA-DKOS-30	
420	38	M 52 x 2	91,0	60,0	55	60	DA-DKOS-38	



Mit Dichtkegel und O-Ring (DKO) - FPM
Passend in Bohrungsform W DIN 3861

With Taper and O-ring - FPM
For Type of Port End W DIN 3861



Reihe / Series L

Druck Pressure	Rohr A.D. Tube O.D.	Gewinde Thread	Ca. Maße Approx. Dimensions				Bemerkungen Notes	Bestellzeichen Order-Code
PN	D1	G	L1	L2	SW1	SW2		
500	6	M 12 x 1,5	51,0	36,0	12	14		DA-DKOL-06-SC
500	8	M 14 x 1,5	51,0	36,0	14	17		DA-DKOL-08-SC
500	10	M 16 x 1,5	51,0	36,0	17	19		DA-DKOL-10-SC
400	12	M 18 x 1,5	51,0	36,0	19	22		DA-DKOL-12-SC
400	15	M 22 x 1,5	51,0	36,0	24	27		DA-DKOL-15-SC
400	18	M 26 x 1,5	52,0	36,0	27	32		DA-DKOL-18-SC
250	22	M 30 x 2	56,0	40,0	32	36		DA-DKOL-22-SC
250	28	M 36 x 2	57,0	40,0	41	41		DA-DKOL-28-SC
250	35	M 45 x 2	72,0	50,0	46	50		DA-DKOL-35-SC
250	42	M 52 x 2	83,0	60,0	55	60		DA-DKOL-42-SC

Reihe / Series S

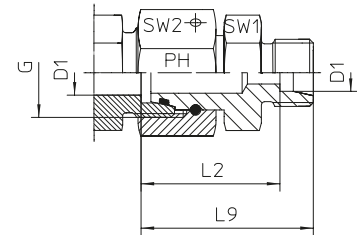
Druck Pressure	Rohr A.D. Tube O.D.	Gewinde Thread	Ca. Maße Approx. Dimensions				Bemerkungen Notes	Bestellzeichen Order-Code
PN	D1	G	L1	L2	SW1	SW2		
800	6	M 14 x 1,5	51,0	36,0	14	17		DA-DKOS-06-SC
800	8	M 16 x 1,5	51,0	36,0	17	19		DA-DKOS-08-SC
800	10	M 18 x 1,5	52,0	36,0	19	22		DA-DKOS-10-SC
630	12	M 20 x 1,5	52,0	36,0	22	24		DA-DKOS-12-SC
630	14	M 22 x 1,5	58,0	40,0	24	27		DA-DKOS-14-SC
630	16	M 24 x 1,5	58,0	40,0	27	30		DA-DKOS-16-SC
420	20	M 30 x 2	68,0	46,0	32	36		DA-DKOS-20-SC
420	25	M 36 x 2	74,0	50,0	41	46		DA-DKOS-25-SC
420	30	M 42 x 2	83,0	56,0	46	50		DA-DKOS-30-SC
420	38	M 52 x 2	91,0	60,0	55	60		DA-DKOS-38-SC

DA - DISTANZADAPTER

DA - DISTANCE - ADAPTORS

Mit Dichtkegel und O-Ring (DKO) - FPM
Passend in Bohrungsform W DIN 3861

With Taper and O-ring - FPM
For Type of Port End W DIN 3861



Reihe / Series L

Druck Pressure	Rohr A.D. Tube O.D.	Gewinde Thread	Ca. Maße Approx. Dimensions				Bemerkungen Notes	Bestellzeichen Order-Code
PN	D1	G	L2	L9	SW1	SW2		
500	6	M 12 x 1,5	36,0	43,0	12,0	14,0	DA-DKOL-06-OMD	
500	8	M 14 x 1,5	36,0	43,0	14,0	17,0	DA-DKOL-08-OMD	
500	10	M 16 x 1,5	36,0	43,0	17,0	19,0	DA-DKOL-10-OMD	
400	12	M 18 x 1,5	36,0	43,0	19,0	22,0	DA-DKOL-12-OMD	
400	15	M 22 x 1,5	36,0	43,0	24,0	27,0	DA-DKOL-15-OMD	
400	18	M 26 x 1,5	36,0	43,5	27,0	32,0	DA-DKOL-18-OMD	
250	22	M 30 x 2	40,0	47,5	32,0	36,0	DA-DKOL-22-OMD	
250	28	M 36 x 2	40,0	47,5	41,0	41,0	DA-DKOL-28-OMD	
250	35	M 45 x 2	50,0	60,5	46,0	50,0	DA-DKOL-35-OMD	
250	42	M 52 x 2	60,0	71,0	55,0	60,0	DA-DKOL-42-OMD	

Reihe / Series S

Druck Pressure	Rohr A.D. Tube O.D.	Gewinde Thread	Ca. Maße Approx. Dimensions				Bemerkungen Notes	Bestellzeichen Order-Code
PN	D1	G	L2	L9	SW1	SW2		
800	6	M 14 x 1,5	36,0	43,0	14,0	17,0	DA-DKOS-06-OMD	
800	8	M 16 x 1,5	36,0	43,0	17,0	19,0	DA-DKOS-08-OMD	
800	10	M 18 x 1,5	36,0	43,5	19,0	22,0	DA-DKOS-10-OMD	
630	12	M 20 x 1,5	36,0	43,5	22,0	24,0	DA-DKOS-12-OMD	
630	14	M 22 x 1,5	40,0	48,0	24,0	27,0	DA-DKOS-14-OMD	
630	16	M 24 x 1,5	40,0	48,5	27,0	30,0	DA-DKOS-16-OMD	
420	20	M 30 x 2	46,0	56,5	32,0	36,0	DA-DKOS-20-OMD	
420	25	M 36 x 2	50,0	62,0	41,0	46,0	DA-DKOS-25-OMD	
420	30	M 42 x 2	56,0	69,5	46,0	50,0	DA-DKOS-30-OMD	
420	38	M 52 x 2	60,0	76,0	55,0	60,0	DA-DKOS-38-OMD	