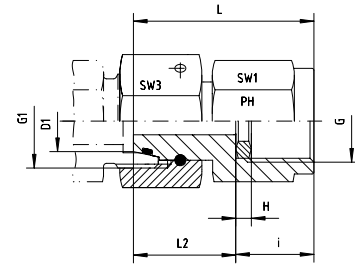




Einstellbare Manometer-Verschraubung  
mit Dichtkegel und O-Ring - FPM  
Passend in Bohrungsform W DIN 3861

For Pressure Gauge Connection  
with Taper and O-ring - FPM  
For Type of Port End W DIN 3861



Reihe / Series L

Druck Pressure	Rohr A.D. Tube O.D.	Gewinde Thread	Ca. Maße Approx. Dimensions						Bemerkungen Notes	Bestellzeichen Order-Code
PN	D1	G	G1	L	i	H	SW1	SW3		
315	6	1/4"	M 12 x 1,5	35,5	14,5	4,5	19	14	MVE-DKOL-06-G 1/4"	
315	6	1/2"	M 12 x 1,5	43,0	20,0	5,0	27	14	MVE-DKOL-06-G 1/2"	
315	8	1/4"	M 14 x 1,5	35,5	14,5	4,5	19	17	MVE-DKOL-08-G 1/4"	
315	8	1/2"	M 14 x 1,5	43,7	20,0	5,0	27	17	MVE-DKOL-08-G 1/2"	
315	10	1/4"	M 16 x 1,5	36,0	14,5	4,5	19	19	MVE-DKOL-10-G 1/4"	
315	10	1/2"	M 16 x 1,5	43,7	20,0	5,0	27	19	MVE-DKOL-10-G 1/2"	
315	12	1/4"	M 18 x 1,5	36,0	14,5	4,5	19	22	MVE-DKOL-12-G 1/4"	
315	12	1/2"	M 18 x 1,5	44,0	20,0	5,0	27	22	MVE-DKOL-12-G 1/2"	

Reihe / Series S

Druck Pressure	Rohr A.D. Tube O.D.	Gewinde Thread	Ca. Maße Approx. Dimensions						Bemerkungen Notes	Bestellzeichen Order-Code
PN	D1	G	G1	L	i	H	SW1	SW3		
630	6	1/4"	M 14 x 1,5	36,0	14,5	4,5	19	17	MVE-DKOS-06-G 1/4"	
630	6	1/2"	M 14 x 1,5	43,0	20,0	5,0	27	17	MVE-DKOS-06-G 1/2"	
630	8	1/4"	M 16 x 1,5	37,5	14,5	4,5	19	19	MVE-DKOS-08-G 1/4"	
630	8	1/2"	M 16 x 1,5	43,0	20,0	5,0	27	19	MVE-DKOS-08-G 1/2"	
630	10	1/4"	M 18 x 1,5	37,5	14,5	4,5	19	22	MVE-DKOS-10-G 1/4"	
630	10	1/2"	M 18 x 1,5	43,5	20,0	5,0	27	22	MVE-DKOS-10-G 1/2"	
630	12	1/4"	M 20 x 1,5	39,0	14,5	4,5	19	24	MVE-DKOS-12-G 1/4"	
630	12	1/2"	M 20 x 1,5	45,0	20,0	5,0	27	24	MVE-DKOS-12-G 1/2"	